

Converting Colors

YUV(141.8210, -15.1948,
20.3280)

Have a look what the booklet for
YUV(141.8210, -15.1948, 20.3280)
contains.

YUV(141.8210, -15.1948, 20.3280)	3
<i>Conversions</i>	4
<i>Details</i>	6
<i>Harmonies</i>	12
<i>Previews</i>	24
<i>Color Blindness Simulation</i>	28
<i>CSS Examples</i>	31

Color

**YUV(141.8210, -15.1948,
20.3280)**

Conversions

Conversions Part 1

Format	Color
Hex	A5886F
RGB	165, 136, 111
RGB Percent	65%, 53%, 44%
CMY	0.3529, 0.4667, 0.5647
CMYK	0.00, 0.18, 0.33, 0.35
HSL	28°, 23%, 54%
HSV	28°, 33%, 65%
XYZ	27.1905, 26.7553, 18.7701
YIQ	141.8210, 25.3090, -1.6270

Conversions

Conversions Part 2

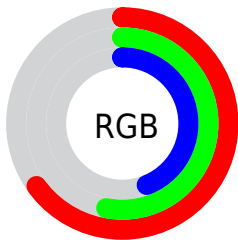
Format	Color
R_{YB}	165, 158, 111
Decimal	10848367
CIE _{Lab}	58.75, 7.27, 17.56
CIE _{LCh}	59, 19.010, 67.519
Yxy	26.7553, 0.3739, 0.3679
Android (android.graphics.Color)	4289038447 (0xFFA5886F)
YUV	141.8210, -15.1948, 20.3280
Hunter-Lab	51.7256, 3.3119, 14.6928

Details

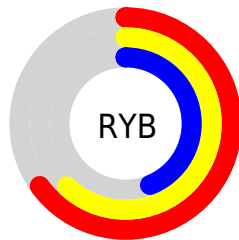
The YUV color **141.8210, -15.1948, 20.3280** is a dark color, and the websafe version is hex **CC9999**. A complement of this color would be **134.1790, 15.1948, -20.3280**, and the grayscale version is **142.0000, 0.0000, 0.0000**.

A 20% lighter version of the original color is **195.6040, -16.0738, 22.2723**, and **91.1520, -13.8789, 18.2837** is the 20% darker color. If you saturate the color by 10%, you get **134.6000, -20.0158, 26.6608**, and if you desaturate by 10%, it is **148.9280, -10.8105, 14.0951**.

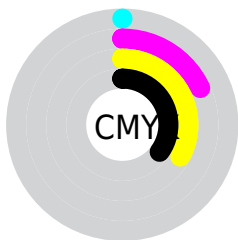
Distribution



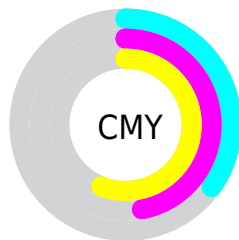
- Red (65%)
- Green (53%)
- Blue (44%)



- Red (65%)
- Yellow (62%)
- Blue (44%)



- Cyan (0%)
- Magenta (18%)
- Yellow (33%)
- Black (35%)



- Cyan (35%)
- Magenta (47%)
- Yellow (56%)

Brightness & Saturation Gradients

These gradients show how the YUV color 141.8210, -15.1948, 20.3280 changes by changing the brightness by 10 percent. The first figure shows a shift by +10% for each color and the second figure -10%.

Similar to the brightness gradients but the following saturation gradients show a change of the YUV color 141.8210, -15.1948, 20.3280 by changing the saturation by 10% instead.

■ 141.8210,
-15.1948, 20.3280

■ 141.8210,
-15.1948, 20.3280

■ 255.0000, 0.0000,
0.0000

■ 116.3370,
-14.4631, 18.9985

■ 195.6040,
-16.0738, 22.2723

■ 91.1520, -13.8789,
18.2837

■ 223.7890,
-16.6580, 22.9870

■ 67.6680, -13.1473,
16.9542

■ 245.4990,
-13.5570, 8.3324

■ 45.1840, -12.4157,
15.6246

■ 253.9740, -3.9312,
0.8998

■ 24.2870, -11.9735,
13.7803

■ 1.4950, -0.7370,
3.0739

■ 0.0000, 0.0000,

0.0000

■ 141.8210,
-15.1948, 20.3280

■ 141.8210,
-15.1948, 20.3280

■ 134.6000,
-20.0158, 26.6608

■ 148.9280,
-10.8105, 14.0951

■ 127.4930,
-24.4000, 32.8936

■ 156.1490, -5.9895,
7.7623

■ 120.2720,
-29.2211, 39.2265

■ 163.3700, -1.1684,
1.4295

■ 113.7520,
-33.8947, 44.9445

■ 169.8900, 3.5052,
-4.2885

■ 106.6450,
-38.2790, 51.1773

■ 177.1110, 8.3263,
-10.6213

■ 99.4240, -43.1000,
57.5102

■ 184.2180, 12.7105,
-16.8542

■ 93.9470, -46.3159,
62.3135

■ 191.4390, 17.5316,
-23.1870

■ 198.5460, 21.9158,
-29.4198

■ 205.1970, 24.5529,
-35.2528

Harmonies

Analogous

The Analogous color harmony consists of three colors that are next to each other on the color wheel.



142.8310, -10.2697, 27.3352



141.8210, -15.1948, 20.3280



140.5160, -16.0304, 8.3175

Triad

The Triadic color harmony groups three colors that are evenly spaced from another and form a triangle on the color wheel.



141.8210, -15.1948, 20.3280



134.4690, 5.1918, -31.9833



143.5350, 12.0612, 4.7928

Complementary

The Complementary color scheme is a pair of colors which are on the opposite of each other on the color wheel.



141.8210, -15.1948, 20.3280



134.1790, 15.1948, -20.3280

Split Complementary

Split-complementary colors differ from the complementary color scheme. The scheme consists of three colors, the original color and two neighbors of the complement color.



140.5760, 16.4780, -11.9062



141.8210, -15.1948, 20.3280



134.8090, 12.9122, -34.9125

Square

The Square scheme is like the rectangle color scheme, but the four colors are evenly spaced on the color wheel.



141.8210, -15.1948, 20.3280



136.1300, -4.0081, -21.1620



137.0040, 17.2530, -27.1905



144.0870, 4.8871, 19.2177

Rectangle

The Rectangle color scheme consists of four colors that form a rectangle on the color wheel.



141.8210, -15.1948, 20.3280



138.8460, -13.2351, -1.6189



137.0040, 17.2530, -27.1905



142.9580, 13.8247, -0.8402

Sweetspot

The Sweet Spot groups the original color and five complimentary colors.



141.8210, -15.1948, 20.3280



205.1490, -5.9895, 7.7623



130.5660, 5.1440, 30.1986



101.4090, -3.6526, 4.9033



235.0000, 0.0000, 0.0000



107.0000, 0.0000, 0.0000

Same Dimension

The Same Dimension uses a secret algorithm to generate beautiful new colors.



141.8210, -15.1948, 20.3280



178.1230, -23.2316, 31.4641



157.0830, -22.7189, 6.9432



78.0390, -2.4842, 3.4738



82.6840, -40.7632, 54.6511



10.0780, -4.9685, 6.9476

Inverse Universe

The Inverse Universe completely reimagines the original color for something new.



134.1790, 15.1948, -20.3280



166.8770, 23.2316, -31.4641



118.9170, 22.7189, -6.9432



76.9610, 2.4842, -3.4738



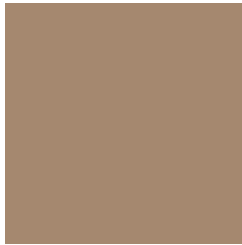
62.3160, 40.7632, -54.6511



7.9220, 4.9685, -6.9476

Previews

White Background



This preview shows how the YUV color 141.8210, -15.1948, 20.3280 looks on a white background.

Color Contrast Check

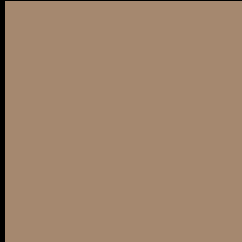
Large Text (above 18pt) WCAG AA ✓ Pass

Any Text WCAG AA × Fail

Large Text (above 18pt) WCAG AAA × Fail

Any Text WCAG AAA × Fail

Black Background



This preview shows how the YUV color 141.8210, -15.1948, 20.3280 looks on a black background.

Color Contrast Check

Large Text (above 18pt) WCAG AA ✓ Pass

Any Text WCAG AA ✓ Pass

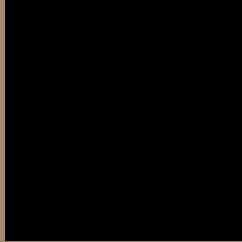
Large Text (above 18pt) WCAG AAA ✓ Pass

Any Text WCAG AAA × Fail

If you want to check with other color combinations, try the [Color Contrast Checker](#).

YUV 141.8210, -15.1948, 20.3280

Background



This preview shows how black text looks on a background with the YUV color 141.8210, -15.1948, 20.3280.



This preview shows how white text looks on a background with the YUV color 141.8210, -15.1948,

Color Blindness Simulation

Color vision deficiency is a very complex topic, and I could not describe the different causes any better than Wikipedia does, so if you want to learn more, you should check out their [article about color blindness](#).

Dichromacy



Original Color

141.8210, -15.1948, 20.3280

Protanopia

140.4990, -13.5570, 8.3324

Deuteranopia

141.8210, -15.1948, 20.3280



Tritanopia

143.9040, -0.9387, 21.1322

Trichromacy



Original Color

141.8210, -15.1948, 20.3280

Protanomaly

140.7060, -14.1521, 12.5358

Deuteranomaly

141.8210, -15.1948, 20.3280

Tritanomaly

142.9380, -5.8854, 21.1024

Monochromacy



Original Color

141.8210, -15.1948, 20.3280

Achromatopsia

142.0000, 0.0000, 0.0000

Achromatomaly

141.9640, -5.4053, 7.0476

CSS Examples

Text

The CSS property to change the color of the text to YUV 141.8210, -15.1948, 20.3280 is called "color". The color property can be set on classes, ids or directly on the HTML element.

This example shows how text in the color `rgb(165, 136, 111)` looks like.

```
.text, #text, p{  
    color:rgb(165, 136, 111)  
}
```

If you want to add a text shadow in that color use the text-shadow property, you can generate a text shadow directly with our [CSS Text Shadow Generator](#).

Here you see how black text with a 4 pixel rgb(165, 136, 111) colored shadow looks like.

```
.shadow{ text-shadow: 4px 4px 2px rgb(165, 136, 111) }
```

Border

The CSS property to change the border of an element to YUV 141.8210, -15.1948, 20.3280 is called "border".

The border property can be set on classes, ids or directly on the HTML element.

This example shows the color as border, it can be applied via the CSS property "border" or "border-color".

```
.border, #border, table{ border:4px solid rgb(165, 136, 111) }
```


If only the border color should be changed use the property `border-color`.

```
.border{ border-color:rgb(165, 136, 111) }
```

If you want to add a box shadow in that color use:

Here you see how a box with a 4 pixel `rgb(165, 136, 111)` colored shadow looks like.

```
.boxshadow{ -moz-box-shadow:4px 4px 4px  
4px rgb(165, 136, 111); -webkit-box-  
shadow:4px 4px 4px 4px rgb(165, 136, 111);  
box-shadow:4px 4px 4px 4px rgb(165, 136,  
111) }
```

Background

The CSS property to change the background color of an element to YUV 141.8210, -15.1948, 20.3280 is called "background". The background property can be set on classes, ids or directly on the HTML element.

```
.background, #background, body{  
background: rgb(165, 136, 111) }
```

If only the background color should be changed can be used:

```
.background{ background-color: rgb(165,  
136, 111) }
```

This example shows the color as background, it is applied via the CSS property "background".

To optimize and compress your CSS code, you can use our [online CSS compressor and optimizer](#) based on csstidy. If you want to create a linear or radial gradient as background or border, check our [CSS Gradient Generator](#).

Hey! You found this booklet interesting? Support Converting Colors with the new Membership Option!

The pro membership hides all ads, plus gives you double the colors in the color bucket, and more awesome pro features!

[Learn more, Memberships starting at \\$2.50/m!](#)

**Follow me
on Twitter!**

@ConvertingColor