

Converting Colors

YUV(142.2930, -27.7524,
34.8230)

Have a look what the booklet for
YUV(142.2930, -27.7524, 34.8230)
contains.

YUV(142.2930, -27.7524, 34.8230)	3
<i>Conversions</i>	4
<i>Details</i>	6
<i>Harmonies</i>	12
<i>Previews</i>	24
<i>Color Blindness Simulation</i>	28
<i>CSS Examples</i>	31

Color

**YUV(142.2930, -27.7524,
34.8230)**

Conversions

Conversions Part 1

Format	Color
Hex	B68556
RGB	182, 133, 86
RGB Percent	71%, 52%, 34%
CMY	0.2863, 0.4784, 0.6627
CMYK	0.00, 0.27, 0.53, 0.29
HSL	29°, 40%, 53%
HSV	29°, 53%, 71%
XYZ	29.3586, 27.3920, 12.5439
YIQ	142.2930, 44.2910, -4.2290

Conversions

Conversions Part 2

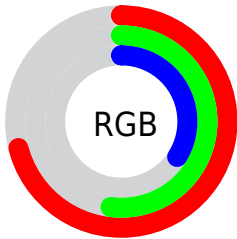
Format	Color
RYB	182, 178, 86
Decimal	11961686
CIELab	59.34, 13.27, 32.57
CIELCh	59, 35.170, 67.838
Yxy	27.3920, 0.4237, 0.3953
Android (android.graphics.Color)	4290151766 (0xFFB68556)
YUV	142.2930, -27.7524, 34.8230
Hunter-Lab	52.3374, 8.5391, 22.4259

Details

The YUV color $142.2930, -27.7524, 34.8230$ is a dark color, and the websafe version is hex $CC9966$. A complement of this color would be $125.7070, 27.7524, -34.8230$, and the grayscale version is $143.0000, 0.0000, 0.0000$.

A 20% lighter version of the original color is $196.5600, -29.3631, 38.0969$, and $90.8410, -25.5576, 30.8344$ is the 20% darker color. If you saturate the color by 10%, you get $134.9580, -33.0103, 41.2558$, and if you desaturate by 10%, it is $149.6280, -22.4946, 28.3902$.

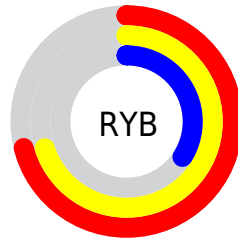
Distribution



Red (71%)

Green (52%)

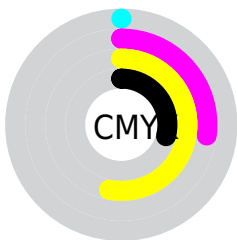
Blue (34%)



Red (71%)

Yellow (70%)

Blue (34%)

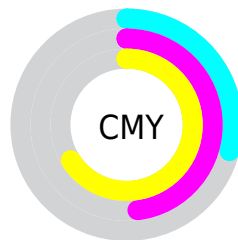


Cyan (0%)

Magenta (27%)

Yellow (53%)

Black (29%)



Cyan (29%)

Magenta (48%)

Yellow (66%)

Brightness & Saturation Gradients

These gradients show how the YUV color 142.2930, -27.7524, 34.8230 changes by changing the brightness by 10 percent. The first figure shows a shift by +10% for each color and the second figure -10%.

Similar to the brightness gradients but the following saturation gradients show a change of the YUV color 142.2930, -27.7524, 34.8230 by changing the saturation by 10% instead.

■ 142.2930,
-27.7524, 34.8230

■ 142.2930,
-27.7524, 34.8230

■ 255.0000, 0.0000,
0.0000

■ 116.5100,
-26.8734, 32.8787

■ 196.5600,
-29.3631, 38.0969

■ 90.8410, -25.5576,
30.8344

■ 220.4450,
-28.3204, 30.3047

■ 66.6450, -24.9680,
28.3753

■ 239.9590,
-24.6298, 13.1910

■ 44.4320, -21.9050,
25.9311

■ 250.7820,
-16.1615, 3.6992

■ 24.9180, -12.2846,
20.2429

■ 254.0880, -3.4944,
0.7998

■ 6.5780, -3.2430,
13.5251

■ 0.0000, 0.0000,

0.0000

■ 142.2930,
-27.7524, 34.8230

■ 142.2930,
-27.7524, 34.8230

■ 134.9580,
-33.0103, 41.2558

■ 149.6280,
-22.4946, 28.3902

■ 127.0360,
-37.9787, 48.2034

■ 157.5500,
-17.5262, 21.4426

■ 119.5870,
-43.6734, 54.7362

■ 164.9990,
-11.8315, 14.9099

■ 112.2520,
-48.9312, 61.1690

■ 172.3340, -6.5737,
8.4771

■ 106.6610,
-52.5839, 66.0723

■ 179.6690, -1.3158,
2.0443

■ 187.5910, 3.6526,
-4.9033

■ 194.9260, 8.9105,
-11.3361

■ 202.3750, 14.6051,
-17.8689

■ 210.2970, 19.5736,
-24.8165

Harmonies

Analogous

The Analogous color harmony consists of three colors that are next to each other on the color wheel.



143.7860, -18.6285, 48.4227



142.2930, -27.7524, 34.8230



140.1070, -29.1398, 13.0612

Triad

The Triadic color harmony groups three colors that are evenly spaced from another and form a triangle on the color wheel.



142.2930, -27.7524, 34.8230



119.7020, 14.9369, -77.7917



146.3150, 22.5227, 9.3707

Complementary

The Complementary color scheme is a pair of colors which are on the opposite of each other on the color wheel.



142.2930, -27.7524, 34.8230



125.7070, 27.7524, -34.8230

Split Complementary

Split-complementary colors differ from the complementary color scheme. The scheme consists of three colors, the original color and two neighbors of the complement color.



140.0870, 31.5091, -26.3863



142.2930, -27.7524, 34.8230



113.2660, 32.8999, -99.3343

Square

The Square scheme is like the rectangle color scheme, but the four colors are evenly spaced on the color wheel.



142.2930, -27.7524, 34.8230



130.5420, -5.6902, -41.6943



126.8600, 35.5650, -67.4062



146.8640, 9.9270, 36.0763

Rectangle

The Rectangle color scheme consists of four colors that form a rectangle on the color wheel.



142.2930, -27.7524, 34.8230



137.7350, -25.0124, -4.1526



126.8600, 35.5650, -67.4062



145.0470, 25.6128, -1.7952

Sweetspot

The Sweet Spot groups the original color and five complimentary colors.



142.2930, -27.7524, 34.8230



221.5150, -11.0999, 13.5803



120.4040, 7.6888, 54.0197



110.3340, -6.5737, 8.4771



247.0000, 0.0000, 0.0000



120.0000, 0.0000, 0.0000

Same Dimension

The Same Dimension uses a secret algorithm to generate beautiful new colors.



142.2930, -27.7524, 34.8230



175.4020, -43.0892, 54.0214



169.8820, -41.3538, 10.6275



88.0390, -2.4842, 3.4738



91.2560, -44.9892, 56.7805



16.5900, -8.1789, 10.0066

Inverse Universe

The Inverse Universe completely reimagines the original color for something new.



125.7070, 27.7524, -34.8230



149.5980, 43.0892, -54.0214



98.1180, 41.3538, -10.6275



86.3740, 2.7736, -2.9590



64.1570, 45.2786, -56.2657



11.4100, 8.1789, -10.0066

Previews

White Background



This preview shows how the YUV color 142.2930, -27.7524, 34.8230 looks on a white background.

Color Contrast Check

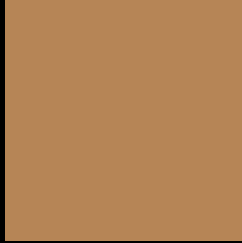
Large Text (above 18pt) WCAG AA ✓ Pass

Any Text WCAG AA × Fail

Large Text (above 18pt) WCAG AAA × Fail

Any Text WCAG AAA × Fail

Black Background



This preview shows how the YUV color 142.2930, -27.7524, 34.8230 looks on a black background.

Color Contrast Check

Large Text (above 18pt) WCAG AA ✓ Pass

Any Text WCAG AA ✓ Pass

Large Text (above 18pt) WCAG AAA ✓ Pass

Any Text WCAG AAA × Fail

If you want to check with other color combinations, try the [Color Contrast Checker](#).

YUV 142.2930, -27.7524, 34.8230

Background



This preview shows how black text looks on a background with the YUV color 142.2930, -27.7524, 34.8230.



This preview shows how white text looks on a background with the YUV color 142.2930, -27.7524,

34.8230.

Color Blindness Simulation

Color vision deficiency is a very complex topic, and I could not describe the different causes any better than Wikipedia does, so if you want to learn more, you should check out their [article about color blindness](#).

Dichromacy



Original Color

142.2930, -27.7524, 34.8230

Protanopia

140.8450, -25.0666, 13.2909

Deuteranopia

142.1350, -28.1676, 27.9456



Tritanopia

145.6670, -4.7658, 35.3720

Trichromacy



Original Color

142.2930, -27.7524, 34.8230

Protanomaly

141.0740, -25.6725, 20.9831

Deuteranomaly

142.4450, -28.3204, 30.3047

Tritanomaly

144.4900, -13.0596, 35.5273

Monochromacy



Original Color

142.2930, -27.7524, 34.8230

Achromatopsia

142.0000, 0.0000, 0.0000

Achromatomaly

142.4440, -10.0789, 12.7656

CSS Examples

Text

The CSS property to change the color of the text to YUV 142.2930, -27.7524, 34.8230 is called "color". The color property can be set on classes, ids or directly on the HTML element.

This example shows how text in the color `rgb(182, 133, 86)` looks like.

```
.text, #text, p{  
    color:rgb(182, 133, 86)  
}
```

If you want to add a text shadow in that color use the text-shadow property, you can generate a text shadow directly with our [CSS Text Shadow Generator](#).

Here you see how black text with a 4 pixel rgb(182, 133, 86) colored shadow looks like.

```
.shadow{ text-shadow: 4px 4px 2px rgb(182, 133, 86) }
```

Border

The CSS property to change the border of an element to YUV 142.2930, -27.7524, 34.8230 is called "border".

The border property can be set on classes, ids or directly on the HTML element.

This example shows the color as border, it can be applied via the CSS property "border" or "border-color".

```
.border, #border, table{ border:4px solid rgb(182, 133, 86) }
```


If only the border color should be changed use the property `border-color`.

```
.border{ border-color:rgb(182, 133, 86) }
```

If you want to add a box shadow in that color use:

Here you see how a box with a 4 pixel `rgb(182, 133, 86)` colored shadow looks like.

```
.boxshadow{ -moz-box-shadow:4px 4px 4px  
4px rgb(182, 133, 86); -webkit-box-  
shadow:4px 4px 4px 4px rgb(182, 133, 86);  
box-shadow:4px 4px 4px 4px rgb(182, 133,  
86) }
```

Background

The CSS property to change the background color of an element to YUV 142.2930, -27.7524, 34.8230 is called "background". The background property can be set on classes, ids or directly on the HTML element.

```
.background, #background, body{  
background: rgb(182, 133, 86) }
```

If only the background color should be changed can be used:

```
.background{ background-color: rgb(182,  
133, 86) }
```

This example shows the color as background, it is applied via the CSS property "background".

To optimize and compress your CSS code, you can use our [online CSS compressor and optimizer](#) based on csstidy. If you want to create a linear or radial gradient as background or border, check our [CSS Gradient Generator](#).

Hey! You found this booklet interesting? Support Converting Colors with the new Membership Option!

The pro membership hides all ads, plus gives you double the colors in the color bucket, and more awesome pro features!

[Learn more, Memberships starting at \\$2.50/m!](#)

**Follow me
on Twitter!**

@ConvertingColor