

Converting Colors

YUV(142.4790, -13.0541,
33.7829)

Have a look what the booklet for
YUV(142.4790, -13.0541, 33.7829)
contains.

YUV(142.4790, -13.0541, 33.7829)	3
<i>Conversions</i>	4
<i>Details</i>	6
<i>Harmonies</i>	12
<i>Previews</i>	24
<i>Color Blindness Simulation</i>	28
<i>CSS Examples</i>	31

Color

**YUV(142.4790, -13.0541,
33.7829)**

Conversions

Conversions Part 1

Format	Color
Hex	B58074
RGB	181, 128, 116
RGB Percent	71%, 50%, 45%
CMY	0.2902, 0.4980, 0.5451
CMYK	0.00, 0.29, 0.36, 0.29
HSL	11°, 31%, 58%
HSV	11°, 36%, 71%
XYZ	29.9276, 26.5231, 20.0651
YIQ	142.4790, 35.4400, 7.5040

Conversions

Conversions Part 2

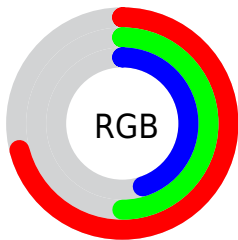
Format	Color
R_{YB}	181, 131, 116
Decimal	11894900
CIE _{Lab}	58.53, 18.91, 14.69
CIE _{LCh}	59, 23.942, 37.841
Yxy	26.5231, 0.3911, 0.3466
Android (android.graphics.Color)	4290084980 (0xFFB58074)
YUV	142.4790, -13.0541, 33.7829
Hunter-Lab	51.5005, 13.6027, 12.9504

Details

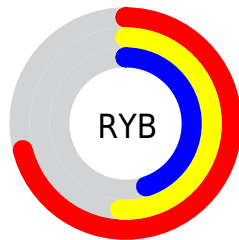
The YUV color $142.4790, -13.0541, 33.7829$ is a dark color, and the websafe version is hex $CC9999$. A complement of this color would be $154.5210, 13.0541, -33.7829$, and the grayscale version is $143.0000, 0.0000, 0.0000$.

A 20% lighter version of the original color is $196.5610, -14.0806, 36.3420$, and $91.2120, -11.4435, 30.5091$ is the 20% darker color. If you saturate the color by 10%, you get $131.6220, -16.5756, 43.3045$, and if you desaturate by 10%, it is $153.3360, -9.5326, 24.2613$.

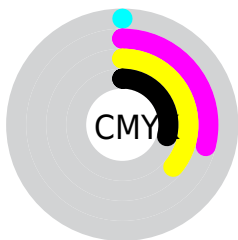
Distribution



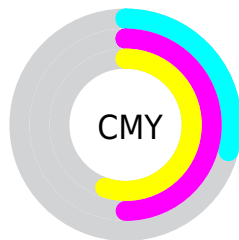
- Red (71%)
- Green (50%)
- Blue (45%)



- Red (71%)
- Yellow (51%)
- Blue (45%)



- Cyan (0%)
- Magenta (29%)
- Yellow (36%)
- Black (29%)



- Cyan (29%)
- Magenta (50%)
- Yellow (55%)

Brightness & Saturation Gradients

These gradients show how the YUV color 142.4790, -13.0541, 33.7829 changes by changing the brightness by 10 percent. The first figure shows a shift by +10% for each color and the second figure -10%.

Similar to the brightness gradients but the following saturation gradients show a change of the YUV color 142.4790, -13.0541, 33.7829 by changing the saturation by 10% instead.

■ 142.4790,
-13.0541, 33.7829

■ 142.4790,
-13.0541, 33.7829

■ 255.0000, 0.0000,
0.0000

■ 116.5820,
-12.6119, 31.9386

■ 196.5610,
-14.0806, 36.3420

■ 91.2120, -11.4435,
30.5091

■ 221.1580,
-12.8959, 29.6794

■ 67.4290, -10.5645,
28.5648

■ 240.7860, -8.7685,
12.4657

■ 44.6460, -9.6855,
26.6205

■ 254.6580, -1.3104,
0.2999

■ 21.7060, -10.7011,
25.6908

■ 7.5890, -3.2484,
15.2694

■ 0.0000, 0.0000,

0.0000

■ 142.4790,
-13.0541, 33.7829

■ 142.4790,
-13.0541, 33.7829

■ 131.6220,
-16.5756, 43.3045

■ 153.3360, -9.5326,
24.2613

■ 120.7650,
-20.0971, 52.8261

■ 164.1930, -6.0111,
14.7397

■ 110.4950,
-23.9080, 61.8329

■ 174.4630, -2.2003,
5.7329

■ 99.6380, -27.4295,
71.3545

■ 185.3200, 1.3212,
-3.7886

■ 88.6670, -31.3878,
80.9760

■ 196.2910, 5.2795,
-13.4102

■ 77.8100, -34.9093,
90.4976

■ 207.1480, 8.8010,
-22.9318

■ 73.4900, -36.2306,
94.2863

■ 217.4180, 12.6119,
-31.9386

■ 227.5910, 13.5126,
-40.8603

■ 232.8740, 10.9081,
-45.4935

Harmonies

Analogous

The Analogous color harmony consists of three colors that are next to each other on the color wheel.



143.2970, -3.5974, 33.9425



142.4790, -13.0541, 33.7829



140.8170, -19.1368, 24.7165

Triad

The Triadic color harmony groups three colors that are evenly spaced from another and form a triangle on the color wheel.



142.4790, -13.0541, 33.7829



133.5700, -4.7180, -26.8099



139.9930, 20.7095, -15.7799

Complementary

The Complementary color scheme is a pair of colors which are on the opposite of each other on the color wheel.



142.4790, -13.0541, 33.7829



154.5210, 13.0541, -33.7829

Split Complementary

Split-complementary colors differ from the complementary color scheme. The scheme consists of three colors, the original color and two neighbors of the complement color.



134.5020, 21.9375, -36.3973



142.4790, -13.0541, 33.7829



131.2720, 7.2609, -42.3345

Square

The Square scheme is like the rectangle color scheme, but the four colors are evenly spaced on the color wheel.



142.4790, -13.0541, 33.7829



136.4600, -14.5238, -8.2964



130.5840, 17.4601, -46.9932



143.0560, 15.2554, 6.9669

Rectangle

The Rectangle color scheme consists of four colors that form a rectangle on the color wheel.



142.4790, -13.0541, 33.7829



139.8220, -20.1252, 15.0651



130.5840, 17.4601, -46.9932



138.1770, 21.6047, -22.9572

Sweetspot

The Sweet Spot groups the original color and five complimentary colors.



142.4790, -13.0541, 33.7829



219.7090, -5.2795, 13.4102



141.4770, 13.5688, 34.6617



108.2460, -3.0793, 7.6773



245.0000, 0.0000, 0.0000



117.0000, 0.0000, 0.0000

Same Dimension

The Same Dimension uses a secret algorithm to generate beautiful new colors.



142.4790, -13.0541, 33.7829



174.7650, -20.0971, 52.8261



161.2630, -22.3147, 17.3093



83.8650, -1.9054, 4.5034



62.1830, -30.6562, 79.6465



10.7090, -5.2795, 13.4102

Inverse Universe

The Inverse Universe completely reimagines the original color for something new.



154.5210, 13.0541, -33.7829



193.6480, 20.3865, -52.3113



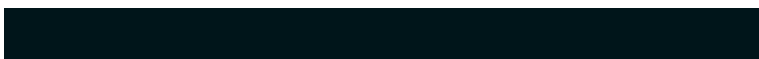
135.7370, 22.3147, -17.3093



85.7220, 1.6161, -5.0182



90.8170, 30.6562, -79.6465



15.2910, 5.2795, -13.4102

Previews

White Background



This preview shows how the YUV color 142.4790, -13.0541, 33.7829 looks on a white background.

Color Contrast Check

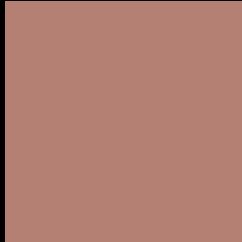
Large Text (above 18pt) WCAG AA ✓ Pass

Any Text WCAG AA × Fail

Large Text (above 18pt) WCAG AAA × Fail

Any Text WCAG AAA × Fail

Black Background



This preview shows how the YUV color 142.4790, -13.0541, 33.7829 looks on a black background.

Color Contrast Check

Large Text (above 18pt) WCAG AA ✓ Pass

Any Text WCAG AA ✓ Pass

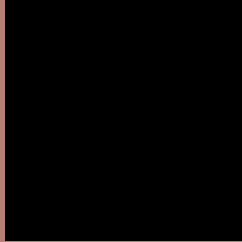
Large Text (above 18pt) WCAG AAA ✓ Pass

Any Text WCAG AAA × Fail

If you want to check with other color combinations, try the [Color Contrast Checker](#).

YUV 142.4790, -13.0541, 33.7829

Background



This preview shows how black text looks on a background with the YUV color 142.4790, -13.0541, 33.7829.



This preview shows how white text looks on a background with the YUV color 142.4790, -13.0541,

Color Blindness Simulation

Color vision deficiency is a very complex topic, and I could not describe the different causes any better than Wikipedia does, so if you want to learn more, you should check out their [article about color blindness](#).

Dichromacy



Original Color

142.4790, -13.0541, 33.7829

Protanopia

140.9270, -9.3310, 6.2030

Deuteranopia

141.9780, -13.3002, 19.3133



Tritanopia

143.4820, -4.1816, 34.6573

Trichromacy



Original Color

142.4790, -13.0541, 33.7829

Protanomaly

141.3520, -10.5265, 16.3543

Deuteranomaly

142.0110, -13.3164, 24.5464

Tritanomaly

142.9720, -7.3812, 34.2276

Monochromacy



Original Color

142.4790, -13.0541, 33.7829

Achromatopsia

142.0000, 0.0000, 0.0000

Achromatomaly

142.2250, -4.5479, 12.0807

CSS Examples

Text

The CSS property to change the color of the text to YUV 142.4790, -13.0541, 33.7829 is called "color". The color property can be set on classes, ids or directly on the HTML element.

This example shows how text in the color `rgb(181, 128, 116)` looks like.

```
.text, #text, p{  
    color:rgb(181, 128, 116)  
}
```

If you want to add a text shadow in that color use the text-shadow property, you can generate a text shadow directly with our [CSS Text Shadow Generator](#).

Here you see how black text with a 4 pixel rgb(181, 128, 116) colored shadow looks like.

```
.shadow{ text-shadow: 4px 4px 2px rgb(181, 128, 116) }
```

Border

The CSS property to change the border of an element to YUV 142.4790, -13.0541, 33.7829 is called "border".

The border property can be set on classes, ids or directly on the HTML element.

This example shows the color as border, it can be applied via the CSS property "border" or "border-color".

```
.border, #border, table{ border:4px solid rgb(181, 128, 116) }
```


If only the border color should be changed use the property border-color.

```
.border{ border-color:rgb(181, 128, 116) }
```

If you want to add a box shadow in that color use:

Here you see how a box with a 4 pixel rgb(181, 128, 116) colored shadow looks like.

```
.boxshadow{ -moz-box-shadow:4px 4px 4px  
4px rgb(181, 128, 116); -webkit-box-  
shadow:4px 4px 4px 4px rgb(181, 128, 116);  
box-shadow:4px 4px 4px 4px rgb(181, 128,  
116) }
```

Background

The CSS property to change the background color of an element to YUV 142.4790, -13.0541, 33.7829 is called "background". The background property can be set on classes, ids or directly on the HTML element.

```
.background, #background, body{  
background: rgb(181, 128, 116) }
```

If only the background color should be changed can be used:

```
.background{ background-color: rgb(181,  
128, 116) }
```

This example shows the color as background, it is applied via the CSS property "background".

To optimize and compress your CSS code, you can use our [online CSS compressor and optimizer](#) based on csstidy. If you want to create a linear or radial gradient as background or border, check our [CSS Gradient Generator](#).

Hey! You found this booklet interesting? Support Converting Colors with the new Membership Option!

The pro membership hides all ads, plus gives you double the colors in the color bucket, and more awesome pro features!

[Learn more, Memberships starting at \\$2.50/m!](#)

**Follow me
on Twitter!**

@ConvertingColor