

Converting Colors

YUV(142.6770, -23.5048,
25.7163)

Have a look what the booklet for
YUV(142.6770, -23.5048, 25.7163)
contains.

YUV(142.6770, -23.5048, 25.7163)	3
<i>Conversions</i>	4
<i>Details</i>	6
<i>Harmonies</i>	12
<i>Previews</i>	24
<i>Color Blindness Simulation</i>	28
<i>CSS Examples</i>	31

Color

**YUV(142.6770, -23.5048,
25.7163)**

Conversions

Conversions Part 1

Format	Color
Hex	AC895F
RGB	172, 137, 95
RGB Percent	67%, 54%, 37%
CMY	0.3255, 0.4627, 0.6275
CMYK	0.00, 0.20, 0.45, 0.33
HSL	33°, 32%, 52%
HSV	33°, 45%, 67%
XYZ	28.0245, 27.4882, 14.6552
YIQ	142.6770, 34.3420, -5.6420

Conversions

Conversions Part 2

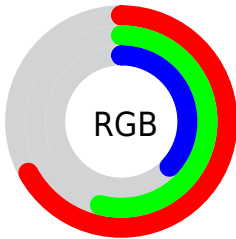
Format	Color
R_{YB}	159, 172, 95
Decimal	11307359
CIE _{Lab}	59.42, 7.69, 27.54
CIE _{LCh}	59, 28.597, 74.405
Yxy	27.4882, 0.3994, 0.3917
Android (android.graphics.Color)	4289497439 (0xFFAC895F)
YUV	142.6770, -23.5048, 25.7163
Hunter-Lab	52.4292, 3.6608, 20.1275

Details

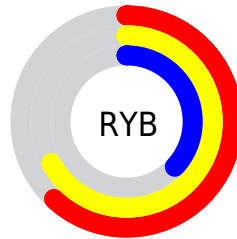
The YUV color **142.6770, -23.5048, 25.7163** is a dark color, and the websafe version is hex **CC9966**. A complement of this color would be **124.3230, 23.5048, -25.7163**, and the grayscale version is **143.0000, 0.0000, 0.0000**.

A 20% lighter version of the original color is **196.6450, -24.9680, 28.3753**, and **91.8230, -21.6047, 22.9572** is the 20% darker color. If you saturate the color by 10%, you get **136.0430, -28.6152, 31.5343**, and if you desaturate by 10%, it is **149.3110, -18.3943, 19.8983**.

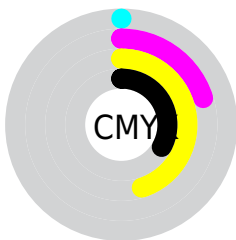
Distribution



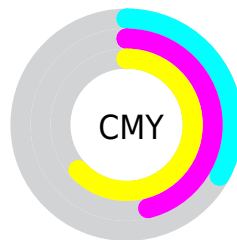
- Red (67%)
- Green (54%)
- Blue (37%)



- Red (62%)
- Yellow (67%)
- Blue (37%)



- Cyan (0%)
- Magenta (20%)
- Yellow (45%)
- Black (33%)



- Cyan (33%)
- Magenta (46%)
- Yellow (63%)

Brightness & Saturation Gradients

These gradients show how the YUV color 142.6770, -23.5048, 25.7163 changes by changing the brightness by 10 percent. The first figure shows a shift by +10% for each color and the second figure -10%.

Similar to the brightness gradients but the following saturation gradients show a change of the YUV color 142.6770, -23.5048, 25.7163 by changing the saturation by 10% instead.

■ 142.6770,
-23.5048, 25.7163

■ 142.6770,
-23.5048, 25.7163

255.0000, 0.0000,
0.0000

■ 117.1930,
-22.7731, 24.3867

■ 196.6450,
-24.9680, 28.3753

■ 91.8230, -21.6047,
22.9572

■ 223.9330,
-25.1100, 27.2458

■ 68.0400, -20.7257,
21.0129

■ 244.0340,
-21.7088, 9.6172

■ 44.8010, -21.5939,
19.4685

■ 251.9220,
-11.7935, 2.6994

■ 25.4720, -12.5577,
14.4951

■ 3.8870, -1.9163,
7.9921

■ 0.0000, 0.0000,

0.0000

■ 142.6770,
-23.5048, 25.7163

■ 142.6770,
-23.5048, 25.7163

■ 136.0430,
-28.6152, 31.5343

■ 149.3110,
-18.3943, 19.8983

■ 129.4090,
-33.7256, 37.3523

■ 155.9450,
-13.2839, 14.0802

■ 123.2480,
-39.5623, 42.7555

■ 162.1060, -7.4473,
8.6770

■ 116.6140,
-44.6727, 48.5735

■ 168.7400, -2.3368,
2.8590

■ 109.9800,
-49.7831, 54.3915

■ 175.3740, 2.7736,
-2.9590

■ 106.6060,
-52.5568, 57.3505

■ 182.0080, 7.8841,
-8.7770

■ 188.6420, 12.9945,
-14.5950

■ 195.3900, 18.5417,
-20.5130

■ 201.4370, 23.9416,
-25.8162

Harmonies

Analogous

The Analogous color harmony consists of three colors that are next to each other on the color wheel.



144.3610, -17.4330, 38.2714



142.6770, -23.5048, 25.7163



140.0830, -22.7189, 6.9432

Triad

The Triadic color harmony groups three colors that are evenly spaced from another and form a triangle on the color wheel.



142.6770, -23.5048, 25.7163



128.9650, 12.8353, -56.9743



146.3280, 16.1073, 13.7443

Complementary

The Complementary color scheme is a pair of colors which are on the opposite of each other on the color wheel.



142.6770, -23.5048, 25.7163



124.3230, 23.5048, -25.7163

Split Complementary

Split-complementary colors differ from the complementary color scheme. The scheme consists of three colors, the original color and two neighbors of the complement color.



142.9270, 24.1930, -13.0910



142.6770, -23.5048, 25.7163



129.1030, 23.6132, -60.6033

Square

The Square scheme is like the rectangle color scheme, but the four colors are evenly spaced on the color wheel.



142.6770, -23.5048, 25.7163



133.1880, -2.0647, -37.8759



135.8480, 27.1899, -41.0857



146.8760, 4.9911, 32.5577

Rectangle

The Rectangle color scheme consists of four colors that form a rectangle on the color wheel.



142.6770, -23.5048, 25.7163



138.4340, -18.4550, -7.3966



135.8480, 27.1899, -41.0857



145.4840, 19.4814, 4.8375

Sweetspot

The Sweet Spot groups the original color and five complimentary colors.



142.6770, -23.5048, 25.7163



213.0630, -8.9051, 9.5917



122.1270, 4.3744, 43.7386



105.2520, -5.5472, 5.9180



240.0000, 0.0000, 0.0000



112.0000, 0.0000, 0.0000

Same Dimension

The Same Dimension uses a secret algorithm to generate beautiful new colors.



142.6770, -23.5048, 25.7163



177.9210, -36.9361, 40.4113



162.3250, -33.1912, 5.8540



83.6260, -2.7736, 2.9590



92.9840, -45.8411, 50.0030



14.5080, -7.1524, 7.4475

Inverse Universe

The Inverse Universe completely reimagines the original color for something new.



124.3230, 23.5048, -25.7163



149.0790, 36.9361, -40.4113



104.6750, 33.1912, -5.8540



81.3740, 2.7736, -2.9590



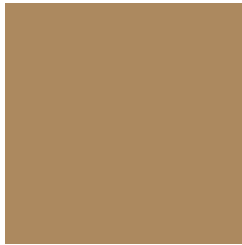
57.0160, 45.8411, -50.0030



8.4920, 7.1524, -7.4475

Previews

White Background



This preview shows how the YUV color 142.6770, -23.5048, 25.7163 looks on a white background.

Color Contrast Check

Large Text (above 18pt) WCAG AA ✓ Pass

Any Text WCAG AA × Fail

Large Text (above 18pt) WCAG AAA × Fail

Any Text WCAG AAA × Fail

Black Background



This preview shows how the YUV color 142.6770, -23.5048, 25.7163 looks on a black background.

Color Contrast Check

Large Text (above 18pt) WCAG AA ✓ Pass

Any Text WCAG AA ✓ Pass

Large Text (above 18pt) WCAG AAA ✓ Pass

Any Text WCAG AAA × Fail

If you want to check with other color combinations, try the [Color Contrast Checker](#).

YUV 142.6770, -23.5048, 25.7163

Background



This preview shows how black text looks on a background with the YUV color 142.6770, -23.5048, 25.7163.



This preview shows how white text looks on a background with the YUV color 142.6770, -23.5048, 25.7163.

25.7163.

Color Blindness Simulation

Color vision deficiency is a very complex topic, and I could not describe the different causes any better than Wikipedia does, so if you want to learn more, you should check out their [article about color blindness](#).

Dichromacy



Original Color

142.6770, -23.5048, 25.7163

Protanopia

141.4580, -21.4248, 11.8763

Deuteranopia

142.6770, -23.5048, 25.7163



Tritanopia

145.5950, -2.2653, 26.6652

Trichromacy



Original Color

142.6770, -23.5048, 25.7163

Protanomaly

141.9640, -22.1673, 16.6946

Deuteranomaly

142.6770, -23.5048, 25.7163

Tritanomaly

144.5320, -10.1223, 26.7204

Monochromacy



Original Color

142.6770, -23.5048, 25.7163

Achromatopsia

143.0000, 0.0000, 0.0000

Achromatomaly

143.1770, -8.4683, 9.4918

CSS Examples

Text

The CSS property to change the color of the text to YUV 142.6770, -23.5048, 25.7163 is called "color". The color property can be set on classes, ids or directly on the HTML element.

This example shows how text in the color `rgb(172, 137, 95)` looks like.

```
.text, #text, p{  
    color:rgb(172, 137, 95)  
}
```

If you want to add a text shadow in that color use the text-shadow property, you can generate a text shadow directly with our [CSS Text Shadow Generator](#).

Here you see how black text with a 4 pixel rgb(172, 137, 95) colored shadow looks like.

```
.shadow{ text-shadow: 4px 4px 2px rgb(172, 137, 95) }
```

Border

The CSS property to change the border of an element to YUV 142.6770, -23.5048, 25.7163 is called "border".

The border property can be set on classes, ids or directly on the HTML element.

This example shows the color as border, it can be applied via the CSS property "border" or "border-color".

```
.border, #border, table{ border:4px solid rgb(172, 137, 95) }
```


If only the border color should be changed use the property `border-color`.

```
.border{ border-color:rgb(172, 137, 95) }
```

If you want to add a box shadow in that color use:

Here you see how a box with a 4 pixel `rgb(172, 137, 95)` colored shadow looks like.

```
.boxshadow{ -moz-box-shadow:4px 4px 4px  
4px rgb(172, 137, 95); -webkit-box-  
shadow:4px 4px 4px 4px rgb(172, 137, 95);  
box-shadow:4px 4px 4px 4px rgb(172, 137,  
95) }
```

Background

The CSS property to change the background color of an element to YUV 142.6770, -23.5048, 25.7163 is called "background". The background property can be set on classes, ids or directly on the HTML element.

```
.background, #background, body{  
background: rgb(172, 137, 95) }
```

If only the background color should be changed can be used:

```
.background{ background-color: rgb(172,  
137, 95) }
```

This example shows the color as background, it is applied via the CSS property "background".

To optimize and compress your CSS code, you can use our [online CSS compressor and optimizer](#) based on csstidy. If you want to create a linear or radial gradient as background or border, check our [CSS Gradient Generator](#).

Hey! You found this booklet interesting? Support Converting Colors with the new Membership Option!

The pro membership hides all ads, plus gives you double the colors in the color bucket, and more awesome pro features!

[Learn more, Memberships starting at \\$2.50/m!](#)

**Follow me
on Twitter!**

@ConvertingColor