

Converting Colors

YUV(142.7450, -13.1853,
29.1646)

Have a look what the booklet for
YUV(142.7450, -13.1853, 29.1646)
contains.

YUV(142.7450, -13.1853, 29.1646)	3
<i>Conversions</i>	4
<i>Details</i>	6
<i>Harmonies</i>	12
<i>Previews</i>	24
<i>Color Blindness Simulation</i>	28
<i>CSS Examples</i>	31

Color

**YUV(142.7450, -13.1853,
29.1646)**

Conversions

Conversions Part 1

Format	Color
Hex	B08374
RGB	176, 131, 116
RGB Percent	69%, 51%, 45%
CMY	0.3098, 0.4863, 0.5451
CMYK	0.00, 0.26, 0.34, 0.31
HSL	15°, 28%, 57%
HSV	15°, 34%, 69%
XYZ	29.1732, 26.7237, 20.1436
YIQ	142.7450, 31.6350, 4.8750

Conversions

Conversions Part 2

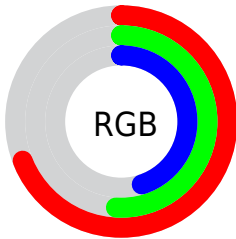
Format	Color
RYB	176, 136, 116
Decimal	11567988
CIELab	58.72, 15.22, 14.86
CIElCh	59, 21.271, 44.326
Yxy	26.7237, 0.3837, 0.3514
Android (android.graphics.Color)	4289758068 (0xFFB08374)
YUV	142.7450, -13.1853, 29.1646
Hunter-Lab	51.6949, 10.2674, 13.0834

Details

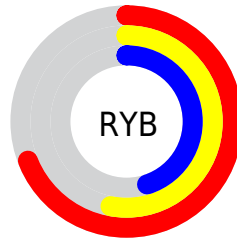
The YUV color $142.7450, -13.1853, 29.1646$ is a dark color, and the websafe version is hex $CC9999$. A complement of this color would be $149.2550, 13.1853, -29.1646$, and the grayscale version is $143.0000, 0.0000, 0.0000$.

A 20% lighter version of the original color is $196.8270, -14.2117, 31.7237$, and $91.7770, -11.7221, 26.5056$ is the 20% darker color. If you saturate the color by 10%, you get $133.0620, -17.2856, 37.6566$, and if you desaturate by 10%, it is $152.4280, -9.0850, 20.6726$.

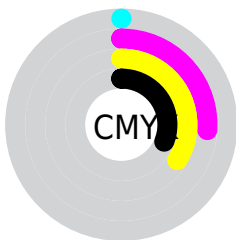
Distribution



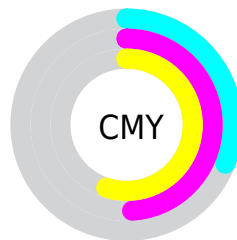
- Red (69%)
- Green (51%)
- Blue (45%)



- Red (69%)
- Yellow (53%)
- Blue (45%)



- Cyan (0%)
- Magenta (26%)
- Yellow (34%)
- Black (31%)



- Cyan (31%)
- Magenta (49%)
- Yellow (55%)

Brightness & Saturation Gradients

These gradients show how the YUV color 142.7450, -13.1853, 29.1646 changes by changing the brightness by 10 percent. The first figure shows a shift by +10% for each color and the second figure -10%.

Similar to the brightness gradients but the following saturation gradients show a change of the YUV color 142.7450, -13.1853, 29.1646 by changing the saturation by 10% instead.

■ 142.7450,
-13.1853, 29.1646

■ 142.7450,
-13.1853, 29.1646

255.0000, 0.0000,
0.0000

■ 117.1470,
-12.8905, 27.9351

■ 196.8270,
-14.2117, 31.7237

■ 91.7770, -11.7221,
26.5056

■ 222.9190,
-13.7641, 28.1350

■ 67.9940, -10.8430,
24.5613

■ 242.5470, -9.6367,
10.9213

■ 45.2110, -9.9640,
22.6170

254.6580, -1.3104,
0.2999

■ 23.1570, -11.4164,
21.7873

■ 6.2790, -3.0955,
12.9103

■ 0.0000, 0.0000,

0.0000

■ 142.7450,
-13.1853, 29.1646

■ 142.7450,
-13.1853, 29.1646

■ 133.0620,
-17.2856, 37.6566

■ 152.4280, -9.0850,
20.6726

■ 123.4930,
-20.9490, 46.0486

■ 161.9970, -5.4215,
12.2806

■ 113.2230,
-24.7599, 55.0554

■ 172.2670, -1.6106,
3.2738

■ 103.6540,
-28.4234, 63.4474

■ 181.8360, 2.0529,
-5.1182

■ 93.9710, -32.5237,
71.9394

■ 191.5190, 6.1531,
-13.6102

■ 84.2880, -36.6240,
80.4314

■ 201.2020, 10.2534,
-22.1022

■ 78.4520, -38.6768,
85.5496

■ 210.7710, 13.9169,
-30.4942

■ 220.8130, 16.8542,
-39.3010

■ 228.4440, 13.0921,
-45.9934

Harmonies

Analogous

The Analogous color harmony consists of three colors that are next to each other on the color wheel.



143.8190, -5.3338, 30.8537



142.7450, -13.1853, 29.1646



141.5390, -17.5207, 19.6983

Triad

The Triadic color harmony groups three colors that are evenly spaced from another and form a triangle on the color wheel.



142.7450, -13.1853, 29.1646



134.6670, -1.8078, -26.8950



141.5270, 17.4882, -9.2322

Complementary

The Complementary color scheme is a pair of colors which are on the opposite of each other on the color wheel.



142.7450, -13.1853, 29.1646



149.2550, 13.1853, -29.1646

Split Complementary

Split-complementary colors differ from the complementary color scheme. The scheme consists of three colors, the original color and two neighbors of the complement color.



137.5740, 19.4370, -27.6904



142.7450, -13.1853, 29.1646



132.9350, 8.4130, -38.5310

Square

The Square scheme is like the rectangle color scheme, but the four colors are evenly spaced on the color wheel.



142.7450, -13.1853, 29.1646



137.2470, -11.4608, -10.7406



133.6990, 16.4174, -39.2010



143.5680, 12.0450, 10.0259

Rectangle

The Rectangle color scheme consists of four colors that form a rectangle on the color wheel.



142.7450, -13.1853, 29.1646



140.0710, -17.7830, 10.4617



133.6990, 16.4174, -39.2010



140.1240, 18.6729, -15.8947

Sweetspot

The Sweet Spot groups the original color and five complimentary colors.



142.7450, -13.1853, 29.1646



216.8120, -4.8373, 11.5659



139.0700, 10.8115, 32.3876



106.9470, -2.9319, 7.0625



242.0000, 0.0000, 0.0000



115.0000, 0.0000, 0.0000

Same Dimension

The Same Dimension uses a secret algorithm to generate beautiful new colors.



142.7450, -13.1853, 29.1646



177.4930, -20.9490, 46.0486



159.7680, -21.5776, 14.2355



84.4520, -2.1948, 3.9886



68.0530, -33.5501, 74.4985



11.2960, -5.5689, 12.8954

Inverse Universe

The Inverse Universe completely reimagines the original color for something new.



149.2550, 13.1853, -29.1646



187.5070, 20.9490, -46.0486



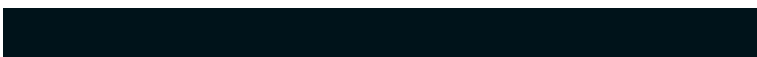
131.6450, 21.8670, -13.7207



85.1350, 1.9054, -4.5034



84.9470, 33.5501, -74.4985



14.1170, 5.8583, -12.3806

Previews

White Background



This preview shows how the YUV color 142.7450, -13.1853, 29.1646 looks on a white background.

Color Contrast Check

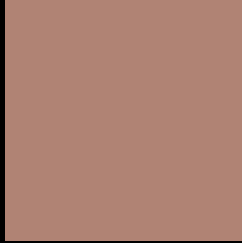
Large Text (above 18pt) WCAG AA ✓ Pass

Any Text WCAG AA × Fail

Large Text (above 18pt) WCAG AAA × Fail

Any Text WCAG AAA × Fail

Black Background



This preview shows how the YUV color 142.7450, -13.1853, 29.1646 looks on a black background.

Color Contrast Check

Large Text (above 18pt) WCAG AA ✓ Pass

Any Text WCAG AA ✓ Pass

Large Text (above 18pt) WCAG AAA ✓ Pass

Any Text WCAG AAA × Fail

If you want to check with other color combinations, try the [Color Contrast Checker](#).

YUV 142.7450, -13.1853, 29.1646

Background



This preview shows how black text looks on a background with the YUV color 142.7450, -13.1853, 29.1646.



This preview shows how white text looks on a background with the YUV color 142.7450, -13.1853,

Color Blindness Simulation

Color vision deficiency is a very complex topic, and I could not describe the different causes any better than Wikipedia does, so if you want to learn more, you should check out their [article about color blindness](#).

Dichromacy



Original Color

142.7450, -13.1853, 29.1646

Protanopia

141.1120, -9.9152, 6.9178

Deuteranopia

141.9780, -13.3002, 19.3133



Tritanopia

144.0900, -3.0024, 29.7391

Trichromacy



Original Color

142.7450, -13.1853, 29.1646

Protanomaly

141.5260, -11.1053, 15.3247

Deuteranomaly

142.0000, -13.3110, 22.8020

Tritanomaly

143.4660, -6.6387, 29.4093

Monochromacy



Original Color

142.7450, -13.1853, 29.1646

Achromatopsia

143.0000, 0.0000, 0.0000

Achromatomaly

143.1000, -4.9793, 10.4363

CSS Examples

Text

The CSS property to change the color of the text to YUV 142.7450, -13.1853, 29.1646 is called "color". The color property can be set on classes, ids or directly on the HTML element.

This example shows how text in the color `rgb(176, 131, 116)` looks like.

```
.text, #text, p{  
    color:rgb(176, 131, 116)  
}
```

If you want to add a text shadow in that color use the text-shadow property, you can generate a text shadow directly with our [CSS Text Shadow Generator](#).

Here you see how black text with a 4 pixel rgb(176, 131, 116) colored shadow looks like.

```
.shadow{ text-shadow: 4px 4px 2px rgb(176, 131, 116) }
```

Border

The CSS property to change the border of an element to YUV 142.7450, -13.1853, 29.1646 is called "border".

The border property can be set on classes, ids or directly on the HTML element.

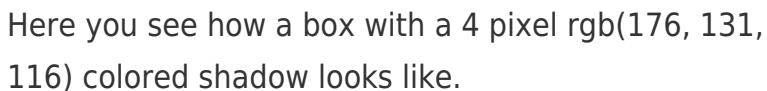
This example shows the color as border, it can be applied via the CSS property "border" or "border-color".

```
.border, #border, table{ border:4px solid rgb(176, 131, 116) }
```


If only the border color should be changed use the property `border-color`.

```
.border{ border-color:rgb(176, 131, 116) }
```

If you want to add a box shadow in that color use:



Here you see how a box with a 4 pixel `rgb(176, 131, 116)` colored shadow looks like.

```
.boxshadow{ -moz-box-shadow:4px 4px 4px 4px rgb(176, 131, 116); -webkit-box-shadow:4px 4px 4px 4px rgb(176, 131, 116); box-shadow:4px 4px 4px 4px rgb(176, 131, 116) }
```

Background

The CSS property to change the background color of an element to YUV 142.7450, -13.1853, 29.1646 is called "background". The background property can be set on classes, ids or directly on the HTML element.

```
.background, #background, body{  
background: rgb(176, 131, 116) }
```

If only the background color should be changed can be used:

```
.background{ background-color: rgb(176,  
131, 116) }
```

This example shows the color as background, it is applied via the CSS property "background".

To optimize and compress your CSS code, you can use our [online CSS compressor and optimizer](#) based on csstidy. If you want to create a linear or radial gradient as background or border, check our [CSS Gradient Generator](#).

Hey! You found this booklet interesting? Support Converting Colors with the new Membership Option!

The pro membership hides all ads, plus gives you double the colors in the color bucket, and more awesome pro features!

[Learn more, Memberships starting at \\$2.50/m!](#)

**Follow me
on Twitter!**

@ConvertingColor