

Converting Colors

YUV(142.7760, -27.0046,
28.2604)

Have a look what the booklet for
YUV(142.7760, -27.0046, 28.2604)
contains.

YUV(142.7760, -27.0046, 28.2604)	3
<i>Conversions</i>	4
<i>Details</i>	6
<i>Harmonies</i>	12
<i>Previews</i>	24
<i>Color Blindness Simulation</i>	28
<i>CSS Examples</i>	31

Color

**YUV(142.7760, -27.0046,
28.2604)**

Conversions

Conversions Part 1

Format	Color
Hex	AF8958
RGB	175, 137, 88
RGB Percent	69%, 54%, 35%
CMY	0.3137, 0.4627, 0.6549
CMYK	0.00, 0.22, 0.50, 0.31
HSL	34°, 35%, 52%
HSV	34°, 50%, 69%
XYZ	28.3863, 27.7099, 13.0849
YIQ	142.7760, 38.3770, -7.1830

Conversions

Conversions Part 2

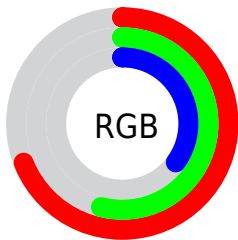
Format	Color
R_{YB}	155, 175, 88
Decimal	11503960
CIE Lab	59.63, 8.24, 31.69
CIE LCh	60, 32.747, 75.421
Yxy	27.7099, 0.4103, 0.4005
Android (android.graphics.Color)	4289694040 (0xFFAF8958)
YUV	142.7760, -27.0046, 28.2604
Hunter-Lab	52.6402, 4.1362, 22.1102

Details

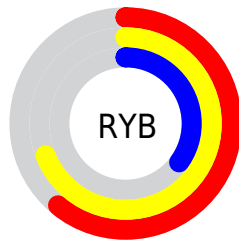
The YUV color $142.7760, -27.0046, 28.2604$ is a dark color, and the websafe version is hex $CC9966$. A complement of this color would be $120.2240, 27.0046, -28.2604$, and the grayscale version is $143.0000, 0.0000, 0.0000$.

A 20% lighter version of the original color is $196.7440, -28.4678, 30.9195$, and $91.6230, -24.9571, 24.8866$ is the 20% darker color. If you saturate the color by 10%, you get $136.0280, -32.5518, 34.1784$, and if you desaturate by 10%, it is $149.5240, -21.4573, 22.3425$.

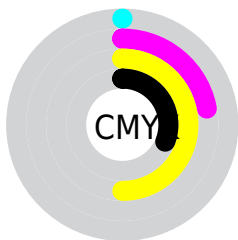
Distribution



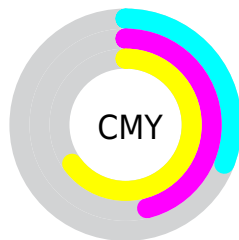
- Red (69%)
- Green (54%)
- Blue (35%)



- Red (61%)
- Yellow (69%)
- Blue (35%)



- Cyan (0%)
- Magenta (22%)
- Yellow (50%)
- Black (31%)



- Cyan (31%)
- Magenta (46%)
- Yellow (65%)

Brightness & Saturation Gradients

These gradients show how the YUV color 142.7760, -27.0046, 28.2604 changes by changing the brightness by 10 percent. The first figure shows a shift by +10% for each color and the second figure -10%.

Similar to the brightness gradients but the following saturation gradients show a change of the YUV color 142.7760, -27.0046, 28.2604 by changing the saturation by 10% instead.

■ 142.7760,
-27.0046, 28.2604

■ 142.7760,
-27.0046, 28.2604

■ 255.0000, 0.0000,
0.0000

■ 116.9930,
-26.1255, 26.3161

■ 196.7440,
-28.4678, 30.9195

■ 91.6230, -24.9571,
24.8866

■ 223.0210,
-28.6044, 28.0456

■ 67.7260, -24.5149,
23.0423

■ 243.2360,
-24.7663, 10.3170

■ 45.2850, -22.3255,
20.7981

■ 251.1240,
-14.8511, 3.3993

■ 25.7710, -12.7051,
15.1098

■ 254.3160, -2.6208,
0.5999

■ 4.7840, -2.3585,
9.8364

■ 0.0000, 0.0000,

0.0000

■ 142.7760,
-27.0046, 28.2604

■ 142.7760,
-27.0046, 28.2604

■ 136.0280,
-32.5518, 34.1784

■ 149.5240,
-21.4573, 22.3425

■ 129.9810,
-37.9516, 39.4817

■ 155.5710,
-16.0575, 17.0392

■ 123.2330,
-43.4989, 45.3997

■ 162.2050,
-10.9471, 11.2212

■ 116.5990,
-48.6093, 51.2177

■ 168.9530, -5.3998,
5.3032

■ 110.4380,
-54.4459, 56.6209

■ 175.1140, 0.4368,
-0.1000

■ 181.7480, 5.5472,
-5.9180

■ 188.4960, 11.0945,
-11.8360

■ 194.5430, 16.4943,
-17.1392

■ 201.2910, 22.0415,
-23.0572

Harmonies

Analogous

The Analogous color harmony consists of three colors that are next to each other on the color wheel.



144.4110, -19.9226, 43.4896



142.7760, -27.0046, 28.2604



140.4590, -26.3553, 6.6135

Triad

The Triadic color harmony groups three colors that are evenly spaced from another and form a triangle on the color wheel.



142.7760, -27.0046, 28.2604



123.0060, 17.2520, -73.6733



147.5070, 17.9910, 16.2184

Complementary

The Complementary color scheme is a pair of colors which are on the opposite of each other on the color wheel.



142.7760, -27.0046, 28.2604



120.2240, 27.0046, -28.2604

Split Complementary

Split-complementary colors differ from the complementary color scheme. The scheme consists of three colors, the original color and two neighbors of the complement color.



143.1270, 27.5454, -15.0204



142.7760, -27.0046, 28.2604



122.1050, 30.5142, -80.7761

Square

The Square scheme is like the rectangle color scheme, but the four colors are evenly spaced on the color wheel.



142.7760, -27.0046, 28.2604



130.9590, -1.4588, -45.5680



134.6450, 31.7270, -49.6777



147.4360, 5.7011, 38.2056

Rectangle

The Rectangle color scheme consists of four colors that form a rectangle on the color wheel.



142.7760, -27.0046, 28.2604



138.1410, -20.7755, -9.7707



134.6450, 31.7270, -49.6777



146.4780, 21.9493, 6.5968

Sweetspot

The Sweet Spot groups the original color and five complimentary colors.



142.7760, -27.0046, 28.2604



214.3190, -10.5103, 11.1212



118.4590, 4.2107, 49.5865



107.3230, -6.5682, 6.7327



242.0000, 0.0000, 0.0000



115.0000, 0.0000, 0.0000

Same Dimension

The Same Dimension uses a secret algorithm to generate beautiful new colors.



142.7760, -27.0046, 28.2604



176.2760, -42.0411, 44.4849



163.8860, -37.4118, 6.2390



83.6260, -2.7736, 2.9590



94.7450, -46.7093, 48.4586



14.5080, -7.1524, 7.4475

Inverse Universe

The Inverse Universe completely reimagines the original color for something new.



120.2240, 27.0046, -28.2604



141.1370, 42.3305, -43.9701



99.1140, 37.4118, -6.2390



81.3740, 2.7736, -2.9590



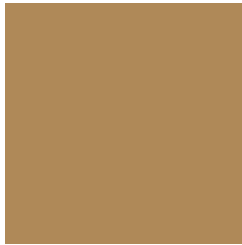
55.8420, 46.4199, -48.9734



8.4920, 7.1524, -7.4475

Previews

White Background



This preview shows how the YUV color 142.7760, -27.0046, 28.2604 looks on a white background.

Color Contrast Check

Large Text (above 18pt) WCAG AA ✓ Pass

Any Text WCAG AA × Fail

Large Text (above 18pt) WCAG AAA × Fail

Any Text WCAG AAA × Fail

Black Background



This preview shows how the YUV color 142.7760, -27.0046, 28.2604 looks on a black background.

Color Contrast Check

Large Text (above 18pt) WCAG AA ✓ Pass

Any Text WCAG AA ✓ Pass

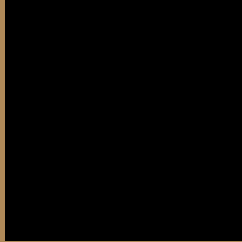
Large Text (above 18pt) WCAG AAA ✓ Pass

Any Text WCAG AAA × Fail

If you want to check with other color combinations, try the [Color Contrast Checker](#).

YUV 142.7760, -27.0046, 28.2604

Background



This preview shows how black text looks on a background with the YUV color 142.7760, -27.0046, 28.2604.



This preview shows how white text looks on a background with the YUV color 142.7760, -27.0046,

Color Blindness Simulation

Color vision deficiency is a very complex topic, and I could not describe the different causes any better than Wikipedia does, so if you want to learn more, you should check out their [article about color blindness](#).

Dichromacy



Original Color

142.7760, -27.0046, 28.2604

Protanopia

141.8450, -25.0666, 13.2909

Deuteranopia

142.4770, -26.8572, 27.6457



Tritanopia

146.7910, -2.8550, 29.1243

Trichromacy



Original Color

142.7760, -27.0046, 28.2604

Protanomaly

142.0630, -25.6671, 19.2387

Deuteranomaly

142.4770, -26.8572, 27.6457

Tritanomaly

145.2010, -11.4381, 28.7647

Monochromacy



Original Color

142.7760, -27.0046, 28.2604

Achromatopsia

143.0000, 0.0000, 0.0000

Achromatomaly

143.1340, -9.9261, 10.4065

CSS Examples

Text

The CSS property to change the color of the text to YUV 142.7760, -27.0046, 28.2604 is called "color". The color property can be set on classes, ids or directly on the HTML element.

This example shows how text in the color `rgb(175, 137, 88)` looks like.

```
.text, #text, p{  
    color:rgb(175, 137, 88)  
}
```

If you want to add a text shadow in that color use the text-shadow property, you can generate a text shadow directly with our [CSS Text Shadow Generator](#).

Here you see how black text with a 4 pixel rgb(175, 137, 88) colored shadow looks like.

```
.shadow{ text-shadow: 4px 4px 2px rgb(175, 137, 88) }
```

Border

The CSS property to change the border of an element to YUV 142.7760, -27.0046, 28.2604 is called "border".

The border property can be set on classes, ids or directly on the HTML element.

This example shows the color as border, it can be applied via the CSS property "border" or "border-color".

```
.border, #border, table{ border:4px solid rgb(175, 137, 88) }
```


If only the border color should be changed use the property `border-color`.

```
.border{ border-color:rgb(175, 137, 88) }
```

If you want to add a box shadow in that color use:

Here you see how a box with a 4 pixel `rgb(175, 137, 88)` colored shadow looks like.

```
.boxshadow{ -moz-box-shadow:4px 4px 4px  
4px rgb(175, 137, 88); -webkit-box-  
shadow:4px 4px 4px 4px rgb(175, 137, 88);  
box-shadow:4px 4px 4px 4px rgb(175, 137,  
88) }
```

Background

The CSS property to change the background color of an element to YUV 142.7760, -27.0046, 28.2604 is called "background". The background property can be set on classes, ids or directly on the HTML element.

```
.background, #background, body{  
background: rgb(175, 137, 88) }
```

If only the background color should be changed can be used:

```
.background{ background-color: rgb(175,  
137, 88) }
```

This example shows the color as background, it is applied via the CSS property "background".

To optimize and compress your CSS code, you can use our [online CSS compressor and optimizer](#) based on csstidy. If you want to create a linear or radial gradient as background or border, check our [CSS Gradient Generator](#).

Hey! You found this booklet interesting? Support Converting Colors with the new Membership Option!

The pro membership hides all ads, plus gives you double the colors in the color bucket, and more awesome pro features!

[Learn more, Memberships starting at \\$2.50/m!](#)

**Follow me
on Twitter!**

@ConvertingColor