

Converting Colors

YUV(142.7900, -7.7845,
70.3442)

Have a look what the booklet for
YUV(142.7900, -7.7845, 70.3442)
contains.

YUV(142.7900, -7.7845, 70.3442)	3
<i>Conversions</i>	4
<i>Details</i>	6
<i>Harmonies</i>	12
<i>Previews</i>	24
<i>Color Blindness Simulation</i>	28
<i>CSS Examples</i>	31

Color

**YUV(142.7900, -7.7845,
70.3442)**

Conversions

Conversions Part 1

Format	Color
Hex	DF697F
RGB	223, 105, 127
RGB Percent	87%, 41%, 50%
CMY	0.1255, 0.5882, 0.5020
CMYK	0.00, 0.53, 0.43, 0.13
HSL	349°, 65%, 64%
HSV	349°, 53%, 87%
XYZ	39.3138, 27.3234, 23.2806
YIQ	142.7900, 63.2660, 31.8580

Conversions

Conversions Part 2

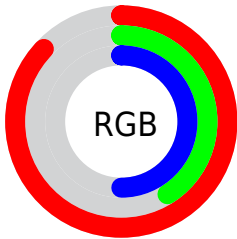
Format	Color
RYB	223, 105, 127
Decimal	14641535
CIELab	59.27, 48.09, 10.19
CIELCh	59, 49.156, 11.960
Yxy	27.3234, 0.4372, 0.3039
Android (android.graphics.Color)	4292831615 (0xFFDF697F)
YUV	142.7900, -7.7845, 70.3442
Hunter-Lab	52.2718, 42.7746, 10.1840

Details

The YUV color **142.7900, -7.7845, 70.3442** is a dark color, and the websafe version is hex **CC6666**. A complement of this color would be **185.2100, 7.7845, -70.3442**, and the grayscale version is **143.0000, 0.0000, 0.0000**.

A 20% lighter version of the original color is **190.0980, -4.9783, 56.9191**, and **87.8650, -4.8634, 66.7704** is the 20% darker color. If you saturate the color by 10%, you get **127.8240, -9.2802, 83.4694**, and if you desaturate by 10%, it is **157.7560, -6.2887, 57.2190**.

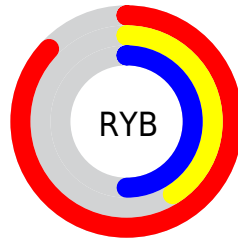
Distribution



Red (87%)

Green (41%)

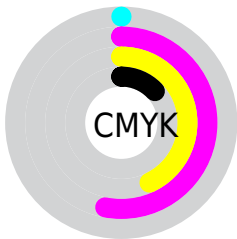
Blue (50%)



Red (87%)

Yellow (41%)

Blue (50%)

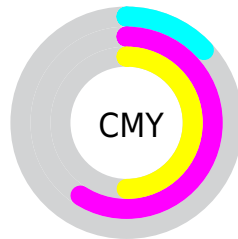


Cyan (0%)

Magenta (53%)

Yellow (43%)

Black (13%)



Cyan (13%)

Magenta (59%)

Yellow (50%)

Brightness & Saturation Gradients

These gradients show how the YUV color 142.7900, -7.7845, 70.3442 changes by changing the brightness by 10 percent. The first figure shows a shift by +10% for each color and the second figure -10%.

Similar to the brightness gradients but the following saturation gradients show a change of the YUV color 142.7900, -7.7845, 70.3442 by changing the saturation by 10% instead.

■ 142.7900, -7.7845,
70.3442

■ 142.7900, -7.7845,
70.3442

255.0000, 0.0000,
0.0000

■ 115.1210, -6.4687,
68.2999

■ 190.0980, -4.9783,
56.9191

■ 87.8650, -4.8634,
66.7704

■ 209.6120, -1.2877,
39.8053

■ 59.0760, -1.5165,
66.5853

■ 229.8270, 2.5503,
22.0767

■ 35.5700, -0.7740,
61.7671

■ 249.1300, 2.8939,
5.1480

■ 24.9890, -6.4036,
47.3676

■ 16.3740, -7.0864,
32.9980

■ 1.4950, -0.7370,

3.0739

■ 0.0000, 0.0000,
0.0000

■ 142.7900, -7.7845,
70.3442

■ 142.7900, -7.7845,
70.3442

■ 127.8240, -9.2802,
83.4694

■ 157.7560, -6.2887,
57.2190

■ 112.2710,
-10.4866, 97.1093

■ 173.3090, -5.0823,
43.5790

■ 97.3050, -11.9824,
110.2345

■ 188.2750, -3.5866,
30.4538

■ 82.2250, -13.9149,
123.4597

■ 203.3550, -1.6540,
17.2287

■ 71.4650, -14.5262,
132.8962

■ 218.9080, -0.4476,
3.5887

■ 233.8740, 1.0481,
-9.5365

■ 245.3180, 4.2802,
-19.5729

■ 245.4320, 4.7170,
-19.6729

Harmonies

Analogous

The Analogous color harmony consists of three colors that are next to each other on the color wheel.



145.5550, 12.0514, 54.7643



142.7900, -7.7845, 70.3442



141.7080, -26.9710, 64.2771

Triad

The Triadic color harmony groups three colors that are evenly spaced from another and form a triangle on the color wheel.



142.7900, -7.7845, 70.3442



131.0330, -27.1313, -24.5849



116.5210, 52.9871, -102.1889

Complementary

The Complementary color scheme is a pair of colors which are on the opposite of each other on the color wheel.



142.7900, -7.7845, 70.3442



185.2100, 7.7845, -70.3442

Split Complementary

Split-complementary colors differ from the complementary color scheme. The scheme consists of three colors, the original color and two neighbors of the complement color.



117.7800, 40.0415, -103.2931



142.7900, -7.7845, 70.3442



113.1730, 0.4077, -84.3437

Square

The Square scheme is like the rectangle color scheme, but the four colors are evenly spaced on the color wheel.



142.7900, -7.7845, 70.3442



136.8930, -41.3592, 12.3718



114.3940, 21.9908, -100.3235



137.9470, 43.9031, -35.0335

Rectangle

The Rectangle color scheme consists of four colors that form a rectangle on the color wheel.



142.7900, -7.7845, 70.3442



140.9870, -36.9686, 50.8774



114.3940, 21.9908, -100.3235



117.5980, 49.4982, -103.1334

Sweetspot

The Sweet Spot groups the original color and five complimentary colors.



142.7900, -7.7845, 70.3442



227.1710, -2.5493, 24.4060



146.5580, 37.6859, 45.9916



111.0450, -1.5012, 14.8695



0.0000, 0.0000, 0.0000



128.0000, 0.0000, 0.0000

Same Dimension

The Same Dimension uses a secret algorithm to generate beautiful new colors.



142.7900, -7.7845, 70.3442



145.5590, -10.6286, 95.9798



160.8270, -27.5227, 54.5257



104.5170, -0.7479, 6.5626



56.3860, -11.5293, 104.9015



15.3780, -3.1444, 28.6095

Inverse Universe

The Inverse Universe completely reimagines the original color for something new.



142.7900, -7.7845, 70.3442



145.5590, -10.6286, 95.9798



167.1730, 27.5227, -54.5257



104.5170, -0.7479, 6.5626



56.3860, -11.5293, 104.9015



15.3780, -3.1444, 28.6095

Previews

White Background



This preview shows how the YUV color 142.7900, -7.7845, 70.3442 looks on a white background.

Color Contrast Check

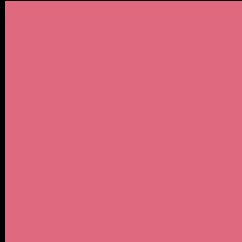
Large Text (above 18pt) WCAG AA ✓ Pass

Any Text WCAG AA × Fail

Large Text (above 18pt) WCAG AAA × Fail

Any Text WCAG AAA × Fail

Black Background



This preview shows how the YUV color 142.7900, -7.7845, 70.3442 looks on a black background.

Color Contrast Check

Large Text (above 18pt) WCAG AA ✓ Pass

Any Text WCAG AA ✓ Pass

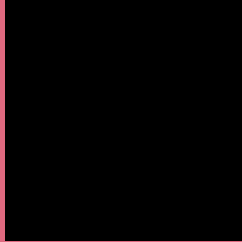
Large Text (above 18pt) WCAG AAA ✓ Pass

Any Text WCAG AAA × Fail

If you want to check with other color combinations, try the [Color Contrast Checker](#).

YUV 142.7900, -7.7845, 70.3442

Background



This preview shows how black text looks on a background with the YUV color 142.7900, -7.7845, 70.3442.



This preview shows how white text looks on a background with the YUV color 142.7900, -7.7845,

Color Blindness Simulation

Color vision deficiency is a very complex topic, and I could not describe the different causes any better than Wikipedia does, so if you want to learn more, you should check out their [article about color blindness](#).

Dichromacy



Original Color

142.7900, -7.7845, 70.3442

Protanopia

143.1680, 1.8892, 0.7297

Deuteranopia

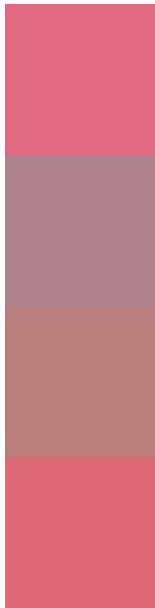
144.2490, -10.9688, 18.1986



Tritanopia

142.2970, -13.4574, 69.8995

Trichromacy



Original Color

142.7900, -7.7845, 70.3442

Protanomaly

143.4100, -1.6811, 25.9504

Deuteranomaly

143.7120, -9.7180, 37.0866

Tritanomaly

142.1660, -11.4208, 70.0144

Monochromacy



Original Color

142.7900, -7.7845, 70.3442

Achromatopsia

143.0000, 0.0000, 0.0000

Achromatomaly

142.7690, -2.8441, 25.6356

CSS Examples

Text

The CSS property to change the color of the text to YUV 142.7900, -7.7845, 70.3442 is called "color". The color property can be set on classes, ids or directly on the HTML element.

This example shows how text in the color `rgb(223, 105, 127)` looks like.

```
.text, #text, p{  
    color:rgb(223, 105, 127)  
}
```

If you want to add a text shadow in that color use the text-shadow property, you can generate a text shadow directly with our [CSS Text Shadow Generator](#).

Here you see how black text with a 4 pixel rgb(223, 105, 127) colored shadow looks like.

```
.shadow{ text-shadow: 4px 4px 2px rgb(223, 105, 127) }
```

Border

The CSS property to change the border of an element to YUV 142.7900, -7.7845, 70.3442 is called "border". The border property can be set on classes, ids or directly on the HTML element.

This example shows the color as border, it can be applied via the CSS property "border" or "border-color".

```
.border, #border, table{ border:4px solid rgb(223, 105, 127) }
```


If only the border color should be changed use the property `border-color`.

```
.border{ border-color:rgb(223, 105, 127) }
```

If you want to add a box shadow in that color use:

Here you see how a box with a 4 pixel `rgb(223, 105, 127)` colored shadow looks like.

```
.boxshadow{ -moz-box-shadow:4px 4px 4px 4px rgb(223, 105, 127); -webkit-box-shadow:4px 4px 4px 4px rgb(223, 105, 127); box-shadow:4px 4px 4px 4px rgb(223, 105, 127) }
```

Background

The CSS property to change the background color of an element to YUV 142.7900, -7.7845, 70.3442 is called "background". The background property can be set on classes, ids or directly on the HTML element.

```
.background, #background, body{  
background: rgb(223, 105, 127) }
```

If only the background color should be changed can be used:

```
.background{ background-color: rgb(223,  
105, 127) }
```

This example shows the color as background, it is applied via the CSS property "background".

To optimize and compress your CSS code, you can use our [online CSS compressor and optimizer](#) based on csstidy. If you want to create a linear or radial gradient as background or border, check our [CSS Gradient Generator](#).

Hey! You found this booklet interesting? Support Converting Colors with the new Membership Option!

The pro membership hides all ads, plus gives you double the colors in the color bucket, and more awesome pro features!

[Learn more, Memberships starting at \\$2.50/m!](#)

**Follow me
on Twitter!**

@ConvertingColor