

Converting Colors

YUV(142.8000, -16.6634,
24.7314)

Have a look what the booklet for
YUV(142.8000, -16.6634, 24.7314)
contains.

YUV(142.8000, -16.6634, 24.7314)	3
<i>Conversions</i>	4
<i>Details</i>	6
<i>Harmonies</i>	12
<i>Previews</i>	24
<i>Color Blindness Simulation</i>	28
<i>CSS Examples</i>	31

Color

**YUV(142.8000, -16.6634,
24.7314)**

Conversions

Conversions Part 1

Format	Color
Hex	AB876D
RGB	171, 135, 109
RGB Percent	67%, 53%, 43%
CMY	0.3294, 0.4706, 0.5725
CMYK	0.00, 0.21, 0.36, 0.33
HSL	25°, 27%, 55%
HSV	25°, 36%, 67%
XYZ	28.2189, 27.0900, 18.2096
YIQ	142.8000, 29.8020, -0.4540

Conversions

Conversions Part 2

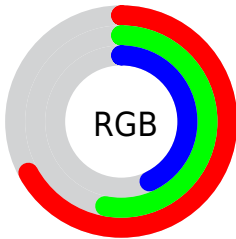
Format	Color
R_{YB}	171, 154, 109
Decimal	11241325
CIE Lab	59.06, 10.03, 19.22
CIE LCh	59, 21.681, 62.433
Yxy	27.0900, 0.3838, 0.3685
Android (android.graphics.Color)	4289431405 (0xFFAB876D)
YUV	142.8000, -16.6634, 24.7314
Hunter-Lab	52.0481, 5.6932, 15.6904

Details

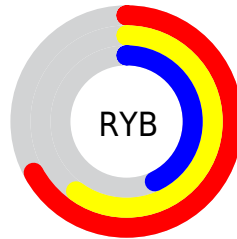
The YUV color $142.8000, -16.6634, 24.7314$ is a dark color, and the websafe version is hex $CC9966$. A complement of this color would be $137.2000, 16.6634, -24.7314$, and the grayscale version is $143.0000, 0.0000, 0.0000$.

A 20% lighter version of the original color is $196.5830, -17.5424, 26.6757$, and $91.8320, -15.2002, 22.0723$ is the 20% darker color. If you saturate the color by 10%, you get $134.9920, -21.1951, 31.5790$, and if you desaturate by 10%, it is $150.6080, -12.1317, 17.8838$.

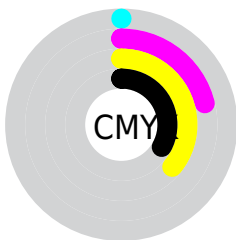
Distribution



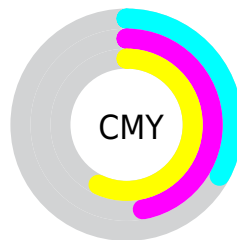
- Red (67%)
- Green (53%)
- Blue (43%)



- Red (67%)
- Yellow (60%)
- Blue (43%)



- Cyan (0%)
- Magenta (21%)
- Yellow (36%)
- Black (33%)



- Cyan (33%)
- Magenta (47%)
- Yellow (57%)

Brightness & Saturation Gradients

These gradients show how the YUV color 142.8000, -16.6634, 24.7314 changes by changing the brightness by 10 percent. The first figure shows a shift by +10% for each color and the second figure -10%.

Similar to the brightness gradients but the following saturation gradients show a change of the YUV color 142.8000, -16.6634, 24.7314 by changing the saturation by 10% instead.

■ 142.8000,
-16.6634, 24.7314

■ 142.8000,
-16.6634, 24.7314

255.0000, 0.0000,
0.0000

■ 117.3160,
-15.9318, 23.4019

■ 196.5830,
-17.5424, 26.6757

■ 91.8320, -15.2002,
22.0723

■ 224.4690,
-17.9792, 26.7757

■ 68.3480, -14.4686,
20.7428

■ 243.9830,
-14.2886, 9.6619

■ 45.5650, -13.5895,
18.7985

■ 253.7460, -4.8048,
1.0998

■ 24.8960, -12.2737,
16.7542

■ 4.4850, -2.2111,
9.2217

■ 0.0000, 0.0000,

0.0000

■ 142.8000,
-16.6634, 24.7314

■ 142.8000,
-16.6634, 24.7314

■ 134.9920,
-21.1951, 31.5790

■ 150.6080,
-12.1317, 17.8838

■ 127.1840,
-25.7267, 38.4266

■ 158.4160, -7.6001,
11.0362

■ 119.3760,
-30.2584, 45.2742

■ 166.2240, -3.0684,
4.1886

■ 111.5680,
-34.7900, 52.1219

■ 174.0320, 1.4632,
-2.6591

■ 103.6460,
-39.7585, 59.0695

■ 181.8400, 5.9949,
-9.5067

■ 95.8380, -44.2901,
65.9171

■ 189.7620, 10.9633,
-16.4543

■ 93.3930, -46.0427,
68.0613

■ 197.5700, 15.4950,
-23.3019

■ 204.7910, 20.3160,
-29.6347

■ 211.6870, 21.3533,
-35.6825

Harmonies

Analogous

The Analogous color harmony consists of three colors that are next to each other on the color wheel.



144.1520, -10.4279, 31.4387



142.8000, -16.6634, 24.7314



140.9680, -18.2252, 12.3061

Triad

The Triadic color harmony groups three colors that are evenly spaced from another and form a triangle on the color wheel.



142.8000, -16.6634, 24.7314



134.2190, 4.3290, -35.2721



144.2080, 14.6875, 2.4486

Complementary

The Complementary color scheme is a pair of colors which are on the opposite of each other on the color wheel.



142.8000, -16.6634, 24.7314



137.2000, 16.6634, -24.7314

Split Complementary

Split-complementary colors differ from the complementary color scheme. The scheme consists of three colors, the original color and two neighbors of the complement color.



140.6400, 19.4045, -17.2243



142.8000, -16.6634, 24.7314



133.4060, 14.0968, -41.5751

Square

The Square scheme is like the rectangle color scheme, but the four colors are evenly spaced on the color wheel.



142.8000, -16.6634, 24.7314



136.2610, -6.0447, -21.2769



136.4160, 19.0219, -34.5678



145.3690, 7.2131, 19.8474

Rectangle

The Rectangle color scheme consists of four colors that form a rectangle on the color wheel.



142.8000, -16.6634, 24.7314



139.4720, -16.0087, 1.3401



136.4160, 19.0219, -34.5678



143.3320, 16.5983, -3.7992

Sweetspot

The Sweet Spot groups the original color and five complimentary colors.



142.8000, -16.6634, 24.7314



210.9320, -6.8685, 9.7066



131.6420, 6.5855, 34.5170



105.7080, -3.8000, 5.5181



240.0000, 0.0000, 0.0000



112.0000, 0.0000, 0.0000

Same Dimension

The Same Dimension uses a secret algorithm to generate beautiful new colors.



142.8000, -16.6634, 24.7314



177.3690, -26.3109, 39.1414



160.9970, -25.6345, 8.7726



83.0390, -2.4842, 3.4738



81.8310, -40.3427, 59.7842



12.7470, -6.2843, 8.9919

Inverse Universe

The Inverse Universe completely reimagines the original color for something new.



137.2000, 16.6634, -24.7314



168.6310, 26.3109, -39.1414



119.0030, 25.6345, -8.7726



81.9610, 2.4842, -3.4738



68.1690, 40.3427, -59.7842



10.2530, 6.2843, -8.9919

Previews

White Background



This preview shows how the YUV color 142.8000, -16.6634, 24.7314 looks on a white background.

Color Contrast Check

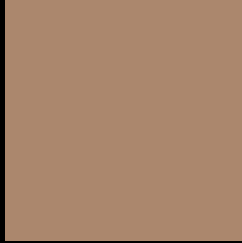
Large Text (above 18pt) WCAG AA ✓ Pass

Any Text WCAG AA × Fail

Large Text (above 18pt) WCAG AAA × Fail

Any Text WCAG AAA × Fail

Black Background



This preview shows how the YUV color 142.8000, -16.6634, 24.7314 looks on a black background.

Color Contrast Check

Large Text (above 18pt) WCAG AA ✓ Pass

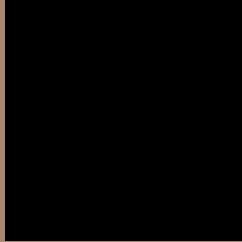
Any Text WCAG AA ✓ Pass

Large Text (above 18pt) WCAG AAA ✓ Pass

Any Text WCAG AAA × Fail

If you want to check with other color combinations, try the [Color Contrast Checker](#).

YUV 142.8000, -16.6634, 24.7314 Background



This preview shows how black text looks on a background with the YUV color 142.8000, -16.6634, 24.7314.



This preview shows how white text looks on a background with the YUV color 142.8000, -16.6634, 24.7314.

24.7314.

Color Blindness Simulation

Color vision deficiency is a very complex topic, and I could not describe the different causes any better than Wikipedia does, so if you want to learn more, you should check out their [article about color blindness](#).

Dichromacy



Original Color

142.8000, -16.6634, 24.7314

Protanopia

141.2710, -14.4306, 8.5323

Deuteranopia

142.7780, -16.6526, 21.2427



Tritanopia

144.9970, -1.9705, 25.4356

Trichromacy



Original Color

142.8000, -16.6634, 24.7314

Protanomaly

141.4890, -15.0311, 14.4801

Deuteranomaly

142.4900, -16.5106, 22.3723

Tritanomaly

143.9170, -7.3541, 25.5058

Monochromacy



Original Color

142.8000, -16.6634, 24.7314

Achromatopsia

143.0000, 0.0000, 0.0000

Achromatomaly

142.8610, -5.8475, 8.8919

CSS Examples

Text

The CSS property to change the color of the text to YUV 142.8000, -16.6634, 24.7314 is called "color". The color property can be set on classes, ids or directly on the HTML element.

This example shows how text in the color `rgb(171, 135, 109)` looks like.

```
.text, #text, p{  
    color:rgb(171, 135, 109)  
}
```

If you want to add a text shadow in that color use the text-shadow property, you can generate a text shadow directly with our [CSS Text Shadow Generator](#).

Here you see how black text with a 4 pixel rgb(171, 135, 109) colored shadow looks like.

```
.shadow{ text-shadow: 4px 4px 2px rgb(171, 135, 109) }
```

Border

The CSS property to change the border of an element to YUV 142.8000, -16.6634, 24.7314 is called "border".

The border property can be set on classes, ids or directly on the HTML element.

This example shows the color as border, it can be applied via the CSS property "border" or "border-color".

```
.border, #border, table{ border:4px solid rgb(171, 135, 109) }
```


If only the border color should be changed use the property `border-color`.

```
.border{ border-color:rgb(171, 135, 109) }
```

If you want to add a box shadow in that color use:

Here you see how a box with a 4 pixel `rgb(171, 135, 109)` colored shadow looks like.

```
.boxshadow{ -moz-box-shadow:4px 4px 4px  
4px rgb(171, 135, 109); -webkit-box-  
shadow:4px 4px 4px 4px rgb(171, 135, 109);  
box-shadow:4px 4px 4px 4px rgb(171, 135,  
109) }
```

Background

The CSS property to change the background color of an element to YUV 142.8000, -16.6634, 24.7314 is called "background". The background property can be set on classes, ids or directly on the HTML element.

```
.background, #background, body{  
background: rgb(171, 135, 109) }
```

If only the background color should be changed can be used:

```
.background{ background-color: rgb(171,  
135, 109) }
```

This example shows the color as background, it is applied via the CSS property "background".

To optimize and compress your CSS code, you can use our [online CSS compressor and optimizer](#) based on csstidy. If you want to create a linear or radial gradient as background or border, check our [CSS Gradient Generator](#).

Hey! You found this booklet interesting? Support Converting Colors with the new Membership Option!

The pro membership hides all ads, plus gives you double the colors in the color bucket, and more awesome pro features!

[Learn more, Memberships starting at \\$2.50/m!](#)

**Follow me
on Twitter!**

@ConvertingColor