

# Converting Colors

YUV(142.8430, -15.2056,  
23.8167)

Have a look what the booklet for  
YUV(142.8430, -15.2056, 23.8167)  
contains.

<b>YUV(142.8430, -15.2056, 23.8167)</b> .....	3
<b><i>Conversions</i></b> .....	4
<b><i>Details</i></b> .....	6
<b><i>Harmonies</i></b> .....	12
<b><i>Previews</i></b> .....	24
<b><i>Color Blindness Simulation</i></b> .....	28
<b><i>CSS Examples</i></b> .....	31

# Color

**YUV(142.8430, -15.2056,  
23.8167)**

# Conversions

## Conversions Part 1

<b>Format</b>	<b>Color</b>
Hex	AA8770
RGB	170, 135, 112
RGB Percent	67%, 53%, 44%
CMY	0.3333, 0.4706, 0.5608
CMYK	0.00, 0.21, 0.34, 0.33
HSL	24°, 25%, 55%
HSV	24°, 34%, 67%
XYZ	28.1662, 27.0438, 19.0647
YIQ	142.8430, 28.2430, 0.2670

# Conversions

## Conversions Part 2

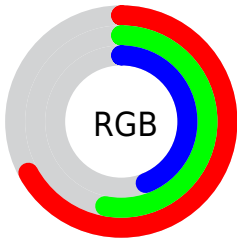
<b>Format</b>	<b>Color</b>
<b>R<sub>YB</sub></b>	170, 150, 112
Decimal	11175792
CIE <sub>Lab</sub>	59.01, 10.01, 17.45
CIE <sub>LCh</sub>	59, 20.115, 60.157
Yxy	27.0438, 0.3792, 0.3641
Android (android.graphics.Color)	4289365872 (0xFFAA8770)
YUV	142.8430, -15.2056, 23.8167
Hunter-Lab	52.0037, 5.6724, 14.6667

# Details

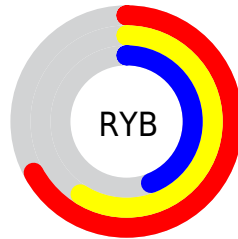
The YUV color **142.8430, -15.2056, 23.8167** is a dark color, and the websafe version is hex **CC9999**. A complement of this color would be **139.1570, 15.2056, -23.8167**, and the grayscale version is **143.0000, 0.0000, 0.0000**.

A 20% lighter version of the original color is **196.6260, -16.0846, 25.7610**, and **92.1740, -13.8898, 21.7724** is the 20% darker color. If you saturate the color by 10%, you get **135.0350, -19.7373, 30.6643**, and if you desaturate by 10%, it is **150.6510, -10.6739, 16.9691**.

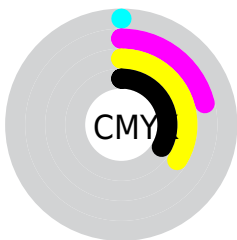
# Distribution



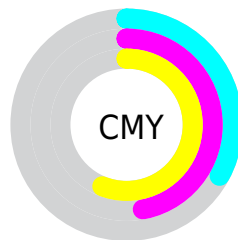
- Red (67%)
- Green (53%)
- Blue (44%)



- Red (67%)
- Yellow (59%)
- Blue (44%)



- Cyan (0%)
- Magenta (21%)
- Yellow (34%)
- Black (33%)



- Cyan (33%)
- Magenta (47%)
- Yellow (56%)

# Brightness & Saturation Gradients

These gradients show how the YUV color 142.8430, -15.2056, 23.8167 changes by changing the brightness by 10 percent. The first figure shows a shift by +10% for each color and the second figure -10%.

Similar to the brightness gradients but the following saturation gradients show a change of the YUV color 142.8430, -15.2056, 23.8167 by changing the saturation by 10% instead.



■ 142.8430,  
-15.2056, 23.8167

■ 142.8430,  
-15.2056, 23.8167

255.0000, 0.0000,  
0.0000

■ 117.2450,  
-14.9108, 22.5871

■ 196.6260,  
-16.0846, 25.7610

■ 92.1740, -13.8898,  
21.7724

■ 224.8110,  
-16.6688, 26.4758

■ 68.3910, -13.0108,  
19.8281

■ 244.4390,  
-12.5414, 9.2620

■ 45.6080, -12.1317,  
17.8838

■ 254.0880, -3.4944,  
0.7998

■ 24.8960, -12.2737,  
16.7542

■ 4.1860, -2.0637,  
8.6069

■ 0.0000, 0.0000,

0.0000

■ 142.8430,  
-15.2056, 23.8167

■ 142.8430,  
-15.2056, 23.8167

■ 135.0350,  
-19.7373, 30.6643

■ 150.6510,  
-10.6739, 16.9691

■ 126.6400,  
-23.9795, 38.0267

■ 159.0460, -6.4317,  
9.6067

■ 118.8320,  
-28.5112, 44.8743

■ 166.8540, -1.9000,  
2.7590

■ 111.0240,  
-33.0428, 51.7220

■ 174.6620, 2.6316,  
-4.0886

■ 103.2160,  
-37.5745, 58.5696

■ 182.4700, 7.1633,  
-10.9362

■ 94.8210, -41.8168,  
65.9320

■ 190.8650, 11.4056,  
-18.2986

■ 90.1590, -44.4484,  
70.0206

■ 198.6730, 15.9372,  
-25.1462

■ 206.4810, 20.4689,  
-31.9938

■ 213.1490, 20.6325,  
-37.8417

# Harmonies

## Analogous

The Analogous color harmony consists of three colors that are next to each other on the color wheel.



144.3690, -9.5489, 29.4944



142.8430, -15.2056, 23.8167



141.3100, -16.9148, 12.0061

# Triad

The Triadic color harmony groups three colors that are evenly spaced from another and form a triangle on the color wheel.



142.8430, -15.2056, 23.8167



134.8990, 3.0078, -31.4834



143.3820, 14.1087, 1.4190

# Complementary

The Complementary color scheme is a pair of colors which are on the opposite of each other on the color wheel.



142.8430, -15.2056, 23.8167



139.1570, 15.2056, -23.8167

# Split Complementary

Split-complementary colors differ from the complementary color scheme. The scheme consists of three colors, the original color and two neighbors of the complement color.



140.8850, 17.8047, -17.4391



142.8430, -15.2056, 23.8167



134.2710, 12.1914, -37.0717

# Square

The Square scheme is like the rectangle color scheme, but the four colors are evenly spaced on the color wheel.



142.8430, -15.2056, 23.8167



136.8700, -6.3449, -18.3030



136.9710, 17.2693, -32.4236



145.0590, 7.3659, 17.4883



# Rectangle

The Rectangle color scheme consists of four colors that form a rectangle on the color wheel.



142.8430, -15.2056, 23.8167



140.2980, -15.4299, 2.3697



136.9710, 17.2693, -32.4236



143.0930, 15.7302, -5.3436

# Sweetspot

The Sweet Spot groups the original color and five complimentary colors.



142.8430, -15.2056, 23.8167



211.2740, -5.5581, 9.4067



133.4460, 7.1751, 32.0579



105.8220, -3.3632, 5.4181



240.0000, 0.0000, 0.0000



112.0000, 0.0000, 0.0000



# Same Dimension

The Same Dimension uses a secret algorithm to generate beautiful new colors.



142.8430, -15.2056, 23.8167



179.3410, -23.8321, 37.4119



159.2790, -23.3085, 9.4023



80.1530, -2.0474, 3.3738



78.8850, -38.8903, 60.6139



10.6760, -5.2633, 8.1771



# Inverse Universe

The Inverse Universe completely reimagines the original color for something new.



139.1570, 15.2056, -23.8167



173.6590, 23.8321, -37.4119



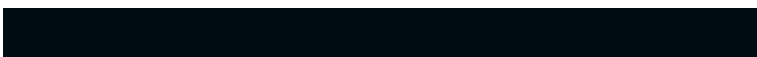
122.7210, 23.3085, -9.4023



79.8470, 2.0474, -3.3738



69.1150, 38.8903, -60.6139

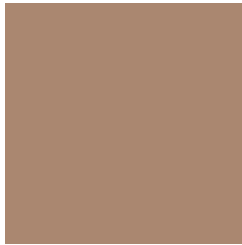


9.3240, 5.2633, -8.1771



# Previews

## White Background



This preview shows how the YUV color 142.8430, -15.2056, 23.8167 looks on a white background.

## Color Contrast Check

Large Text (above 18pt) WCAG AA ✓ Pass

Any Text WCAG AA × Fail

Large Text (above 18pt) WCAG AAA × Fail

Any Text WCAG AAA × Fail



# Black Background



This preview shows how the YUV color 142.8430, -15.2056, 23.8167 looks on a black background.

## Color Contrast Check

Large Text (above 18pt) WCAG AA ✓ Pass

Any Text WCAG AA ✓ Pass

Large Text (above 18pt) WCAG AAA ✓ Pass

Any Text WCAG AAA × Fail

If you want to check with other color combinations, try the [Color Contrast Checker](#).

# YUV 142.8430, -15.2056, 23.8167

## Background



This preview shows how black text looks on a background with the YUV color 142.8430, -15.2056, 23.8167.



This preview shows how white text looks on a background with the YUV color 142.8430, -15.2056, 23.8167.



# Color Blindness Simulation

Color vision deficiency is a very complex topic, and I could not describe the different causes any better than Wikipedia does, so if you want to learn more, you should check out their [article about color blindness](#).

## Dichromacy



### Original Color

142.8430, -15.2056, 23.8167

### Protanopia

141.6130, -13.1202, 8.2324

### Deuteranopia

142.8210, -15.1948, 20.3280



## Tritanopia

144.6980, -1.8231, 24.8209

# Trichromacy



## Original Color

142.8430, -15.2056, 23.8167

## Protanomaly

141.8310, -13.7207, 14.1802

## Deuteranomaly

142.5330, -15.0528, 21.4576

## Tritanomaly

143.7320, -6.7699, 24.7910

# Monochromacy



## Original Color

142.8430, -15.2056, 23.8167

## Achromatopsia

143.0000, 0.0000, 0.0000

## Achromatomaly

142.9750, -5.4107, 8.7919

# CSS Examples

## Text

The CSS property to change the color of the text to YUV 142.8430, -15.2056, 23.8167 is called "color". The color property can be set on classes, ids or directly on the HTML element.

This example shows how text in the color `rgb(170, 135, 112)` looks like.

```
.text, #text, p{  
    color:rgb(170, 135, 112)  
}
```

If you want to add a text shadow in that color use the text-shadow property, you can generate a text shadow directly with our [CSS Text Shadow Generator](#).

Here you see how black text with a 4 pixel rgb(170, 135, 112) colored shadow looks like.

```
.shadow{ text-shadow: 4px 4px 2px rgb(170, 135, 112) }
```

## Border

The CSS property to change the border of an element to YUV 142.8430, -15.2056, 23.8167 is called "border".

The border property can be set on classes, ids or directly on the HTML element.

This example shows the color as border, it can be applied via the CSS property "border" or "border-color".

```
.border, #border, table{ border:4px solid rgb(170, 135, 112) }
```



If only the border color should be changed use the property `border-color`.

```
.border{ border-color:rgb(170, 135, 112) }
```

If you want to add a box shadow in that color use:

Here you see how a box with a 4 pixel `rgb(170, 135, 112)` colored shadow looks like.

```
.boxshadow{ -moz-box-shadow:4px 4px 4px  
4px rgb(170, 135, 112); -webkit-box-  
shadow:4px 4px 4px 4px rgb(170, 135, 112);  
box-shadow:4px 4px 4px 4px rgb(170, 135,  
112) }
```

# Background

The CSS property to change the background color of an element to YUV 142.8430, -15.2056, 23.8167 is called "background". The background property can be set on classes, ids or directly on the HTML element.

```
.background, #background, body{  
background: rgb(170, 135, 112) }
```

If only the background color should be changed can be used:

```
.background{ background-color: rgb(170,  
135, 112) }
```

This example shows the color as background, it is applied via the CSS property "background".

To optimize and compress your CSS code, you can use our [online CSS compressor and optimizer](#) based on csstidy. If you want to create a linear or radial gradient as background or border, check our [CSS Gradient Generator](#).

Hey! You found this booklet interesting? Support Converting Colors with the new Membership Option!

The pro membership hides all ads, plus gives you double the colors in the color bucket, and more awesome pro features!

**[Learn more, Memberships starting at \\$2.50/m!](#)**

**Follow me  
on Twitter!**

@ConvertingColor