

Converting Colors

YUV(143.0460, -19.7427,
32.4087)

Have a look what the booklet for
YUV(143.0460, -19.7427, 32.4087)
contains.

YUV(143.0460, -19.7427, 32.4087)	3
<i>Conversions</i>	4
<i>Details</i>	6
<i>Harmonies</i>	12
<i>Previews</i>	24
<i>Color Blindness Simulation</i>	28
<i>CSS Examples</i>	31

Color

**YUV(143.0460, -19.7427,
32.4087)**

Conversions

Conversions Part 1

Format	Color
Hex	B48467
RGB	180, 132, 103
RGB Percent	71%, 52%, 40%
CMY	0.2941, 0.4824, 0.5961
CMYK	0.00, 0.27, 0.43, 0.29
HSL	23°, 34%, 55%
HSV	23°, 43%, 71%
XYZ	29.5218, 27.1851, 16.5232
YIQ	143.0460, 37.9170, 1.1570

Conversions

Conversions Part 2

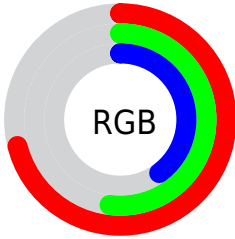
Format	Color
R _Y B	180, 150, 103
Decimal	11830375
CIE Lab	59.15, 14.71, 22.88
CIE LCh	59, 27.204, 57.262
Yxy	27.1851, 0.4031, 0.3712
Android (android.graphics.Color)	4290020455 (0xFFB48467)
YUV	143.0460, -19.7427, 32.4087
Hunter-Lab	52.1393, 9.8247, 17.7082

Details

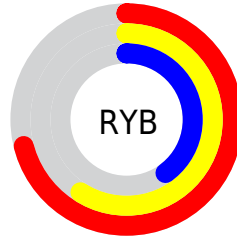
The YUV color $143.0460, -19.7427, 32.4087$ is a dark color, and the websafe version is hex $CC9966$. A complement of this color would be $139.9540, 19.7427, -32.4087$, and the grayscale version is $143.0000, 0.0000, 0.0000$.

A 20% lighter version of the original color is $197.0140, -21.2059, 35.0677$, and $91.8930, -17.6952, 29.0348$ is the 20% darker color. If you saturate the color by 10%, you get $134.5370, -24.4217, 39.8711$, and if you desaturate by 10%, it is $151.5550, -15.0636, 24.9463$.

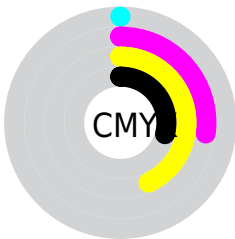
Distribution



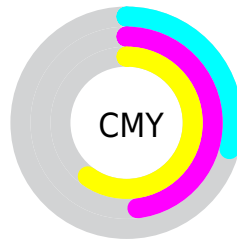
- Red (71%)
- Green (52%)
- Blue (40%)



- Red (71%)
- Yellow (59%)
- Blue (40%)



- Cyan (0%)
- Magenta (27%)
- Yellow (43%)
- Black (29%)



- Cyan (29%)
- Magenta (48%)
- Yellow (60%)

Brightness & Saturation Gradients

These gradients show how the YUV color 143.0460, -19.7427, 32.4087 changes by changing the brightness by 10 percent. The first figure shows a shift by +10% for each color and the second figure -10%.

Similar to the brightness gradients but the following saturation gradients show a change of the YUV color 143.0460, -19.7427, 32.4087 by changing the saturation by 10% instead.

■ 143.0460,
-19.7427, 32.4087

■ 143.0460,
-19.7427, 32.4087

■ 255.0000, 0.0000,
0.0000

■ 117.2630,
-18.8637, 30.4643

■ 197.0140,
-21.2059, 35.0677

■ 91.8930, -17.6952,
29.0348

■ 221.9100,
-20.1686, 29.0199

■ 68.1100, -16.8162,
27.0905

■ 241.5380,
-16.0412, 11.8062

■ 44.9140, -16.2266,
24.6314

■ 252.9480, -7.8624,
1.7996

■ 24.0430, -11.8532,
21.8873

■ 6.8770, -3.3904,
14.1399

■ 0.0000, 0.0000,

0.0000

■ 143.0460,
-19.7427, 32.4087

■ 143.0460,
-19.7427, 32.4087

■ 134.5370,
-24.4217, 39.8711

■ 151.5550,
-15.0636, 24.9463

■ 126.0280,
-29.1008, 47.3334

■ 160.0640,
-10.3846, 17.4839

■ 116.9320,
-33.4905, 55.3106

■ 169.1600, -5.9949,
9.5067

■ 108.4230,
-38.1695, 62.7730

■ 177.6690, -1.3158,
2.0443

■ 99.9140, -42.8486,
70.2354

■ 186.1780, 3.3632,
-5.4181

■ 93.7360, -46.2118,
75.6535

■ 194.6870, 8.0423,
-12.8805

■ 203.7830, 12.4320,
-20.8577

■ 212.2920, 17.1110,
-28.3201

■ 219.6610, 17.4221,
-34.7827

Harmonies

Analogous

The Analogous color harmony consists of three colors that are next to each other on the color wheel.



144.6800, -11.1812, 39.7456



143.0460, -19.7427, 32.4087



141.1490, -22.7515, 17.4093

Triad

The Triadic color harmony groups three colors that are evenly spaced from another and form a triangle on the color wheel.



143.0460, -19.7427, 32.4087



131.0500, 3.9194, -43.8938



144.2660, 20.0819, -1.1103

Complementary

The Complementary color scheme is a pair of colors which are on the opposite of each other on the color wheel.



143.0460, -19.7427, 32.4087



139.9540, 19.7427, -32.4087

Split Complementary

Split-complementary colors differ from the complementary color scheme. The scheme consists of three colors, the original color and two neighbors of the complement color.



138.7680, 25.2574, -27.8605



143.0460, -19.7427, 32.4087



128.7030, 16.9084, -56.7445

Square

The Square scheme is like the rectangle color scheme, but the four colors are evenly spaced on the color wheel.



143.0460, -19.7427, 32.4087



135.3270, -9.5282, -23.9658



132.3970, 24.4543, -50.3372



146.1180, 11.2808, 21.8215

Rectangle

The Rectangle color scheme consists of four colors that form a rectangle on the color wheel.



143.0460, -19.7427, 32.4087



139.4140, -21.4031, 4.8989



132.3970, 24.4543, -50.3372



142.7810, 22.2930, -10.3319

Sweetspot

The Sweet Spot groups the original color and five complimentary colors.



143.0460, -19.7427, 32.4087



220.3130, -8.0423, 12.8805



131.6090, 10.0528, 42.4389



108.4910, -4.6791, 7.4624



245.0000, 0.0000, 0.0000



117.0000, 0.0000, 0.0000

Same Dimension

The Same Dimension uses a secret algorithm to generate beautiful new colors.



143.0460, -19.7427, 32.4087



177.2950, -30.7114, 50.6073



165.3520, -30.7395, 12.8463



85.0390, -2.4842, 3.4738



79.7930, -39.3379, 64.2025



13.6440, -6.7265, 10.8362

Inverse Universe

The Inverse Universe completely reimagines the original color for something new.



139.9540, 19.7427, -32.4087



172.7050, 30.7114, -50.6073



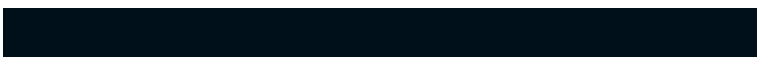
117.6480, 30.7395, -12.8463



84.5480, 2.1948, -3.9886



73.2070, 39.3379, -64.2025



12.3560, 6.7265, -10.8362

Previews

White Background



This preview shows how the YUV color 143.0460, -19.7427, 32.4087 looks on a white background.

Color Contrast Check

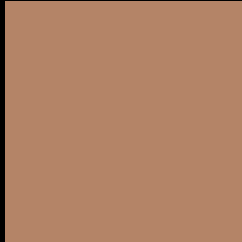
Large Text (above 18pt) WCAG AA ✓ Pass

Any Text WCAG AA × Fail

Large Text (above 18pt) WCAG AAA × Fail

Any Text WCAG AAA × Fail

Black Background



This preview shows how the YUV color 143.0460, -19.7427, 32.4087 looks on a black background.

Color Contrast Check

Large Text (above 18pt) WCAG AA ✓ Pass

Any Text WCAG AA ✓ Pass

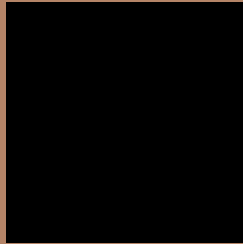
Large Text (above 18pt) WCAG AAA ✓ Pass

Any Text WCAG AAA × Fail

If you want to check with other color combinations, try the [Color Contrast Checker](#).

YUV 143.0460, -19.7427, 32.4087

Background



This preview shows how black text looks on a background with the YUV color 143.0460, -19.7427, 32.4087.



This preview shows how white text looks on a background with the YUV color 143.0460, -19.7427, 32.4087.

Color Blindness Simulation

Color vision deficiency is a very complex topic, and I could not describe the different causes any better than Wikipedia does, so if you want to learn more, you should check out their [article about color blindness](#).

Dichromacy



Original Color

143.0460, -19.7427, 32.4087

Protanopia

141.4130, -16.4726, 10.1618

Deuteranopia

142.5780, -20.0050, 23.1721



Tritanopia

144.8840, -3.8868, 33.4277

Trichromacy



Original Color

143.0460, -19.7427, 32.4087

Protanomaly

141.8270, -17.6627, 18.5687

Deuteranomaly

142.6000, -20.0158, 26.6608

Tritanomaly

144.3910, -9.5598, 32.9831

Monochromacy



Original Color

143.0460, -19.7427, 32.4087

Achromatopsia

143.0000, 0.0000, 0.0000

Achromatomaly

142.8290, -7.3107, 11.5510

CSS Examples

Text

The CSS property to change the color of the text to YUV 143.0460, -19.7427, 32.4087 is called "color". The color property can be set on classes, ids or directly on the HTML element.

This example shows how text in the color `rgb(180, 132, 103)` looks like.

```
.text, #text, p{  
    color:rgb(180, 132, 103)  
}
```

If you want to add a text shadow in that color use the text-shadow property, you can generate a text shadow directly with our [CSS Text Shadow Generator](#).

Here you see how black text with a 4 pixel rgb(180, 132, 103) colored shadow looks like.

```
.shadow{ text-shadow: 4px 4px 2px rgb(180, 132, 103) }
```

Border

The CSS property to change the border of an element to YUV 143.0460, -19.7427, 32.4087 is called "border".

The border property can be set on classes, ids or directly on the HTML element.

This example shows the color as border, it can be applied via the CSS property "border" or "border-color".

```
.border, #border, table{ border:4px solid rgb(180, 132, 103) }
```


If only the border color should be changed use the property `border-color`.

```
.border{ border-color:rgb(180, 132, 103) }
```

If you want to add a box shadow in that color use:

Here you see how a box with a 4 pixel `rgb(180, 132, 103)` colored shadow looks like.

```
.boxshadow{ -moz-box-shadow:4px 4px 4px  
4px rgb(180, 132, 103); -webkit-box-  
shadow:4px 4px 4px 4px rgb(180, 132, 103);  
box-shadow:4px 4px 4px 4px rgb(180, 132,  
103) }
```

Background

The CSS property to change the background color of an element to YUV 143.0460, -19.7427, 32.4087 is called "background". The background property can be set on classes, ids or directly on the HTML element.

```
.background, #background, body{  
background: rgb(180, 132, 103) }
```

If only the background color should be changed can be used:

```
.background{ background-color: rgb(180,  
132, 103) }
```

This example shows the color as background, it is applied via the CSS property "background".

To optimize and compress your CSS code, you can use our [online CSS compressor and optimizer](#) based on csstidy. If you want to create a linear or radial gradient as background or border, check our [CSS Gradient Generator](#).

Hey! You found this booklet interesting? Support Converting Colors with the new Membership Option!

The pro membership hides all ads, plus gives you double the colors in the color bucket, and more awesome pro features!

[Learn more, Memberships starting at \\$2.50/m!](#)

**Follow me
on Twitter!**

@ConvertingColor