

Converting Colors

YUV(143.1800, -16.3577,
20.0131)

Have a look what the booklet for
YUV(143.1800, -16.3577, 20.0131)
contains.

YUV(143.1800, -16.3577, 20.0131)	3
<i>Conversions</i>	4
<i>Details</i>	6
<i>Harmonies</i>	12
<i>Previews</i>	24
<i>Color Blindness Simulation</i>	28
<i>CSS Examples</i>	31

Color

**YUV(143.1800, -16.3577,
20.0131)**

Conversions

Conversions Part 1

Format	Color
Hex	A68A6E
RGB	166, 138, 110
RGB Percent	65%, 54%, 43%
CMY	0.3490, 0.4588, 0.5686
CMYK	0.00, 0.17, 0.34, 0.35
HSL	30°, 24%, 54%
HSV	30°, 34%, 65%
XYZ	27.6288, 27.4097, 18.5863
YIQ	143.1800, 25.6760, -2.7720

Conversions

Conversions Part 2

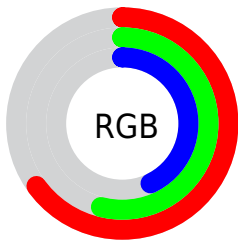
Format	Color
R_{YB}	166, 166, 110
Decimal	10914414
CIE _{Lab}	59.35, 6.42, 18.97
CIE _{LCh}	59, 20.030, 71.293
Yxy	27.4097, 0.3753, 0.3723
Android (android.graphics.Color)	4289104494 (0xFFA68A6E)
YUV	143.1800, -16.3577, 20.0131
Hunter-Lab	52.3543, 2.5794, 15.5995

Details

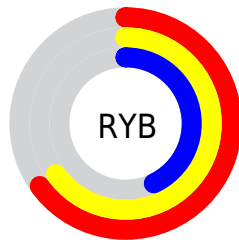
The YUV color $143.1800, -16.3577, 20.0131$ is a dark color, and the websafe version is hex 999966 . A complement of this color would be $132.8200, 16.3577, -20.0131$, and the grayscale version is $143.0000, 0.0000, 0.0000$.

A 20% lighter version of the original color is $196.9630, -17.2368, 21.9574$, and $92.5110, -15.0419, 17.9689$ is the 20% darker color. If you saturate the color by 10%, you get $136.5460, -21.4682, 25.8312$, and if you desaturate by 10%, it is $149.8140, -11.2473, 14.1951$.

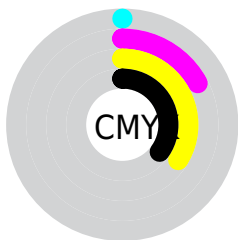
Distribution



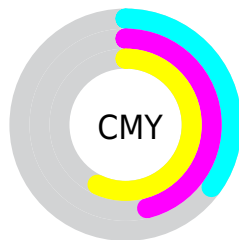
- Red (65%)
- Green (54%)
- Blue (43%)



- Red (65%)
- Yellow (65%)
- Blue (43%)



- Cyan (0%)
- Magenta (17%)
- Yellow (34%)
- Black (35%)



- Cyan (35%)
- Magenta (46%)
- Yellow (57%)

Brightness & Saturation Gradients

These gradients show how the YUV color 143.1800, -16.3577, 20.0131 changes by changing the brightness by 10 percent. The first figure shows a shift by +10% for each color and the second figure -10%.

Similar to the brightness gradients but the following saturation gradients show a change of the YUV color 143.1800, -16.3577, 20.0131 by changing the saturation by 10% instead.

■ 143.1800,
-16.3577, 20.0131

■ 143.1800,
-16.3577, 20.0131

■ 255.0000, 0.0000,
0.0000

■ 117.6960,
-15.6261, 18.6836

■ 196.9630,
-17.2368, 21.9574

■ 92.5110, -15.0419,
17.9689

■ 225.1480,
-17.8210, 22.6722

■ 69.0270, -14.3103,
16.6393

■ 246.5590,
-14.5726, 7.4028

■ 46.2440, -13.4313,
14.6950

■ 253.8600, -4.3680,
0.9998

■ 25.1730, -12.4103,
13.8803

■ 2.6910, -1.3267,
5.5330

■ 0.0000, 0.0000,

0.0000

■ 143.1800,
-16.3577, 20.0131

■ 143.1800,
-16.3577, 20.0131

■ 136.5460,
-21.4682, 25.8312

■ 149.8140,
-11.2473, 14.1951

■ 129.4390,
-25.8524, 32.0640

■ 156.9210, -6.8631,
7.9623

■ 122.8050,
-30.9629, 37.8820

■ 163.5550, -1.7526,
2.1443

■ 116.2850,
-35.6365, 43.6001

■ 170.0750, 2.9210,
-3.5738

■ 109.0640,
-40.4576, 49.9329

■ 176.7090, 8.0315,
-9.3918

■ 102.4300,
-45.5680, 55.7509

■ 183.9300, 12.8525,
-15.7246

■ 98.3550, -48.4890,
59.3247

■ 190.4500, 17.5262,
-21.4426

■ 197.0840, 22.6366,
-27.2607

■ 203.7350, 25.2736,
-33.0936

Harmonies

Analogous

The Analogous color harmony consists of three colors that are next to each other on the color wheel.



144.6740, -12.1643, 28.3499



143.1800, -16.3577, 20.0131



141.3910, -16.4618, 6.6731

Triad

The Triadic color harmony groups three colors that are evenly spaced from another and form a triangle on the color wheel.



143.1800, -16.3577, 20.0131



135.5010, 6.6550, -34.6424



145.1440, 11.7610, 7.7667

Complementary

The Complementary color scheme is a pair of colors which are on the opposite of each other on the color wheel.



143.1800, -16.3577, 20.0131



132.8200, 16.3577, -20.0131

Split Complementary

Split-complementary colors differ from the complementary color scheme. The scheme consists of three colors, the original color and two neighbors of the complement color.



142.7010, 16.9094, -10.2618



143.1800, -16.3577, 20.0131



136.1400, 14.2280, -36.9568

Square

The Square scheme is like the rectangle color scheme, but the four colors are evenly spaced on the color wheel.



143.1800, -16.3577, 20.0131



137.0480, -2.9817, -23.7211



139.2320, 18.1266, -27.3905



146.2830, 4.2975, 21.6768

Rectangle

The Rectangle color scheme consists of four colors that form a rectangle on the color wheel.



143.1800, -16.3577, 20.0131



139.8350, -13.2297, -3.3633



139.2320, 18.1266, -27.3905



144.6810, 13.9613, 2.0338

Sweetspot

The Sweet Spot groups the original color and five complimentary colors.



143.1800, -16.3577, 20.0131



208.0350, -6.4263, 7.8623



129.9360, 3.9756, 31.6281



104.2950, -4.0894, 5.0033



237.0000, 0.0000, 0.0000



110.0000, 0.0000, 0.0000

Same Dimension

The Same Dimension uses a secret algorithm to generate beautiful new colors.



143.1800, -16.3577, 20.0131



181.2540, -25.2682, 31.3492



159.0290, -24.1713, 6.1136



80.7400, -2.3368, 2.8590



87.6900, -43.2312, 52.8919



11.8500, -5.8420, 7.1476

Inverse Universe

The Inverse Universe completely reimagines the original color for something new.



132.8200, 16.3577, -20.0131



165.1590, 25.5576, -30.8344



116.9710, 24.1713, -6.1136



79.2600, 2.3368, -2.8590



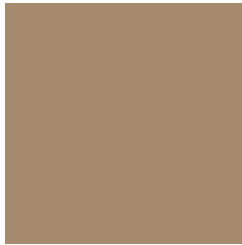
60.3100, 43.2312, -52.8919



8.1500, 5.8421, -7.1475

Previews

White Background



This preview shows how the YUV color 143.1800, -16.3577, 20.0131 looks on a white background.

Color Contrast Check

Large Text (above 18pt) WCAG AA ✓ Pass

Any Text WCAG AA × Fail

Large Text (above 18pt) WCAG AAA × Fail

Any Text WCAG AAA × Fail

Black Background



This preview shows how the YUV color 143.1800, -16.3577, 20.0131 looks on a black background.

Color Contrast Check

Large Text (above 18pt) WCAG AA ✓ Pass

Any Text WCAG AA ✓ Pass

Large Text (above 18pt) WCAG AAA ✓ Pass

Any Text WCAG AAA × Fail

If you want to check with other color combinations, try the [Color Contrast Checker](#).

YUV 143.1800, -16.3577, 20.0131 Background



This preview shows how black text looks on a background with the YUV color 143.1800, -16.3577, 20.0131.



This preview shows how white text looks on a background with the YUV color 143.1800, -16.3577, 20.0131.

Color Blindness Simulation

Color vision deficiency is a very complex topic, and I could not describe the different causes any better than Wikipedia does, so if you want to learn more, you should check out their [article about color blindness](#).

Dichromacy



Original Color

143.1800, -16.3577, 20.0131

Protanopia

142.1570, -14.8674, 8.6323

Deuteranopia

143.1910, -16.3632, 21.7575



Tritanopia

145.3170, -0.6493, 21.6470

Trichromacy



Original Color

143.1800, -16.3577, 20.0131

Protanomaly

142.3640, -15.4625, 12.8358

Deuteranomaly

142.8920, -16.2158, 21.1427

Tritanomaly

144.8240, -6.3222, 21.2024

Monochromacy



Original Color

143.1800, -16.3577, 20.0131

Achromatopsia

143.0000, 0.0000, 0.0000

Achromatomaly

142.8500, -5.8420, 7.1476

CSS Examples

Text

The CSS property to change the color of the text to YUV 143.1800, -16.3577, 20.0131 is called "color". The color property can be set on classes, ids or directly on the HTML element.

This example shows how text in the color `rgb(166, 138, 110)` looks like.

```
.text, #text, p{  
    color:rgb(166, 138, 110)  
}
```

If you want to add a text shadow in that color use the text-shadow property, you can generate a text shadow directly with our [CSS Text Shadow Generator](#).

Here you see how black text with a 4 pixel rgb(166, 138, 110) colored shadow looks like.

```
.shadow{ text-shadow: 4px 4px 2px rgb(166, 138, 110) }
```

Border

The CSS property to change the border of an element to YUV 143.1800, -16.3577, 20.0131 is called "border".

The border property can be set on classes, ids or directly on the HTML element.

This example shows the color as border, it can be applied via the CSS property "border" or "border-color".

```
.border, #border, table{ border:4px solid rgb(166, 138, 110) }
```


If only the border color should be changed use the property `border-color`.

```
.border{ border-color:rgb(166, 138, 110) }
```

If you want to add a box shadow in that color use:

Here you see how a box with a 4 pixel `rgb(166, 138, 110)` colored shadow looks like.

```
.boxshadow{ -moz-box-shadow:4px 4px 4px  
4px rgb(166, 138, 110); -webkit-box-  
shadow:4px 4px 4px 4px rgb(166, 138, 110);  
box-shadow:4px 4px 4px 4px rgb(166, 138,  
110) }
```

Background

The CSS property to change the background color of an element to YUV 143.1800, -16.3577, 20.0131 is called "background". The background property can be set on classes, ids or directly on the HTML element.

```
.background, #background, body{  
background: rgb(166, 138, 110) }
```

If only the background color should be changed can be used:

```
.background{ background-color: rgb(166,  
138, 110) }
```

This example shows the color as background, it is applied via the CSS property "background".

To optimize and compress your CSS code, you can use our [online CSS compressor and optimizer](#) based on csstidy. If you want to create a linear or radial gradient as background or border, check our [CSS Gradient Generator](#).

Hey! You found this booklet interesting? Support Converting Colors with the new Membership Option!

The pro membership hides all ads, plus gives you double the colors in the color bucket, and more awesome pro features!

[Learn more, Memberships starting at \\$2.50/m!](#)

**Follow me
on Twitter!**

@ConvertingColor