

Converting Colors

YUV(143.5220, -15.0473,
19.7132)

Have a look what the booklet for
YUV(143.5220, -15.0473, 19.7132)
contains.

YUV(143.5220, -15.0473, 19.7132)	3
<i>Conversions</i>	4
<i>Details</i>	6
<i>Harmonies</i>	12
<i>Previews</i>	24
<i>Color Blindness Simulation</i>	28
<i>CSS Examples</i>	31

Color

**YUV(143.5220, -15.0473,
19.7132)**

Conversions

Conversions Part 1

Format	Color
Hex	A68A71
RGB	166, 138, 113
RGB Percent	65%, 54%, 44%
CMY	0.3490, 0.4588, 0.5569
CMYK	0.00, 0.17, 0.32, 0.35
HSL	28°, 23%, 55%
HSV	28°, 32%, 65%
XYZ	27.7950, 27.4762, 19.4613
YIQ	143.5220, 24.7130, -1.8390

Conversions

Conversions Part 2

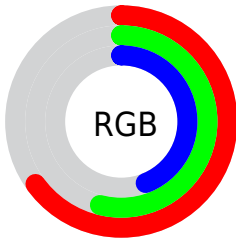
Format	Color
R_{YB}	166, 160, 113
Decimal	10914417
CIE _{Lab}	59.41, 6.82, 17.36
CIE _{LCh}	59, 18.655, 68.541
Yxy	27.4762, 0.3719, 0.3677
Android (android.graphics.Color)	4289104497 (0xFFA68A71)
YUV	143.5220, -15.0473, 19.7132
Hunter-Lab	52.4177, 2.9202, 14.6797

Details

The YUV color **143.5220, -15.0473, 19.7132** is a dark color, and the websafe version is hex **CC9999**. A complement of this color would be **135.4780, 15.0473, -19.7132**, and the grayscale version is **144.0000, 0.0000, 0.0000**.

A 20% lighter version of the original color is **197.3050, -15.9264, 21.6575**, and **92.8530, -13.7315, 17.6689** is the 20% darker color. If you saturate the color by 10%, you get **136.3010, -19.8684, 26.0460**, and if you desaturate by 10%, it is **150.7430, -10.2263, 13.3804**.

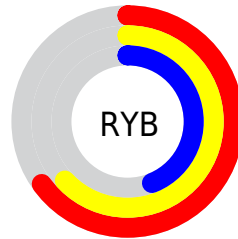
Distribution



Red (65%)

Green (54%)

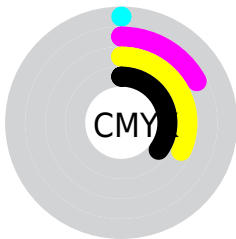
Blue (44%)



Red (65%)

Yellow (63%)

Blue (44%)

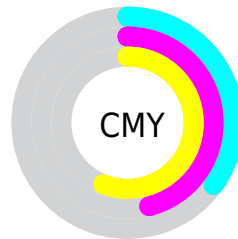


Cyan (0%)

Magenta (17%)

Yellow (32%)

Black (35%)



Cyan (35%)

Magenta (46%)

Yellow (56%)

Brightness & Saturation Gradients

These gradients show how the YUV color 143.5220, -15.0473, 19.7132 changes by changing the brightness by 10 percent. The first figure shows a shift by +10% for each color and the second figure -10%.

Similar to the brightness gradients but the following saturation gradients show a change of the YUV color 143.5220, -15.0473, 19.7132 by changing the saturation by 10% instead.

■ 143.5220,
-15.0473, 19.7132

■ 143.5220,
-15.0473, 19.7132

■ 255.0000, 0.0000,
0.0000

■ 117.9240,
-14.7525, 18.4837

■ 197.3050,
-15.9264, 21.6575

■ 92.8530, -13.7315,
17.6689

■ 225.4900,
-16.5106, 22.3723

■ 69.3690, -12.9999,
16.3394

■ 246.9010,
-13.2622, 7.1028

■ 46.8850, -12.2683,
15.0099

■ 254.3160, -2.6208,
0.5999

■ 25.1730, -12.4103,
13.8803

■ 3.2890, -1.6215,
6.7625

■ 0.0000, 0.0000,

0.0000

■ 143.5220,
-15.0473, 19.7132

■ 143.5220,
-15.0473, 19.7132

■ 136.3010,
-19.8684, 26.0460

■ 150.7430,
-10.2263, 13.3804

■ 129.1940,
-24.2526, 32.2789

■ 157.8500, -5.8420,
7.1476

■ 122.5600,
-29.3631, 38.0969

■ 164.4840, -0.7316,
1.3295

■ 115.4530,
-33.7473, 44.3297

■ 171.5910, 3.6526,
-4.9033

■ 108.2320,
-38.5684, 50.6625

■ 178.8120, 8.4737,
-11.2361

■ 101.0110,
-43.3894, 56.9954

■ 186.0330, 13.2947,
-17.5689

■ 95.4200, -47.0421,
61.8987

■ 192.5530, 17.9684,
-23.2870

■ 199.7740, 22.7894,
-29.6198

■ 206.0830, 24.1161,
-35.1528

Harmonies

Analogous

The Analogous color harmony consists of three colors that are next to each other on the color wheel.



144.4180, -10.5591, 26.8204



143.5220, -15.0473, 19.7132



141.7440, -15.1568, 8.1175

Triad

The Triadic color harmony groups three colors that are evenly spaced from another and form a triangle on the color wheel.



143.5220, -15.0473, 19.7132



136.7680, 5.0444, -31.3685



145.1330, 11.7664, 6.0224

Complementary

The Complementary color scheme is a pair of colors which are on the opposite of each other on the color wheel.



143.5220, -15.0473, 19.7132



135.4780, 15.0473, -19.7132

Split Complementary

Split-complementary colors differ from the complementary color scheme. The scheme consists of three colors, the original color and two neighbors of the complement color.



142.7610, 15.8938, -11.1914



143.5220, -15.0473, 19.7132



136.5210, 13.0541, -33.7829

Square

The Square scheme is like the rectangle color scheme, but the four colors are evenly spaced on the color wheel.



143.5220, -15.0473, 19.7132



137.6570, -3.2819, -20.7472



139.4880, 16.5214, -25.8610



145.9730, 4.4503, 19.3177

Rectangle

The Rectangle color scheme consists of four colors that form a rectangle on the color wheel.



143.5220, -15.0473, 19.7132



140.8460, -13.2351, -1.6189



139.4880, 16.5214, -25.8610



144.5560, 13.5299, 0.3894

Sweetspot

The Sweet Spot groups the original color and five complimentary colors.



143.5220, -15.0473, 19.7132



207.4480, -6.1369, 8.3771



132.0390, 4.4178, 29.7838



104.2950, -4.0894, 5.0033



237.0000, 0.0000, 0.0000



110.0000, 0.0000, 0.0000

Same Dimension

The Same Dimension uses a secret algorithm to generate beautiful new colors.



143.5220, -15.0473, 19.7132



181.7100, -23.5210, 30.9493



158.7840, -22.5715, 6.3284



80.7400, -2.3368, 2.8590



85.3420, -42.0736, 54.9511



11.8500, -5.8420, 7.1476

Inverse Universe

The Inverse Universe completely reimagines the original color for something new.



135.4780, 15.0473, -19.7132



169.2900, 23.5210, -30.9493



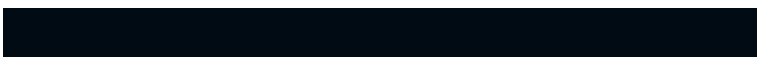
120.2160, 22.5715, -6.3284



79.2600, 2.3368, -2.8590



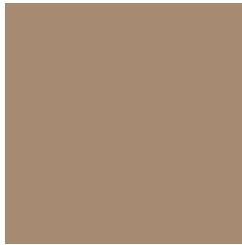
62.6580, 42.0736, -54.9511



8.7370, 5.5527, -7.6623

Previews

White Background



This preview shows how the YUV color 143.5220, -15.0473, 19.7132 looks on a white background.

Color Contrast Check

Large Text (above 18pt) WCAG AA ✓ Pass

Any Text WCAG AA × Fail

Large Text (above 18pt) WCAG AAA × Fail

Any Text WCAG AAA × Fail

Black Background



This preview shows how the YUV color 143.5220, -15.0473, 19.7132 looks on a black background.

Color Contrast Check

Large Text (above 18pt) WCAG AA ✓ Pass

Any Text WCAG AA ✓ Pass

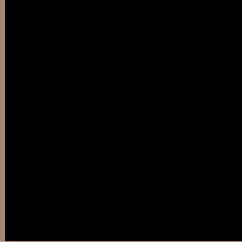
Large Text (above 18pt) WCAG AAA ✓ Pass

Any Text WCAG AAA × Fail

If you want to check with other color combinations, try the [Color Contrast Checker](#).

YUV 143.5220, -15.0473, 19.7132

Background



This preview shows how black text looks on a background with the YUV color 143.5220, -15.0473, 19.7132.



This preview shows how white text looks on a background with the YUV color 143.5220, -15.0473, 19.7132.

Color Blindness Simulation

Color vision deficiency is a very complex topic, and I could not describe the different causes any better than Wikipedia does, so if you want to learn more, you should check out their [article about color blindness](#).

Dichromacy



Original Color

143.5220, -15.0473, 19.7132

Protanopia

142.4990, -13.5570, 8.3324

Deuteranopia

143.2340, -14.9054, 20.8428



Tritanopia

145.6050, -0.7913, 20.5174

Trichromacy



Original Color

143.5220, -15.0473, 19.7132

Protanomaly

142.7060, -14.1521, 12.5358

Deuteranomaly

143.2340, -14.9054, 20.8428

Tritanomaly

144.6390, -5.7380, 20.4876

Monochromacy



Original Color

143.5220, -15.0473, 19.7132

Achromatopsia

144.0000, 0.0000, 0.0000

Achromatomaly

143.9640, -5.4053, 7.0476

CSS Examples

Text

The CSS property to change the color of the text to YUV 143.5220, -15.0473, 19.7132 is called "color". The color property can be set on classes, ids or directly on the HTML element.

This example shows how text in the color `rgb(166, 138, 113)` looks like.

```
.text, #text, p{  
    color:rgb(166, 138, 113)  
}
```

If you want to add a text shadow in that color use the text-shadow property, you can generate a text shadow directly with our [CSS Text Shadow Generator](#).

Here you see how black text with a 4 pixel rgb(166, 138, 113) colored shadow looks like.

```
.shadow{ text-shadow: 4px 4px 2px rgb(166, 138, 113) }
```

Border

The CSS property to change the border of an element to YUV 143.5220, -15.0473, 19.7132 is called "border".

The border property can be set on classes, ids or directly on the HTML element.

This example shows the color as border, it can be applied via the CSS property "border" or "border-color".

```
.border, #border, table{ border:4px solid rgb(166, 138, 113) }
```


If only the border color should be changed use the property `border-color`.

```
.border{ border-color:rgb(166, 138, 113) }
```

If you want to add a box shadow in that color use:

Here you see how a box with a 4 pixel `rgb(166, 138, 113)` colored shadow looks like.

```
.boxshadow{ -moz-box-shadow:4px 4px 4px  
4px rgb(166, 138, 113); -webkit-box-  
shadow:4px 4px 4px 4px rgb(166, 138, 113);  
box-shadow:4px 4px 4px 4px rgb(166, 138,  
113) }
```

Background

The CSS property to change the background color of an element to YUV 143.5220, -15.0473, 19.7132 is called "background". The background property can be set on classes, ids or directly on the HTML element.

```
.background, #background, body{  
background: rgb(166, 138, 113) }
```

If only the background color should be changed can be used:

```
.background{ background-color: rgb(166,  
138, 113) }
```

This example shows the color as background, it is applied via the CSS property "background".

To optimize and compress your CSS code, you can use our [online CSS compressor and optimizer](#) based on csstidy. If you want to create a linear or radial gradient as background or border, check our [CSS Gradient Generator](#).

Hey! You found this booklet interesting? Support Converting Colors with the new Membership Option!

The pro membership hides all ads, plus gives you double the colors in the color bucket, and more awesome pro features!

[Learn more, Memberships starting at \\$2.50/m!](#)

**Follow me
on Twitter!**

@ConvertingColor