

Converting Colors

YUV(143.5330, -11.6018,
34.6126)

Have a look what the booklet for
YUV(143.5330, -11.6018, 34.6126)
contains.

YUV(143.5330, -11.6018, 34.6126)	3
<i>Conversions</i>	4
<i>Details</i>	6
<i>Harmonies</i>	12
<i>Previews</i>	24
<i>Color Blindness Simulation</i>	28
<i>CSS Examples</i>	31

Color

**YUV(143.5330, -11.6018,
34.6126)**

Conversions

Conversions Part 1

Format	Color
Hex	B78078
RGB	183, 128, 120
RGB Percent	72%, 50%, 47%
CMY	0.2824, 0.4980, 0.5294
CMYK	0.00, 0.30, 0.34, 0.28
HSL	8°, 30%, 59%
HSV	8°, 34%, 72%
XYZ	30.6378, 26.8617, 21.3393
YIQ	143.5330, 35.3480, 9.1720

Conversions

Conversions Part 2

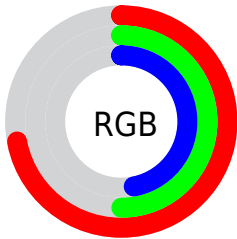
Format	Color
R_{YB}	183, 129, 120
Decimal	12025976
CIE _{Lab}	58.85, 20.22, 12.87
CIE _{LCh}	59, 23.966, 32.487
Yxy	26.8617, 0.3886, 0.3407
Android (android.graphics.Color)	4290216056 (0xFFB78078)
YUV	143.5330, -11.6018, 34.6126
Hunter-Lab	51.8283, 14.8191, 11.8682

Details

The YUV color **143.5330, -11.6018, 34.6126** is a dark color, and the websafe version is hex **CC9999**. A complement of this color would be **159.4670, 11.6018, -34.6126**, and the grayscale version is **144.0000, 0.0000, 0.0000**.

A 20% lighter version of the original color is **197.6150, -12.6282, 37.1716**, and **92.2660, -9.9911, 31.3387** is the 20% darker color. If you saturate the color by 10%, you get **132.0890, -14.8339, 44.6489**, and if you desaturate by 10%, it is **154.9770, -8.3697, 24.5762**.

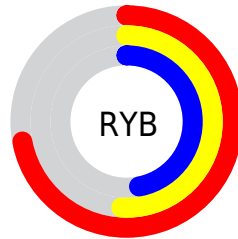
Distribution



Red (72%)

Green (50%)

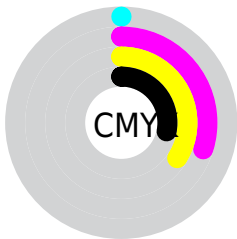
Blue (47%)



Red (72%)

Yellow (51%)

Blue (47%)

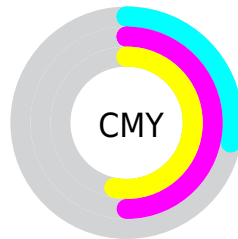


Cyan (0%)

Magenta (30%)

Yellow (34%)

Black (28%)



Cyan (28%)

Magenta (50%)

Yellow (53%)

Brightness & Saturation Gradients

These gradients show how the YUV color 143.5330, -11.6018, 34.6126 changes by changing the brightness by 10 percent. The first figure shows a shift by +10% for each color and the second figure -10%.

Similar to the brightness gradients but the following saturation gradients show a change of the YUV color 143.5330, -11.6018, 34.6126 by changing the saturation by 10% instead.

■ 143.5330,
-11.6018, 34.6126

■ 143.5330,
-11.6018, 34.6126

■ 255.0000, 0.0000,
0.0000

■ 117.6360,
-11.1595, 32.7682

■ 197.6150,
-12.6282, 37.1716

■ 92.2660, -9.9911,
31.3387

■ 221.7280,
-10.7119, 29.1795

■ 68.3690, -9.5489,
29.4944

■ 241.3560, -6.5845,
11.9658

■ 45.2870, -8.5225,
26.9353

■ 22.2330, -9.9749,
26.1057

■ 8.7850, -3.8380,
17.7286

■ 0.0000, 0.0000,

0.0000

■ 143.5330,
-11.6018, 34.6126

■ 143.5330,
-11.6018, 34.6126

■ 132.0890,
-14.8339, 44.6489

■ 154.9770, -8.3697,
24.5762

■ 120.5310,
-18.5028, 54.7853

■ 166.5350, -4.7008,
14.4398

■ 109.0870,
-21.7349, 64.8217

■ 177.9790, -1.4686,
4.4034

■ 97.6430, -24.9670,
74.8581

■ 189.4230, 1.7635,
-5.6330

■ 86.1990, -28.1991,
84.8945

■ 200.9810, 5.4324,
-15.7693

■ 74.6410, -31.8680,
95.0308

■ 212.4250, 8.6645,
-25.8057

■ 68.2180, -33.6315,
100.6638

■ 223.8690, 11.8966,
-35.8421

■ 233.4720, 10.6133,
-44.2639

Harmonies

Analogous

The Analogous color harmony consists of three colors that are next to each other on the color wheel.



144.4540, -1.7028, 32.9278



143.5330, -11.6018, 34.6126



142.3550, -18.4160, 26.8757

Triad

The Triadic color harmony groups three colors that are evenly spaced from another and form a triangle on the color wheel.



143.5330, -11.6018, 34.6126



134.8370, -6.3286, -23.5360



139.7860, 21.3045, -19.9833

Complementary

The Complementary color scheme is a pair of colors which are on the opposite of each other on the color wheel.



143.5330, -11.6018, 34.6126



159.4670, 11.6018, -34.6126

Split Complementary

Split-complementary colors differ from the complementary color scheme. The scheme consists of three colors, the original color and two neighbors of the complement color.



134.6650, 21.3642, -39.1712



143.5330, -11.6018, 34.6126



132.1260, 5.3609, -39.5755

Square

The Square scheme is like the rectangle color scheme, but the four colors are evenly spaced on the color wheel.



143.5330, -11.6018, 34.6126



137.8410, -15.6976, -5.1226



131.4160, 15.5709, -47.7228



143.9630, 16.2872, 2.6634

Rectangle

The Rectangle color scheme consists of four colors that form a rectangle on the color wheel.



143.5330, -11.6018, 34.6126



140.8440, -20.1361, 18.5538



131.4160, 15.5709, -47.7228



137.9700, 22.1998, -27.1607

Sweetspot

The Sweet Spot groups the original color and five complimentary colors.



143.5330, -11.6018, 34.6126



221.9370, -4.4059, 13.2103



145.2210, 15.1740, 33.1322



110.6590, -2.7899, 8.1921



247.0000, 0.0000, 0.0000



120.0000, 0.0000, 0.0000

Same Dimension

The Same Dimension uses a secret algorithm to generate beautiful new colors.



143.5330, -11.6018, 34.6126



176.0470, -17.7712, 53.4558



161.7300, -20.5729, 18.6538



86.2780, -1.6161, 5.0182



58.3840, -28.7833, 85.6092



10.7200, -5.2850, 15.1546

Inverse Universe

The Inverse Universe completely reimagines the original color for something new.



159.4670, 11.6018, -34.6126



200.9530, 17.7712, -53.4558



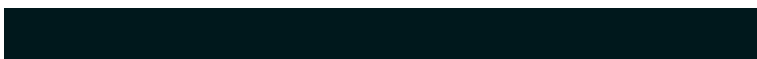
141.2700, 20.5729, -18.6538



88.7220, 1.6161, -5.0182



97.6160, 28.7833, -85.6092



17.2800, 5.2850, -15.1546

Previews

White Background



This preview shows how the YUV color 143.5330, -11.6018, 34.6126 looks on a white background.

Color Contrast Check

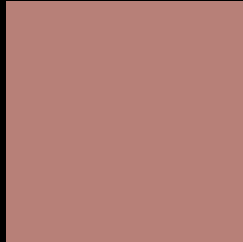
Large Text (above 18pt) WCAG AA ✓ Pass

Any Text WCAG AA × Fail

Large Text (above 18pt) WCAG AAA × Fail

Any Text WCAG AAA × Fail

Black Background



This preview shows how the YUV color 143.5330, -11.6018, 34.6126 looks on a black background.

Color Contrast Check

Large Text (above 18pt) WCAG AA ✓ Pass

Any Text WCAG AA ✓ Pass

Large Text (above 18pt) WCAG AAA ✓ Pass

Any Text WCAG AAA × Fail

If you want to check with other color combinations, try the [Color Contrast Checker](#).

YUV 143.5330, -11.6018, 34.6126

Background



This preview shows how black text looks on a background with the YUV color 143.5330, -11.6018, 34.6126.



This preview shows how white text looks on a background with the YUV color 143.5330, -11.6018,

Color Blindness Simulation

Color vision deficiency is a very complex topic, and I could not describe the different causes any better than Wikipedia does, so if you want to learn more, you should check out their [article about color blindness](#).

Dichromacy



Original Color

143.5330, -11.6018, 34.6126

Protanopia

141.4970, -7.1470, 5.7031

Deuteranopia

142.3200, -11.9898, 19.0134



Tritanopia

144.3680, -4.6184, 34.7573

Trichromacy



Original Color

143.5330, -11.6018, 34.6126

Protanomaly

142.1070, -8.9268, 16.5692

Deuteranomaly

142.7660, -11.7166, 24.7612

Tritanomaly

144.3850, -7.0918, 34.7424

Monochromacy



Original Color

143.5330, -11.6018, 34.6126

Achromatopsia

144.0000, 0.0000, 0.0000

Achromatomaly

143.6380, -4.2585, 12.5955

CSS Examples

Text

The CSS property to change the color of the text to YUV 143.5330, -11.6018, 34.6126 is called "color". The color property can be set on classes, ids or directly on the HTML element.

This example shows how text in the color `rgb(183, 128, 120)` looks like.

```
.text, #text, p{  
    color:rgb(183, 128, 120)  
}
```

If you want to add a text shadow in that color use the text-shadow property, you can generate a text shadow directly with our [CSS Text Shadow Generator](#).

Here you see how black text with a 4 pixel rgb(183, 128, 120) colored shadow looks like.

```
.shadow{ text-shadow: 4px 4px 2px rgb(183, 128, 120) }
```

Border

The CSS property to change the border of an element to YUV 143.5330, -11.6018, 34.6126 is called "border".

The border property can be set on classes, ids or directly on the HTML element.

This example shows the color as border, it can be applied via the CSS property "border" or "border-color".

```
.border, #border, table{ border:4px solid rgb(183, 128, 120) }
```


If only the border color should be changed use the property `border-color`.

```
.border{ border-color:rgb(183, 128, 120) }
```

If you want to add a box shadow in that color use:

Here you see how a box with a 4 pixel `rgb(183, 128, 120)` colored shadow looks like.

```
.boxshadow{ -moz-box-shadow:4px 4px 4px  
4px rgb(183, 128, 120); -webkit-box-  
shadow:4px 4px 4px 4px rgb(183, 128, 120);  
box-shadow:4px 4px 4px 4px rgb(183, 128,  
120) }
```

Background

The CSS property to change the background color of an element to YUV 143.5330, -11.6018, 34.6126 is called "background". The background property can be set on classes, ids or directly on the HTML element.

```
.background, #background, body{  
background: rgb(183, 128, 120) }
```

If only the background color should be changed can be used:

```
.background{ background-color: rgb(183,  
128, 120) }
```

This example shows the color as background, it is applied via the CSS property "background".

To optimize and compress your CSS code, you can use our [online CSS compressor and optimizer](#) based on csstidy. If you want to create a linear or radial gradient as background or border, check our [CSS Gradient Generator](#).

Hey! You found this booklet interesting? Support Converting Colors with the new Membership Option!

The pro membership hides all ads, plus gives you double the colors in the color bucket, and more awesome pro features!

[Learn more, Memberships starting at \\$2.50/m!](#)

**Follow me
on Twitter!**

@ConvertingColor