

Converting Colors

YUV(143.6300, -28.9046,
31.0195)

Have a look what the booklet for
YUV(143.6300, -28.9046, 31.0195)
contains.

YUV(143.6300, -28.9046, 31.0195)	3
<i>Conversions</i>	4
<i>Details</i>	6
<i>Harmonies</i>	12
<i>Previews</i>	24
<i>Color Blindness Simulation</i>	28
<i>CSS Examples</i>	31

Color

**YUV(143.6300, -28.9046,
31.0195)**

Conversions

Conversions Part 1

Format	Color
Hex	B38955
RGB	179, 137, 85
RGB Percent	70%, 54%, 33%
CMY	0.2980, 0.4627, 0.6667
CMYK	0.00, 0.23, 0.53, 0.30
HSL	33°, 38%, 52%
HSV	33°, 53%, 70%
XYZ	29.1758, 28.1309, 12.4864
YIQ	143.6300, 41.7240, -7.2680

Conversions

Conversions Part 2

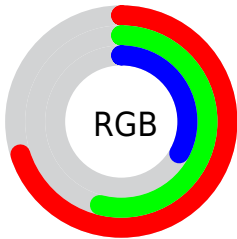
Format	Color
RYB	161, 179, 85
Decimal	11766101
CIELab	60.01, 9.67, 33.88
CIElCh	60, 35.231, 74.069
Yxy	28.1309, 0.4180, 0.4031
Android (android.graphics.Color)	4289956181 (0xFFB38955)
YUV	143.6300, -28.9046, 31.0195
Hunter-Lab	53.0386, 5.3728, 23.1689

Details

The YUV color **143.6300, -28.9046, 31.0195** is a dark color, and the websafe version is hex **CC9966**. A complement of this color would be **120.3700, 28.9046, -31.0195**, and the grayscale version is **144.0000, 0.0000, 0.0000**.

A 20% lighter version of the original color is **197.8970, -30.5152, 34.2933**, and **92.4770, -26.8572, 27.6457** is the 20% darker color. If you saturate the color by 10%, you get **136.8820, -34.4518, 36.9375**, and if you desaturate by 10%, it is **150.3780, -23.3574, 25.1015**.

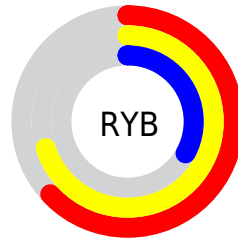
Distribution



Red (70%)

Green (54%)

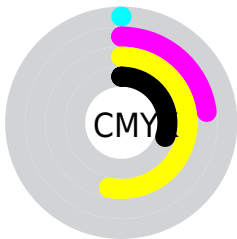
Blue (33%)



Red (63%)

Yellow (70%)

Blue (33%)

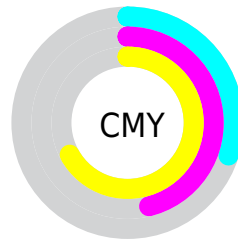


Cyan (0%)

Magenta (23%)

Yellow (53%)

Black (30%)



Cyan (30%)

Magenta (46%)

Yellow (67%)

Brightness & Saturation Gradients

These gradients show how the YUV color 143.6300, -28.9046, 31.0195 changes by changing the brightness by 10 percent. The first figure shows a shift by +10% for each color and the second figure -10%.

Similar to the brightness gradients but the following saturation gradients show a change of the YUV color 143.6300, -28.9046, 31.0195 by changing the saturation by 10% instead.

■ 143.6300,
-28.9046, 31.0195

■ 143.6300,
-28.9046, 31.0195

■ 255.0000, 0.0000,
0.0000

■ 117.8470,
-28.0256, 29.0752

■ 197.8970,
-30.5152, 34.2933

■ 92.4770, -26.8572,
27.6457

■ 222.6790,
-29.9147, 28.3455

■ 68.2810, -26.2675,
25.1866

■ 242.7800,
-26.5135, 10.7169

■ 46.1820, -22.7677,
22.6424

■ 250.6680,
-16.5983, 3.7992

■ 26.6680, -13.1473,
16.9542

■ 253.9740, -3.9312,
0.8998

■ 6.2790, -3.0955,
12.9103

■ 0.0000, 0.0000,

0.0000

■ 143.6300,
-28.9046, 31.0195

■ 143.6300,
-28.9046, 31.0195

■ 136.8820,
-34.4518, 36.9375

■ 150.3780,
-23.3574, 25.1015

■ 130.1340,
-39.9991, 42.8555

■ 157.1260,
-17.8101, 19.1835

■ 123.3860,
-45.5463, 48.7735

■ 163.8740,
-12.2629, 13.2655

■ 116.6380,
-51.0935, 54.6915

■ 170.6220, -6.7156,
7.3475

■ 111.6340,
-55.0356, 59.0800

■ 177.2560, -1.6052,
1.5295

■ 184.0040, 3.9420,
-4.3885

■ 190.7520, 9.4893,
-10.3065

■ 197.5000, 15.0365,
-16.2245

■ 204.2480, 20.5837,
-22.1425

Harmonies

Analogous

The Analogous color harmony consists of three colors that are next to each other on the color wheel.



145.7920, -21.0965, 46.6634



143.6300, -28.9046, 31.0195



140.6010, -28.3973, 8.2429

Triad

The Triadic color harmony groups three colors that are evenly spaced from another and form a triangle on the color wheel.



143.6300, -28.9046, 31.0195



117.7160, 20.3530, -88.3279



148.3760, 20.0276, 16.3332

Complementary

The Complementary color scheme is a pair of colors which are on the opposite of each other on the color wheel.



143.6300, -28.9046, 31.0195



120.3700, 28.9046, -31.0195

Split Complementary

Split-complementary colors differ from the complementary color scheme. The scheme consists of three colors, the original color and two neighbors of the complement color.



144.0880, 30.0296, -18.4942



143.6300, -28.9046, 31.0195



114.6510, 35.6681, -100.5489

Square

The Square scheme is like the rectangle color scheme, but the four colors are evenly spaced on the color wheel.



143.6300, -28.9046, 31.0195



130.8230, -1.8847, -48.9568



132.2140, 35.3905, -58.0697



148.0880, 6.8586, 40.2648

Rectangle

The Rectangle color scheme consists of four colors that form a rectangle on the color wheel.



143.6300, -28.9046, 31.0195



138.5710, -22.9595, -9.2708



132.2140, 35.3905, -58.0697



147.6350, 23.8439, 5.5821

Sweetspot

The Sweet Spot groups the original color and five complimentary colors.



143.6300, -28.9046, 31.0195



217.8030, -11.2419, 12.4508



117.8940, 4.4893, 53.5900



108.6220, -6.7156, 7.3475



245.0000, 0.0000, 0.0000



117.0000, 0.0000, 0.0000

Same Dimension

The Same Dimension uses a secret algorithm to generate beautiful new colors.



143.6300, -28.9046, 31.0195



177.2010, -44.9621, 48.0587



166.7890, -40.3220, 6.3240



85.6260, -2.7736, 2.9590



95.6420, -47.1515, 50.3030



15.9920, -7.8841, 8.7770

Inverse Universe

The Inverse Universe completely reimagines the original color for something new.



120.3700, 28.9046, -31.0195



140.7990, 44.9621, -48.0587



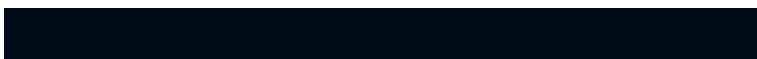
97.2110, 40.3220, -6.3240



83.3740, 2.7736, -2.9590



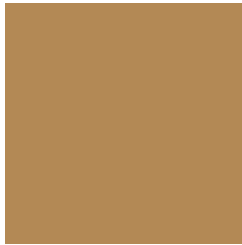
57.3580, 47.1515, -50.3030



9.4210, 8.1734, -8.2622

Previews

White Background



This preview shows how the YUV color 143.6300, -28.9046, 31.0195 looks on a white background.

Color Contrast Check

Large Text (above 18pt) WCAG AA ✓ Pass

Any Text WCAG AA × Fail

Large Text (above 18pt) WCAG AAA × Fail

Any Text WCAG AAA × Fail

Black Background



This preview shows how the YUV color 143.6300, -28.9046, 31.0195 looks on a black background.

Color Contrast Check

Large Text (above 18pt) WCAG AA ✓ Pass

Any Text WCAG AA ✓ Pass

Large Text (above 18pt) WCAG AAA ✓ Pass

Any Text WCAG AAA × Fail

If you want to check with other color combinations, try the [Color Contrast Checker](#).

YUV 143.6300, -28.9046, 31.0195

Background



This preview shows how black text looks on a background with the YUV color 143.6300, -28.9046, 31.0195.



This preview shows how white text looks on a background with the YUV color 143.6300, -28.9046,

Color Blindness Simulation

Color vision deficiency is a very complex topic, and I could not describe the different causes any better than Wikipedia does, so if you want to learn more, you should check out their [article about color blindness](#).

Dichromacy



Original Color

143.6300, -28.9046, 31.0195

Protanopia

142.3890, -26.8138, 13.6908

Deuteranopia

143.3200, -28.7518, 28.6604



Tritanopia

147.2860, -3.5920, 32.1982

Trichromacy



Original Color

143.6300, -28.9046, 31.0195

Protanomaly

142.9060, -27.5617, 20.2534

Deuteranomaly

143.6190, -28.8992, 29.2751

Tritanomaly

146.1690, -12.9013, 31.4238

Monochromacy



Original Color

143.6300, -28.9046, 31.0195

Achromatopsia

144.0000, 0.0000, 0.0000

Achromatomaly

143.7320, -10.2209, 11.6360

CSS Examples

Text

The CSS property to change the color of the text to YUV 143.6300, -28.9046, 31.0195 is called "color". The color property can be set on classes, ids or directly on the HTML element.

This example shows how text in the color `rgb(179, 137, 85)` looks like.

```
.text, #text, p{  
  color:rgb(179, 137, 85)  
}
```

If you want to add a text shadow in that color use the text-shadow property, you can generate a text shadow directly with our [CSS Text Shadow Generator](#).

Here you see how black text with a 4 pixel rgb(179, 137, 85) colored shadow looks like.

```
.shadow{ text-shadow: 4px 4px 2px rgb(179, 137, 85) }
```

Border

The CSS property to change the border of an element to YUV 143.6300, -28.9046, 31.0195 is called "border".

The border property can be set on classes, ids or directly on the HTML element.

This example shows the color as border, it can be applied via the CSS property "border" or "border-color".

```
.border, #border, table{ border:4px solid rgb(179, 137, 85) }
```


If only the border color should be changed use the property `border-color`.

```
.border{ border-color:rgb(179, 137, 85) }
```

If you want to add a box shadow in that color use:

Here you see how a box with a 4 pixel `rgb(179, 137, 85)` colored shadow looks like.

```
.boxshadow{ -moz-box-shadow:4px 4px 4px  
4px rgb(179, 137, 85); -webkit-box-  
shadow:4px 4px 4px 4px rgb(179, 137, 85);  
box-shadow:4px 4px 4px 4px rgb(179, 137,  
85) }
```

Background

The CSS property to change the background color of an element to YUV 143.6300, -28.9046, 31.0195 is called "background". The background property can be set on classes, ids or directly on the HTML element.

```
.background, #background, body{  
background: rgb(179, 137, 85) }
```

If only the background color should be changed can be used:

```
.background{ background-color: rgb(179,  
137, 85) }
```

This example shows the color as background, it is applied via the CSS property "background".

To optimize and compress your CSS code, you can use our [online CSS compressor and optimizer](#) based on csstidy. If you want to create a linear or radial gradient as background or border, check our [CSS Gradient Generator](#).

Hey! You found this booklet interesting? Support Converting Colors with the new Membership Option!

The pro membership hides all ads, plus gives you double the colors in the color bucket, and more awesome pro features!

[Learn more, Memberships starting at \\$2.50/m!](#)

**Follow me
on Twitter!**

@ConvertingColor