

Converting Colors

YUV(143.7230, -29.9364,
35.3229)

Have a look what the booklet for
YUV(143.7230, -29.9364, 35.3229)
contains.

YUV(143.7230, -29.9364, 35.3229)	3
<i>Conversions</i>	4
<i>Details</i>	6
<i>Harmonies</i>	12
<i>Previews</i>	24
<i>Color Blindness Simulation</i>	28
<i>CSS Examples</i>	31

Color

**YUV(143.7230, -29.9364,
35.3229)**

Conversions

Conversions Part 1

Format	Color
Hex	B88753
RGB	184, 135, 83
RGB Percent	72%, 53%, 33%
CMY	0.2784, 0.4706, 0.6745
CMYK	0.00, 0.27, 0.55, 0.28
HSL	31°, 42%, 52%
HSV	31°, 55%, 72%
XYZ	29.9925, 28.1428, 12.0349
YIQ	143.7230, 45.8960, -5.7840

Conversions

Conversions Part 2

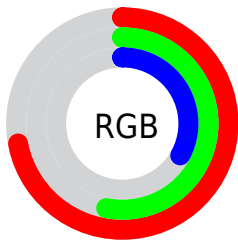
Format	Color
R_{YB}	178, 184, 83
Decimal	12093267
CIE Lab	60.02, 12.74, 35.08
CIE LCh	60, 37.325, 70.039
Yxy	28.1428, 0.4274, 0.4011
Android (android.graphics.Color)	4290283347 (0xFFB88753)
YUV	143.7230, -29.9364, 35.3229
Hunter-Lab	53.0498, 8.0804, 23.6843

Details

The YUV color **143.7230, -29.9364, 35.3229** is a dark color, and the websafe version is hex **CC9966**. A complement of this color would be **123.2770, 29.9364, -35.3229**, and the grayscale version is **144.0000, 0.0000, 0.0000**.

A 20% lighter version of the original color is **197.9900, -31.5471, 38.5968**, and **92.2710, -27.7416, 31.3343** is the 20% darker color. If you saturate the color by 10%, you get **136.3880, -35.1943, 41.7557**, and if you desaturate by 10%, it is **151.0580, -24.6786, 28.8901**.

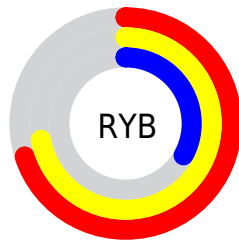
Distribution



Red (72%)

Green (53%)

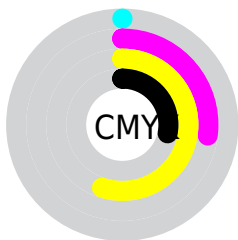
Blue (33%)



Red (70%)

Yellow (72%)

Blue (33%)

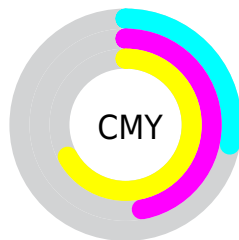


Cyan (0%)

Magenta (27%)

Yellow (55%)

Black (28%)



Cyan (28%)

Magenta (47%)

Yellow (67%)

Brightness & Saturation Gradients

These gradients show how the YUV color 143.7230, -29.9364, 35.3229 changes by changing the brightness by 10 percent. The first figure shows a shift by +10% for each color and the second figure -10%.

Similar to the brightness gradients but the following saturation gradients show a change of the YUV color 143.7230, -29.9364, 35.3229 by changing the saturation by 10% instead.

■ 143.7230,
-29.9364, 35.3229

■ 143.7230,
-29.9364, 35.3229

255.0000, 0.0000,
0.0000

■ 117.9400,
-29.0574, 33.3786

■ 197.9900,
-31.5471, 38.5968

■ 92.2710, -27.7416,
31.3343

■ 221.2770,
-30.2096, 29.5751

■ 67.9610, -27.5888,
28.9752

■ 240.7910,
-26.5190, 12.4613

■ 45.9050, -22.6312,
25.5163

■ 250.4400,
-17.4719, 3.9991

■ 26.3910, -13.0108,
19.8281

■ 253.7460, -4.8048,
1.0998

■ 7.8880, -3.3958,
15.8842

■ 0.0000, 0.0000,

0.0000

■ 143.7230,
-29.9364, 35.3229

■ 143.7230,
-29.9364, 35.3229

■ 136.3880,
-35.1943, 41.7557

■ 151.0580,
-24.6786, 28.8901

■ 128.9390,
-40.8889, 48.2885

■ 158.5070,
-18.9840, 22.3574

■ 121.6040,
-46.1468, 54.7213

■ 165.8420,
-13.7261, 15.9246

■ 114.1550,
-51.8414, 61.2541

■ 173.2910, -8.0315,
9.3918

■ 110.7810,
-54.6150, 64.2131

■ 180.6260, -2.7736,
2.9590

■ 187.9610, 2.4842,
-3.4738

■ 194.8230, 8.4683,
-9.4918

■ 202.1580, 13.7261,
-15.9246

■ 209.6070, 19.4207,
-22.4573

Harmonies

Analogous

The Analogous color harmony consists of three colors that are next to each other on the color wheel.



145.3410, -20.3811, 50.5669



143.7230, -29.9364, 35.3229



141.0530, -30.5921, 12.2315

Triad

The Triadic color harmony groups three colors that are evenly spaced from another and form a triangle on the color wheel.



143.7230, -29.9364, 35.3229



112.7640, 20.8223, -98.8940



148.1520, 23.0961, 12.1447

Complementary

The Complementary color scheme is a pair of colors which are on the opposite of each other on the color wheel.



143.7230, -29.9364, 35.3229



123.2770, 29.9364, -35.3229

Split Complementary

Split-complementary colors differ from the complementary color scheme. The scheme consists of three colors, the original color and two neighbors of the complement color.



142.1410, 32.9615, -25.5567



143.7230, -29.9364, 35.3229



115.1240, 34.9419, -100.9637

Square

The Square scheme is like the rectangle color scheme, but the four colors are evenly spaced on the color wheel.



143.7230, -29.9364, 35.3229



130.4380, -4.6529, -47.7421



127.3370, 38.7809, -72.2095



148.7720, 9.4794, 39.6650

Rectangle

The Rectangle color scheme consists of four colors that form a rectangle on the color wheel.



143.7230, -29.9364, 35.3229



138.4960, -25.8805, -5.6970



127.3370, 38.7809, -72.2095



147.1120, 27.0598, 0.7788

Sweetspot

The Sweet Spot groups the original color and five complimentary colors.



143.7230, -29.9364, 35.3229



224.4010, -11.5367, 13.6803



119.0130, 7.3886, 56.9936



110.9210, -6.8631, 7.9623



247.0000, 0.0000, 0.0000



120.0000, 0.0000, 0.0000

Same Dimension

The Same Dimension uses a secret algorithm to generate beautiful new colors.



143.7230, -29.9364, 35.3229



176.6750, -47.1678, 55.5360



172.4860, -44.1166, 10.0978



88.0390, -2.4842, 3.4738



93.6040, -46.1468, 54.7213



16.5900, -8.1789, 10.0066

Inverse Universe

The Inverse Universe completely reimagines the original color for something new.



123.2770, 29.9364, -35.3229



144.3250, 47.1678, -55.5360



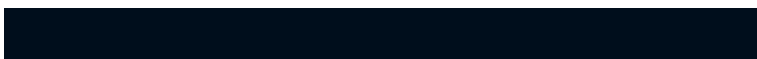
94.5140, 44.1166, -10.0978



86.3740, 2.7736, -2.9590



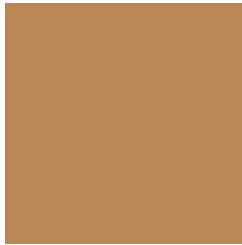
61.8090, 46.4362, -54.2065



11.4100, 8.1789, -10.0066

Previews

White Background



This preview shows how the YUV color 143.7230, -29.9364, 35.3229 looks on a white background.

Color Contrast Check

Large Text (above 18pt) WCAG AA ✓ Pass

Any Text WCAG AA × Fail

Large Text (above 18pt) WCAG AAA × Fail

Any Text WCAG AAA × Fail

Black Background



This preview shows how the YUV color 143.7230, -29.9364, 35.3229 looks on a black background.

Color Contrast Check

Large Text (above 18pt) WCAG AA ✓ Pass

Any Text WCAG AA ✓ Pass

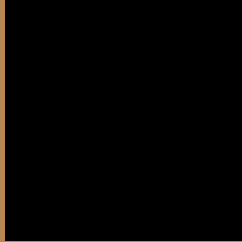
Large Text (above 18pt) WCAG AAA ✓ Pass

Any Text WCAG AAA × Fail

If you want to check with other color combinations, try the [Color Contrast Checker](#).

YUV 143.7230, -29.9364, 35.3229

Background



This preview shows how black text looks on a background with the YUV color 143.7230, -29.9364, 35.3229.



This preview shows how white text looks on a background with the YUV color 143.7230, -29.9364,

Color Blindness Simulation

Color vision deficiency is a very complex topic, and I could not describe the different causes any better than Wikipedia does, so if you want to learn more, you should check out their [article about color blindness](#).

Dichromacy



Original Color

143.7230, -29.9364, 35.3229

Protanopia

142.5740, -27.3980, 14.4056

Deuteranopia

143.2770, -30.2096, 29.5751



Tritanopia

147.0800, -4.4764, 35.8868

Trichromacy



Original Color

143.7230, -29.9364, 35.3229

Protanomaly

142.8030, -28.0039, 22.0978

Deuteranomaly

143.5870, -30.3624, 31.9342

Tritanomaly

146.2620, -13.9332, 35.7272

Monochromacy



Original Color

143.7230, -29.9364, 35.3229

Achromatopsia

144.0000, 0.0000, 0.0000

Achromatomaly

144.2160, -10.9525, 12.9656

CSS Examples

Text

The CSS property to change the color of the text to YUV 143.7230, -29.9364, 35.3229 is called "color". The color property can be set on classes, ids or directly on the HTML element.

This example shows how text in the color `rgb(184, 135, 83)` looks like.

```
.text, #text, p{  
    color:rgb(184, 135, 83)  
}
```

If you want to add a text shadow in that color use the text-shadow property, you can generate a text shadow directly with our [CSS Text Shadow Generator](#).

Here you see how black text with a 4 pixel rgb(184, 135, 83) colored shadow looks like.

```
.shadow{ text-shadow: 4px 4px 2px rgb(184, 135, 83) }
```

Border

The CSS property to change the border of an element to YUV 143.7230, -29.9364, 35.3229 is called "border".

The border property can be set on classes, ids or directly on the HTML element.

This example shows the color as border, it can be applied via the CSS property "border" or "border-color".

```
.border, #border, table{ border:4px solid rgb(184, 135, 83) }
```


If only the border color should be changed use the property `border-color`.

```
.border{ border-color:rgb(184, 135, 83) }
```

If you want to add a box shadow in that color use:

Here you see how a box with a 4 pixel `rgb(184, 135, 83)` colored shadow looks like.

```
.boxshadow{ -moz-box-shadow:4px 4px 4px  
4px rgb(184, 135, 83); -webkit-box-  
shadow:4px 4px 4px 4px rgb(184, 135, 83);  
box-shadow:4px 4px 4px 4px rgb(184, 135,  
83) }
```

Background

The CSS property to change the background color of an element to YUV 143.7230, -29.9364, 35.3229 is called "background". The background property can be set on classes, ids or directly on the HTML element.

```
.background, #background, body{  
background: rgb(184, 135, 83) }
```

If only the background color should be changed can be used:

```
.background{ background-color: rgb(184,  
135, 83) }
```

This example shows the color as background, it is applied via the CSS property "background".

To optimize and compress your CSS code, you can use our [online CSS compressor and optimizer](#) based on csstidy. If you want to create a linear or radial gradient as background or border, check our [CSS Gradient Generator](#).

Hey! You found this booklet interesting? Support Converting Colors with the new Membership Option!

The pro membership hides all ads, plus gives you double the colors in the color bucket, and more awesome pro features!

[Learn more, Memberships starting at \\$2.50/m!](#)

**Follow me
on Twitter!**

@ConvertingColor