

Converting Colors

YUV(143.8640, -10.2860,
32.5683)

Have a look what the booklet for
YUV(143.8640, -10.2860, 32.5683)
contains.

YUV(143.8640, -10.2860, 32.5683)	3
<i>Conversions</i>	4
<i>Details</i>	6
<i>Harmonies</i>	12
<i>Previews</i>	24
<i>Color Blindness Simulation</i>	28
<i>CSS Examples</i>	31

Color

**YUV(143.8640, -10.2860,
32.5683)**

Conversions

Conversions Part 1

Format	Color
Hex	B5817B
RGB	181, 129, 123
RGB Percent	71%, 51%, 48%
CMY	0.2902, 0.4941, 0.5176
CMYK	0.00, 0.29, 0.32, 0.29
HSL	6°, 28%, 60%
HSV	6°, 32%, 71%
XYZ	30.4815, 26.9543, 22.3350
YIQ	143.8640, 32.9180, 9.1580

Conversions

Conversions Part 2

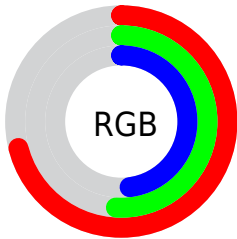
Format	Color
R_{YB}	181, 130, 123
Decimal	11895163
CIE _{Lab}	58.93, 19.26, 11.24
CIE _{LCh}	59, 22.301, 30.269
Yxy	26.9543, 0.3821, 0.3379
Android (android.graphics.Color)	4290085243 (0xFFB5817B)
YUV	143.8640, -10.2860, 32.5683
Hunter-Lab	51.9176, 13.9439, 10.8356

Details

The YUV color **143.8640, -10.2860, 32.5683** is a dark color, and the websafe version is hex **CC9999**. A complement of this color would be **160.1360, 10.2860, -32.5683**, and the grayscale version is **144.0000, 0.0000, 0.0000**.

A 20% lighter version of the original color is **197.9460, -11.3124, 35.1274**, and **92.7820, -9.2595, 30.0092** is the 20% darker color. If you saturate the color by 10%, you get **132.4200, -13.5181, 42.6047**, and if you desaturate by 10%, it is **155.3080, -7.0538, 22.5319**.

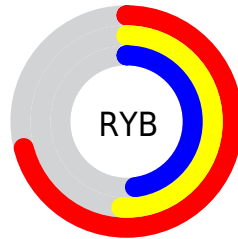
Distribution



Red (71%)

Green (51%)

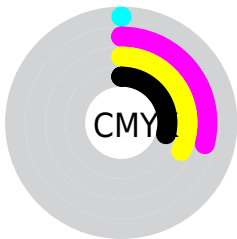
Blue (48%)



Red (71%)

Yellow (51%)

Blue (48%)

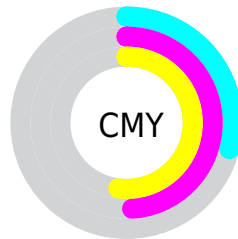


Cyan (0%)

Magenta (29%)

Yellow (32%)

Black (29%)



Cyan (29%)

Magenta (49%)

Yellow (52%)

Brightness & Saturation Gradients

These gradients show how the YUV color 143.8640, -10.2860, 32.5683 changes by changing the brightness by 10 percent. The first figure shows a shift by +10% for each color and the second figure -10%.

Similar to the brightness gradients but the following saturation gradients show a change of the YUV color 143.8640, -10.2860, 32.5683 by changing the saturation by 10% instead.

■ 143.8640,
-10.2860, 32.5683

■ 143.8640,
-10.2860, 32.5683

■ 255.0000, 0.0000,
0.0000

■ 117.9670, -9.8437,
30.7239

■ 197.9460,
-11.3124, 35.1274

■ 92.7820, -9.2595,
30.0092

■ 222.6570, -9.6909,
28.3648

■ 68.9990, -8.3805,
28.0649

■ 242.2850, -5.5635,
11.1511

■ 45.9170, -7.3541,
25.5058

■ 22.9770, -8.3697,
24.5762

■ 8.4860, -3.6906,
17.1138

■ 0.0000, 0.0000,

0.0000

■ 143.8640,
-10.2860, 32.5683

■ 143.8640,
-10.2860, 32.5683

■ 132.4200,
-13.5181, 42.6047

■ 155.3080, -7.0538,
22.5319

■ 120.9760,
-16.7502, 52.6410

■ 166.7520, -3.8217,
12.4955

■ 108.9450,
-19.6929, 63.1922

■ 178.7830, -0.8790,
1.9443

■ 97.5010, -22.9250,
73.2286

■ 190.2270, 2.3531,
-8.0921

■ 86.0570, -26.1571,
83.2650

■ 201.7850, 6.0220,
-18.2284

■ 74.4990, -29.8260,
93.4014

■ 213.2290, 9.2541,
-28.2648

■ 65.2720, -32.1791,
101.4935

■ 225.2600, 12.1968,
-38.8160

■ 232.8740, 10.9081,
-45.4935

Harmonies

Analogous

The Analogous color harmony consists of three colors that are next to each other on the color wheel.



145.1440, -1.5500, 30.5687



143.8640, -10.2860, 32.5683



142.3980, -16.9582, 25.9610

Triad

The Triadic color harmony groups three colors that are evenly spaced from another and form a triangle on the color wheel.



143.8640, -10.2860, 32.5683



136.0330, -6.9183, -21.0769



140.4440, 19.9941, -19.6834

Complementary

The Complementary color scheme is a pair of colors which are on the opposite of each other on the color wheel.



143.8640, -10.2860, 32.5683



160.1360, 10.2860, -32.5683

Split Complementary

Split-complementary colors differ from the complementary color scheme. The scheme consists of three colors, the original color and two neighbors of the complement color.



135.5190, 19.4641, -36.4122



143.8640, -10.2860, 32.5683



133.6920, 3.6028, -35.6869

Square

The Square scheme is like the rectangle color scheme, but the four colors are evenly spaced on the color wheel.



143.8640, -10.2860, 32.5683



138.9660, -15.2662, -3.4782



132.6940, 13.9549, -42.7046



143.8380, 15.8559, 1.0191

Rectangle

The Rectangle color scheme consists of four colors that form a rectangle on the color wheel.



143.8640, -10.2860, 32.5683



141.3000, -18.3889, 18.1539



132.6940, 13.9549, -42.7046



138.8130, 20.3052, -26.1460

Sweetspot

The Sweet Spot groups the original color and five complimentary colors.



143.8640, -10.2860, 32.5683



219.9370, -4.4059, 13.2103



146.2700, 14.1639, 30.4582



108.3600, -2.6425, 7.5773



245.0000, 0.0000, 0.0000



117.0000, 0.0000, 0.0000

Same Dimension

The Same Dimension uses a secret algorithm to generate beautiful new colors.



143.8640, -10.2860, 32.5683



177.7800, -16.1605, 50.1819



160.8870, -18.6783, 17.6391



83.2780, -1.6161, 5.0182



55.1390, -27.1835, 85.8241



9.5350, -4.7008, 14.4398

Inverse Universe

The Inverse Universe completely reimagines the original color for something new.



160.1360, 10.2860, -32.5683



202.2200, 16.1605, -50.1819



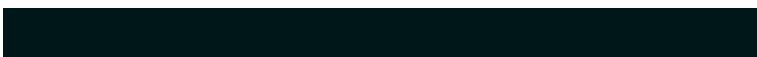
143.1130, 18.6783, -17.6391



85.7220, 1.6161, -5.0182



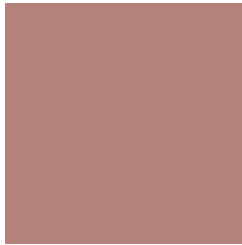
97.8610, 27.1835, -85.8241



16.4650, 4.7008, -14.4398

Previews

White Background



This preview shows how the YUV color 143.8640, -10.2860, 32.5683 looks on a white background.

Color Contrast Check

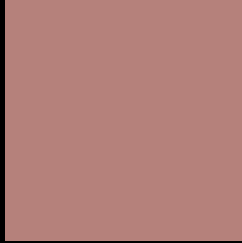
Large Text (above 18pt) WCAG AA ✓ Pass

Any Text WCAG AA × Fail

Large Text (above 18pt) WCAG AAA × Fail

Any Text WCAG AAA × Fail

Black Background



This preview shows how the YUV color 143.8640, -10.2860, 32.5683 looks on a black background.

Color Contrast Check

Large Text (above 18pt) WCAG AA ✓ Pass

Any Text WCAG AA ✓ Pass

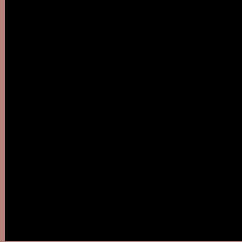
Large Text (above 18pt) WCAG AAA ✓ Pass

Any Text WCAG AAA × Fail

If you want to check with other color combinations, try the [Color Contrast Checker](#).

YUV 143.8640, -10.2860, 32.5683

Background



This preview shows how black text looks on a background with the YUV color 143.8640, -10.2860, 32.5683.



This preview shows how white text looks on a background with the YUV color 143.8640, -10.2860, 32.5683.

32.5683.

Color Blindness Simulation

Color vision deficiency is a very complex topic, and I could not describe the different causes any better than Wikipedia does, so if you want to learn more, you should check out their [article about color blindness](#).

Dichromacy



Original Color

143.8640, -10.2860, 32.5683

Protanopia

142.4260, -6.1260, 4.8884

Deuteranopia

143.0640, -10.3846, 17.4839



Tritanopia

144.5850, -3.7394, 32.8130

Trichromacy



Original Color

143.8640, -10.2860, 32.5683

Protanomaly

142.7370, -7.7583, 15.1397

Deuteranomaly

143.3960, -10.5482, 23.3317

Tritanomaly

144.6020, -6.2128, 32.7980

Monochromacy



Original Color

143.8640, -10.2860, 32.5683

Achromatopsia

144.0000, 0.0000, 0.0000

Achromatomaly

144.0400, -3.9637, 11.3659

CSS Examples

Text

The CSS property to change the color of the text to YUV 143.8640, -10.2860, 32.5683 is called "color". The color property can be set on classes, ids or directly on the HTML element.

This example shows how text in the color `rgb(181, 129, 123)` looks like.

```
.text, #text, p{  
  color:rgb(181, 129, 123)  
}
```

If you want to add a text shadow in that color use the text-shadow property, you can generate a text shadow directly with our [CSS Text Shadow Generator](#).

Here you see how black text with a 4 pixel rgb(181, 129, 123) colored shadow looks like.

```
.shadow{ text-shadow: 4px 4px 2px rgb(181, 129, 123) }
```

Border

The CSS property to change the border of an element to YUV 143.8640, -10.2860, 32.5683 is called "border".

The border property can be set on classes, ids or directly on the HTML element.

This example shows the color as border, it can be applied via the CSS property "border" or "border-color".

```
.border, #border, table{ border:4px solid rgb(181, 129, 123) }
```


If only the border color should be changed use the property `border-color`.

```
.border{ border-color:rgb(181, 129, 123) }
```

If you want to add a box shadow in that color use:

Here you see how a box with a 4 pixel `rgb(181, 129, 123)` colored shadow looks like.

```
.boxshadow{ -moz-box-shadow:4px 4px 4px 4px rgb(181, 129, 123); -webkit-box-shadow:4px 4px 4px 4px rgb(181, 129, 123); box-shadow:4px 4px 4px 4px rgb(181, 129, 123) }
```

Background

The CSS property to change the background color of an element to YUV 143.8640, -10.2860, 32.5683 is called "background". The background property can be set on classes, ids or directly on the HTML element.

```
.background, #background, body{  
background: rgb(181, 129, 123) }
```

If only the background color should be changed can be used:

```
.background{ background-color: rgb(181,  
129, 123) }
```

This example shows the color as background, it is applied via the CSS property "background".

To optimize and compress your CSS code, you can use our [online CSS compressor and optimizer](#) based on csstidy. If you want to create a linear or radial gradient as background or border, check our [CSS Gradient Generator](#).

Hey! You found this booklet interesting? Support Converting Colors with the new Membership Option!

The pro membership hides all ads, plus gives you double the colors in the color bucket, and more awesome pro features!

[Learn more, Memberships starting at \\$2.50/m!](#)

**Follow me
on Twitter!**

@ConvertingColor