

Converting Colors

YUV(143.9560, -13.2893,
15.8246)

Have a look what the booklet for
YUV(143.9560, -13.2893, 15.8246)
contains.

YUV(143.9560, -13.2893, 15.8246)	3
<i>Conversions</i>	4
<i>Details</i>	6
<i>Harmonies</i>	12
<i>Previews</i>	24
<i>Color Blindness Simulation</i>	28
<i>CSS Examples</i>	31

Color

**YUV(143.9560, -13.2893,
15.8246)**

Conversions

Conversions Part 1

Format	Color
Hex	A28C75
RGB	162, 140, 117
RGB Percent	64%, 55%, 46%
CMY	0.3647, 0.4510, 0.5412
CMYK	0.00, 0.14, 0.28, 0.36
HSL	31°, 19%, 55%
HSV	31°, 28%, 64%
XYZ	27.4893, 27.7219, 20.7316
YIQ	143.9560, 20.4950, -2.4890

Conversions

Conversions Part 2

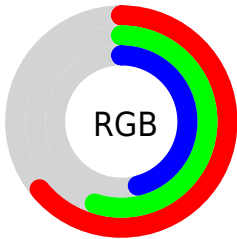
Format	Color
R_{YB}	160, 162, 117
Decimal	10652789
CIE _{Lab}	59.64, 4.64, 15.35
CIE _{LCh}	60, 16.034, 73.189
Yxy	27.7219, 0.3620, 0.3650
Android (android.graphics.Color)	4288842869 (0xFFA28C75)
YUV	143.9560, -13.2893, 15.8246
Hunter-Lab	52.6516, 1.0541, 13.5106

Details

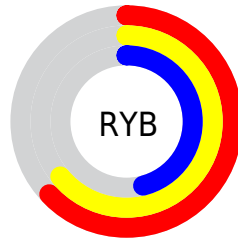
The YUV color **143.9560, -13.2893, 15.8246** is a dark color, and the websafe version is hex **999999**. A complement of this color would be **135.0440, 13.2893, -15.8246**, and the grayscale version is **144.0000, 0.0000, 0.0000**.

A 20% lighter version of the original color is **198.0270, -14.3103, 16.6393**, and **93.5860, -12.1209, 14.3951** is the 20% darker color. If you saturate the color by 10%, you get **137.4360, -17.9629, 21.5426**, and if you desaturate by 10%, it is **150.4760, -8.6157, 10.1065**.

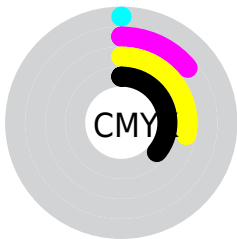
Distribution



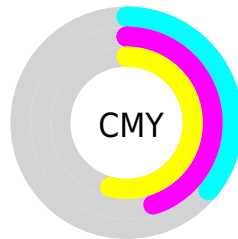
- Red (64%)
- Green (55%)
- Blue (46%)



- Red (63%)
- Yellow (64%)
- Blue (46%)



- Cyan (0%)
- Magenta (14%)
- Yellow (28%)
- Black (36%)



- Cyan (36%)
- Magenta (45%)
- Yellow (54%)

Brightness & Saturation Gradients

These gradients show how the YUV color 143.9560, -13.2893, 15.8246 changes by changing the brightness by 10 percent. The first figure shows a shift by +10% for each color and the second figure -10%.

Similar to the brightness gradients but the following saturation gradients show a change of the YUV color 143.9560, -13.2893, 15.8246 by changing the saturation by 10% instead.

■ 143.9560,
-13.2893, 15.8246

■ 143.9560,
-13.2893, 15.8246

255.0000, 0.0000,
0.0000

■ 118.3580,
-12.9945, 14.5950

■ 198.0270,
-14.3103, 16.6393

■ 93.5860, -12.1209,
14.3951

■ 225.6250,
-14.6051, 17.8689

■ 69.9880, -11.8261,
13.1655

■ 248.5310,
-12.0938, 5.6733

■ 47.5040, -11.0945,
11.8360

254.7720, -0.8736,
0.2000

■ 25.7490, -12.6943,
11.6211

■ 2.3920, -1.1793,
4.9182

■ 0.0000, 0.0000,

0.0000

■ 143.9560,
-13.2893, 15.8246

■ 143.9560,
-13.2893, 15.8246

■ 137.4360,
-17.9629, 21.5426

■ 150.4760, -8.6157,
10.1065

■ 130.9160,
-22.6366, 27.2607

■ 156.9960, -3.9420,
4.3885

■ 124.2820,
-27.7470, 33.0787

■ 163.6300, 1.1684,
-1.4295

■ 117.7620,
-32.4207, 38.7967

■ 170.1500, 5.8421,
-7.1475

■ 111.2420,
-37.0943, 44.5148

■ 176.6700, 10.5157,
-12.8656

■ 104.7220,
-41.7679, 50.2328

■ 183.1900, 15.1893,
-18.5836

■ 98.7890, -46.7310,
55.4360

■ 189.1230, 20.1524,
-23.7869

■ 97.1590, -47.8994,
56.8656

■ 195.7570, 25.2628,
-29.6049

■ 201.3650, 26.4421,
-34.5231

Harmonies

Analogous

The Analogous color harmony consists of three colors that are next to each other on the color wheel.



145.2110, -9.9640, 22.6170



143.9560, -13.2893, 15.8246



142.5910, -13.1094, 4.7437

Triad

The Triadic color harmony groups three colors that are evenly spaced from another and form a triangle on the color wheel.



143.9560, -13.2893, 15.8246



138.3170, 5.7597, -27.4650



145.7480, 8.9982, 7.2370

Complementary

The Complementary color scheme is a pair of colors which are on the opposite of each other on the color wheel.



143.9560, -13.2893, 15.8246



135.0440, 13.2893, -15.8246

Split Complementary

Split-complementary colors differ from the complementary color scheme. The scheme consists of three colors, the original color and two neighbors of the complement color.



144.0990, 13.2622, -7.1028



143.9560, -13.2893, 15.8246



138.5110, 11.5801, -27.6351

Square

The Square scheme is like the rectangle color scheme, but the four colors are evenly spaced on the color wheel.



143.9560, -13.2893, 15.8246



139.0100, -1.9769, -19.3028



140.9510, 14.3212, -20.1280



146.5060, 2.7085, 17.9732

Rectangle

The Rectangle color scheme consists of four colors that form a rectangle on the color wheel.



143.9560, -13.2893, 15.8246



140.9320, -10.3195, -3.4484



140.9510, 14.3212, -20.1280



145.4700, 10.6143, 2.2188

Sweetspot

The Sweet Spot groups the original color and five complimentary colors.



143.9560, -13.2893, 15.8246



204.7790, -4.8210, 6.3328



133.0770, 3.4130, 25.3655



102.8110, -3.3578, 3.6738



235.0000, 0.0000, 0.0000



107.0000, 0.0000, 0.0000

Same Dimension

The Same Dimension uses a secret algorithm to generate beautiful new colors.



143.9560, -13.2893, 15.8246



184.0620, -20.7366, 24.5016



156.8700, -19.6559, 4.4990



78.6260, -2.7736, 2.9590



86.7930, -42.7889, 51.0475



10.6650, -5.2578, 6.4328

Inverse Universe

The Inverse Universe completely reimagines the original color for something new.



135.0440, 13.2893, -15.8246



169.9380, 20.7366, -24.5016



122.1300, 19.6559, -4.4990



76.3740, 2.7736, -2.9590



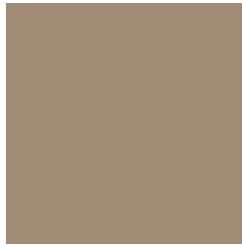
58.2070, 42.7889, -51.0475



7.3350, 5.2578, -6.4328

Previews

White Background



This preview shows how the YUV color 143.9560, -13.2893, 15.8246 looks on a white background.

Color Contrast Check

Large Text (above 18pt) WCAG AA ✓ Pass

Any Text WCAG AA × Fail

Large Text (above 18pt) WCAG AAA × Fail

Any Text WCAG AAA × Fail

Black Background



This preview shows how the YUV color 143.9560, -13.2893, 15.8246 looks on a black background.

Color Contrast Check

Large Text (above 18pt) WCAG AA ✓ Pass

Any Text WCAG AA ✓ Pass

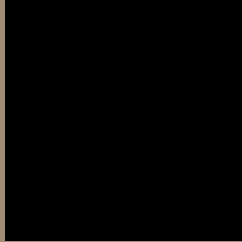
Large Text (above 18pt) WCAG AAA ✓ Pass

Any Text WCAG AAA × Fail

If you want to check with other color combinations, try the [Color Contrast Checker](#).

YUV 143.9560, -13.2893, 15.8246

Background



This preview shows how black text looks on a background with the YUV color 143.9560, -13.2893, 15.8246.



This preview shows how white text looks on a background with the YUV color 143.9560, -13.2893, 15.8246.

Color Blindness Simulation

Color vision deficiency is a very complex topic, and I could not describe the different causes any better than Wikipedia does, so if you want to learn more, you should check out their [article about color blindness](#).

Dichromacy



Original Color

143.9560, -13.2893, 15.8246

Protanopia

142.9550, -11.8098, 7.9325

Deuteranopia

144.2770, -13.4476, 19.9281



Tritanopia

145.8110, 0.0932, 16.8288

Trichromacy



Original Color

143.9560, -13.2893, 15.8246

Protanomaly

143.4500, -12.5468, 11.0064

Deuteranomaly

144.2660, -13.4421, 18.1837

Tritanomaly

144.8450, -4.8536, 16.7989

Monochromacy



Original Color

143.9560, -13.2893, 15.8246

Achromatopsia

144.0000, 0.0000, 0.0000

Achromatomaly

144.3660, -5.1104, 5.8180

CSS Examples

Text

The CSS property to change the color of the text to YUV 143.9560, -13.2893, 15.8246 is called "color". The color property can be set on classes, ids or directly on the HTML element.

This example shows how text in the color `rgb(162, 140, 117)` looks like.

```
.text, #text, p{  
    color:rgb(162, 140, 117)  
}
```

If you want to add a text shadow in that color use the text-shadow property, you can generate a text shadow directly with our [CSS Text Shadow Generator](#).

Here you see how black text with a 4 pixel rgb(162, 140, 117) colored shadow looks like.

```
.shadow{ text-shadow: 4px 4px 2px rgb(162, 140, 117) }
```

Border

The CSS property to change the border of an element to YUV 143.9560, -13.2893, 15.8246 is called "border".

The border property can be set on classes, ids or directly on the HTML element.

This example shows the color as border, it can be applied via the CSS property "border" or "border-color".

```
.border, #border, table{ border:4px solid rgb(162, 140, 117) }
```


If only the border color should be changed use the property `border-color`.

```
.border{ border-color:rgb(162, 140, 117) }
```

If you want to add a box shadow in that color use:

Here you see how a box with a 4 pixel `rgb(162, 140, 117)` colored shadow looks like.

```
.boxshadow{ -moz-box-shadow:4px 4px 4px  
4px rgb(162, 140, 117); -webkit-box-  
shadow:4px 4px 4px 4px rgb(162, 140, 117);  
box-shadow:4px 4px 4px 4px rgb(162, 140,  
117) }
```

Background

The CSS property to change the background color of an element to YUV 143.9560, -13.2893, 15.8246 is called "background". The background property can be set on classes, ids or directly on the HTML element.

```
.background, #background, body{  
background: rgb(162, 140, 117) }
```

If only the background color should be changed can be used:

```
.background{ background-color: rgb(162,  
140, 117) }
```

This example shows the color as background, it is applied via the CSS property "background".

To optimize and compress your CSS code, you can use our [online CSS compressor and optimizer](#) based on csstidy. If you want to create a linear or radial gradient as background or border, check our [CSS Gradient Generator](#).

Hey! You found this booklet interesting? Support Converting Colors with the new Membership Option!

The pro membership hides all ads, plus gives you double the colors in the color bucket, and more awesome pro features!

[Learn more, Memberships starting at \\$2.50/m!](#)

**Follow me
on Twitter!**

@ConvertingColor