

Converting Colors

YUV(144.1030, -29.6308,
30.6047)

Have a look what the booklet for
YUV(144.1030, -29.6308, 30.6047)
contains.

YUV(144.1030, -29.6308, 30.6047)	3
<i>Conversions</i>	4
<i>Details</i>	6
<i>Harmonies</i>	12
<i>Previews</i>	24
<i>Color Blindness Simulation</i>	28
<i>CSS Examples</i>	31

Color

**YUV(144.1030, -29.6308,
30.6047)**

Conversions

Conversions Part 1

Format	Color
Hex	B38A54
RGB	179, 138, 84
RGB Percent	70%, 54%, 33%
CMY	0.2980, 0.4588, 0.6706
CMYK	0.00, 0.23, 0.53, 0.30
HSL	34°, 38%, 52%
HSV	34°, 53%, 70%
XYZ	29.2791, 28.4008, 12.3262
YIQ	144.1030, 41.7700, -8.1020

Conversions

Conversions Part 2

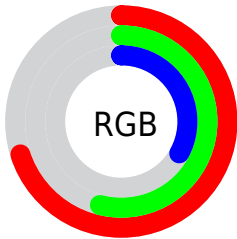
Format	Color
R_{YB}	156, 179, 84
Decimal	11766356
CIE _{Lab}	60.25, 9.02, 34.71
CIE _{LCh}	60, 35.867, 75.429
Yxy	28.4008, 0.4182, 0.4057
Android (android.graphics.Color)	4289956436 (0xFFB38A54)
YUV	144.1030, -29.6308, 30.6047
Hunter-Lab	53.2924, 4.8073, 23.5912

Details

The YUV color **144.1030, -29.6308, 30.6047** is a dark color, and the websafe version is hex **CC9966**. A complement of this color would be **118.8970, 29.6308, -30.6047**, and the grayscale version is **144.0000, 0.0000, 0.0000**.

A 20% lighter version of the original color is **198.3700, -31.2414, 33.8785**, and **92.9500, -27.5833, 27.2308** is the 20% darker color. If you saturate the color by 10%, you get **137.3550, -35.1780, 36.5227**, and if you desaturate by 10%, it is **150.8510, -24.0835, 24.6867**.

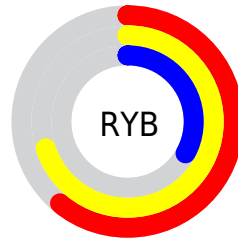
Distribution



Red (70%)

Green (54%)

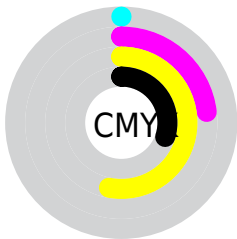
Blue (33%)



Red (61%)

Yellow (70%)

Blue (33%)

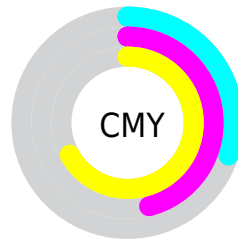


Cyan (0%)

Magenta (23%)

Yellow (53%)

Black (30%)



Cyan (30%)

Magenta (46%)

Yellow (67%)

Brightness & Saturation Gradients

These gradients show how the YUV color 144.1030, -29.6308, 30.6047 changes by changing the brightness by 10 percent. The first figure shows a shift by +10% for each color and the second figure -10%.

Similar to the brightness gradients but the following saturation gradients show a change of the YUV color 144.1030, -29.6308, 30.6047 by changing the saturation by 10% instead.

■ 144.1030,
-29.6308, 30.6047

■ 144.1030,
-29.6308, 30.6047

■ 255.0000, 0.0000,
0.0000

■ 118.3200,
-28.7518, 28.6604

■ 198.3700,
-31.2414, 33.8785

■ 92.9500, -27.5833,
27.2308

■ 223.1520,
-30.6409, 27.9307

■ 68.6400, -27.4305,
24.8717

■ 243.2530,
-27.2397, 10.3021

■ 46.7690, -23.0571,
22.1276

■ 250.5540,
-17.0351, 3.8991

■ 27.2550, -13.4367,
16.4394

■ 253.8600, -4.3680,
0.9998

■ 6.2790, -3.0955,
12.9103

■ 0.0000, 0.0000,

0.0000

■ 144.1030,
-29.6308, 30.6047

■ 144.1030,
-29.6308, 30.6047

■ 137.3550,
-35.1780, 36.5227

■ 150.8510,
-24.0835, 24.6867

■ 131.1940,
-41.0146, 41.9259

■ 157.0120,
-18.2469, 19.2835

■ 124.4460,
-46.5619, 47.8439

■ 163.7600,
-12.6997, 13.3655

■ 117.6980,
-52.1091, 53.7619

■ 170.5080, -7.1524,
7.4475

■ 113.3950,
-55.9037, 57.5356

■ 177.2560, -1.6052,
1.5295

■ 183.3030, 3.7946,
-3.7737

■ 190.0510, 9.3419,
-9.6917

■ 196.7990, 14.8891,
-15.6097

■ 203.5470, 20.4363,
-21.5277

Harmonies

Analogous

The Analogous color harmony consists of three colors that are next to each other on the color wheel.



145.6780, -21.5333, 46.7634



144.1030, -29.6308, 30.6047



141.4760, -28.8287, 6.5985

Triad

The Triadic color harmony groups three colors that are evenly spaced from another and form a triangle on the color wheel.



144.1030, -29.6308, 30.6047



113.4480, 23.4431, -99.4939



149.0880, 20.1696, 17.4628

Complementary

The Complementary color scheme is a pair of colors which are on the opposite of each other on the color wheel.



144.1030, -29.6308, 30.6047



118.8970, 29.6308, -30.6047

Split Complementary

Split-complementary colors differ from the complementary color scheme. The scheme consists of three colors, the original color and two neighbors of the complement color.



144.8000, 30.1716, -17.3646



144.1030, -29.6308, 30.6047



114.8790, 36.5417, -100.7489

Square

The Square scheme is like the rectangle color scheme, but the four colors are evenly spaced on the color wheel.



144.1030, -29.6308, 30.6047



130.6270, -1.2951, -51.4159



133.3280, 35.8273, -58.1697



148.9850, 6.4164, 42.1092

Rectangle

The Rectangle color scheme consists of four colors that form a rectangle on the color wheel.



144.1030, -29.6308, 30.6047



138.5600, -22.9541, -11.0151



133.3280, 35.8273, -58.1697



148.3470, 23.9859, 6.7117

Sweetspot

The Sweet Spot groups the original color and five complimentary colors.



144.1030, -29.6308, 30.6047



218.3900, -11.5313, 11.9360



117.0790, 3.9051, 54.3047



109.2090, -7.0050, 6.8327



245.0000, 0.0000, 0.0000



117.0000, 0.0000, 0.0000

Same Dimension

The Same Dimension uses a secret algorithm to generate beautiful new colors.



144.1030, -29.6308, 30.6047



177.5600, -46.1251, 47.7439



166.3760, -40.6114, 5.8092



85.6260, -2.7736, 2.9590



96.8160, -47.7303, 49.2734



15.9920, -7.8841, 8.7770

Inverse Universe

The Inverse Universe completely reimagines the original color for something new.



118.8970, 29.6308, -30.6047



138.4400, 46.1251, -47.7439



96.6240, 40.6114, -5.8092



83.3740, 2.7736, -2.9590



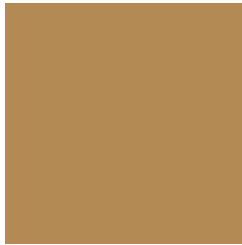
56.1840, 47.7303, -49.2734



9.4210, 8.1734, -8.2622

Previews

White Background



This preview shows how the YUV color 144.1030, -29.6308, 30.6047 looks on a white background.

Color Contrast Check

Large Text (above 18pt) WCAG AA ✓ Pass

Any Text WCAG AA × Fail

Large Text (above 18pt) WCAG AAA × Fail

Any Text WCAG AAA × Fail

Black Background



This preview shows how the YUV color 144.1030, -29.6308, 30.6047 looks on a black background.

Color Contrast Check

Large Text (above 18pt) WCAG AA ✓ Pass

Any Text WCAG AA ✓ Pass

Large Text (above 18pt) WCAG AAA ✓ Pass

Any Text WCAG AAA × Fail

If you want to check with other color combinations, try the [Color Contrast Checker](#).

YUV 144.1030, -29.6308, 30.6047

Background



This preview shows how black text looks on a background with the YUV color 144.1030, -29.6308, 30.6047.



This preview shows how white text looks on a background with the YUV color 144.1030, -29.6308, 30.6047.

Color Blindness Simulation

Color vision deficiency is a very complex topic, and I could not describe the different causes any better than Wikipedia does, so if you want to learn more, you should check out their [article about color blindness](#).

Dichromacy



Original Color

144.1030, -29.6308, 30.6047

Protanopia

143.1610, -27.6874, 13.8908

Deuteranopia

144.0920, -29.6254, 28.8603



Tritanopia

147.9870, -3.4446, 31.5834

Trichromacy



Original Color

144.1030, -29.6308, 30.6047

Protanomaly

143.3790, -28.2878, 19.8386

Deuteranomaly

144.3910, -29.7728, 29.4751

Tritanomaly

146.7560, -13.1907, 30.9090

Monochromacy



Original Color

144.1030, -29.6308, 30.6047

Achromatopsia

144.0000, 0.0000, 0.0000

Achromatomaly

144.2050, -10.9471, 11.2212

CSS Examples

Text

The CSS property to change the color of the text to YUV 144.1030, -29.6308, 30.6047 is called "color". The color property can be set on classes, ids or directly on the HTML element.

This example shows how text in the color `rgb(179, 138, 84)` looks like.

```
.text, #text, p{  
    color:rgb(179, 138, 84)  
}
```

If you want to add a text shadow in that color use the text-shadow property, you can generate a text shadow directly with our [CSS Text Shadow Generator](#).

Here you see how black text with a 4 pixel rgb(179, 138, 84) colored shadow looks like.

```
.shadow{ text-shadow: 4px 4px 2px rgb(179, 138, 84) }
```

Border

The CSS property to change the border of an element to YUV 144.1030, -29.6308, 30.6047 is called "border".

The border property can be set on classes, ids or directly on the HTML element.

This example shows the color as border, it can be applied via the CSS property "border" or "border-color".

```
.border, #border, table{ border:4px solid rgb(179, 138, 84) }
```


If only the border color should be changed use the property border-color.

```
.border{ border-color:rgb(179, 138, 84) }
```

If you want to add a box shadow in that color use:

Here you see how a box with a 4 pixel rgb(179, 138, 84) colored shadow looks like.

```
.boxshadow{ -moz-box-shadow:4px 4px 4px  
4px rgb(179, 138, 84); -webkit-box-  
shadow:4px 4px 4px 4px rgb(179, 138, 84);  
box-shadow:4px 4px 4px 4px rgb(179, 138,  
84) }
```

Background

The CSS property to change the background color of an element to YUV 144.1030, -29.6308, 30.6047 is called "background". The background property can be set on classes, ids or directly on the HTML element.

```
.background, #background, body{  
background: rgb(179, 138, 84) }
```

If only the background color should be changed can be used:

```
.background{ background-color: rgb(179,  
138, 84) }
```

This example shows the color as background, it is applied via the CSS property "background".

To optimize and compress your CSS code, you can use our [online CSS compressor and optimizer](#) based on csstidy. If you want to create a linear or radial gradient as background or border, check our [CSS Gradient Generator](#).

Hey! You found this booklet interesting? Support Converting Colors with the new Membership Option!

The pro membership hides all ads, plus gives you double the colors in the color bucket, and more awesome pro features!

[Learn more, Memberships starting at \\$2.50/m!](#)

**Follow me
on Twitter!**

@ConvertingColor