

Converting Colors

YUV(144.2820, -27.7470,
33.0787)

Have a look what the booklet for
YUV(144.2820, -27.7470, 33.0787)
contains.

YUV(144.2820, -27.7470, 33.0787)	3
Conversions	4
Details	6
Harmonies	12
Previews	24
Color Blindness Simulation	28
CSS Examples	31

Color

**YUV(144.2820, -27.7470,
33.0787)**

Conversions

Conversions Part 1

Format	Color
Hex	B68858
RGB	182, 136, 88
RGB Percent	71%, 53%, 35%
CMY	0.2863, 0.4667, 0.6549
CMYK	0.00, 0.25, 0.52, 0.29
HSL	31°, 39%, 53%
HSV	31°, 52%, 71%
XYZ	29.8570, 28.2580, 13.1132
YIQ	144.2820, 42.8240, -5.1760

Conversions

Conversions Part 2

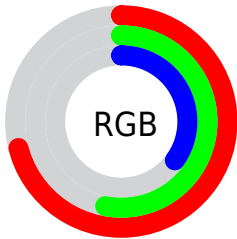
Format	Color
R_{YB}	178, 182, 88
Decimal	11962456
CIE _{Lab}	60.12, 11.78, 32.48
CIE _{LCh}	60, 34.547, 70.059
Yxy	28.2580, 0.4192, 0.3967
Android (android.graphics.Color)	4290152536 (0xFFB68858)
YUV	144.2820, -27.7470, 33.0787
Hunter-Lab	53.1582, 7.2299, 22.5849

Details

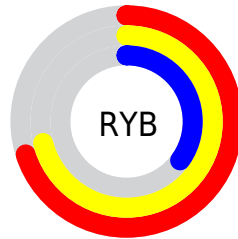
The YUV color **144.2820, -27.7470, 33.0787** is a dark color, and the websafe version is hex **CC9966**. A complement of this color would be **125.7180, 27.7470, -33.0787**, and the grayscale version is **145.0000, 0.0000, 0.0000**.

A 20% lighter version of the original color is **198.5490, -29.3577, 36.3525**, and **92.8300, -25.5522, 29.0901** is the 20% darker color. If you saturate the color by 10%, you get **136.9470, -33.0049, 39.5115**, and if you desaturate by 10%, it is **151.6170, -22.4892, 26.6459**.

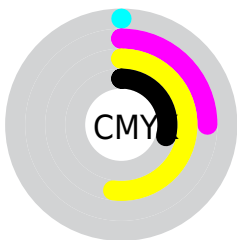
Distribution



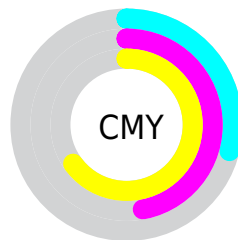
- Red (71%)
- Green (53%)
- Blue (35%)



- Red (70%)
- Yellow (71%)
- Blue (35%)



- Cyan (0%)
- Magenta (25%)
- Yellow (52%)
- Black (29%)



- Cyan (29%)
- Magenta (47%)
- Yellow (65%)

Brightness & Saturation Gradients

These gradients show how the YUV color 144.2820, -27.7470, 33.0787 changes by changing the brightness by 10 percent. The first figure shows a shift by +10% for each color and the second figure -10%.

Similar to the brightness gradients but the following saturation gradients show a change of the YUV color 144.2820, -27.7470, 33.0787 by changing the saturation by 10% instead.

■ 144.2820,
-27.7470, 33.0787

■ 144.2820,
-27.7470, 33.0787

■ 255.0000, 0.0000,
0.0000

■ 118.4990,
-26.8680, 31.1344

■ 198.5490,
-29.3577, 36.3525

■ 92.8300, -25.5522,
29.0901

■ 222.4340,
-28.3150, 28.5604

■ 68.9330, -25.1100,
27.2458

■ 242.6490,
-24.4770, 10.8318

■ 46.1930, -22.7731,
24.3867

■ 251.1240,
-14.8511, 3.3993

■ 26.0920, -12.8634,
19.2133

■ 254.3160, -2.6208,
0.5999

■ 7.4750, -3.6852,
15.3694

■ 0.0000, 0.0000,

0.0000

■ 144.2820,
-27.7470, 33.0787

■ 144.2820,
-27.7470, 33.0787

■ 136.9470,
-33.0049, 39.5115

■ 151.6170,
-22.4892, 26.6459

■ 129.6120,
-38.2627, 45.9443

■ 158.9520,
-17.2313, 20.2131

■ 122.1630,
-43.9574, 52.4770

■ 166.4010,
-11.5367, 13.6803

■ 114.8280,
-49.2152, 58.9098

■ 173.7360, -6.2788,
7.2475

■ 109.0090,
-53.7414, 64.0131

■ 181.0710, -1.0210,
0.8147

■ 187.8190, 4.5262,
-5.1033

■ 195.1540, 9.7841,
-11.5361

■ 202.6030, 15.4787,
-18.0688

■ 209.9380, 20.7366,
-24.5016

Harmonies

Analogous

The Analogous color harmony consists of three colors that are next to each other on the color wheel.



145.9600, -19.2073, 47.3931



144.2820, -27.7470, 33.0787



141.6230, -28.4081, 11.7316

Triad

The Triadic color harmony groups three colors that are evenly spaced from another and form a triangle on the color wheel.



144.2820, -27.7470, 33.0787



122.5280, 15.5157, -76.7621



148.3970, 21.4963, 11.9298

Complementary

The Complementary color scheme is a pair of colors which are on the opposite of each other on the color wheel.



144.2820, -27.7470, 33.0787



125.7180, 27.7470, -33.0787

Split Complementary

Split-complementary colors differ from the complementary color scheme. The scheme consists of three colors, the original color and two neighbors of the complement color.



142.8810, 30.6247, -22.6976



144.2820, -27.7470, 33.0787



114.1950, 33.9209, -100.1490

Square

The Square scheme is like the rectangle color scheme, but the four colors are evenly spaced on the color wheel.



144.2820, -27.7470, 33.0787



132.7590, -4.8112, -43.6386



131.8500, 34.0909, -61.2584



148.8210, 8.4692, 36.9910

Rectangle

The Rectangle color scheme consists of four colors that form a rectangle on the color wheel.



144.2820, -27.7470, 33.0787



139.3650, -23.8439, -5.5821



131.8500, 34.0909, -61.2584



147.2430, 25.0232, 0.6639

Sweetspot

The Sweet Spot groups the original color and five complimentary colors.



144.2820, -27.7470, 33.0787



223.0310, -10.3683, 12.2508



121.4640, 6.6732, 53.0901



111.0350, -6.4263, 7.8623



247.0000, 0.0000, 0.0000



120.0000, 0.0000, 0.0000

Same Dimension

The Same Dimension uses a secret algorithm to generate beautiful new colors.



144.2820, -27.7470, 33.0787



177.9780, -43.3732, 51.7623



171.2840, -41.0590, 9.3979



88.0390, -2.4842, 3.4738



93.0170, -45.8574, 55.2361



16.5900, -8.1789, 10.0066

Inverse Universe

The Inverse Universe completely reimagines the original color for something new.



125.7180, 27.7470, -33.0787



149.0220, 43.3732, -51.7623



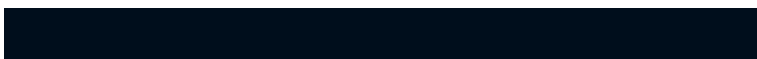
98.7160, 41.0590, -9.3979



86.3740, 2.7736, -2.9590



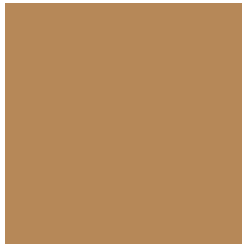
62.3960, 46.1468, -54.7213



11.4100, 8.1789, -10.0066

Previews

White Background



This preview shows how the YUV color 144.2820, -27.7470, 33.0787 looks on a white background.

Color Contrast Check

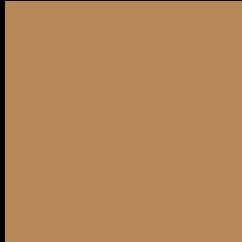
Large Text (above 18pt) WCAG AA ✓ Pass

Any Text WCAG AA × Fail

Large Text (above 18pt) WCAG AAA × Fail

Any Text WCAG AAA × Fail

Black Background



This preview shows how the YUV color 144.2820, -27.7470, 33.0787 looks on a black background.

Color Contrast Check

Large Text (above 18pt) WCAG AA ✓ Pass

Any Text WCAG AA ✓ Pass

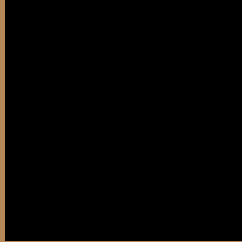
Large Text (above 18pt) WCAG AAA ✓ Pass

Any Text WCAG AAA × Fail

If you want to check with other color combinations, try the [Color Contrast Checker](#).

YUV 144.2820, -27.7470, 33.0787

Background



This preview shows how black text looks on a background with the YUV color 144.2820, -27.7470, 33.0787.



This preview shows how white text looks on a background with the YUV color 144.2820, -27.7470,

Color Blindness Simulation

Color vision deficiency is a very complex topic, and I could not describe the different causes any better than Wikipedia does, so if you want to learn more, you should check out their [article about color blindness](#).

Dichromacy



Original Color

144.2820, -27.7470, 33.0787

Protanopia

142.7310, -25.5034, 13.3909

Deuteranopia

144.1350, -28.1676, 27.9456



Tritanopia

147.8840, -3.8868, 33.4277

Trichromacy



Original Color

144.2820, -27.7470, 33.0787

Protanomaly

143.5470, -26.3987, 20.5683

Deuteranomaly

144.1460, -28.1730, 29.6900

Tritanomaly

146.5930, -12.6173, 33.6829

Monochromacy



Original Color

144.2820, -27.7470, 33.0787

Achromatopsia

144.0000, 0.0000, 0.0000

Achromatomaly

144.1450, -9.9315, 12.1508

CSS Examples

Text

The CSS property to change the color of the text to YUV 144.2820, -27.7470, 33.0787 is called "color". The color property can be set on classes, ids or directly on the HTML element.

This example shows how text in the color `rgb(182, 136, 88)` looks like.

```
.text, #text, p{  
    color:rgb(182, 136, 88)  
}
```

If you want to add a text shadow in that color use the text-shadow property, you can generate a text shadow directly with our [CSS Text Shadow Generator](#).

Here you see how black text with a 4 pixel rgb(182, 136, 88) colored shadow looks like.

```
.shadow{ text-shadow: 4px 4px 2px rgb(182, 136, 88) }
```

Border

The CSS property to change the border of an element to YUV 144.2820, -27.7470, 33.0787 is called "border".

The border property can be set on classes, ids or directly on the HTML element.

This example shows the color as border, it can be applied via the CSS property "border" or "border-color".

```
.border, #border, table{ border:4px solid rgb(182, 136, 88) }
```


If only the border color should be changed use the property border-color.

```
.border{ border-color:rgb(182, 136, 88) }
```

If you want to add a box shadow in that color use:

Here you see how a box with a 4 pixel rgb(182, 136, 88) colored shadow looks like.

```
.boxshadow{ -moz-box-shadow:4px 4px 4px  
4px rgb(182, 136, 88); -webkit-box-  
shadow:4px 4px 4px 4px rgb(182, 136, 88);  
box-shadow:4px 4px 4px 4px rgb(182, 136,  
88) }
```

Background

The CSS property to change the background color of an element to YUV 144.2820, -27.7470, 33.0787 is called "background". The background property can be set on classes, ids or directly on the HTML element.

```
.background, #background, body{  
background: rgb(182, 136, 88) }
```

If only the background color should be changed can be used:

```
.background{ background-color: rgb(182,  
136, 88) }
```

This example shows the color as background, it is applied via the CSS property "background".

To optimize and compress your CSS code, you can use our [online CSS compressor and optimizer](#) based on csstidy. If you want to create a linear or radial gradient as background or border, check our [CSS Gradient Generator](#).

Hey! You found this booklet interesting? Support Converting Colors with the new Membership Option!

The pro membership hides all ads, plus gives you double the colors in the color bucket, and more awesome pro features!

[Learn more, Memberships starting at \\$2.50/m!](#)

**Follow me
on Twitter!**

@ConvertingColor