

Converting Colors

YUV(144.4030, -14.4957,
29.4646)

Have a look what the booklet for
YUV(144.4030, -14.4957, 29.4646)
contains.

YUV(144.4030, -14.4957, 29.4646)	3
<i>Conversions</i>	4
<i>Details</i>	6
<i>Harmonies</i>	12
<i>Previews</i>	24
<i>Color Blindness Simulation</i>	28
<i>CSS Examples</i>	31

Color

**YUV(144.4030, -14.4957,
29.4646)**

Conversions

Conversions Part 1

Format	Color
Hex	B28573
RGB	178, 133, 115
RGB Percent	70%, 52%, 45%
CMY	0.3020, 0.4784, 0.5490
CMYK	0.00, 0.25, 0.35, 0.30
HSL	17°, 29%, 57%
HSV	17°, 35%, 70%
XYZ	29.8421, 27.4778, 19.9506
YIQ	144.4030, 32.5980, 3.9420

Conversions

Conversions Part 2

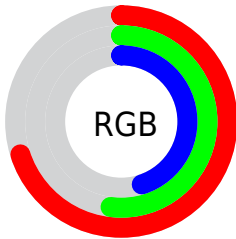
Format	Color
R_{YB}	178, 140, 115
Decimal	11699571
CIE _{Lab}	59.41, 14.77, 16.43
CIE _{LCh}	59, 22.094, 48.036
Yxy	27.4778, 0.3862, 0.3556
Android (android.graphics.Color)	4289889651 (0xFFB28573)
YUV	144.4030, -14.4957, 29.4646
Hunter-Lab	52.4193, 9.8857, 14.1280

Details

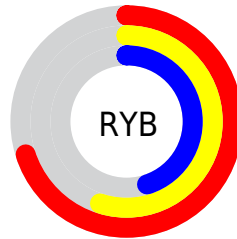
The YUV color $144.4030, -14.4957, 29.4646$ is a dark color, and the websafe version is hex $CC9999$. A complement of this color would be $148.5970, 14.4957, -29.4646$, and the grayscale version is $145.0000, 0.0000, 0.0000$.

A 20% lighter version of the original color is $198.4850, -15.5221, 32.0237$, and $93.4350, -13.0325, 26.8055$ is the 20% darker color. If you saturate the color by 10%, you get $134.7200, -18.5960, 37.9566$, and if you desaturate by 10%, it is $154.0860, -10.3954, 20.9726$.

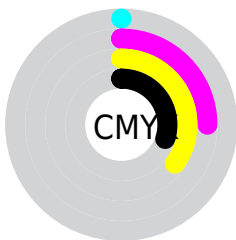
Distribution



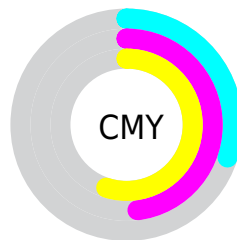
- Red (70%)
- Green (52%)
- Blue (45%)



- Red (70%)
- Yellow (55%)
- Blue (45%)



- Cyan (0%)
- Magenta (25%)
- Yellow (35%)
- Black (30%)



- Cyan (30%)
- Magenta (48%)
- Yellow (55%)

Brightness & Saturation Gradients

These gradients show how the YUV color 144.4030, -14.4957, 29.4646 changes by changing the brightness by 10 percent. The first figure shows a shift by +10% for each color and the second figure -10%.

Similar to the brightness gradients but the following saturation gradients show a change of the YUV color 144.4030, -14.4957, 29.4646 by changing the saturation by 10% instead.

■ 144.4030,
-14.4957, 29.4646

■ 144.4030,
-14.4957, 29.4646

■ 255.0000, 0.0000,
0.0000

■ 118.8050,
-14.2009, 28.2350

■ 198.4850,
-15.5221, 32.0237

■ 93.4350, -13.0325,
26.8055

■ 223.9790,
-14.7796, 27.2054

■ 69.6520, -12.1534,
24.8612

■ 243.6070,
-10.6523, 9.9917

■ 46.8690, -11.2744,
22.9169

■ 254.5440, -1.7472,
0.3999

■ 24.6300, -12.1426,
21.3725

■ 7.5890, -3.2484,
15.2694

■ 0.0000, 0.0000,

0.0000

■ 144.4030,
-14.4957, 29.4646

■ 144.4030,
-14.4957, 29.4646

■ 134.7200,
-18.5960, 37.9566

■ 154.0860,
-10.3954, 20.9726

■ 125.6240,
-22.9856, 45.9338

■ 163.1820, -6.0057,
12.9954

■ 116.0550,
-26.6491, 54.3258

■ 172.7510, -2.3422,
4.6034

■ 106.3720,
-30.7494, 62.8178

■ 182.4340, 1.7580,
-3.8886

■ 96.6890, -34.8497,
71.3097

■ 192.1170, 5.8583,
-12.3806

■ 87.5930, -39.2393,
79.2869

■ 201.2130, 10.2480,
-20.3578

■ 83.1590, -40.9974,
83.1756

■ 210.8960, 14.3483,
-28.8498

■ 220.2370, 17.1382,
-37.0418

■ 227.2810, 13.6655,
-43.2194

Harmonies

Analogous

The Analogous color harmony consists of three colors that are next to each other on the color wheel.



145.4880, -6.6496, 32.8980



144.4030, -14.4957, 29.4646



142.8980, -18.6837, 19.3835

Triad

The Triadic color harmony groups three colors that are evenly spaced from another and form a triangle on the color wheel.



144.4030, -14.4957, 29.4646



135.5850, -0.7814, -29.4540



143.9510, 17.7722, -6.9730

Complementary

The Complementary color scheme is a pair of colors which are on the opposite of each other on the color wheel.



144.4030, -14.4957, 29.4646



148.5970, 14.4957, -29.4646

Split Complementary

Split-complementary colors differ from the complementary color scheme. The scheme consists of three colors, the original color and two neighbors of the complement color.



139.5140, 20.4526, -26.7608



144.4030, -14.4957, 29.4646



133.9670, 9.8763, -41.1901

Square

The Square scheme is like the rectangle color scheme, but the four colors are evenly spaced on the color wheel.



144.4030, -14.4957, 29.4646



138.7520, -10.7237, -13.8145



135.3290, 17.5858, -40.6305



145.7640, 11.4553, 12.4850

Rectangle

The Rectangle color scheme consists of four colors that form a rectangle on the color wheel.



144.4030, -14.4957, 29.4646



141.3590, -17.9250, 9.3322



135.3290, 17.5858, -40.6305



142.5480, 18.9568, -13.6356

Sweetspot

The Sweet Spot groups the original color and five complimentary colors.



144.4030, -14.4957, 29.4646



218.5840, -5.7109, 11.7658



138.9670, 10.3693, 34.2319



108.8330, -3.3687, 7.1625



245.0000, 0.0000, 0.0000



117.0000, 0.0000, 0.0000

Same Dimension

The Same Dimension uses a secret algorithm to generate beautiful new colors.



144.4030, -14.4957, 29.4646



179.8520, -22.1120, 45.7338



162.6000, -23.4668, 13.5058



84.4520, -2.1948, 3.9886



71.5750, -35.2865, 71.4097



11.8830, -5.8583, 12.3806

Inverse Universe

The Inverse Universe completely reimagines the original color for something new.



148.5970, 14.4957, -29.4646



186.5610, 22.4014, -45.2190



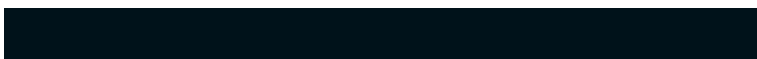
130.4000, 23.4668, -13.5058



85.1350, 1.9054, -4.5034



81.4250, 35.2865, -71.4097



13.5300, 6.1477, -11.8658

Previews

White Background



This preview shows how the YUV color 144.4030, -14.4957, 29.4646 looks on a white background.

Color Contrast Check

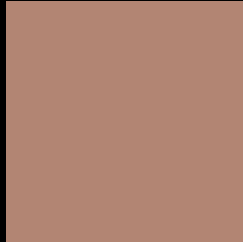
Large Text (above 18pt) WCAG AA ✓ Pass

Any Text WCAG AA × Fail

Large Text (above 18pt) WCAG AAA × Fail

Any Text WCAG AAA × Fail

Black Background



This preview shows how the YUV color 144.4030, -14.4957, 29.4646 looks on a black background.

Color Contrast Check

Large Text (above 18pt) WCAG AA ✓ Pass

Any Text WCAG AA ✓ Pass

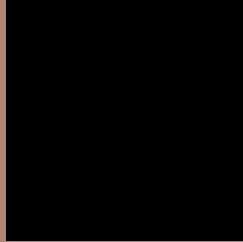
Large Text (above 18pt) WCAG AAA ✓ Pass

Any Text WCAG AAA × Fail

If you want to check with other color combinations, try the [Color Contrast Checker](#).

YUV 144.4030, -14.4957, 29.4646

Background



This preview shows how black text looks on a background with the YUV color 144.4030, -14.4957, 29.4646.



This preview shows how white text looks on a background with the YUV color 144.4030, -14.4957, 29.4646.

Color Blindness Simulation

Color vision deficiency is a very complex topic, and I could not describe the different causes any better than Wikipedia does, so if you want to learn more, you should check out their [article about color blindness](#).

Dichromacy



Original Color

144.4030, -14.4957, 29.4646

Protanopia

142.7700, -11.2256, 7.2177

Deuteranopia

143.9350, -14.7580, 20.2280



Tritanopia

145.9760, -3.4392, 29.8390

Trichromacy



Original Color

144.4030, -14.4957, 29.4646

Protanomaly

143.1840, -12.4157, 15.6246

Deuteranomaly

143.9570, -14.7688, 23.7167

Tritanomaly

145.2380, -7.5123, 29.6093

Monochromacy



Original Color

144.4030, -14.4957, 29.4646

Achromatopsia

144.0000, 0.0000, 0.0000

Achromatomaly

143.9860, -5.4161, 10.5363

CSS Examples

Text

The CSS property to change the color of the text to YUV 144.4030, -14.4957, 29.4646 is called "color". The color property can be set on classes, ids or directly on the HTML element.

This example shows how text in the color `rgb(178, 133, 115)` looks like.

```
.text, #text, p{  
    color:rgb(178, 133, 115)  
}
```

If you want to add a text shadow in that color use the text-shadow property, you can generate a text shadow directly with our [CSS Text Shadow Generator](#).

Here you see how black text with a 4 pixel rgb(178, 133, 115) colored shadow looks like.

```
.shadow{ text-shadow: 4px 4px 2px rgb(178, 133, 115) }
```

Border

The CSS property to change the border of an element to YUV 144.4030, -14.4957, 29.4646 is called "border".

The border property can be set on classes, ids or directly on the HTML element.

This example shows the color as border, it can be applied via the CSS property "border" or "border-color".

```
.border, #border, table{ border:4px solid rgb(178, 133, 115) }
```


If only the border color should be changed use the property `border-color`.

```
.border{ border-color:rgb(178, 133, 115) }
```

If you want to add a box shadow in that color use:

Here you see how a box with a 4 pixel `rgb(178, 133, 115)` colored shadow looks like.

```
.boxshadow{ -moz-box-shadow:4px 4px 4px  
4px rgb(178, 133, 115); -webkit-box-  
shadow:4px 4px 4px 4px rgb(178, 133, 115);  
box-shadow:4px 4px 4px 4px rgb(178, 133,  
115) }
```

Background

The CSS property to change the background color of an element to YUV 144.4030, -14.4957, 29.4646 is called "background". The background property can be set on classes, ids or directly on the HTML element.

```
.background, #background, body{  
background: rgb(178, 133, 115) }
```

If only the background color should be changed can be used:

```
.background{ background-color: rgb(178,  
133, 115) }
```

This example shows the color as background, it is applied via the CSS property "background".

To optimize and compress your CSS code, you can use our [online CSS compressor and optimizer](#) based on csstidy. If you want to create a linear or radial gradient as background or border, check our [CSS Gradient Generator](#).

Hey! You found this booklet interesting? Support Converting Colors with the new Membership Option!

The pro membership hides all ads, plus gives you double the colors in the color bucket, and more awesome pro features!

[Learn more, Memberships starting at \\$2.50/m!](#)

**Follow me
on Twitter!**

@ConvertingColor