

# Converting Colors

YUV(144.4590, -5.6493,  
85.5435)

Have a look what the booklet for  
YUV(144.4590, -5.6493, 85.5435)  
contains.

<b>YUV(144.4590, -5.6493, 85.5435)</b> .....	3
<b><i>Conversions</i></b> .....	4
<b><i>Details</i></b> .....	6
<b><i>Harmonies</i></b> .....	12
<b><i>Previews</i></b> .....	24
<b><i>Color Blindness Simulation</i></b> .....	28
<b><i>CSS Examples</i></b> .....	31

# Color

**YUV(144.4590, -5.6493,  
85.5435)**

# Conversions

## Conversions Part 1

<b>Format</b>	<b>Color</b>
Hex	F26185
RGB	242, 97, 133
RGB Percent	95%, 38%, 52%
CMY	0.0510, 0.6196, 0.4784
CMYK	0.00, 0.60, 0.45, 0.05
HSL	345°, 85%, 66%
HSV	345°, 60%, 95%
XYZ	45.1263, 29.1201, 25.4326
YIQ	144.4590, 74.8640, 41.9360

# Conversions

## Conversions Part 2

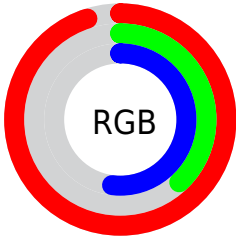
<b>Format</b>	<b>Color</b>
R <sub>Y</sub> B	242, 97, 133
Decimal	15884677
CIE Lab	60.89, 58.65, 9.39
CIE LCh	61, 59.398, 9.100
Yxy	29.1201, 0.4527, 0.2921
Android (android.graphics.Color)	4294074757 (0xFFFF26185)
YUV	144.4590, -5.6493, 85.5435
Hunter-Lab	53.9630, 54.8343, 9.8309

# Details

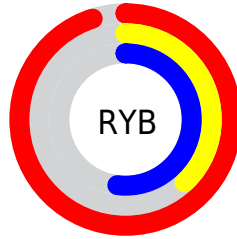
The YUV color **144.4590, -5.6493, 85.5435** is a light color, and the websafe version is hex **FF6699**. A complement of this color would be **194.5410, 5.6493, -85.5435**, and the grayscale version is **144.0000, 0.0000, 0.0000**.

A 20% lighter version of the original color is **187.2600, -0.6212, 59.4080**, and **85.4140, -0.6971, 83.8289** is the 20% darker color. If you saturate the color by 10%, you get **128.3190, -6.5663, 99.6982**, and if you desaturate by 10%, it is **160.5990, -4.7323, 71.3887**.

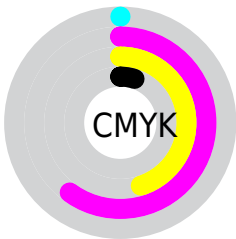
# Distribution



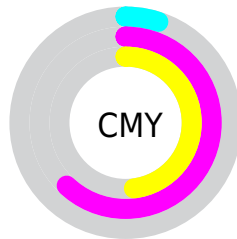
- Red (95%)
- Green (38%)
- Blue (52%)



- Red (95%)
- Yellow (38%)
- Blue (52%)



- Cyan (0%)
- Magenta (60%)
- Yellow (45%)
- Black (5%)



- Cyan (5%)
- Magenta (62%)
- Yellow (48%)

# Brightness & Saturation Gradients

These gradients show how the YUV color 144.4590, -5.6493, 85.5435 changes by changing the brightness by 10 percent. The first figure shows a shift by +10% for each color and the second figure -10%.

Similar to the brightness gradients but the following saturation gradients show a change of the YUV color 144.4590, -5.6493, 85.5435 by changing the saturation by 10% instead.



144.4590, -5.6493,  
85.5435

144.4590, -5.6493,  
85.5435

255.0000, 0.0000,  
0.0000

115.3170, -3.6073,  
83.9140

187.2600, -0.6212,  
59.4080

85.4140, -0.6971,  
83.8289

207.4750, 3.2168,  
41.6794

52.1030, 4.3862,  
86.7327

227.6900, 7.0548,  
23.9509

40.9240, -0.9485,  
71.1037

246.1950, 4.3409,  
7.7220

29.9730, -5.4097,  
55.2747

20.0760, -8.4185,  
40.2753

9.9810, -4.4276,

20.1877

■ 0.0000, 0.0000,  
0.0000

■ 144.4590, -5.6493,  
85.5435

■ 144.4590, -5.6493,  
85.5435

■ 128.3190, -6.5663,  
99.6982

■ 160.5990, -4.7323,  
71.3887

■ 112.1790, -7.4832,  
113.8530

■ 176.7390, -3.8153,  
57.2339

■ 95.3380, -8.5476,  
128.6226

■ 193.5800, -2.7509,  
42.4643

■ 79.1980, -9.4646,  
142.7774

■ 209.7200, -1.8340,  
28.3096

■ 225.8600, -0.9170,  
14.1548

■ 242.0000, 0.0000,  
0.0000

■ 251.1130, 1.9163,  
-7.9921

# Harmonies

## Analogous

The Analogous color harmony consists of three colors that are next to each other on the color wheel.



149.1030, 17.6972, 63.9307



144.4590, -5.6493, 85.5435



143.9980, -30.0720, 78.9318

# Triad

The Triadic color harmony groups three colors that are evenly spaced from another and form a triangle on the color wheel.



144.4590, -5.6493, 85.5435



132.6170, -36.2932, -25.9741



123.6110, 59.8448, -108.4068

# Complementary

The Complementary color scheme is a pair of colors which are on the opposite of each other on the color wheel.



144.4590, -5.6493, 85.5435



194.5410, 5.6493, -85.5435

# Split Complementary

Split-complementary colors differ from the complementary color scheme. The scheme consists of three colors, the original color and two neighbors of the complement color.



123.9580, 43.4047, -108.7112



144.4590, -5.6493, 85.5435



111.4010, -2.1697, -97.6987

# Square

The Square scheme is like the rectangle color scheme, but the four colors are evenly spaced on the color wheel.



144.4590, -5.6493, 85.5435



138.4240, -53.4530, 18.0452



119.4320, 20.9860, -104.7419



134.9250, 57.2250, -61.3242



# Rectangle

The Rectangle color scheme consists of four colors that form a rectangle on the color wheel.



144.4590, -5.6493, 85.5435



143.6420, -43.7005, 63.4580



119.4320, 20.9860, -104.7419



124.3460, 55.0454, -109.0514

# Sweetspot

The Sweet Spot groups the original color and five complimentary colors.



144.4590, -5.6493, 85.5435



224.0080, -1.9759, 27.1800



146.1210, 47.2683, 52.5139



108.4690, -1.2172, 17.1287



0.0000, 0.0000, 0.0000



128.0000, 0.0000, 0.0000



# Same Dimension

The Same Dimension uses a secret algorithm to generate beautiful new colors.



144.4590, -5.6493, 85.5435



131.2600, -7.0302, 108.5200



161.4870, -31.7921, 70.6099



111.9300, -0.4585, 7.0774



60.2600, -7.0302, 108.5200



18.3400, -2.1396, 33.0278



# Inverse Universe

The Inverse Universe completely reimagines the original color for something new.



144.4590, -5.6493, 85.5435



131.2600, -7.0302, 108.5200



177.5130, 31.7921, -70.6099



111.9300, -0.4585, 7.0774



60.2600, -7.0302, 108.5200



18.3400, -2.1396, 33.0278



# Previews

## White Background



This preview shows how the YUV color 144.4590, -5.6493, 85.5435 looks on a white background.

## Color Contrast Check

Large Text (above 18pt) WCAG AA ✓ Pass

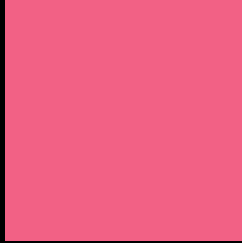
Any Text WCAG AA ✗ Fail

Large Text (above 18pt) WCAG AAA ✗ Fail

Any Text WCAG AAA ✗ Fail



# Black Background



This preview shows how the YUV color 144.4590, -5.6493, 85.5435 looks on a black background.

## Color Contrast Check

Large Text (above 18pt) WCAG AA ✓ Pass

Any Text WCAG AA ✓ Pass

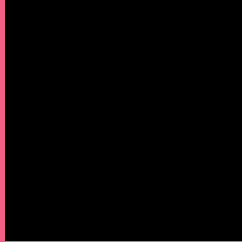
Large Text (above 18pt) WCAG AAA ✓ Pass

Any Text WCAG AAA × Fail

If you want to check with other color combinations, try the [Color Contrast Checker](#).

# YUV 144.4590, -5.6493, 85.5435

## Background



This preview shows how black text looks on a background with the YUV color 144.4590, -5.6493, 85.5435.



This preview shows how white text looks on a background with the YUV color 144.4590, -5.6493,

85.5435.

# Color Blindness Simulation

Color vision deficiency is a very complex topic, and I could not describe the different causes any better than Wikipedia does, so if you want to learn more, you should check out their [article about color blindness](#).

## Dichromacy



### Original Color

144.4590, -5.6493, 85.5435

### Protanopia

147.5960, 6.1152, -1.3997

### Deuteranopia

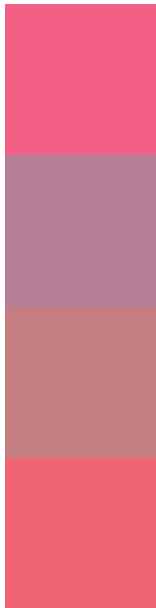
148.2490, -10.9688, 18.1986



## Tritanopia

143.9460, -17.7214, 84.2394

# Trichromacy



## Original Color

144.4590, -5.6493, 85.5435

## Protanomaly

146.3550, 1.7970, 30.3837

## Deuteranomaly

147.2720, -9.0081, 42.7345

## Tritanomaly

144.0970, -13.3588, 84.9839

# Monochromacy



## Original Color

144.4590, -5.6493, 85.5435

## Achromatopsia

144.0000, 0.0000, 0.0000

## Achromatomaly

144.3290, -2.1342, 31.2835

# CSS Examples

## Text

The CSS property to change the color of the text to YUV 144.4590, -5.6493, 85.5435 is called "color". The color property can be set on classes, ids or directly on the HTML element.

This example shows how text in the color `rgb(242, 97, 133)` looks like.

```
.text, #text, p{  
    color:rgb(242, 97, 133)  
}
```

If you want to add a text shadow in that color use the text-shadow property, you can generate a text shadow directly with our [CSS Text Shadow Generator](#).

Here you see how black text with a 4 pixel rgb(242, 97, 133) colored shadow looks like.

```
.shadow{ text-shadow: 4px 4px 2px rgb(242, 97, 133) }
```

## Border

The CSS property to change the border of an element to YUV 144.4590, -5.6493, 85.5435 is called "border". The border property can be set on classes, ids or directly on the HTML element.

This example shows the color as border, it can be applied via the CSS property "border" or "border-color".

```
.border, #border, table{ border:4px solid rgb(242, 97, 133) }
```



If only the border color should be changed use the property border-color.

```
.border{ border-color:rgb(242, 97, 133) }
```

If you want to add a box shadow in that color use:

Here you see how a box with a 4 pixel rgb(242, 97, 133) colored shadow looks like.

```
.boxshadow{ -moz-box-shadow:4px 4px 4px  
4px rgb(242, 97, 133); -webkit-box-  
shadow:4px 4px 4px 4px rgb(242, 97, 133);  
box-shadow:4px 4px 4px 4px rgb(242, 97,  
133) }
```

# Background

The CSS property to change the background color of an element to YUV 144.4590, -5.6493, 85.5435 is called "background". The background property can be set on classes, ids or directly on the HTML element.

```
.background, #background, body{  
background: rgb(242, 97, 133) }
```

If only the background color should be changed can be used:

```
.background{ background-color: rgb(242, 97,  
133) }
```

This example shows the color as background, it is applied via the CSS property "background".

To optimize and compress your CSS code, you can use our [online CSS compressor and optimizer](#) based on csstidy. If you want to create a linear or radial gradient as background or border, check our [CSS Gradient Generator](#).

Hey! You found this booklet interesting? Support Converting Colors with the new Membership Option!

The pro membership hides all ads, plus gives you double the colors in the color bucket, and more awesome pro features!

**[Learn more, Memberships starting at \\$2.50/m!](#)**

**Follow me  
on Twitter!**

@ConvertingColor