

# Converting Colors

YUV(144.6740, -28.9263,  
37.9969)

Have a look what the booklet for  
YUV(144.6740, -28.9263, 37.9969)  
contains.

<b>YUV(144.6740, -28.9263, 37.9969)</b> .....	3
<b><i>Conversions</i></b> .....	4
<b><i>Details</i></b> .....	6
<b><i>Harmonies</i></b> .....	12
<b><i>Previews</i></b> .....	24
<b><i>Color Blindness Simulation</i></b> .....	28
<b><i>CSS Examples</i></b> .....	31

# Color

**YUV(144.6740, -28.9263,  
37.9969)**

# Conversions

## Conversions Part 1

Format	Color
Hex	BC8656
RGB	188, 134, 86
RGB Percent	74%, 53%, 34%
CMY	0.2627, 0.4745, 0.6627
CMYK	0.00, 0.29, 0.54, 0.26
HSL	28°, 43%, 54%
HSV	28°, 54%, 74%
XYZ	30.9438, 28.4134, 12.6575
YIQ	144.6740, 47.5920, -3.4800

# Conversions

## Conversions Part 2

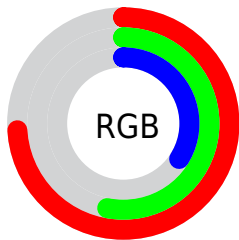
<b>Format</b>	<b>Color</b>
<b>R<sub>YB</sub></b>	188, 177, 86
Decimal	12355158
CIE <sub>Lab</sub>	60.26, 15.26, 33.87
CIE <sub>LCh</sub>	60, 37.151, 65.753
Yxy	28.4134, 0.4297, 0.3945
Android (android.graphics.Color)	4290545238 (0xFFBC8656)
YUV	144.6740, -28.9263, 37.9969
Hunter-Lab	53.3043, 10.3392, 23.2341

# Details

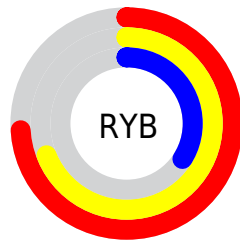
The YUV color **144.6740, -28.9263, 37.9969** is a dark color, and the websafe version is hex **CC9966**. A complement of this color would be **129.3260, 28.9263, -37.9969**, and the grayscale version is **145.0000, 0.0000, 0.0000**.

A 20% lighter version of the original color is **199.2400, -30.6843, 41.8855**, and **93.2220, -26.7314, 34.0083** is the 20% darker color. If you saturate the color by 10%, you get **136.6380, -34.3315, 45.0445**, and if you desaturate by 10%, it is **152.7100, -23.5210, 30.9493**.

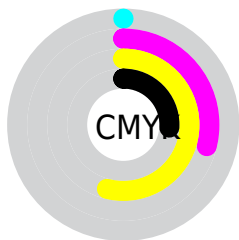
# Distribution



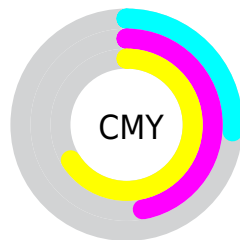
- Red (74%)
- Green (53%)
- Blue (34%)



- Red (74%)
- Yellow (69%)
- Blue (34%)



- Cyan (0%)
- Magenta (29%)
- Yellow (54%)
- Black (26%)



- Cyan (26%)
- Magenta (47%)
- Yellow (66%)

# Brightness & Saturation Gradients

These gradients show how the YUV color 144.6740, -28.9263, 37.9969 changes by changing the brightness by 10 percent. The first figure shows a shift by +10% for each color and the second figure -10%.

Similar to the brightness gradients but the following saturation gradients show a change of the YUV color 144.6740, -28.9263, 37.9969 by changing the saturation by 10% instead.



■ 144.6740,  
-28.9263, 37.9969

■ 144.6740,  
-28.9263, 37.9969

■ 255.0000, 0.0000,  
0.0000

■ 118.8910,  
-28.0473, 36.0526

■ 199.2400,  
-30.6843, 41.8855

■ 93.2220, -26.7314,  
34.0083

■ 221.0320,  
-28.6098, 29.7899

■ 68.7270, -25.9944,  
30.9344

■ 240.5460,  
-24.9192, 12.6762

■ 46.2150, -22.7840,  
27.8754

■ 250.7820,  
-16.1615, 3.6992

■ 26.1140, -12.8742,  
22.7020

■ 254.0880, -3.4944,  
0.7998

■ 8.7850, -3.8380,  
17.7286

■ 0.0000, 0.0000,

0.0000

■ 144.6740,  
-28.9263, 37.9969

■ 144.6740,  
-28.9263, 37.9969

■ 136.6380,  
-34.3315, 45.0445

■ 152.7100,  
-23.5210, 30.9493

■ 128.6020,  
-39.7368, 52.0920

■ 160.7460,  
-18.1158, 23.9018

■ 120.6800,  
-44.7052, 59.0396

■ 168.6680,  
-13.1473, 16.9542

■ 112.6440,  
-50.1105, 66.0872

■ 176.7040, -7.7421,  
9.9066

■ 107.8680,  
-53.1789, 70.2758

■ 184.7400, -2.3368,  
2.8590

■ 192.7760, 3.0684,  
-4.1886

■ 200.8120, 8.4737,  
-11.2361

■ 208.7340, 13.4421,  
-18.1837

■ 216.7700, 18.8474,  
-25.2313

# Harmonies

## Analogous

The Analogous color harmony consists of three colors that are next to each other on the color wheel.



146.5090, -18.4919, 51.2966



144.6740, -28.9263, 37.9969



141.9610, -31.0398, 15.8202

# Triad

The Triadic color harmony groups three colors that are evenly spaced from another and form a triangle on the color wheel.



144.6740, -28.9263, 37.9969



119.1740, 15.6902, -86.0986



148.1730, 24.5647, 7.7413

# Complementary

The Complementary color scheme is a pair of colors which are on the opposite of each other on the color wheel.



144.6740, -28.9263, 37.9969



129.3260, 28.9263, -37.9969

# Split Complementary

Split-complementary colors differ from the complementary color scheme. The scheme consists of three colors, the original color and two neighbors of the complement color.



141.3360, 33.8514, -30.9897



144.6740, -28.9263, 37.9969



115.2550, 32.9053, -101.0786

# Square

The Square scheme is like the rectangle color scheme, but the four colors are evenly spaced on the color wheel.



144.6740, -28.9263, 37.9969



132.3740, -7.5794, -42.4240



124.6950, 39.0974, -80.4165



149.0320, 11.8162, 36.8059



# Rectangle

The Rectangle color scheme consists of four colors that form a rectangle on the color wheel.



144.6740, -28.9263, 37.9969



139.8770, -27.0544, -2.5231



124.6950, 39.0974, -80.4165



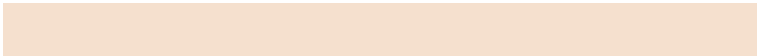
147.3070, 27.9496, -4.6542

# Sweetspot

The Sweet Spot groups the original color and five complimentary colors.



144.6740, -28.9263, 37.9969



228.2270, -10.9579, 14.7099



122.6540, 8.5516, 57.3084



112.3340, -6.5737, 8.4771



250.0000, 0.0000, 0.0000



122.0000, 0.0000, 0.0000



# Same Dimension

The Same Dimension uses a secret algorithm to generate beautiful new colors.



144.6740, -28.9263, 37.9969



177.5660, -45.1420, 59.1396



174.6110, -43.6852, 11.7422



90.0390, -2.4842, 3.4738



90.6800, -44.7052, 59.0396



17.4870, -8.6211, 11.8509



# Inverse Universe

The Inverse Universe completely reimagines the original color for something new.



129.3260, 28.9263, -37.9969



153.4340, 45.1420, -59.1396



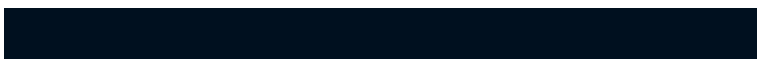
99.3890, 43.6852, -11.7422



88.9610, 2.4842, -3.4738



67.3200, 44.7052, -59.0396

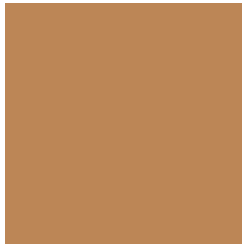


12.9260, 8.9105, -11.3361



# Previews

## White Background



This preview shows how the YUV color 144.6740, -28.9263, 37.9969 looks on a white background.

## Color Contrast Check

Large Text (above 18pt) WCAG AA ✓ Pass

Any Text WCAG AA × Fail

Large Text (above 18pt) WCAG AAA × Fail

Any Text WCAG AAA × Fail



# Black Background



This preview shows how the YUV color 144.6740, -28.9263, 37.9969 looks on a black background.

## Color Contrast Check

Large Text (above 18pt) WCAG AA ✓ Pass

Any Text WCAG AA ✓ Pass

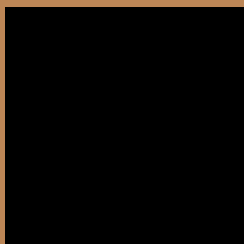
Large Text (above 18pt) WCAG AAA ✓ Pass

Any Text WCAG AAA × Fail

If you want to check with other color combinations, try the [Color Contrast Checker](#).

# YUV 144.6740, -28.9263, 37.9969

## Background



This preview shows how black text looks on a background with the YUV color 144.6740, -28.9263, 37.9969.



This preview shows how white text looks on a background with the YUV color 144.6740, -28.9263, 37.9969.

37.9969.

# Color Blindness Simulation

Color vision deficiency is a very complex topic, and I could not describe the different causes any better than Wikipedia does, so if you want to learn more, you should check out their [article about color blindness](#).

## Dichromacy



### Original Color

144.6740, -28.9263, 37.9969

### Protanopia

143.5030, -26.3770, 13.5909

### Deuteranopia

144.2060, -29.1886, 28.7603



## Tritanopia

148.1620, -5.5029, 38.4459

# Trichromacy



## Original Color

144.6740, -28.9263, 37.9969

## Protanomaly

144.3300, -27.2777, 22.5126

## Deuteranomaly

144.2280, -29.1994, 32.2490

## Tritanomaly

146.8710, -14.2334, 38.7011

# Monochromacy



## Original Color

144.6740, -28.9263, 37.9969

## Achromatopsia

145.0000, 0.0000, 0.0000

## Achromatomaly

145.0420, -10.3737, 13.9952

# CSS Examples

## Text

The CSS property to change the color of the text to YUV 144.6740, -28.9263, 37.9969 is called "color". The color property can be set on classes, ids or directly on the HTML element.

This example shows how text in the color `rgb(188, 134, 86)` looks like.

```
.text, #text, p{  
    color:rgb(188, 134, 86)  
}
```

If you want to add a text shadow in that color use the text-shadow property, you can generate a text shadow directly with our [CSS Text Shadow Generator](#).

Here you see how black text with a 4 pixel rgb(188, 134, 86) colored shadow looks like.

```
.shadow{ text-shadow: 4px 4px 2px rgb(188, 134, 86) }
```

## Border

The CSS property to change the border of an element to YUV 144.6740, -28.9263, 37.9969 is called "border".

The border property can be set on classes, ids or directly on the HTML element.

This example shows the color as border, it can be applied via the CSS property "border" or "border-color".

```
.border, #border, table{ border:4px solid rgb(188, 134, 86) }
```



If only the border color should be changed use the property `border-color`.

```
.border{ border-color:rgb(188, 134, 86) }
```

If you want to add a box shadow in that color use:

Here you see how a box with a 4 pixel `rgb(188, 134, 86)` colored shadow looks like.

```
.boxshadow{ -moz-box-shadow:4px 4px 4px  
4px rgb(188, 134, 86); -webkit-box-  
shadow:4px 4px 4px 4px rgb(188, 134, 86);  
box-shadow:4px 4px 4px 4px rgb(188, 134,  
86) }
```

# Background

The CSS property to change the background color of an element to YUV 144.6740, -28.9263, 37.9969 is called "background". The background property can be set on classes, ids or directly on the HTML element.

```
.background, #background, body{  
background: rgb(188, 134, 86) }
```

If only the background color should be changed can be used:

```
.background{ background-color: rgb(188,  
134, 86) }
```

This example shows the color as background, it is applied via the CSS property "background".

To optimize and compress your CSS code, you can use our [online CSS compressor and optimizer](#) based on csstidy. If you want to create a linear or radial gradient as background or border, check our [CSS Gradient Generator](#).

Hey! You found this booklet interesting? Support Converting Colors with the new Membership Option!

The pro membership hides all ads, plus gives you double the colors in the color bucket, and more awesome pro features!

**[Learn more, Memberships starting at \\$2.50/m!](#)**

**Follow me  
on Twitter!**

@ConvertingColor