

Converting Colors

YUV(145.1410, -13.8735,
16.5393)

Have a look what the booklet for
YUV(145.1410, -13.8735, 16.5393)
contains.

YUV(145.1410, -13.8735, 16.5393)	3
<i>Conversions</i>	4
<i>Details</i>	6
<i>Harmonies</i>	12
<i>Previews</i>	24
<i>Color Blindness Simulation</i>	28
<i>CSS Examples</i>	31

Color

**YUV(145.1410, -13.8735,
16.5393)**

Conversions

Conversions Part 1

Format	Color
Hex	A48D75
RGB	164, 141, 117
RGB Percent	64%, 55%, 46%
CMY	0.3569, 0.4471, 0.5412
CMYK	0.00, 0.14, 0.29, 0.36
HSL	31°, 21%, 55%
HSV	31°, 29%, 64%
XYZ	28.0456, 28.2266, 20.7997
YIQ	145.1410, 21.4120, -2.5880

Conversions

Conversions Part 2

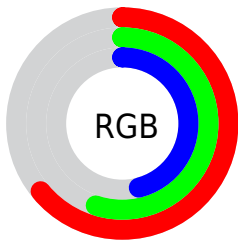
Format	Color
R_{YB}	162, 164, 117
Decimal	10784117
CIE _{Lab}	60.09, 4.89, 16.01
CIE _{LCh}	60, 16.739, 73.027
Yxy	28.2266, 0.3639, 0.3662
Android (android.graphics.Color)	4288974197 (0xFFA48D75)
YUV	145.1410, -13.8735, 16.5393
Hunter-Lab	53.1287, 1.2513, 13.9783

Details

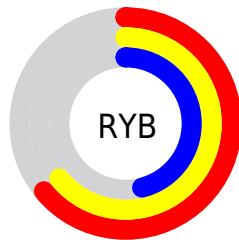
The YUV color $145.1410, -13.8735, 16.5393$ is a dark color, and the websafe version is hex 999999 . A complement of this color would be $135.8590, 13.8735, -16.5393$, and the grayscale version is $145.0000, 0.0000, 0.0000$.

A 20% lighter version of the original color is $199.5110, -15.0419, 17.9689$, and $94.4720, -12.5577, 14.4951$ is the 20% darker color. If you saturate the color by 10%, you get $138.6210, -18.5472, 22.2574$, and if you desaturate by 10%, it is $151.6610, -9.1999, 10.8213$.

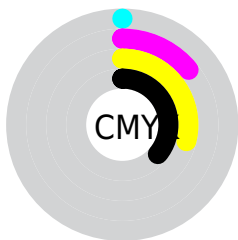
Distribution



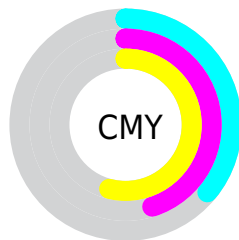
- Red (64%)
- Green (55%)
- Blue (46%)



- Red (64%)
- Yellow (64%)
- Blue (46%)



- Cyan (0%)
- Magenta (14%)
- Yellow (29%)
- Black (36%)



- Cyan (36%)
- Magenta (45%)
- Yellow (54%)

Brightness & Saturation Gradients

These gradients show how the YUV color 145.1410, -13.8735, 16.5393 changes by changing the brightness by 10 percent. The first figure shows a shift by +10% for each color and the second figure -10%.

Similar to the brightness gradients but the following saturation gradients show a change of the YUV color 145.1410, -13.8735, 16.5393 by changing the saturation by 10% instead.

■ 145.1410,
-13.8735, 16.5393

■ 145.1410,
-13.8735, 16.5393

255.0000, 0.0000,
0.0000

■ 118.9560,
-13.2893, 15.8246

■ 199.5110,
-15.0419, 17.9689

■ 94.4720, -12.5577,
14.4951

■ 226.8100,
-15.1893, 18.5836

■ 70.8740, -12.2629,
13.2655

■ 249.1180,
-12.3832, 5.1585

■ 47.8030, -11.2419,
12.4508

254.7720, -0.8736,
0.2000

■ 26.9340, -13.2785,
12.3359

■ 3.8870, -1.9163,
7.9921

■ 0.0000, 0.0000,

0.0000

■ 145.1410,
-13.8735, 16.5393

■ 145.1410,
-13.8735, 16.5393

■ 138.6210,
-18.5472, 22.2574

■ 151.6610, -9.1999,
10.8213

■ 131.9870,
-23.6576, 28.0754

■ 158.2950, -4.0894,
5.0033

■ 125.4670,
-28.3312, 33.7934

■ 164.8150, 0.5842,
-0.7148

■ 118.8330,
-33.4417, 39.6115

■ 171.4490, 5.6946,
-6.5328

■ 112.3130,
-38.1153, 45.3295

■ 177.9690, 10.3683,
-12.2508

■ 105.7930,
-42.7889, 51.0475

■ 184.4890, 15.0419,
-17.9689

■ 99.1590, -47.8994,
56.8656

■ 191.1230, 20.1524,
-23.7869

■ 98.3440, -48.4836,
57.5803

■ 197.6430, 24.8260,
-29.5049

■ 203.1370, 25.5685,
-34.3231

Harmonies

Analogous

The Analogous color harmony consists of three colors that are next to each other on the color wheel.



146.3960, -10.5482, 23.3317



145.1410, -13.8735, 16.5393



143.7760, -13.6936, 5.4584

Triad

The Triadic color harmony groups three colors that are evenly spaced from another and form a triangle on the color wheel.



145.1410, -13.8735, 16.5393



138.7190, 6.0545, -28.6946



146.8620, 9.4350, 7.1370

Complementary

The Complementary color scheme is a pair of colors which are on the opposite of each other on the color wheel.



145.1410, -13.8735, 16.5393



135.8590, 13.8735, -16.5393

Split Complementary

Split-complementary colors differ from the complementary color scheme. The scheme consists of three colors, the original color and two neighbors of the complement color.



144.9140, 13.8464, -7.8176



145.1410, -13.8735, 16.5393



139.6140, 12.0223, -29.4795

Square

The Square scheme is like the rectangle color scheme, but the four colors are evenly spaced on the color wheel.



145.1410, -13.8735, 16.5393



140.2980, -2.1189, -20.4323



142.4670, 15.0528, -21.4576



147.3320, 3.2873, 19.0028

Rectangle

The Rectangle color scheme consists of four colors that form a rectangle on the color wheel.



145.1410, -13.8735, 16.5393



142.4050, -11.0457, -3.8632



142.4670, 15.0528, -21.4576



146.5840, 11.0511, 2.1188

Sweetspot

The Sweet Spot groups the original color and five complimentary colors.



145.1410, -13.8735, 16.5393



206.5510, -5.6946, 6.5328



133.6750, 3.1182, 26.5950



102.1100, -3.5052, 4.2885



235.0000, 0.0000, 0.0000



107.0000, 0.0000, 0.0000

Same Dimension

The Same Dimension uses a secret algorithm to generate beautiful new colors.



145.1410, -13.8735, 16.5393



185.1330, -21.7576, 25.3164



158.6420, -20.5295, 4.6990



78.6260, -2.7736, 2.9590



86.7930, -42.7889, 51.0475



10.6650, -5.2578, 6.4328

Inverse Universe

The Inverse Universe completely reimagines the original color for something new.



135.8590, 13.8735, -16.5393



170.4540, 21.4682, -25.8312



122.3580, 20.5295, -4.6990



76.3740, 2.7736, -2.9590



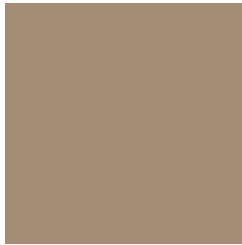
58.2070, 42.7889, -51.0475



7.3350, 5.2578, -6.4328

Previews

White Background



This preview shows how the YUV color 145.1410, -13.8735, 16.5393 looks on a white background.

Color Contrast Check

Large Text (above 18pt) WCAG AA ✓ Pass

Any Text WCAG AA × Fail

Large Text (above 18pt) WCAG AAA × Fail

Any Text WCAG AAA × Fail

Black Background



This preview shows how the YUV color 145.1410, -13.8735, 16.5393 looks on a black background.

Color Contrast Check

Large Text (above 18pt) WCAG AA ✓ Pass

Any Text WCAG AA ✓ Pass

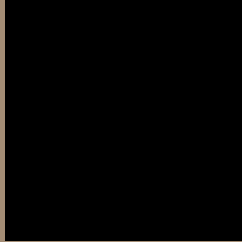
Large Text (above 18pt) WCAG AAA ✓ Pass

Any Text WCAG AAA × Fail

If you want to check with other color combinations, try the [Color Contrast Checker](#).

YUV 145.1410, -13.8735, 16.5393

Background



This preview shows how black text looks on a background with the YUV color 145.1410, -13.8735, 16.5393.



This preview shows how white text looks on a background with the YUV color 145.1410, -13.8735, 16.5393.

Color Blindness Simulation

Color vision deficiency is a very complex topic, and I could not describe the different causes any better than Wikipedia does, so if you want to learn more, you should check out their [article about color blindness](#).

Dichromacy



Original Color

145.1410, -13.8735, 16.5393

Protanopia

144.4280, -12.5360, 7.5176

Deuteranopia

145.1630, -13.8844, 20.0280



Tritanopia

147.1100, -0.0542, 17.4435

Trichromacy



Original Color

145.1410, -13.8735, 16.5393

Protanomaly

144.9230, -13.2730, 10.5915

Deuteranomaly

145.4510, -14.0263, 18.8985

Tritanomaly

146.1440, -5.0010, 17.4137

Monochromacy



Original Color

145.1410, -13.8735, 16.5393

Achromatopsia

145.0000, 0.0000, 0.0000

Achromatomaly

145.3660, -5.1104, 5.8180

CSS Examples

Text

The CSS property to change the color of the text to YUV 145.1410, -13.8735, 16.5393 is called "color". The color property can be set on classes, ids or directly on the HTML element.

This example shows how text in the color `rgb(164, 141, 117)` looks like.

```
.text, #text, p{  
    color:rgb(164, 141, 117)  
}
```

If you want to add a text shadow in that color use the text-shadow property, you can generate a text shadow directly with our [CSS Text Shadow Generator](#).

Here you see how black text with a 4 pixel rgb(164, 141, 117) colored shadow looks like.

```
.shadow{ text-shadow: 4px 4px 2px rgb(164, 141, 117) }
```

Border

The CSS property to change the border of an element to YUV 145.1410, -13.8735, 16.5393 is called "border".

The border property can be set on classes, ids or directly on the HTML element.

This example shows the color as border, it can be applied via the CSS property "border" or "border-color".

```
.border, #border, table{ border:4px solid rgb(164, 141, 117) }
```


If only the border color should be changed use the property `border-color`.

```
.border{ border-color:rgb(164, 141, 117) }
```

If you want to add a box shadow in that color use:

Here you see how a box with a 4 pixel `rgb(164, 141, 117)` colored shadow looks like.

```
.boxshadow{ -moz-box-shadow:4px 4px 4px  
4px rgb(164, 141, 117); -webkit-box-  
shadow:4px 4px 4px 4px rgb(164, 141, 117);  
box-shadow:4px 4px 4px 4px rgb(164, 141,  
117) }
```

Background

The CSS property to change the background color of an element to YUV 145.1410, -13.8735, 16.5393 is called "background". The background property can be set on classes, ids or directly on the HTML element.

```
.background, #background, body{  
background: rgb(164, 141, 117) }
```

If only the background color should be changed can be used:

```
.background{ background-color: rgb(164,  
141, 117) }
```

This example shows the color as background, it is applied via the CSS property "background".

To optimize and compress your CSS code, you can use our [online CSS compressor and optimizer](#) based on csstidy. If you want to create a linear or radial gradient as background or border, check our [CSS Gradient Generator](#).

Hey! You found this booklet interesting? Support Converting Colors with the new Membership Option!

The pro membership hides all ads, plus gives you double the colors in the color bucket, and more awesome pro features!

[Learn more, Memberships starting at \\$2.50/m!](#)

**Follow me
on Twitter!**

@ConvertingColor