

Converting Colors

YUV(145.8240, -23.0842,
30.8494)

Have a look what the booklet for
YUV(145.8240, -23.0842, 30.8494)
contains.

YUV(145.8240, -23.0842, 30.8494)	3
<i>Conversions</i>	4
<i>Details</i>	6
<i>Harmonies</i>	12
<i>Previews</i>	24
<i>Color Blindness Simulation</i>	28
<i>CSS Examples</i>	31

Color

**YUV(145.8240, -23.0842,
30.8494)**

Conversions

Conversions Part 1

Format	Color
Hex	B58963
RGB	181, 137, 99
RGB Percent	71%, 54%, 39%
CMY	0.2902, 0.4627, 0.6118
CMYK	0.00, 0.24, 0.45, 0.29
HSL	28°, 36%, 55%
HSV	28°, 45%, 71%
XYZ	30.2538, 28.6159, 15.7333
YIQ	145.8240, 38.4220, -2.4900

Conversions

Conversions Part 2

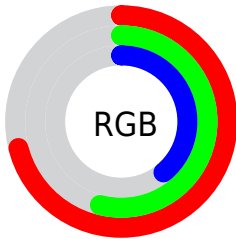
Format	Color
R_{YB}	181, 170, 99
Decimal	11897187
CIE _{Lab}	60.44, 11.90, 26.85
CIE _{LCh}	60, 29.365, 66.089
Yxy	28.6159, 0.4055, 0.3836
Android (android.graphics.Color)	4290087267 (0xFFB58963)
YUV	145.8240, -23.0842, 30.8494
Hunter-Lab	53.4939, 7.3377, 20.0077

Details

The YUV color **145.8240, -23.0842, 30.8494** is a dark color, and the websafe version is hex **CC9966**. A complement of this color would be **134.1760, 23.0842, -30.8494**, and the grayscale version is **146.0000, 0.0000, 0.0000**.

A 20% lighter version of the original color is **200.0910, -24.6949, 34.1232**, and **94.6710, -21.0368, 27.4755** is the 20% darker color. If you saturate the color by 10%, you get **137.9020, -28.0527, 37.7969**, and if you desaturate by 10%, it is **153.7460, -18.1158, 23.9018**.

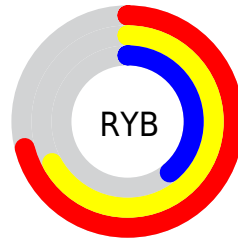
Distribution



Red (71%)

Green (54%)

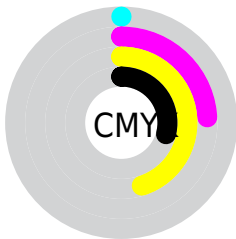
Blue (39%)



Red (71%)

Yellow (67%)

Blue (39%)

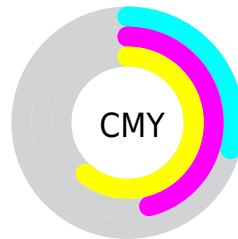


Cyan (0%)

Magenta (24%)

Yellow (45%)

Black (29%)



Cyan (29%)

Magenta (46%)

Yellow (61%)

Brightness & Saturation Gradients

These gradients show how the YUV color 145.8240, -23.0842, 30.8494 changes by changing the brightness by 10 percent. The first figure shows a shift by +10% for each color and the second figure -10%.

Similar to the brightness gradients but the following saturation gradients show a change of the YUV color 145.8240, -23.0842, 30.8494 by changing the saturation by 10% instead.

■ 145.8240,
-23.0842, 30.8494

■ 145.8240,
-23.0842, 30.8494

■ 255.0000, 0.0000,
0.0000

■ 120.0410,
-22.2052, 28.9050

■ 200.0910,
-24.6949, 34.1232

■ 94.6710, -21.0368,
27.4755

■ 224.3890,
-23.3628, 26.8458

■ 70.8880, -20.1578,
25.5312

■ 244.6040,
-19.5248, 9.1173

■ 47.4640, -20.4418,
23.2721

■ 252.4920, -9.6096,
2.1995

■ 26.9780, -13.3002,
19.3133

■ 7.7740, -3.8326,
15.9842

■ 0.0000, 0.0000,

0.0000

■ 145.8240,
-23.0842, 30.8494

■ 145.8240,
-23.0842, 30.8494

■ 137.9020,
-28.0527, 37.7969

■ 153.7460,
-18.1158, 23.9018

■ 130.5670,
-33.3105, 44.2297

■ 161.0810,
-12.8579, 17.4690

■ 122.6450,
-38.2790, 51.1773

■ 169.0030, -7.8895,
10.5214

■ 114.7230,
-43.2474, 58.1249

■ 176.9250, -2.9210,
3.5738

■ 106.8010,
-48.2159, 65.0725

■ 184.9610, 2.4842,
-3.4738

■ 103.4270,
-50.9895, 68.0315

■ 192.2960, 7.7421,
-9.9066

■ 200.2180, 12.7105,
-16.8542

■ 208.1400, 17.6790,
-23.8018

■ 214.6770, 19.8792,
-29.5347

Harmonies

Analogous

The Analogous color harmony consists of three colors that are next to each other on the color wheel.



147.2520, -15.4072, 41.8750



145.8240, -23.0842, 30.8494



143.6600, -24.4824, 12.5762

Triad

The Triadic color harmony groups three colors that are evenly spaced from another and form a triangle on the color wheel.



145.8240, -23.0842, 30.8494



131.9500, 8.8987, -54.3301



148.4950, 19.4760, 6.5819

Complementary

The Complementary color scheme is a pair of colors which are on the opposite of each other on the color wheel.



145.8240, -23.0842, 30.8494



134.1760, 23.0842, -30.8494

Split Complementary

Split-complementary colors differ from the complementary color scheme. The scheme consists of three colors, the original color and two neighbors of the complement color.



143.7410, 26.2567, -21.6979



145.8240, -23.0842, 30.8494



130.0270, 22.1717, -64.9217

Square

The Square scheme is like the rectangle color scheme, but the four colors are evenly spaced on the color wheel.



145.8240, -23.0842, 30.8494



136.7820, -6.3015, -32.2578



135.9070, 27.6538, -49.9074



149.4780, 8.6383, 29.3988

Rectangle

The Rectangle color scheme consists of four colors that form a rectangle on the color wheel.



145.8240, -23.0842, 30.8494



141.7830, -21.0920, -1.5637



135.9070, 27.6538, -49.9074



147.1240, 22.1239, -2.7397

Sweetspot

The Sweet Spot groups the original color and five complimentary colors.



145.8240, -23.0842, 30.8494



220.6720, -9.2053, 12.5657



128.6480, 7.5685, 45.9127



108.8500, -5.8420, 7.1476



245.0000, 0.0000, 0.0000



117.0000, 0.0000, 0.0000

Same Dimension

The Same Dimension uses a secret algorithm to generate beautiful new colors.



145.8240, -23.0842, 30.8494



180.6060, -35.7948, 47.7035



169.3040, -34.6599, 10.2574



85.0390, -2.4842, 3.4738



87.4240, -43.1000, 57.5102



14.8180, -7.3053, 9.8066

Inverse Universe

The Inverse Universe completely reimagines the original color for something new.



134.1760, 23.0842, -30.8494



162.3940, 35.7948, -47.7035



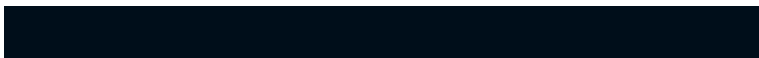
110.6960, 34.6599, -10.2574



83.9610, 2.4842, -3.4738



65.5760, 43.1000, -57.5102



11.1820, 7.3053, -9.8066

Previews

White Background



This preview shows how the YUV color 145.8240, -23.0842, 30.8494 looks on a white background.

Color Contrast Check

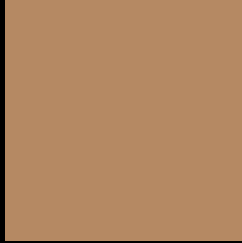
Large Text (above 18pt) WCAG AA ✓ Pass

Any Text WCAG AA × Fail

Large Text (above 18pt) WCAG AAA × Fail

Any Text WCAG AAA × Fail

Black Background



This preview shows how the YUV color 145.8240, -23.0842, 30.8494 looks on a black background.

Color Contrast Check

Large Text (above 18pt) WCAG AA ✓ Pass

Any Text WCAG AA ✓ Pass

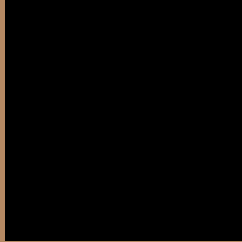
Large Text (above 18pt) WCAG AAA ✓ Pass

Any Text WCAG AAA × Fail

If you want to check with other color combinations, try the [Color Contrast Checker](#).

YUV 145.8240, -23.0842, 30.8494

Background



This preview shows how black text looks on a background with the YUV color 145.8240, -23.0842, 30.8494.



This preview shows how white text looks on a background with the YUV color 145.8240, -23.0842, 30.8494.

30.8494.

Color Blindness Simulation

Color vision deficiency is a very complex topic, and I could not describe the different causes any better than Wikipedia does, so if you want to learn more, you should check out their [article about color blindness](#).

Dichromacy



Original Color

145.8240, -23.0842, 30.8494

Protanopia

144.6860, -20.5512, 11.6764

Deuteranopia

145.6770, -23.5048, 25.7163



Tritanopia

148.4000, -3.1552, 32.0982

Trichromacy



Original Color

145.8240, -23.0842, 30.8494

Protanomaly

145.2030, -21.2991, 18.2390

Deuteranomaly

145.6880, -23.5102, 27.4606

Tritanomaly

147.4510, -10.5753, 32.0535

Monochromacy



Original Color

145.8240, -23.0842, 30.8494

Achromatopsia

146.0000, 0.0000, 0.0000

Achromatomaly

146.1880, -8.4737, 11.2361

CSS Examples

Text

The CSS property to change the color of the text to YUV 145.8240, -23.0842, 30.8494 is called "color". The color property can be set on classes, ids or directly on the HTML element.

This example shows how text in the color `rgb(181, 137, 99)` looks like.

```
.text, #text, p{  
    color:rgb(181, 137, 99)  
}
```

If you want to add a text shadow in that color use the text-shadow property, you can generate a text shadow directly with our [CSS Text Shadow Generator](#).

Here you see how black text with a 4 pixel rgb(181, 137, 99) colored shadow looks like.

```
.shadow{ text-shadow: 4px 4px 2px rgb(181, 137, 99) }
```

Border

The CSS property to change the border of an element to YUV 145.8240, -23.0842, 30.8494 is called "border".

The border property can be set on classes, ids or directly on the HTML element.

This example shows the color as border, it can be applied via the CSS property "border" or "border-color".

```
.border, #border, table{ border:4px solid rgb(181, 137, 99) }
```


If only the border color should be changed use the property border-color.

```
.border{ border-color:rgb(181, 137, 99) }
```

If you want to add a box shadow in that color use:

Here you see how a box with a 4 pixel rgb(181, 137, 99) colored shadow looks like.

```
.boxshadow{ -moz-box-shadow:4px 4px 4px  
4px rgb(181, 137, 99); -webkit-box-  
shadow:4px 4px 4px 4px rgb(181, 137, 99);  
box-shadow:4px 4px 4px 4px rgb(181, 137,  
99) }
```

Background

The CSS property to change the background color of an element to YUV 145.8240, -23.0842, 30.8494 is called "background". The background property can be set on classes, ids or directly on the HTML element.

```
.background, #background, body{  
background: rgb(181, 137, 99) }
```

If only the background color should be changed can be used:

```
.background{ background-color: rgb(181,  
137, 99) }
```

This example shows the color as background, it is applied via the CSS property "background".

To optimize and compress your CSS code, you can use our [online CSS compressor and optimizer](#) based on csstidy. If you want to create a linear or radial gradient as background or border, check our [CSS Gradient Generator](#).

Hey! You found this booklet interesting? Support Converting Colors with the new Membership Option!

The pro membership hides all ads, plus gives you double the colors in the color bucket, and more awesome pro features!

[Learn more, Memberships starting at \\$2.50/m!](#)

**Follow me
on Twitter!**

@ConvertingColor