

# Converting Colors

YUV(146.0030, -7.3965,  
85.9434)

Have a look what the booklet for  
YUV(146.0030, -7.3965, 85.9434)  
contains.

<b>YUV(146.0030, -7.3965, 85.9434)</b> .....	3
<b><i>Conversions</i></b> .....	4
<b><i>Details</i></b> .....	6
<b><i>Harmonies</i></b> .....	12
<b><i>Previews</i></b> .....	24
<b><i>Color Blindness Simulation</i></b> .....	28
<b><i>CSS Examples</i></b> .....	31

# Color

**YUV(146.0030, -7.3965,  
85.9434)**

# Conversions

## Conversions Part 1

<b>Format</b>	<b>Color</b>
Hex	F46383
RGB	244, 99, 131
RGB Percent	96%, 39%, 51%
CMY	0.0431, 0.6118, 0.4863
CMYK	0.00, 0.59, 0.46, 0.04
HSL	347°, 87%, 67%
HSV	347°, 59%, 96%
XYZ	45.8668, 29.7955, 24.8064
YIQ	146.0030, 76.1480, 40.6920

# Conversions

## Conversions Part 2

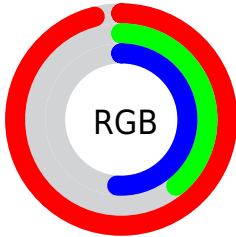
<b>Format</b>	<b>Color</b>
<b>R<sub>YB</sub></b>	244, 99, 131
Decimal	16016259
CIE <sub>Lab</sub>	61.48, 58.23, 11.43
CIE <sub>LCh</sub>	61, 59.341, 11.106
Yxy	29.7955, 0.4565, 0.2966
Android (android.graphics.Color)	4294206339 (0xFFFF46383)
YUV	146.0030, -7.3965, 85.9434
Hunter-Lab	54.5852, 54.4656, 11.2652

# Details

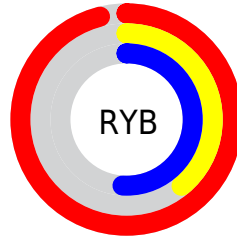
The YUV color **146.0030, -7.3965, 85.9434** is a light color, and the websafe version is hex **FF6699**. A complement of this color would be **196.9970, 7.3965, -85.9434**, and the grayscale version is **146.0000, 0.0000, 0.0000**.

A 20% lighter version of the original color is **188.2060, -2.0736, 58.5783**, and **87.5450, -2.7337, 83.7140** is the 20% darker color. If you saturate the color by 10%, you get **129.7490, -8.7503, 100.1981**, and if you desaturate by 10%, it is **162.2570, -6.0427, 71.6886**.

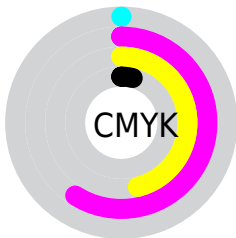
# Distribution



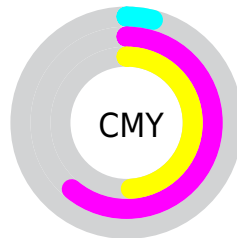
- Red (96%)
- Green (39%)
- Blue (51%)



- Red (96%)
- Yellow (39%)
- Blue (51%)



- Cyan (0%)
- Magenta (59%)
- Yellow (46%)
- Black (4%)



- Cyan (4%)
- Magenta (61%)
- Yellow (49%)

# Brightness & Saturation Gradients

These gradients show how the YUV color 146.0030, -7.3965, 85.9434 changes by changing the brightness by 10 percent. The first figure shows a shift by +10% for each color and the second figure -10%.

Similar to the brightness gradients but the following saturation gradients show a change of the YUV color 146.0030, -7.3965, 85.9434 by changing the saturation by 10% instead.



146.0030, -7.3965,  
85.9434

146.0030, -7.3965,  
85.9434

255.0000, 0.0000,  
0.0000

117.4480, -5.6439,  
83.7991

188.2060, -2.0736,  
58.5783

87.5450, -2.7337,  
83.7140

208.3070, 1.3276,  
40.9498

52.4730, 3.2178,  
88.1622

228.0490, 5.8918,  
23.6360

41.1090, -1.5327,  
71.8184

247.3690, 3.7621,  
6.6924

30.0440, -6.4307,  
56.0894

20.2610, -9.0027,  
40.9901

10.5790, -4.7224,

21.4172

■ 0.0000, 0.0000,  
0.0000

■ 146.0030, -7.3965,  
85.9434

■ 146.0030, -7.3965,  
85.9434

■ 129.7490, -8.7503,  
100.1981

■ 162.2570, -6.0427,  
71.6886

■ 112.9080, -9.8146,  
114.9677

■ 179.0980, -4.9783,  
56.9191

■ 96.6540, -11.1684,  
129.2224

■ 195.3520, -3.6245,  
42.6643

■ 79.8130, -12.2328,  
143.9920

■ 212.1930, -2.5601,  
27.8947

■ 79.1120, -12.3802,  
144.6068

■ 228.4470, -1.2064,  
13.6400

■ 244.7010, 0.1474,  
-0.6148

■ 251.7110, 1.6215,  
-6.7625

# Harmonies

## Analogous

The Analogous color harmony consists of three colors that are next to each other on the color wheel.



150.1850, 16.6708, 66.4898



146.0030, -7.3965, 85.9434



145.6450, -31.3770, 77.4873

# Triad

The Triadic color harmony groups three colors that are evenly spaced from another and form a triangle on the color wheel.



146.0030, -7.3965, 85.9434



134.0510, -34.5351, -29.8627



123.9530, 61.1552, -108.7068

# Complementary

The Complementary color scheme is a pair of colors which are on the opposite of each other on the color wheel.



146.0030, -7.3965, 85.9434



196.9970, 7.3965, -85.9434

# Split Complementary

Split-complementary colors differ from the complementary color scheme. The scheme consists of three colors, the original color and two neighbors of the complement color.



125.0010, 44.8625, -109.6259



146.0030, -7.3965, 85.9434



113.1450, -0.5645, -99.2282

# Square

The Square scheme is like the rectangle color scheme, but the four colors are evenly spaced on the color wheel.



146.0030, -7.3965, 85.9434



140.2280, -52.8634, 15.5860



121.1760, 22.5912, -106.2714



139.2250, 55.5981, -52.8173



# Rectangle

The Rectangle color scheme consists of four colors that form a rectangle on the color wheel.



146.0030, -7.3965, 85.9434



145.1040, -44.4213, 61.2988



121.1760, 22.5912, -106.2714



125.3890, 56.5032, -109.9662

# Sweetspot

The Sweet Spot groups the original color and five complimentary colors.



146.0030, -7.3965, 85.9434



223.8940, -2.4127, 27.2800



148.7190, 46.9735, 53.7434



108.4690, -1.2172, 17.1287



0.0000, 0.0000, 0.0000



128.0000, 0.0000, 0.0000



# Same Dimension

The Same Dimension uses a secret algorithm to generate beautiful new colors.



146.0030, -7.3965, 85.9434



132.6790, -9.2087, 107.2755



165.2480, -32.6603, 69.0655



113.9300, -0.4585, 7.0774



60.2880, -9.5090, 110.2494



19.1230, -3.0186, 34.9721



# Inverse Universe

The Inverse Universe completely reimagines the original color for something new.



146.0030, -7.3965, 85.9434



132.6790, -9.2087, 107.2755



177.7520, 32.6603, -69.0655



113.9300, -0.4585, 7.0774



60.2880, -9.5090, 110.2494



19.1230, -3.0186, 34.9721



# Previews

## White Background



This preview shows how the YUV color 146.0030, -7.3965, 85.9434 looks on a white background.

## Color Contrast Check

Large Text (above 18pt) WCAG AA ✓ Pass

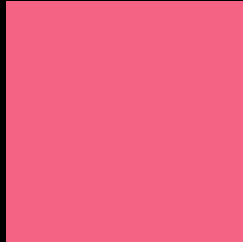
Any Text WCAG AA × Fail

Large Text (above 18pt) WCAG AAA × Fail

Any Text WCAG AAA × Fail



# Black Background



This preview shows how the YUV color 146.0030, -7.3965, 85.9434 looks on a black background.

## Color Contrast Check

Large Text (above 18pt) WCAG AA ✓ Pass

Any Text WCAG AA ✓ Pass

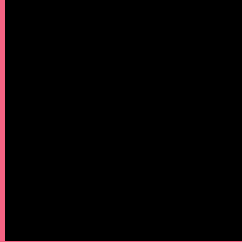
Large Text (above 18pt) WCAG AAA ✓ Pass

Any Text WCAG AAA × Fail

If you want to check with other color combinations, try the [Color Contrast Checker](#).

# YUV 146.0030, -7.3965, 85.9434

## Background



This preview shows how black text looks on a background with the YUV color 146.0030, -7.3965, 85.9434.



This preview shows how white text looks on a background with the YUV color 146.0030, -7.3965,

85.9434.

# Color Blindness Simulation

Color vision deficiency is a very complex topic, and I could not describe the different causes any better than Wikipedia does, so if you want to learn more, you should check out their [article about color blindness](#).

## Dichromacy



### Original Color

146.0030, -7.3965, 85.9434

### Protanopia

149.4390, 4.2206, -0.3850

### Deuteranopia

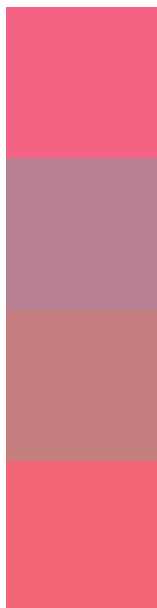
149.5050, -12.5740, 19.7281



## Tritanopia

145.6580, -17.5794, 85.3689

# Trichromacy



## Original Color

146.0030, -7.3965, 85.9434

## Protanomaly

148.1980, -0.0976, 31.3984

## Deuteranomaly

148.2290, -10.4659, 43.6492

## Tritanomaly

145.9830, -13.7956, 85.0839

# Monochromacy



## Original Color

146.0030, -7.3965, 85.9434

## Achromatopsia

146.0000, 0.0000, 0.0000

## Achromatomaly

146.2150, -2.5710, 31.3834

# CSS Examples

## Text

The CSS property to change the color of the text to YUV 146.0030, -7.3965, 85.9434 is called "color". The color property can be set on classes, ids or directly on the HTML element.

This example shows how text in the color `rgb(244, 99, 131)` looks like.

```
.text, #text, p{  
    color:rgb(244, 99, 131)  
}
```

If you want to add a text shadow in that color use the text-shadow property, you can generate a text shadow directly with our [CSS Text Shadow Generator](#).

Here you see how black text with a 4 pixel rgb(244, 99, 131) colored shadow looks like.

```
.shadow{ text-shadow: 4px 4px 2px rgb(244, 99, 131) }
```

## Border

The CSS property to change the border of an element to YUV 146.0030, -7.3965, 85.9434 is called "border". The border property can be set on classes, ids or directly on the HTML element.

This example shows the color as border, it can be applied via the CSS property "border" or "border-color".

```
.border, #border, table{ border:4px solid rgb(244, 99, 131) }
```



If only the border color should be changed use the property `border-color`.

```
.border{ border-color:rgb(244, 99, 131) }
```

If you want to add a box shadow in that color use:

Here you see how a box with a 4 pixel `rgb(244, 99, 131)` colored shadow looks like.

```
.boxshadow{ -moz-box-shadow:4px 4px 4px  
4px rgb(244, 99, 131); -webkit-box-  
shadow:4px 4px 4px 4px rgb(244, 99, 131);  
box-shadow:4px 4px 4px 4px rgb(244, 99,  
131) }
```

# Background

The CSS property to change the background color of an element to YUV 146.0030, -7.3965, 85.9434 is called "background". The background property can be set on classes, ids or directly on the HTML element.

```
.background, #background, body{  
background: rgb(244, 99, 131) }
```

If only the background color should be changed can be used:

```
.background{ background-color: rgb(244, 99,  
131) }
```

This example shows the color as background, it is applied via the CSS property "background".

To optimize and compress your CSS code, you can use our [online CSS compressor and optimizer](#) based on csstidy. If you want to create a linear or radial gradient as background or border, check our [CSS Gradient Generator](#).

Hey! You found this booklet interesting? Support Converting Colors with the new Membership Option!

The pro membership hides all ads, plus gives you double the colors in the color bucket, and more awesome pro features!

**[Learn more, Memberships starting at \\$2.50/m!](#)**

**Follow me  
on Twitter!**

@ConvertingColor