

Converting Colors

YUV(146.3250, -26.2892,
32.1640)

Have a look what the booklet for
YUV(146.3250, -26.2892, 32.1640)
contains.

YUV(146.3250, -26.2892, 32.1640)	3
<i>Conversions</i>	4
<i>Details</i>	6
<i>Harmonies</i>	12
<i>Previews</i>	24
<i>Color Blindness Simulation</i>	28
<i>CSS Examples</i>	31

Color

**YUV(146.3250, -26.2892,
32.1640)**

Conversions

Conversions Part 1

Format	Color
Hex	B78A5D
RGB	183, 138, 93
RGB Percent	72%, 54%, 36%
CMY	0.2824, 0.4588, 0.6353
CMYK	0.00, 0.25, 0.49, 0.28
HSL	30°, 38%, 54%
HSV	30°, 49%, 72%
XYZ	30.5927, 29.0346, 14.3477
YIQ	146.3250, 41.2650, -4.4550

Conversions

Conversions Part 2

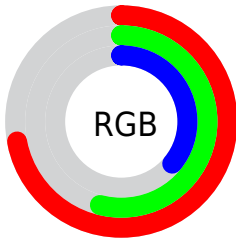
Format	Color
RYB	183, 183, 93
Decimal	12028509
CIELab	60.81, 11.57, 30.66
CIElCh	61, 32.772, 69.320
Yxy	29.0346, 0.4136, 0.3925
Android (android.graphics.Color)	4290218589 (0xFFB78A5D)
YUV	146.3250, -26.2892, 32.1640
Hunter-Lab	53.8837, 7.0476, 21.9313

Details

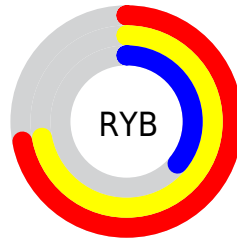
The YUV color **146.3250, -26.2892, 32.1640** is a dark color, and the websafe version is hex **CC9966**. A complement of this color would be **129.6750, 26.2892, -32.1640**, and the grayscale version is **147.0000, 0.0000, 0.0000**.

A 20% lighter version of the original color is **200.5920, -27.8999, 35.4378**, and **95.1720, -24.2418, 28.7902** is the 20% darker color. If you saturate the color by 10%, you get **138.9900, -31.5471, 38.5968**, and if you desaturate by 10%, it is **153.6600, -21.0314, 25.7312**.

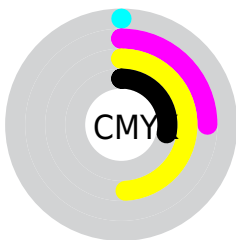
Distribution



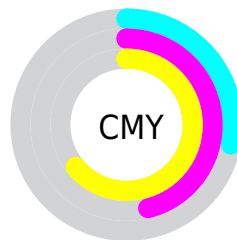
- Red (72%)
- Green (54%)
- Blue (36%)



- Red (72%)
- Yellow (72%)
- Blue (36%)



- Cyan (0%)
- Magenta (25%)
- Yellow (49%)
- Black (28%)



- Cyan (28%)
- Magenta (46%)
- Yellow (64%)

Brightness & Saturation Gradients

These gradients show how the YUV color 146.3250, -26.2892, 32.1640 changes by changing the brightness by 10 percent. The first figure shows a shift by +10% for each color and the second figure -10%.

Similar to the brightness gradients but the following saturation gradients show a change of the YUV color 146.3250, -26.2892, 32.1640 by changing the saturation by 10% instead.

■ 146.3250,
-26.2892, 32.1640

■ 146.3250,
-26.2892, 32.1640

■ 255.0000, 0.0000,
0.0000

■ 120.5420,
-25.4102, 30.2197

■ 200.5920,
-27.8999, 35.4378

■ 95.1720, -24.2418,
28.7902

■ 224.2920,
-26.2730, 26.9309

■ 70.9760, -23.6522,
26.3310

■ 244.3930,
-22.8717, 9.3023

■ 47.6660, -23.4993,
23.9719

■ 251.6940,
-12.6671, 2.8994

■ 27.8640, -13.7370,
19.4133

■ 7.7740, -3.8326,
15.9842

■ 0.0000, 0.0000,

0.0000

■ 146.3250,
-26.2892, 32.1640

■ 146.3250,
-26.2892, 32.1640

■ 138.9900,
-31.5471, 38.5968

■ 153.6600,
-21.0314, 25.7312

■ 131.5410,
-37.2417, 45.1295

■ 161.1090,
-15.3367, 19.1984

■ 124.2060,
-42.4996, 51.5623

■ 168.4440,
-10.0789, 12.7656

■ 116.2840,
-47.4680, 58.5099

■ 176.3660, -5.1104,
5.8180

■ 108.9490,
-52.7259, 64.9427

■ 183.8150, 0.5842,
-0.7148

■ 108.7210,
-53.5995, 65.1427

■ 191.1500, 5.8421,
-7.1475

■ 198.4850, 11.0999,
-13.5803

■ 205.8200, 16.3577,
-20.0131

■ 212.9270, 20.7420,
-26.2460

Harmonies

Analogous

The Analogous color harmony consists of three colors that are next to each other on the color wheel.



148.1770, -18.3283, 45.4488



146.3250, -26.2892, 32.1640



143.9650, -27.0977, 11.4317

Triad

The Triadic color harmony groups three colors that are evenly spaced from another and form a triangle on the color wheel.



146.3250, -26.2892, 32.1640



128.0130, 13.3046, -67.5404



150.1580, 20.6281, 10.3854

Complementary

The Complementary color scheme is a pair of colors which are on the opposite of each other on the color wheel.



146.3250, -26.2892, 32.1640



129.6750, 26.2892, -32.1640

Split Complementary

Split-complementary colors differ from the complementary color scheme. The scheme consists of three colors, the original color and two neighbors of the complement color.



144.7240, 28.7301, -21.6829



146.3250, -26.2892, 32.1640



124.5240, 28.3357, -82.0205

Square

The Square scheme is like the rectangle color scheme, but the four colors are evenly spaced on the color wheel.



146.3250, -26.2892, 32.1640



135.6670, -5.2588, -40.0500



135.0140, 32.0381, -56.1403



150.5110, 8.6221, 34.6319

Rectangle

The Rectangle color scheme consists of four colors that form a rectangle on the color wheel.



146.3250, -26.2892, 32.1640



141.3050, -22.8284, -4.6525



135.0140, 32.0381, -56.1403



148.6020, 23.8602, 0.3490

Sweetspot

The Sweet Spot groups the original color and five complimentary colors.



146.3250, -26.2892, 32.1640



222.4440, -10.0789, 12.7656



125.0400, 6.3893, 50.8309



111.0350, -6.4263, 7.8623



247.0000, 0.0000, 0.0000



120.0000, 0.0000, 0.0000

Same Dimension

The Same Dimension uses a secret algorithm to generate beautiful new colors.



146.3250, -26.2892, 32.1640



179.9500, -40.8943, 50.0329



172.7400, -39.3118, 8.9980



88.0390, -2.4842, 3.4738



92.4300, -45.5680, 55.7509



16.5900, -8.1789, 10.0066

Inverse Universe

The Inverse Universe completely reimagines the original color for something new.



129.6750, 26.2892, -32.1640



154.0500, 40.8943, -50.0329



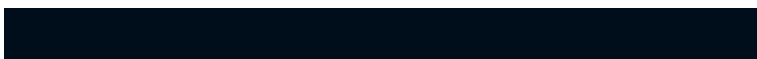
103.2600, 39.3118, -8.9980



86.3740, 2.7736, -2.9590



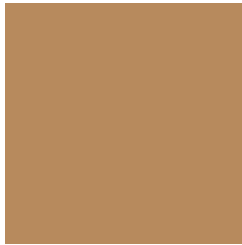
63.5700, 45.5680, -55.7509



11.4100, 8.1789, -10.0066

Previews

White Background



This preview shows how the YUV color 146.3250, -26.2892, 32.1640 looks on a white background.

Color Contrast Check

Large Text (above 18pt) WCAG AA ✓ Pass

Any Text WCAG AA × Fail

Large Text (above 18pt) WCAG AAA × Fail

Any Text WCAG AAA × Fail

Black Background



This preview shows how the YUV color 146.3250, -26.2892, 32.1640 looks on a black background.

Color Contrast Check

Large Text (above 18pt) WCAG AA ✓ Pass

Any Text WCAG AA ✓ Pass

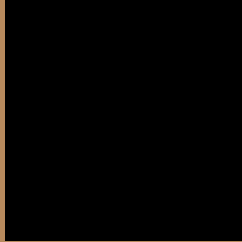
Large Text (above 18pt) WCAG AAA ✓ Pass

Any Text WCAG AAA × Fail

If you want to check with other color combinations, try the [Color Contrast Checker](#).

YUV 146.3250, -26.2892, 32.1640

Background



This preview shows how black text looks on a background with the YUV color 146.3250, -26.2892, 32.1640.



This preview shows how white text looks on a background with the YUV color 146.3250, -26.2892, 32.1640.

Color Blindness Simulation

Color vision deficiency is a very complex topic, and I could not describe the different causes any better than Wikipedia does, so if you want to learn more, you should check out their [article about color blindness](#).

Dichromacy



Original Color

146.3250, -26.2892, 32.1640

Protanopia

145.1870, -23.7562, 12.9910

Deuteranopia

145.5910, -26.4204, 27.5457



Tritanopia

149.5850, -3.7394, 32.8130

Trichromacy



Original Color

146.3250, -26.2892, 32.1640

Protanomaly

145.7040, -24.5041, 19.5536

Deuteranomaly

145.6020, -26.4258, 29.2900

Tritanomaly

148.4080, -12.0331, 32.9682

Monochromacy



Original Color

146.3250, -26.2892, 32.1640

Achromatopsia

146.0000, 0.0000, 0.0000

Achromatomaly

145.9600, -9.3473, 11.4361

CSS Examples

Text

The CSS property to change the color of the text to YUV 146.3250, -26.2892, 32.1640 is called "color". The color property can be set on classes, ids or directly on the HTML element.

This example shows how text in the color `rgb(183, 138, 93)` looks like.

```
.text, #text, p{  
    color:rgb(183, 138, 93)  
}
```

If you want to add a text shadow in that color use the text-shadow property, you can generate a text shadow directly with our [CSS Text Shadow Generator](#).

Here you see how black text with a 4 pixel rgb(183, 138, 93) colored shadow looks like.

```
.shadow{ text-shadow: 4px 4px 2px rgb(183, 138, 93) }
```

Border

The CSS property to change the border of an element to YUV 146.3250, -26.2892, 32.1640 is called "border".

The border property can be set on classes, ids or directly on the HTML element.

This example shows the color as border, it can be applied via the CSS property "border" or "border-color".

```
.border, #border, table{ border:4px solid rgb(183, 138, 93) }
```


If only the border color should be changed use the property `border-color`.

```
.border{ border-color:rgb(183, 138, 93) }
```

If you want to add a box shadow in that color use:

Here you see how a box with a 4 pixel `rgb(183, 138, 93)` colored shadow looks like.

```
.boxshadow{ -moz-box-shadow:4px 4px 4px  
4px rgb(183, 138, 93); -webkit-box-  
shadow:4px 4px 4px 4px rgb(183, 138, 93);  
box-shadow:4px 4px 4px 4px rgb(183, 138,  
93) }
```

Background

The CSS property to change the background color of an element to YUV 146.3250, -26.2892, 32.1640 is called "background". The background property can be set on classes, ids or directly on the HTML element.

```
.background, #background, body{  
background: rgb(183, 138, 93) }
```

If only the background color should be changed can be used:

```
.background{ background-color: rgb(183,  
138, 93) }
```

This example shows the color as background, it is applied via the CSS property "background".

To optimize and compress your CSS code, you can use our [online CSS compressor and optimizer](#) based on csstidy. If you want to create a linear or radial gradient as background or border, check our [CSS Gradient Generator](#).

Hey! You found this booklet interesting? Support Converting Colors with the new Membership Option!

The pro membership hides all ads, plus gives you double the colors in the color bucket, and more awesome pro features!

[Learn more, Memberships starting at \\$2.50/m!](#)

**Follow me
on Twitter!**

@ConvertingColor