

Converting Colors

YUV(146.5670, -16.5485,
34.5827)

Have a look what the booklet for
YUV(146.5670, -16.5485, 34.5827)
contains.

YUV(146.5670, -16.5485, 34.5827)	3
<i>Conversions</i>	4
<i>Details</i>	6
<i>Harmonies</i>	12
<i>Previews</i>	24
<i>Color Blindness Simulation</i>	28
<i>CSS Examples</i>	31

Color

**YUV(146.5670, -16.5485,
34.5827)**

Conversions

Conversions Part 1

Format	Color
Hex	BA8571
RGB	186, 133, 113
RGB Percent	73%, 52%, 44%
CMY	0.2706, 0.4784, 0.5569
CMYK	0.00, 0.28, 0.39, 0.27
HSL	16°, 35%, 59%
HSV	16°, 39%, 73%
XYZ	31.6179, 28.4064, 19.4393
YIQ	146.5670, 38.0080, 5.0160

Conversions

Conversions Part 2

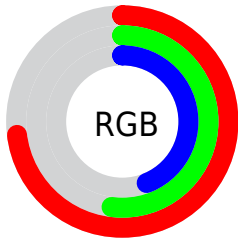
Format	Color
R_{YB}	186, 141, 113
Decimal	12223857
CIE _{Lab}	60.25, 17.76, 18.86
CIE _{LCh}	60, 25.905, 46.708
Yxy	28.4064, 0.3979, 0.3575
Android (android.graphics.Color)	4290413937 (0xFFBA8571)
YUV	146.5670, -16.5485, 34.5827
Hunter-Lab	53.2977, 12.6209, 15.6834

Details

The YUV color **146.5670, -16.5485, 34.5827** is a dark color, and the websafe version is hex **CC9999**. A complement of this color would be **152.4330, 16.5485, -34.5827**, and the grayscale version is **147.0000, 0.0000, 0.0000**.

A 20% lighter version of the original color is **200.9480, -17.7224, 37.7566**, and **95.3000, -14.9379, 31.3089** is the 20% darker color. If you saturate the color by 10%, you get **136.1830, -20.7962, 43.6895**, and if you desaturate by 10%, it is **156.9510, -12.3008, 25.4760**.

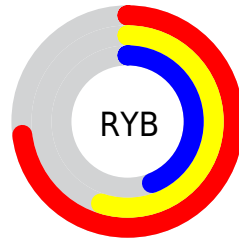
Distribution



Red (73%)

Green (52%)

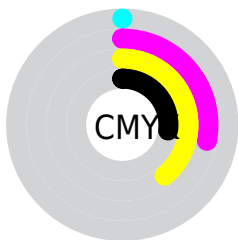
Blue (44%)



Red (73%)

Yellow (55%)

Blue (44%)

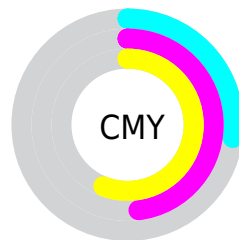


Cyan (0%)

Magenta (28%)

Yellow (39%)

Black (27%)



Cyan (27%)

Magenta (48%)

Yellow (56%)

Brightness & Saturation Gradients

These gradients show how the YUV color 146.5670, -16.5485, 34.5827 changes by changing the brightness by 10 percent. The first figure shows a shift by +10% for each color and the second figure -10%.

Similar to the brightness gradients but the following saturation gradients show a change of the YUV color 146.5670, -16.5485, 34.5827 by changing the saturation by 10% instead.

■ 146.5670,
-16.5485, 34.5827

■ 146.5670,
-16.5485, 34.5827

■ 255.0000, 0.0000,
0.0000

■ 120.6700,
-16.1063, 32.7384

■ 200.9480,
-17.7224, 37.7566

■ 95.3000, -14.9379,
31.3089

■ 223.7510,
-15.6532, 27.4054

■ 71.2180, -13.9115,
28.7498

■ 243.9660,
-11.8152, 9.6768

■ 47.8480, -12.7431,
27.3203

■ 254.2020, -3.0576,
0.6998

■ 25.5380, -12.5902,
24.9612

■ 9.6820, -4.2802,
19.5729

■ 0.0000, 0.0000,

0.0000

■ 146.5670,
-16.5485, 34.5827

■ 146.5670,
-16.5485, 34.5827

■ 136.1830,
-20.7962, 43.6895

■ 156.9510,
-12.3008, 25.4760

■ 126.5000,
-24.8965, 52.1815

■ 166.6340, -8.2006,
16.9840

■ 116.1160,
-29.1442, 61.2883

■ 177.0180, -3.9529,
7.8772

■ 106.4330,
-33.2445, 69.7803

■ 186.7010, 0.1474,
-0.6148

■ 96.0490, -37.4922,
78.8870

■ 197.0850, 4.3951,
-9.7215

■ 86.2520, -42.0292,
87.4790

■ 206.8820, 8.9322,
-18.3135

■ 85.5510, -42.1766,
88.0938

■ 217.1520, 12.7431,
-27.3203

■ 226.1510, 14.2226,
-35.2124

■ 234.3690, 10.1711,
-42.4196

Harmonies

Analogous

The Analogous color harmony consists of three colors that are next to each other on the color wheel.



147.9940, -7.3920, 37.7163



146.5670, -16.5485, 34.5827



144.8230, -21.6047, 22.9572

Triad

The Triadic color harmony groups three colors that are evenly spaced from another and form a triangle on the color wheel.



146.5670, -16.5485, 34.5827



136.1390, -1.0545, -35.2019



145.5530, 21.4194, -10.1320

Complementary

The Complementary color scheme is a pair of colors which are on the opposite of each other on the color wheel.



146.5670, -16.5485, 34.5827



152.4330, 16.5485, -34.5827

Split Complementary

Split-complementary colors differ from the complementary color scheme. The scheme consists of three colors, the original color and two neighbors of the complement color.



139.7950, 24.2581, -34.0232



146.5670, -16.5485, 34.5827



133.4820, 12.0874, -50.4117

Square

The Square scheme is like the rectangle color scheme, but the four colors are evenly spaced on the color wheel.



146.5670, -16.5485, 34.5827



140.0570, -13.3391, -14.9590



134.8870, 21.2547, -50.7669



148.4590, 14.0707, 13.6295

Rectangle

The Rectangle color scheme consists of four colors that form a rectangle on the color wheel.



146.5670, -16.5485, 34.5827



143.1590, -21.2774, 11.2616



134.8870, 21.2547, -50.7669



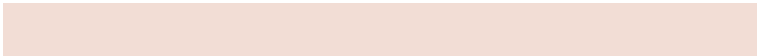
144.1390, 22.6095, -18.5389

Sweetspot

The Sweet Spot groups the original color and five complimentary colors.



146.5670, -16.5485, 34.5827



226.3670, -6.5899, 13.7101



140.9830, 12.8264, 39.4799



113.0180, -3.9529, 7.8772



250.0000, 0.0000, 0.0000



122.0000, 0.0000, 0.0000

Same Dimension

The Same Dimension uses a secret algorithm to generate beautiful new colors.



146.5670, -16.5485, 34.5827



180.8700, -26.0649, 53.6110



167.6990, -26.9666, 16.0500



86.8650, -1.9054, 4.5034



71.8850, -35.4393, 73.7689



13.0680, -6.4425, 13.0954

Inverse Universe

The Inverse Universe completely reimagines the original color for something new.



152.4330, 16.5485, -34.5827



189.7170, 25.7755, -54.1258



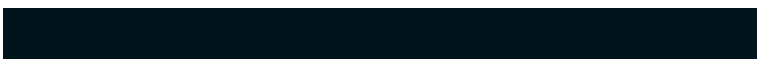
131.3010, 26.9666, -16.0500



87.5480, 2.1948, -3.9886



84.1150, 35.4393, -73.7689



14.9320, 6.4425, -13.0954

Previews

White Background



This preview shows how the YUV color 146.5670, -16.5485, 34.5827 looks on a white background.

Color Contrast Check

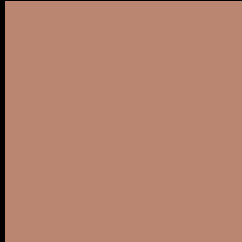
Large Text (above 18pt) WCAG AA ✓ Pass

Any Text WCAG AA × Fail

Large Text (above 18pt) WCAG AAA × Fail

Any Text WCAG AAA × Fail

Black Background



This preview shows how the YUV color 146.5670, -16.5485, 34.5827 looks on a black background.

Color Contrast Check

Large Text (above 18pt) WCAG AA ✓ Pass

Any Text WCAG AA ✓ Pass

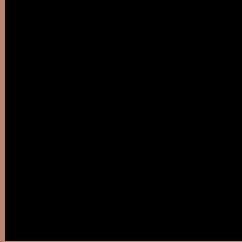
Large Text (above 18pt) WCAG AAA ✓ Pass

Any Text WCAG AAA × Fail

If you want to check with other color combinations, try the [Color Contrast Checker](#).

YUV 146.5670, -16.5485, 34.5827

Background



This preview shows how black text looks on a background with the YUV color 146.5670, -16.5485, 34.5827.



This preview shows how white text looks on a background with the YUV color 146.5670, -16.5485, 34.5827.

Color Blindness Simulation

Color vision deficiency is a very complex topic, and I could not describe the different causes any better than Wikipedia does, so if you want to learn more, you should check out their [article about color blindness](#).

Dichromacy



Original Color

146.5670, -16.5485, 34.5827

Protanopia

144.7270, -12.6834, 8.1324

Deuteranopia

146.0770, -16.8000, 21.8575



Tritanopia

147.7810, -4.3290, 35.2721

Trichromacy



Original Color

146.5670, -16.5485, 34.5827

Protanomaly

145.7390, -14.1683, 17.7689

Deuteranomaly

145.8110, -16.6688, 26.4758

Tritanomaly

147.0430, -8.4022, 35.0423

Monochromacy



Original Color

146.5670, -16.5485, 34.5827

Achromatopsia

147.0000, 0.0000, 0.0000

Achromatomaly

146.8830, -5.8583, 12.3806

CSS Examples

Text

The CSS property to change the color of the text to YUV 146.5670, -16.5485, 34.5827 is called "color". The color property can be set on classes, ids or directly on the HTML element.

This example shows how text in the color `rgb(186, 133, 113)` looks like.

```
.text, #text, p{  
    color:rgb(186, 133, 113)  
}
```

If you want to add a text shadow in that color use the text-shadow property, you can generate a text shadow directly with our [CSS Text Shadow Generator](#).

Here you see how black text with a 4 pixel rgb(186, 133, 113) colored shadow looks like.

```
.shadow{ text-shadow: 4px 4px 2px rgb(186, 133, 113) }
```

Border

The CSS property to change the border of an element to YUV 146.5670, -16.5485, 34.5827 is called "border".

The border property can be set on classes, ids or directly on the HTML element.

This example shows the color as border, it can be applied via the CSS property "border" or "border-color".

```
.border, #border, table{ border:4px solid rgb(186, 133, 113) }
```


If only the border color should be changed use the property `border-color`.

```
.border{ border-color:rgb(186, 133, 113) }
```

If you want to add a box shadow in that color use:

Here you see how a box with a 4 pixel `rgb(186, 133, 113)` colored shadow looks like.

```
.boxshadow{ -moz-box-shadow:4px 4px 4px  
4px rgb(186, 133, 113); -webkit-box-  
shadow:4px 4px 4px 4px rgb(186, 133, 113);  
box-shadow:4px 4px 4px 4px rgb(186, 133,  
113) }
```

Background

The CSS property to change the background color of an element to YUV 146.5670, -16.5485, 34.5827 is called "background". The background property can be set on classes, ids or directly on the HTML element.

```
.background, #background, body{  
background: rgb(186, 133, 113) }
```

If only the background color should be changed can be used:

```
.background{ background-color: rgb(186,  
133, 113) }
```

This example shows the color as background, it is applied via the CSS property "background".

To optimize and compress your CSS code, you can use our [online CSS compressor and optimizer](#) based on csstidy. If you want to create a linear or radial gradient as background or border, check our [CSS Gradient Generator](#).

Hey! You found this booklet interesting? Support Converting Colors with the new Membership Option!

The pro membership hides all ads, plus gives you double the colors in the color bucket, and more awesome pro features!

[Learn more, Memberships starting at \\$2.50/m!](#)

**Follow me
on Twitter!**

@ConvertingColor