

Converting Colors

YUV(146.7130, -31.4105,
41.4707)

Have a look what the booklet for
YUV(146.7130, -31.4105, 41.4707)
contains.

YUV(146.7130, -31.4105, 41.4707)	3
<i>Conversions</i>	4
<i>Details</i>	6
<i>Harmonies</i>	12
<i>Previews</i>	24
<i>Color Blindness Simulation</i>	28
<i>CSS Examples</i>	31

Color

**YUV(146.7130, -31.4105,
41.4707)**

Conversions

Conversions Part 1

Format	Color
Hex	C28753
RGB	194, 135, 83
RGB Percent	76%, 53%, 33%
CMY	0.2392, 0.4706, 0.6745
CMYK	0.00, 0.30, 0.57, 0.24
HSL	28°, 48%, 54%
HSV	28°, 57%, 76%
XYZ	32.4734, 29.4218, 12.1511
YIQ	146.7130, 51.8560, -3.6640

Conversions

Conversions Part 2

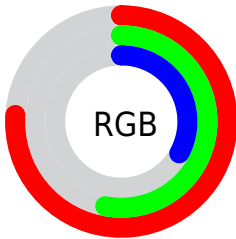
Format	Color
RYB	194, 181, 83
Decimal	12748627
CIELab	61.15, 16.99, 36.73
CIElCh	61, 40.470, 65.177
Yxy	29.4218, 0.4386, 0.3973
Android (android.graphics.Color)	4290938707 (0xFFC28753)
YUV	146.7130, -31.4105, 41.4707
Hunter-Lab	54.2419, 11.9408, 24.6874

Details

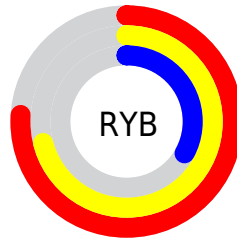
The YUV color **146.7130, -31.4105, 41.4707** is a dark color, and the websafe version is hex **CC9966**. The color can be described as middle muted orange. A complement of this color would be **130.2870, 31.4105, -41.4707**, and the grayscale version is **147.0000, 0.0000, 0.0000**.

A 20% lighter version of the original color is **201.2790, -33.1685, 45.3593**, and **94.9620, -29.0683, 36.8673** is the 20% darker color. If you saturate the color by 10%, you get **138.6770, -36.8158, 48.5183**, and if you desaturate by 10%, it is **154.7490, -26.0053, 34.4231**.

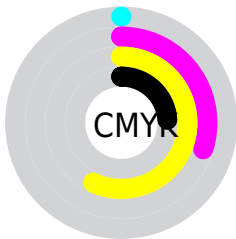
Distribution



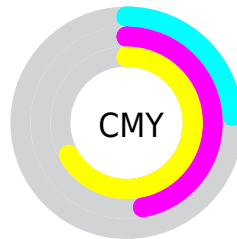
- Red (76%)
- Green (53%)
- Blue (33%)



- Red (76%)
- Yellow (71%)
- Blue (33%)



- Cyan (0%)
- Magenta (30%)
- Yellow (57%)
- Black (24%)



- Cyan (24%)
- Magenta (47%)
- Yellow (67%)

Brightness & Saturation Gradients

These gradients show how the YUV color 146.7130, -31.4105, 41.4707 changes by changing the brightness by 10 percent. The first figure shows a shift by +10% for each color and the second figure -10%.

Similar to the brightness gradients but the following saturation gradients show a change of the YUV color 146.7130, -31.4105, 41.4707 by changing the saturation by 10% instead.

■ 146.7130,
-31.4105, 41.4707

■ 146.7130,
-31.4105, 41.4707

■ 255.0000, 0.0000,
0.0000

■ 120.6310,
-30.3841, 38.9116

■ 201.2790,
-33.1685, 45.3593

■ 94.9620, -29.0683,
36.8673

■ 221.2770,
-30.2096, 29.5751

■ 70.3530, -28.7680,
33.8934

■ 241.3780,
-26.8084, 11.9465

■ 47.7100, -23.5210,
30.9493

■ 250.4400,
-17.4719, 3.9991

■ 27.8970, -13.7532,
24.6463

■ 253.7460, -4.8048,
1.0998

■ 9.8670, -4.8644,
20.2876

■ 0.0000, 0.0000,

0.0000

■ 146.7130,
-31.4105, 41.4707

■ 146.7130,
-31.4105, 41.4707

■ 138.6770,
-36.8158, 48.5183

■ 154.7490,
-26.0053, 34.4231

■ 129.9400,
-42.3684, 56.1806

■ 163.4860,
-20.4526, 26.7608

■ 121.9040,
-47.7737, 63.2282

■ 171.5220,
-15.0473, 19.7132

■ 113.7540,
-53.6157, 70.3757

■ 179.6720, -9.2053,
12.5657

■ 111.4230,
-54.9315, 72.4200

■ 188.2950, -4.0894,
5.0033

■ 196.3310, 1.3158,
-2.0443

■ 204.4810, 7.1579,
-9.1918

■ 212.5170, 12.5631,
-16.2394

■ 220.9120, 16.8054,
-23.6018

Harmonies

Analogous

The Analogous color harmony consists of three colors that are next to each other on the color wheel.



148.2000, -19.8186, 56.8296



146.7130, -31.4105, 41.4707



144.4620, -34.2448, 17.1348

Triad

The Triadic color harmony groups three colors that are evenly spaced from another and form a triangle on the color wheel.



146.7130, -31.4105, 41.4707



114.8840, 18.7912, -100.7533



150.8570, 27.1855, 7.1414

Complementary

The Complementary color scheme is a pair of colors which are on the opposite of each other on the color wheel.



146.7130, -31.4105, 41.4707



130.2870, 31.4105, -41.4707

Split Complementary

Split-complementary colors differ from the complementary color scheme. The scheme consists of three colors, the original color and two neighbors of the complement color.



142.6280, 37.6514, -36.5078



146.7130, -31.4105, 41.4707



118.2870, 34.3685, -103.7377

Square

The Square scheme is like the rectangle color scheme, but the four colors are evenly spaced on the color wheel.



146.7130, -31.4105, 41.4707



133.4120, -8.5841, -46.8423



117.5010, 46.5880, -103.0484



151.9830, 12.8264, 39.4799

Rectangle

The Rectangle color scheme consists of four colors that form a rectangle on the color wheel.



146.7130, -31.4105, 41.4707



141.7800, -29.9645, -2.4381



117.5010, 46.5880, -103.0484



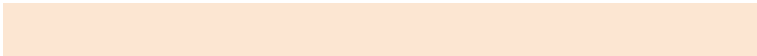
148.8060, 31.1546, -5.9689

Sweetspot

The Sweet Spot groups the original color and five complimentary colors.



146.7130, -31.4105, 41.4707



234.2980, -11.9789, 15.5247



122.9150, 9.4089, 62.3415



116.8180, -7.3053, 9.8066



0.0000, 0.0000, 0.0000



128.0000, 0.0000, 0.0000

Same Dimension

The Same Dimension uses a secret algorithm to generate beautiful new colors.



146.7130, -31.4105, 41.4707



178.1600, -49.3789, 64.7577



178.9980, -47.3270, 13.1568



92.9250, -2.9210, 3.5738



92.1640, -45.4369, 60.3692



19.2590, -9.4947, 12.0509

Inverse Universe

The Inverse Universe completely reimagines the original color for something new.



130.2870, 31.4105, -41.4707



152.4270, 49.0895, -65.2725



98.0020, 47.3270, -13.1568



91.0750, 2.9210, -3.5738



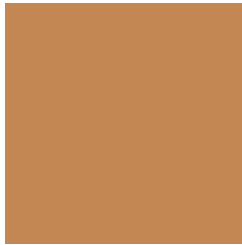
68.2490, 45.7262, -59.8544



14.3280, 9.2053, -12.5657

Previews

White Background



This preview shows how the YUV color 146.7130, -31.4105, 41.4707 looks on a white background.

Color Contrast Check

Large Text (above 18pt) WCAG AA ✓ Pass

Any Text WCAG AA × Fail

Large Text (above 18pt) WCAG AAA × Fail

Any Text WCAG AAA × Fail

Black Background



This preview shows how the YUV color 146.7130, -31.4105, 41.4707 looks on a black background.

Color Contrast Check

Large Text (above 18pt) WCAG AA ✓ Pass

Any Text WCAG AA ✓ Pass

Large Text (above 18pt) WCAG AAA ✓ Pass

Any Text WCAG AAA × Fail

If you want to check with other color combinations, try the [Color Contrast Checker](#).

YUV 146.7130, -31.4105, 41.4707

Background



This preview shows how black text looks on a background with the YUV color 146.7130, -31.4105, 41.4707.



This preview shows how white text looks on a background with the YUV color 146.7130, -31.4105, 41.4707.

Color Blindness Simulation

Color vision deficiency is a very complex topic, and I could not describe the different causes any better than Wikipedia does, so if you want to learn more, you should check out their [article about color blindness](#).

Dichromacy



Original Color

146.7130, -31.4105, 41.4707

Protanopia

145.3460, -28.2716, 14.6056

Deuteranopia

146.2340, -31.6674, 30.4898



Tritanopia

150.0700, -5.9505, 42.0346

Trichromacy



Original Color

146.7130, -31.4105, 41.4707

Protanomaly

145.7710, -29.4671, 24.7568

Deuteranomaly

146.5550, -31.8256, 34.5933

Tritanomaly

149.2520, -15.4072, 41.8750

Monochromacy



Original Color

146.7130, -31.4105, 41.4707

Achromatopsia

147.0000, 0.0000, 0.0000

Achromatomaly

147.1130, -11.3947, 14.8099

CSS Examples

Text

The CSS property to change the color of the text to YUV 146.7130, -31.4105, 41.4707 is called "color". The color property can be set on classes, ids or directly on the HTML element.

This example shows how text in the color `rgb(194, 135, 83)` looks like.

```
.text, #text, p{  
    color:rgb(194, 135, 83)  
}
```

If you want to add a text shadow in that color use the text-shadow property, you can generate a text shadow directly with our [CSS Text Shadow Generator](#).

Here you see how black text with a 4 pixel rgb(194, 135, 83) colored shadow looks like.

```
.shadow{ text-shadow: 4px 4px 2px rgb(194, 135, 83) }
```

Border

The CSS property to change the border of an element to YUV 146.7130, -31.4105, 41.4707 is called "border".

The border property can be set on classes, ids or directly on the HTML element.

This example shows the color as border, it can be applied via the CSS property "border" or "border-color".

```
.border, #border, table{ border:4px solid rgb(194, 135, 83) }
```


If only the border color should be changed use the property `border-color`.

```
.border{ border-color:rgb(194, 135, 83) }
```

If you want to add a box shadow in that color use:

Here you see how a box with a 4 pixel `rgb(194, 135, 83)` colored shadow looks like.

```
.boxshadow{ -moz-box-shadow:4px 4px 4px  
4px rgb(194, 135, 83); -webkit-box-  
shadow:4px 4px 4px 4px rgb(194, 135, 83);  
box-shadow:4px 4px 4px 4px rgb(194, 135,  
83) }
```

Background

The CSS property to change the background color of an element to YUV 146.7130, -31.4105, 41.4707 is called "background". The background property can be set on classes, ids or directly on the HTML element.

```
.background, #background, body{  
background: rgb(194, 135, 83) }
```

If only the background color should be changed can be used:

```
.background{ background-color: rgb(194,  
135, 83) }
```

This example shows the color as background, it is applied via the CSS property "background".

To optimize and compress your CSS code, you can use our [online CSS compressor and optimizer](#) based on csstidy. If you want to create a linear or radial gradient as background or border, check our [CSS Gradient Generator](#).

Hey! You found this booklet interesting? Support Converting Colors with the new Membership Option!

The pro membership hides all ads, plus gives you double the colors in the color bucket, and more awesome pro features!

[Learn more, Memberships starting at \\$2.50/m!](#)

**Follow me
on Twitter!**

@ConvertingColor