

Converting Colors

YUV(147.0190, -22.1944,
25.4163)

Have a look what the booklet for
YUV(147.0190, -22.1944, 25.4163)
contains.

YUV(147.0190, -22.1944, 25.4163)	3
<i>Conversions</i>	4
<i>Details</i>	6
<i>Harmonies</i>	12
<i>Previews</i>	24
<i>Color Blindness Simulation</i>	28
<i>CSS Examples</i>	31

Color

**YUV(147.0190, -22.1944,
25.4163)**

Conversions

Conversions Part 1

Format	Color
Hex	B08D66
RGB	176, 141, 102
RGB Percent	69%, 55%, 40%
CMY	0.3098, 0.4471, 0.6000
CMYK	0.00, 0.20, 0.42, 0.31
HSL	32°, 32%, 55%
HSV	32°, 42%, 69%
XYZ	29.8276, 29.2392, 16.6420
YIQ	147.0190, 33.3790, -4.7090

Conversions

Conversions Part 2

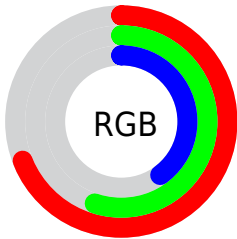
Format	Color
RYB	168, 176, 102
Decimal	11570534
CIELab	60.99, 7.92, 25.81
CIELCh	61, 26.999, 72.949
Yxy	29.2392, 0.3940, 0.3862
Android (android.graphics.Color)	4289760614 (0xFFB08D66)
YUV	147.0190, -22.1944, 25.4163
Hunter-Lab	54.0733, 3.8352, 19.6037

Details

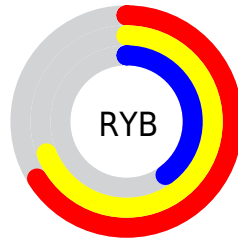
The YUV color **147.0190, -22.1944, 25.4163** is a dark color, and the websafe version is hex **CC9966**. A complement of this color would be **130.9810, 22.1944, -25.4163**, and the grayscale version is **147.0000, 0.0000, 0.0000**.

A 20% lighter version of the original color is **201.5740, -23.9470, 27.5606**, and **96.0510, -20.7311, 22.7573** is the 20% darker color. If you saturate the color by 10%, you get **140.2710, -27.7416, 31.3343**, and if you desaturate by 10%, it is **153.7670, -16.6471, 19.4983**.

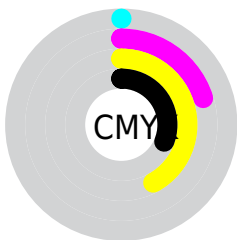
Distribution



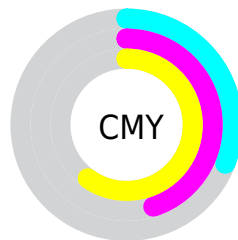
- Red (69%)
- Green (55%)
- Blue (40%)



- Red (66%)
- Yellow (69%)
- Blue (40%)



- Cyan (0%)
- Magenta (20%)
- Yellow (42%)
- Black (31%)



- Cyan (31%)
- Magenta (45%)
- Yellow (60%)

Brightness & Saturation Gradients

These gradients show how the YUV color 147.0190, -22.1944, 25.4163 changes by changing the brightness by 10 percent. The first figure shows a shift by +10% for each color and the second figure -10%.

Similar to the brightness gradients but the following saturation gradients show a change of the YUV color 147.0190, -22.1944, 25.4163 by changing the saturation by 10% instead.

■ 147.0190,
-22.1944, 25.4163

■ 147.0190,
-22.1944, 25.4163

255.0000, 0.0000,
0.0000

■ 120.9480,
-21.1734, 24.6016

■ 201.5740,
-23.9470, 27.5606

■ 96.0510, -20.7311,
22.7573

■ 227.0790,
-23.2099, 24.4867

■ 72.2680, -19.8521,
20.8130

■ 247.2940,
-19.3719, 6.7582

■ 48.4850, -18.9731,
18.8687

■ 252.8340, -8.2992,
1.8996

■ 28.7280, -14.1629,
16.0245

■ 6.5780, -3.2430,
13.5251

■ 0.0000, 0.0000,

0.0000

■ 147.0190,
-22.1944, 25.4163

■ 147.0190,
-22.1944, 25.4163

■ 140.2710,
-27.7416, 31.3343

■ 153.7670,
-16.6471, 19.4983

■ 133.0500,
-32.5626, 37.6672

■ 160.9880,
-11.8261, 13.1655

■ 126.3020,
-38.1099, 43.5851

■ 167.7360, -6.2788,
7.2475

■ 119.6680,
-43.2203, 49.4032

■ 174.3700, -1.1684,
1.4295

■ 112.3330,
-48.4782, 55.8360

■ 181.7050, 4.0894,
-5.0033

■ 107.2150,
-52.8570, 60.3244

■ 188.4530, 9.6367,
-10.9213

■ 195.0870, 14.7471,
-16.7393

■ 202.4220, 20.0050,
-23.1721

■ 208.4860, 22.9314,
-28.4902

Harmonies

Analogous

The Analogous color harmony consists of three colors that are next to each other on the color wheel.



148.9910, -16.2646, 36.8419



147.0190, -22.1944, 25.4163



144.9090, -22.1401, 7.9728

Triad

The Triadic color harmony groups three colors that are evenly spaced from another and form a triangle on the color wheel.



147.0190, -22.1944, 25.4163



134.5420, 11.0718, -51.3413



149.9040, 15.8233, 11.4852

Complementary

The Complementary color scheme is a pair of colors which are on the opposite of each other on the color wheel.



147.0190, -22.1944, 25.4163



130.9810, 22.1944, -25.4163

Split Complementary

Split-complementary colors differ from the complementary color scheme. The scheme consists of three colors, the original color and two neighbors of the complement color.



146.8730, 22.7406, -13.9206



147.0190, -22.1944, 25.4163



134.6800, 21.8498, -54.9704

Square

The Square scheme is like the rectangle color scheme, but the four colors are evenly spaced on the color wheel.



147.0190, -22.1944, 25.4163



137.9820, -2.9491, -34.1872



140.4030, 25.4373, -38.9414



150.9790, 5.4334, 30.7134

Rectangle

The Rectangle color scheme consists of four colors that form a rectangle on the color wheel.



147.0190, -22.1944, 25.4163



143.2600, -17.8762, -6.3670



140.4030, 25.4373, -38.9414



149.5440, 18.4658, 3.9079

Sweetspot

The Sweet Spot groups the original color and five complimentary colors.



147.0190, -22.1944, 25.4163



217.7750, -8.7631, 10.7213



128.2300, 4.8166, 41.8943



107.5510, -5.6946, 6.5328



242.0000, 0.0000, 0.0000



115.0000, 0.0000, 0.0000

Same Dimension

The Same Dimension uses a secret algorithm to generate beautiful new colors.



147.0190, -22.1944, 25.4163



184.6050, -34.3153, 39.8114



167.2650, -32.1756, 6.7836



85.6260, -2.7736, 2.9590



93.2940, -45.9939, 52.3622



15.4050, -7.5947, 9.2918

Inverse Universe

The Inverse Universe completely reimagines the original color for something new.



130.9810, 22.1944, -25.4163



159.8080, 34.6047, -39.2966



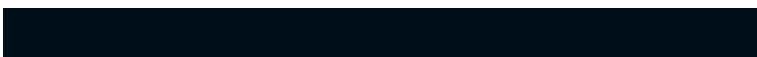
110.7350, 32.1756, -6.7836



83.9610, 2.4842, -3.4738



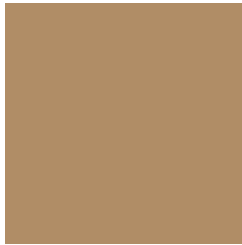
59.7060, 45.9939, -52.3622



10.0080, 7.8841, -8.7770

Previews

White Background



This preview shows how the YUV color 147.0190, -22.1944, 25.4163 looks on a white background.

Color Contrast Check

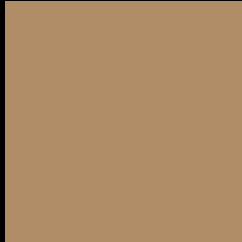
Large Text (above 18pt) WCAG AA ✓ Pass

Any Text WCAG AA × Fail

Large Text (above 18pt) WCAG AAA × Fail

Any Text WCAG AAA × Fail

Black Background



This preview shows how the YUV color 147.0190, -22.1944, 25.4163 looks on a black background.

Color Contrast Check

Large Text (above 18pt) WCAG AA ✓ Pass

Any Text WCAG AA ✓ Pass

Large Text (above 18pt) WCAG AAA ✓ Pass

Any Text WCAG AAA × Fail

If you want to check with other color combinations, try the [Color Contrast Checker](#).

YUV 147.0190, -22.1944, 25.4163

Background



This preview shows how black text looks on a background with the YUV color 147.0190, -22.1944, 25.4163.



This preview shows how white text looks on a background with the YUV color 147.0190, -22.1944, 25.4163.

25.4163.

Color Blindness Simulation

Color vision deficiency is a very complex topic, and I could not describe the different causes any better than Wikipedia does, so if you want to learn more, you should check out their [article about color blindness](#).

Dichromacy



Original Color

147.0190, -22.1944, 25.4163

Protanopia

145.8000, -20.1144, 11.5764

Deuteranopia

147.0190, -22.1944, 25.4163



Tritanopia

149.7090, -1.8285, 26.5652

Trichromacy



Original Color

147.0190, -22.1944, 25.4163

Protanomaly

146.3060, -20.8569, 16.3946

Deuteranomaly

147.0190, -22.1944, 25.4163

Tritanomaly

148.7600, -9.2487, 26.5205

Monochromacy



Original Color

147.0190, -22.1944, 25.4163

Achromatopsia

147.0000, 0.0000, 0.0000

Achromatomaly

147.2910, -8.0315, 9.3918

CSS Examples

Text

The CSS property to change the color of the text to YUV 147.0190, -22.1944, 25.4163 is called "color". The color property can be set on classes, ids or directly on the HTML element.

This example shows how text in the color `rgb(176, 141, 102)` looks like.

```
.text, #text, p{  
    color:rgb(176, 141, 102)  
}
```

If you want to add a text shadow in that color use the text-shadow property, you can generate a text shadow directly with our [CSS Text Shadow Generator](#).

Here you see how black text with a 4 pixel rgb(176, 141, 102) colored shadow looks like.

```
.shadow{ text-shadow: 4px 4px 2px rgb(176, 141, 102) }
```

Border

The CSS property to change the border of an element to YUV 147.0190, -22.1944, 25.4163 is called "border".

The border property can be set on classes, ids or directly on the HTML element.

This example shows the color as border, it can be applied via the CSS property "border" or "border-color".

```
.border, #border, table{ border:4px solid rgb(176, 141, 102) }
```


If only the border color should be changed use the property `border-color`.

```
.border{ border-color:rgb(176, 141, 102) }
```

If you want to add a box shadow in that color use:

Here you see how a box with a 4 pixel `rgb(176, 141, 102)` colored shadow looks like.

```
.boxshadow{ -moz-box-shadow:4px 4px 4px  
4px rgb(176, 141, 102); -webkit-box-  
shadow:4px 4px 4px 4px rgb(176, 141, 102);  
box-shadow:4px 4px 4px 4px rgb(176, 141,  
102) }
```

Background

The CSS property to change the background color of an element to YUV 147.0190, -22.1944, 25.4163 is called "background". The background property can be set on classes, ids or directly on the HTML element.

```
.background, #background, body{  
background: rgb(176, 141, 102) }
```

If only the background color should be changed can be used:

```
.background{ background-color: rgb(176,  
141, 102) }
```

This example shows the color as background, it is applied via the CSS property "background".

To optimize and compress your CSS code, you can use our [online CSS compressor and optimizer](#) based on csstidy. If you want to create a linear or radial gradient as background or border, check our [CSS Gradient Generator](#).

Hey! You found this booklet interesting? Support Converting Colors with the new Membership Option!

The pro membership hides all ads, plus gives you double the colors in the color bucket, and more awesome pro features!

[Learn more, Memberships starting at \\$2.50/m!](#)

**Follow me
on Twitter!**

@ConvertingColor