

Converting Colors

YUV(147.0200, 6.8921, 76.2815)

Have a look what the booklet for
YUV(147.0200, 6.8921, 76.2815)
contains.

YUV(147.0200, 6.8921, 76.2815)	3
<i>Conversions</i>	4
<i>Details</i>	6
<i>Harmonies</i>	12
<i>Previews</i>	24
<i>Color Blindness Simulation</i>	28
<i>CSS Examples</i>	31

Color

**YUV(147.0200, 6.8921,
76.2815)**

Conversions

Conversions Part 1

Format	Color
Hex	EA64A1
RGB	234, 100, 161
RGB Percent	92%, 39%, 63%
CMY	0.0824, 0.6078, 0.3686
CMYK	0.00, 0.57, 0.31, 0.08
HSL	333°, 76%, 65%
HSV	333°, 57%, 92%
XYZ	44.9219, 29.1800, 36.9829
YIQ	147.0200, 60.2830, 47.3790

Conversions

Conversions Part 2

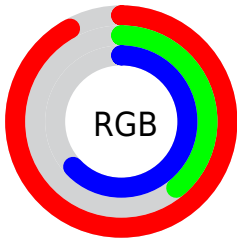
Format	Color
R_{YB}	234, 100, 161
Decimal	15361185
CIE Lab	60.94, 57.83, -6.89
CIE LCh	61, 58.242, 353.208
Yxy	29.1800, 0.4044, 0.2627
Android (android.graphics.Color)	4293551265 (0xFFEA64A1)
YUV	147.0200, 6.8921, 76.2815
Hunter-Lab	54.0185, 53.9086, -2.7790

Details

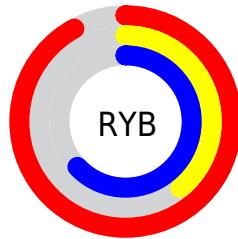
The YUV color **147.0200, 6.8921, 76.2815** is a light color, and the websafe version is hex **FF6699**. A complement of this color would be **186.9800, -6.8921, -76.2815**, and the grayscale version is **147.0000, 0.0000, 0.0000**.

A 20% lighter version of the original color is **192.4410, 11.6146, 54.8642**, and **89.5190, 10.0971, 74.9668** is the 20% darker color. If you saturate the color by 10%, you get **132.0370, 7.8698, 89.4216**, and if you desaturate by 10%, it is **162.0030, 5.9145, 63.1414**.

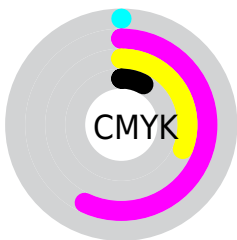
Distribution



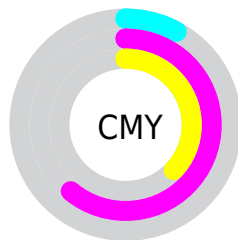
- Red (92%)
- Green (39%)
- Blue (63%)



- Red (92%)
- Yellow (39%)
- Blue (63%)



- Cyan (0%)
- Magenta (57%)
- Yellow (31%)
- Black (8%)



- Cyan (8%)
- Magenta (61%)
- Yellow (37%)

Brightness & Saturation Gradients

These gradients show how the YUV color 147.0200, 6.8921, 76.2815 changes by changing the brightness by 10 percent. The first figure shows a shift by +10% for each color and the second figure -10%.

Similar to the brightness gradients but the following saturation gradients show a change of the YUV color 147.0200, 6.8921, 76.2815 by changing the saturation by 10% instead.

147.0200, 6.8921,
76.2815

147.0200, 6.8921,
76.2815

255.0000, 0.0000,
0.0000

118.6500, 8.0606,
74.8520

192.4410, 11.6146,
54.8642

89.5190, 10.0971,
74.9668

212.0690, 15.7420,
37.6505

53.3440, 15.6064,
81.2593

230.3460, 12.1544,
21.6216

42.0510, 9.8349,
65.7303

247.3690, 3.7621,
6.6924

31.1710, 4.3527,
50.7160

21.4160, -0.6981,
37.3462

9.9810, -4.4276,

20.1877

■ 0.0000, 0.0000,
0.0000

■ 147.0200, 6.8921,
76.2815

■ 147.0200, 6.8921,
76.2815

■ 132.0370, 7.8698,
89.4216

■ 162.0030, 5.9145,
63.1414

■ 116.5810, 9.5736,
102.9765

■ 177.4590, 4.2107,
49.5865

■ 101.5980, 10.5512,
116.1166

■ 192.4420, 3.2331,
36.4464

■ 86.0280, 11.8182,
129.7714

■ 208.0120, 1.9661,
22.7915

■ 82.1640, 12.2441,
133.1602

■ 222.9950, 0.9885,
9.6514

■ 237.8640, -0.4260,
-3.3887

■ 248.1510, 0.9116,
-12.4104

■ 248.7210, 3.0955,
-12.9103

Harmonies

Analogous

The Analogous color harmony consists of three colors that are next to each other on the color wheel.



151.1200, 28.5348, 41.1138



147.0200, 6.8921, 76.2815



144.1740, -16.8478, 84.0394

Triad

The Triadic color harmony groups three colors that are evenly spaced from another and form a triangle on the color wheel.



147.0200, 6.8921, 76.2815



136.8390, -46.2626, -1.6128



124.1350, 51.6984, -108.8664

Complementary

The Complementary color scheme is a pair of colors which are on the opposite of each other on the color wheel.



147.0200, 6.8921, 76.2815



186.9800, -6.8921, -76.2815

Split Complementary

Split-complementary colors differ from the complementary color scheme. The scheme consists of three colors, the original color and two neighbors of the complement color.



122.1680, 31.4692, -107.1413



147.0200, 6.8921, 76.2815



127.1220, -22.2451, -51.8500

Square

The Square scheme is like the rectangle color scheme, but the four colors are evenly spaced on the color wheel.



147.0200, 6.8921, 76.2815



141.1860, -52.3497, 37.5479



115.5390, 8.6083, -101.3277



119.9580, 63.6177, -105.2032

Rectangle

The Rectangle color scheme consists of four colors that form a rectangle on the color wheel.



147.0200, 6.8921, 76.2815



143.8080, -31.9503, 74.7134



115.5390, 8.6083, -101.3277



123.8270, 45.4413, -108.5963

Sweetspot

The Sweet Spot groups the original color and five complimentary colors.



147.0200, 6.8921, 76.2815



227.0230, 1.9607, 24.5358



136.5050, 48.0650, 30.2521



111.1420, 1.4090, 14.7845



0.0000, 0.0000, 0.0000



128.0000, 0.0000, 0.0000

Same Dimension

The Same Dimension uses a secret algorithm to generate beautiful new colors.



147.0200, 6.8921, 76.2815



140.7440, 9.0002, 100.2025



142.4140, -20.9101, 80.3209



109.8590, 0.5625, 6.2627



63.4670, 9.1368, 103.0764



18.8820, 2.5232, 30.7985

Inverse Universe

The Inverse Universe completely reimagines the original color for something new.



147.0200, 6.8921, 76.2815



140.7440, 9.0002, 100.2025



191.5860, 20.9101, -80.3209



109.8590, 0.5625, 6.2627



63.4670, 9.1368, 103.0764



18.8820, 2.5232, 30.7985

Previews

White Background



This preview shows how the YUV color 147.0200, 6.8921, 76.2815 looks on a white background.

Color Contrast Check

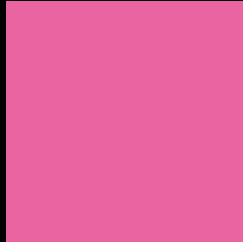
Large Text (above 18pt) WCAG AA ✓ Pass

Any Text WCAG AA ✗ Fail

Large Text (above 18pt) WCAG AAA ✗ Fail

Any Text WCAG AAA ✗ Fail

Black Background



This preview shows how the YUV color 147.0200, 6.8921, 76.2815 looks on a black background.

Color Contrast Check

Large Text (above 18pt) WCAG AA ✓ Pass

Any Text WCAG AA ✓ Pass

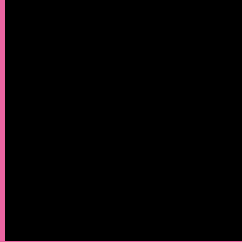
Large Text (above 18pt) WCAG AAA ✓ Pass

Any Text WCAG AAA × Fail

If you want to check with other color combinations, try the [Color Contrast Checker](#).

YUV 147.0200, 6.8921, 76.2815

Background



This preview shows how black text looks on a background with the YUV color 147.0200, 6.8921, 76.2815.



This preview shows how white text looks on a background with the YUV color 147.0200, 6.8921,

Color Blindness Simulation

Color vision deficiency is a very complex topic, and I could not describe the different causes any better than Wikipedia does, so if you want to learn more, you should check out their [article about color blindness](#).

Dichromacy



Original Color

147.0200, 6.8921, 76.2815

Protanopia

148.1400, 21.1300, -10.6468

Deuteranopia

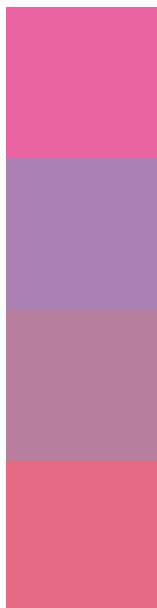
149.0380, 2.4463, 8.7367



Tritanopia

146.0910, -14.3419, 73.5882

Trichromacy



Original Color

147.0200, 6.8921, 76.2815

Protanomaly

147.6710, 15.9382, 21.3365

Deuteranomaly

148.0610, 4.4069, 33.2725

Tritanomaly

146.4530, -6.6323, 74.1477

Monochromacy



Original Color

147.0200, 6.8921, 76.2815

Achromatopsia

147.0000, 0.0000, 0.0000

Achromatomaly

147.1590, 2.3866, 27.9246

CSS Examples

Text

The CSS property to change the color of the text to YUV 147.0200, 6.8921, 76.2815 is called "color". The color property can be set on classes, ids or directly on the HTML element.

This example shows how text in the color `rgb(234, 100, 161)` looks like.

```
.text, #text, p{  
    color:rgb(234, 100, 161)  
}
```

If you want to add a text shadow in that color use the text-shadow property, you can generate a text shadow directly with our [CSS Text Shadow Generator](#).

Here you see how black text with a 4 pixel rgb(234, 100, 161) colored shadow looks like.

```
.shadow{ text-shadow: 4px 4px 2px rgb(234, 100, 161) }
```

Border

The CSS property to change the border of an element to YUV 147.0200, 6.8921, 76.2815 is called "border". The border property can be set on classes, ids or directly on the HTML element.

This example shows the color as border, it can be applied via the CSS property "border" or "border-color".

```
.border, #border, table{ border:4px solid rgb(234, 100, 161) }
```


If only the border color should be changed use the property `border-color`.

```
.border{ border-color:rgb(234, 100, 161) }
```

If you want to add a box shadow in that color use:

Here you see how a box with a 4 pixel `rgb(234, 100, 161)` colored shadow looks like.

```
.boxshadow{ -moz-box-shadow:4px 4px 4px  
4px rgb(234, 100, 161); -webkit-box-  
shadow:4px 4px 4px 4px rgb(234, 100, 161);  
box-shadow:4px 4px 4px 4px rgb(234, 100,  
161) }
```

Background

The CSS property to change the background color of an element to YUV 147.0200, 6.8921, 76.2815 is called "background". The background property can be set on classes, ids or directly on the HTML element.

```
.background, #background, body{  
background: rgb(234, 100, 161) }
```

If only the background color should be changed can be used:

```
.background{ background-color: rgb(234,  
100, 161) }
```

This example shows the color as background, it is applied via the CSS property "background".

To optimize and compress your CSS code, you can use our [online CSS compressor and optimizer](#) based on csstidy. If you want to create a linear or radial gradient as background or border, check our [CSS Gradient Generator](#).

Hey! You found this booklet interesting? Support Converting Colors with the new Membership Option!

The pro membership hides all ads, plus gives you double the colors in the color bucket, and more awesome pro features!

[Learn more, Memberships starting at \\$2.50/m!](#)

**Follow me
on Twitter!**

@ConvertingColor