

Converting Colors

YUV(147.1820, -5.5127,
88.4174)

Have a look what the booklet for
YUV(147.1820, -5.5127, 88.4174)
contains.

YUV(147.1820, -5.5127, 88.4174)	3
<i>Conversions</i>	4
<i>Details</i>	6
<i>Harmonies</i>	12
<i>Previews</i>	24
<i>Color Blindness Simulation</i>	28
<i>CSS Examples</i>	31

Color

**YUV(147.1820, -5.5127,
88.4174)**

Conversions

Conversions Part 1

Format	Color
Hex	F86288
RGB	248, 98, 136
RGB Percent	97%, 38%, 53%
CMY	0.0275, 0.6157, 0.4667
CMYK	0.00, 0.60, 0.45, 0.03
HSL	345°, 91%, 68%
HSV	345°, 60%, 97%
XYZ	47.5230, 30.4694, 26.6690
YIQ	147.1820, 77.2020, 43.6180

Conversions

Conversions Part 2

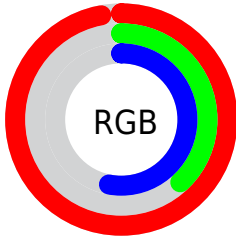
Format	Color
R _Y B	248, 98, 136
Decimal	16278152
CIE Lab	62.06, 60.40, 9.45
CIE LCh	62, 61.130, 8.889
Yxy	30.4694, 0.4541, 0.2911
Android (android.graphics.Color)	4294468232 (0xFFFF86288)
YUV	147.1820, -5.5127, 88.4174
Hunter-Lab	55.1991, 57.0791, 9.9939

Details

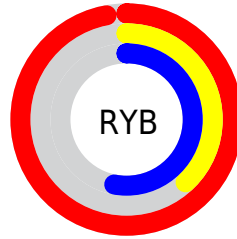
The YUV color **147.1820, -5.5127, 88.4174** is a light color, and the websafe version is hex **FF6699**. A complement of this color would be **198.8180, 5.5127, -88.4174**, and the grayscale version is **147.0000, 0.0000, 0.0000**.

A 20% lighter version of the original color is **188.7760, 0.1104, 58.0784**, and **87.5500, -0.2711, 87.2177** is the 20% darker color. If you saturate the color by 10%, you get **130.3410, -6.5771, 103.1869**, and if you desaturate by 10%, it is **164.0230, -4.4483, 73.6478**.

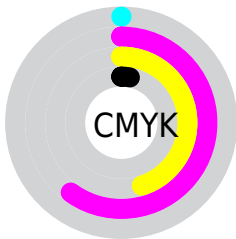
Distribution



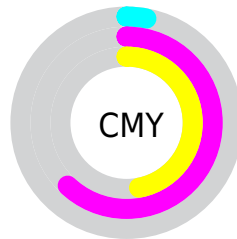
- Red (97%)
- Green (38%)
- Blue (53%)



- Red (97%)
- Yellow (38%)
- Blue (53%)



- Cyan (0%)
- Magenta (60%)
- Yellow (45%)
- Black (3%)



- Cyan (3%)
- Magenta (62%)
- Yellow (47%)

Brightness & Saturation Gradients

These gradients show how the YUV color 147.1820, -5.5127, 88.4174 changes by changing the brightness by 10 percent. The first figure shows a shift by +10% for each color and the second figure -10%.

Similar to the brightness gradients but the following saturation gradients show a change of the YUV color 147.1820, -5.5127, 88.4174 by changing the saturation by 10% instead.

■ 147.1820, -5.5127,
88.4174

■ 147.1820, -5.5127,
88.4174

■ 255.0000, 0.0000,
0.0000

■ 118.0400, -3.4707,
86.7879

■ 188.7760, 0.1104,
58.0784

■ 87.5500, -0.2711,
87.2177

■ 208.4040, 4.2378,
40.8647

■ 54.2390, 4.8122,
90.1214

■ 228.6190, 8.0758,
23.1361

■ 42.7610, -0.3752,
73.8776

■ 247.3690, 3.7621,
6.6924

■ 31.8100, -4.8363,
58.0486

■ 21.1580, -9.4449,
42.8344

■ 11.7750, -5.3121,

23.8763

■ 0.0000, 0.0000,
0.0000

■ 147.1820, -5.5127,
88.4174

■ 147.1820, -5.5127,
88.4174

■ 130.3410, -6.5771,
103.1869

■ 164.0230, -4.4483,
73.6478

■ 113.6140, -7.2047,
117.8565

■ 180.7500, -3.8207,
58.9783

■ 97.3600, -8.5585,
132.1113

■ 197.0040, -2.4670,
44.7235

■ 81.3340, -9.0387,
146.1661

■ 213.7310, -1.8394,
30.0539

■ 230.5720, -0.7750,
15.2844

■ 247.2990, -0.1474,
0.6148

■ 252.9070, 1.0318,
-4.3034

Harmonies

Analogous

The Analogous color harmony consists of three colors that are next to each other on the color wheel.



152.0540, 18.7074, 66.6046



147.1820, -5.5127, 88.4174



146.3080, -30.2248, 81.2909

Triad

The Triadic color harmony groups three colors that are evenly spaced from another and form a triangle on the color wheel.



147.1820, -5.5127, 88.4174



135.2640, -37.5982, -27.4185



126.0560, 61.5974, -110.5511

Complementary

The Complementary color scheme is a pair of colors which are on the opposite of each other on the color wheel.



147.1820, -5.5127, 88.4174



198.8180, 5.5127, -88.4174

Split Complementary

Split-complementary colors differ from the complementary color scheme. The scheme consists of three colors, the original color and two neighbors of the complement color.



126.8760, 44.4311, -111.2703



147.1820, -5.5127, 88.4174



113.9770, -2.4537, -99.9578

Square

The Square scheme is like the rectangle color scheme, but the four colors are evenly spaced on the color wheel.



147.1820, -5.5127, 88.4174



141.1530, -55.7844, 19.1598



122.1220, 21.1389, -107.1010



136.2450, 58.5462, -65.1129

Rectangle

The Rectangle color scheme consists of four colors that form a rectangle on the color wheel.



147.1820, -5.5127, 88.4174



146.4250, -44.5795, 65.4023



122.1220, 21.1389, -107.1010



127.3780, 56.5086, -111.7105

Sweetspot

The Sweet Spot groups the original color and five complimentary colors.



147.1820, -5.5127, 88.4174



224.1220, -1.5391, 27.0800



147.9900, 49.3049, 52.6288



108.5830, -0.7804, 17.0287



0.0000, 0.0000, 0.0000



128.0000, 0.0000, 0.0000

Same Dimension

The Same Dimension uses a secret algorithm to generate beautiful new colors.



147.1820, -5.5127, 88.4174



129.9720, -6.8882, 109.6496



163.3950, -32.2397, 74.1986



116.3430, -0.1691, 7.5922



61.9830, -6.8936, 111.3939



20.0630, -2.0031, 35.9017

Inverse Universe

The Inverse Universe completely reimagines the original color for something new.



147.1820, -5.5127, 88.4174



129.9720, -6.8882, 109.6496



182.6050, 32.2397, -74.1986



116.3430, -0.1691, 7.5922



61.9830, -6.8936, 111.3939



20.0630, -2.0031, 35.9017

Previews

White Background



This preview shows how the YUV color 147.1820, -5.5127, 88.4174 looks on a white background.

Color Contrast Check

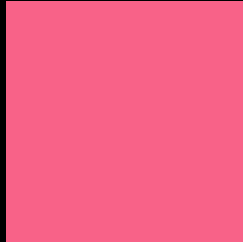
Large Text (above 18pt) WCAG AA × Fail

Any Text WCAG AA × Fail

Large Text (above 18pt) WCAG AAA × Fail

Any Text WCAG AAA × Fail

Black Background



This preview shows how the YUV color 147.1820, -5.5127, 88.4174 looks on a black background.

Color Contrast Check

Large Text (above 18pt) WCAG AA ✓ Pass

Any Text WCAG AA ✓ Pass

Large Text (above 18pt) WCAG AAA ✓ Pass

Any Text WCAG AAA ✓ Pass

If you want to check with other color combinations, try the [Color Contrast Checker](#).

YUV 147.1820, -5.5127, 88.4174

Background



This preview shows how black text looks on a background with the YUV color 147.1820, -5.5127, 88.4174.



This preview shows how white text looks on a background with the YUV color 147.1820, -5.5127,

Color Blindness Simulation

Color vision deficiency is a very complex topic, and I could not describe the different causes any better than Wikipedia does, so if you want to learn more, you should check out their [article about color blindness](#).

Dichromacy



Original Color

147.1820, -5.5127, 88.4174

Protanopia

150.8240, 6.9888, -1.5996

Deuteranopia

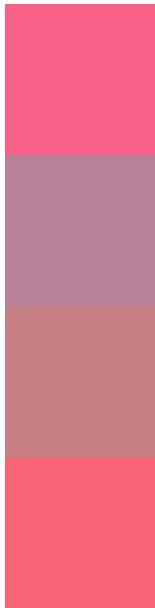
151.2490, -10.9688, 18.1986



Tritanopia

146.5550, -18.0216, 87.2133

Trichromacy



Original Color

147.1820, -5.5127, 88.4174

Protanomaly

149.1810, 2.3758, 31.4133

Deuteranomaly

149.9840, -8.8661, 43.8640

Tritanomaly

146.7060, -13.6591, 87.9578

Monochromacy



Original Color

147.1820, -5.5127, 88.4174

Achromatopsia

147.0000, 0.0000, 0.0000

Achromatomaly

147.0410, -1.9922, 32.4130

CSS Examples

Text

The CSS property to change the color of the text to YUV 147.1820, -5.5127, 88.4174 is called "color". The color property can be set on classes, ids or directly on the HTML element.

This example shows how text in the color `rgb(248, 98, 136)` looks like.

```
.text, #text, p{  
    color:rgb(248, 98, 136)  
}
```

If you want to add a text shadow in that color use the text-shadow property, you can generate a text shadow directly with our [CSS Text Shadow Generator](#).

Here you see how black text with a 4 pixel rgb(248, 98, 136) colored shadow looks like.

```
.shadow{ text-shadow: 4px 4px 2px rgb(248, 98, 136) }
```

Border

The CSS property to change the border of an element to YUV 147.1820, -5.5127, 88.4174 is called "border". The border property can be set on classes, ids or directly on the HTML element.

This example shows the color as border, it can be applied via the CSS property "border" or "border-color".

```
.border, #border, table{ border:4px solid rgb(248, 98, 136) }
```


If only the border color should be changed use the property border-color.

```
.border{ border-color:rgb(248, 98, 136) }
```

If you want to add a box shadow in that color use:

Here you see how a box with a 4 pixel rgb(248, 98, 136) colored shadow looks like.

```
.boxshadow{ -moz-box-shadow:4px 4px 4px  
4px rgb(248, 98, 136); -webkit-box-  
shadow:4px 4px 4px 4px rgb(248, 98, 136);  
box-shadow:4px 4px 4px 4px rgb(248, 98,  
136) }
```

Background

The CSS property to change the background color of an element to YUV 147.1820, -5.5127, 88.4174 is called "background". The background property can be set on classes, ids or directly on the HTML element.

```
.background, #background, body{  
background: rgb(248, 98, 136) }
```

If only the background color should be changed can be used:

```
.background{ background-color: rgb(248, 98,  
136) }
```

This example shows the color as background, it is applied via the CSS property "background".

To optimize and compress your CSS code, you can use our [online CSS compressor and optimizer](#) based on csstidy. If you want to create a linear or radial gradient as background or border, check our [CSS Gradient Generator](#).

Hey! You found this booklet interesting? Support Converting Colors with the new Membership Option!

The pro membership hides all ads, plus gives you double the colors in the color bucket, and more awesome pro features!

[Learn more, Memberships starting at \\$2.50/m!](#)

**Follow me
on Twitter!**

@ConvertingColor