

Converting Colors

YUV(147.2660, -30.2041,
27.8307)

Have a look what the booklet for
YUV(147.2660, -30.2041, 27.8307)
contains.

YUV(147.2660, -30.2041, 27.8307)	3
<i>Conversions</i>	4
<i>Details</i>	6
<i>Harmonies</i>	12
<i>Previews</i>	24
<i>Color Blindness Simulation</i>	28
<i>CSS Examples</i>	31

Color

**YUV(147.2660, -30.2041,
27.8307)**

Conversions

Conversions Part 1

Format	Color
Hex	B38F56
RGB	179, 143, 86
RGB Percent	70%, 56%, 34%
CMY	0.2980, 0.4392, 0.6627
CMYK	0.00, 0.20, 0.52, 0.30
HSL	37°, 38%, 52%
HSV	37°, 52%, 70%
XYZ	30.0926, 29.9005, 12.9894
YIQ	147.2660, 39.7530, -10.0950

Conversions

Conversions Part 2

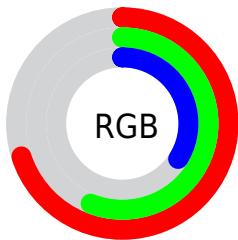
Format	Color
R_{YB}	145, 179, 86
Decimal	11767638
CIE _{Lab}	61.57, 6.44, 35.28
CIE _{LCh}	62, 35.865, 79.662
Yxy	29.9005, 0.4123, 0.4097
Android (android.graphics.Color)	4289957718 (0xFFB38F56)
YUV	147.2660, -30.2041, 27.8307
Hunter-Lab	54.6814, 2.5408, 24.1928

Details

The YUV color **147.2660, -30.2041, 27.8307** is a dark color, and the websafe version is hex **CC9966**. A complement of this color would be **117.7340, 30.2041, -27.8307**, and the grayscale version is **148.0000, 0.0000, 0.0000**.

A 20% lighter version of the original color is **202.1200, -32.1042, 30.5898**, and **95.9990, -28.5935, 24.5569** is the 20% darker color. If you saturate the color by 10%, you get **141.1050, -36.0408, 33.2339**, and if you desaturate by 10%, it is **153.4270, -24.3675, 22.4275**.

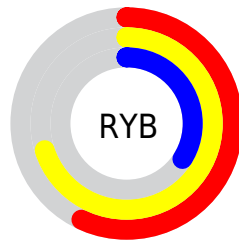
Distribution



Red (70%)

Green (56%)

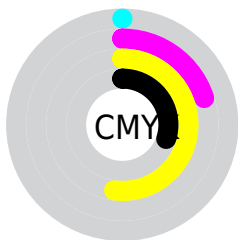
Blue (34%)



Red (57%)

Yellow (70%)

Blue (34%)

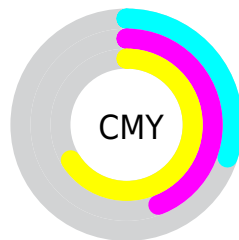


Cyan (0%)

Magenta (20%)

Yellow (52%)

Black (30%)



Cyan (30%)

Magenta (44%)

Yellow (66%)

Brightness & Saturation Gradients

These gradients show how the YUV color 147.2660, -30.2041, 27.8307 changes by changing the brightness by 10 percent. The first figure shows a shift by +10% for each color and the second figure -10%.

Similar to the brightness gradients but the following saturation gradients show a change of the YUV color 147.2660, -30.2041, 27.8307 by changing the saturation by 10% instead.

■ 147.2660,
-30.2041, 27.8307

■ 147.2660,
-30.2041, 27.8307

■ 255.0000, 0.0000,
0.0000

■ 120.8960,
-29.0357, 26.4012

■ 202.1200,
-32.1042, 30.5898

■ 95.9990, -28.5935,
24.5569

■ 226.9020,
-31.5037, 24.6419

■ 71.2160, -27.7145,
22.6126

■ 246.5300,
-27.3763, 7.4282

■ 49.1170, -24.2147,
20.0684

■ 250.8960,
-15.7247, 3.5992

■ 29.6030, -14.5943,
14.3802

■ 254.2020, -3.0576,
0.6998

■ 6.5780, -3.2430,
13.5251

■ 0.0000, 0.0000,

0.0000

■ 147.2660,
-30.2041, 27.8307

■ 147.2660,
-30.2041, 27.8307

■ 141.1050,
-36.0408, 33.2339

■ 153.4270,
-24.3675, 22.4275

■ 134.9440,
-41.8774, 38.6371

■ 159.5880,
-18.5309, 17.0243

■ 128.7830,
-47.7140, 44.0403

■ 165.7490,
-12.6943, 11.6211

■ 122.6220,
-53.5506, 49.4435

■ 171.9100, -6.8576,
6.2179

■ 118.0910,
-58.2189, 53.4172

■ 178.0710, -1.0210,
0.8147

■ 184.1180, 4.3788,
-4.4885

■ 190.2790, 10.2155,
-9.8917

■ 195.8530, 16.3415,
-14.7801

■ 202.0140, 22.1781,
-20.1833

Harmonies

Analogous

The Analogous color harmony consists of three colors that are next to each other on the color wheel.



149.2110, -23.2750, 45.4190



147.2660, -30.2041, 27.8307



144.0950, -27.6548, 3.4247

Triad

The Triadic color harmony groups three colors that are evenly spaced from another and form a triangle on the color wheel.



147.2660, -30.2041, 27.8307



116.1210, 26.0693, -101.8381



152.9530, 18.2642, 21.9662

Complementary

The Complementary color scheme is a pair of colors which are on the opposite of each other on the color wheel.



147.2660, -30.2041, 27.8307



117.7340, 30.2041, -27.8307

Split Complementary

Split-complementary colors differ from the complementary color scheme. The scheme consists of three colors, the original color and two neighbors of the complement color.



149.4910, 28.8449, -11.8316



147.2660, -30.2041, 27.8307



117.4380, 38.7311, -102.9931

Square

The Square scheme is like the rectangle color scheme, but the four colors are evenly spaced on the color wheel.



147.2660, -30.2041, 27.8307



132.9900, 1.4839, -56.1192



139.2580, 35.3688, -51.0923



152.4260, 4.2270, 44.3534

Rectangle

The Rectangle color scheme consists of four colors that form a rectangle on the color wheel.



147.2660, -30.2041, 27.8307



141.9940, -21.1960, -14.9037



139.2580, 35.3688, -51.0923



152.3260, 22.5173, 11.1151

Sweetspot

The Sweet Spot groups the original color and five complimentary colors.



147.2660, -30.2041, 27.8307



219.5640, -12.1101, 10.9064



118.0250, 2.4527, 53.4751



109.7960, -7.2944, 6.3179



245.0000, 0.0000, 0.0000



117.0000, 0.0000, 0.0000

Same Dimension

The Same Dimension uses a secret algorithm to generate beautiful new colors.



147.2660, -30.2041, 27.8307



182.7120, -46.6930, 43.2256



165.7070, -39.2956, 3.7650



86.2130, -3.0630, 2.4442



100.9250, -49.7560, 45.6698



17.1660, -8.4628, 7.7474

Inverse Universe

The Inverse Universe completely reimagines the original color for something new.



117.7340, 30.2041, -27.8307



137.2880, 46.6930, -43.2256



99.2930, 39.2956, -3.7650



83.3740, 2.7736, -2.9590



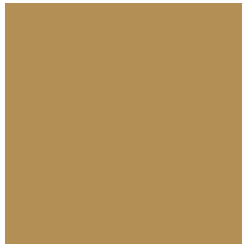
52.0750, 49.7560, -45.6698



8.8340, 8.4628, -7.7474

Previews

White Background



This preview shows how the YUV color 147.2660, -30.2041, 27.8307 looks on a white background.

Color Contrast Check

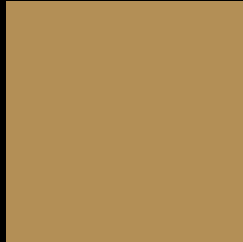
Large Text (above 18pt) WCAG AA ✓ Pass

Any Text WCAG AA × Fail

Large Text (above 18pt) WCAG AAA × Fail

Any Text WCAG AAA × Fail

Black Background



This preview shows how the YUV color 147.2660, -30.2041, 27.8307 looks on a black background.

Color Contrast Check

Large Text (above 18pt) WCAG AA ✓ Pass

Any Text WCAG AA ✓ Pass

Large Text (above 18pt) WCAG AAA ✓ Pass

Any Text WCAG AAA × Fail

If you want to check with other color combinations, try the [Color Contrast Checker](#).

YUV 147.2660, -30.2041, 27.8307

Background



This preview shows how black text looks on a background with the YUV color 147.2660, -30.2041, 27.8307.



This preview shows how white text looks on a background with the YUV color 147.2660, -30.2041,

Color Blindness Simulation

Color vision deficiency is a very complex topic, and I could not describe the different causes any better than Wikipedia does, so if you want to learn more, you should check out their [article about color blindness](#).

Dichromacy



Original Color

147.2660, -30.2041, 27.8307

Protanopia

146.2320, -28.7084, 14.7055

Deuteranopia

147.2770, -30.2096, 29.5751



Tritanopia

151.4920, -2.7076, 28.5095

Trichromacy



Original Color

147.2660, -30.2041, 27.8307

Protanomaly

146.7380, -29.4508, 19.5238

Deuteranomaly

146.9780, -30.0622, 28.9603

Tritanomaly

150.1470, -12.8905, 27.9351

Monochromacy



Original Color

147.2660, -30.2041, 27.8307

Achromatopsia

147.0000, 0.0000, 0.0000

Achromatomaly

147.4930, -11.0890, 10.0916

CSS Examples

Text

The CSS property to change the color of the text to YUV 147.2660, -30.2041, 27.8307 is called "color". The color property can be set on classes, ids or directly on the HTML element.

This example shows how text in the color `rgb(179, 143, 86)` looks like.

```
.text, #text, p{  
    color:rgb(179, 143, 86)  
}
```

If you want to add a text shadow in that color use the text-shadow property, you can generate a text shadow directly with our [CSS Text Shadow Generator](#).

Here you see how black text with a 4 pixel rgb(179, 143, 86) colored shadow looks like.

```
.shadow{ text-shadow: 4px 4px 2px rgb(179, 143, 86) }
```

Border

The CSS property to change the border of an element to YUV 147.2660, -30.2041, 27.8307 is called "border".

The border property can be set on classes, ids or directly on the HTML element.

This example shows the color as border, it can be applied via the CSS property "border" or "border-color".

```
.border, #border, table{ border:4px solid rgb(179, 143, 86) }
```


If only the border color should be changed use the property `border-color`.

```
.border{ border-color:rgb(179, 143, 86) }
```

If you want to add a box shadow in that color use:

Here you see how a box with a 4 pixel `rgb(179, 143, 86)` colored shadow looks like.

```
.boxshadow{ -moz-box-shadow:4px 4px 4px  
4px rgb(179, 143, 86); -webkit-box-  
shadow:4px 4px 4px 4px rgb(179, 143, 86);  
box-shadow:4px 4px 4px 4px rgb(179, 143,  
86) }
```

Background

The CSS property to change the background color of an element to YUV 147.2660, -30.2041, 27.8307 is called "background". The background property can be set on classes, ids or directly on the HTML element.

```
.background, #background, body{  
background: rgb(179, 143, 86) }
```

If only the background color should be changed can be used:

```
.background{ background-color: rgb(179,  
143, 86) }
```

This example shows the color as background, it is applied via the CSS property "background".

To optimize and compress your CSS code, you can use our [online CSS compressor and optimizer](#) based on csstidy. If you want to create a linear or radial gradient as background or border, check our [CSS Gradient Generator](#).

Hey! You found this booklet interesting? Support Converting Colors with the new Membership Option!

The pro membership hides all ads, plus gives you double the colors in the color bucket, and more awesome pro features!

[Learn more, Memberships starting at \\$2.50/m!](#)

**Follow me
on Twitter!**

@ConvertingColor