

Converting Colors

YUV(147.4160, -20.9111,
33.8382)

Have a look what the booklet for
YUV(147.4160, -20.9111, 33.8382)
contains.

YUV(147.4160, -20.9111, 33.8382)	3
<i>Conversions</i>	4
<i>Details</i>	6
<i>Harmonies</i>	12
<i>Previews</i>	24
<i>Color Blindness Simulation</i>	28
<i>CSS Examples</i>	31

Color

**YUV(147.4160, -20.9111,
33.8382)**

Conversions

Conversions Part 1

Format	Color
Hex	BA8869
RGB	186, 136, 105
RGB Percent	73%, 53%, 41%
CMY	0.2706, 0.4667, 0.5882
CMYK	0.00, 0.27, 0.44, 0.27
HSL	23°, 37%, 57%
HSV	23°, 44%, 73%
XYZ	31.6037, 29.0673, 17.3095
YIQ	147.4160, 39.7510, 0.9590

Conversions

Conversions Part 2

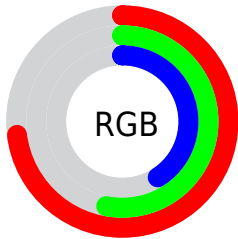
Format	Color
R_{YB}	186, 155, 105
Decimal	12224617
CIE _{Lab}	60.84, 15.18, 24.14
CIE _{LCh}	61, 28.518, 57.834
Yxy	29.0673, 0.4053, 0.3728
Android (android.graphics.Color)	4290414697 (0xFFBA8869)
YUV	147.4160, -20.9111, 33.8382
Hunter-Lab	53.9141, 10.2843, 18.7045

Details

The YUV color **147.4160, -20.9111, 33.8382** is a dark color, and the websafe version is hex **CC9966**. A complement of this color would be **143.5840, 20.9111, -33.8382**, and the grayscale version is **148.0000, 0.0000, 0.0000**.

A 20% lighter version of the original color is **201.6830, -22.5217, 37.1120**, and **96.1490, -19.3005, 30.5643** is the 20% darker color. If you saturate the color by 10%, you get **138.7930, -26.0269, 41.4005**, and if you desaturate by 10%, it is **156.0390, -15.7952, 26.2758**.

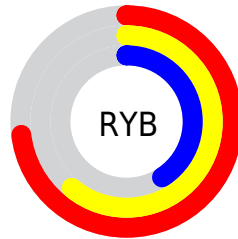
Distribution



Red (73%)

Green (53%)

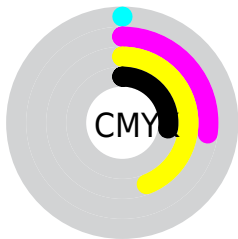
Blue (41%)



Red (73%)

Yellow (61%)

Blue (41%)

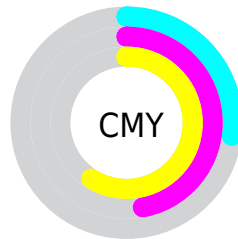


Cyan (0%)

Magenta (27%)

Yellow (44%)

Black (27%)



Cyan (27%)

Magenta (47%)

Yellow (59%)

Brightness & Saturation Gradients

These gradients show how the YUV color 147.4160, -20.9111, 33.8382 changes by changing the brightness by 10 percent. The first figure shows a shift by +10% for each color and the second figure -10%.

Similar to the brightness gradients but the following saturation gradients show a change of the YUV color 147.4160, -20.9111, 33.8382 by changing the saturation by 10% instead.

■ 147.4160,
-20.9111, 33.8382

■ 147.4160,
-20.9111, 33.8382

■ 255.0000, 0.0000,
0.0000

■ 121.6330,
-20.0321, 31.8939

■ 201.6830,
-22.5217, 37.1120

■ 96.1490, -19.3005,
30.5643

■ 224.4860,
-20.4526, 26.7608

■ 72.0670, -18.2740,
28.0052

■ 244.7010,
-16.6146, 9.0322

■ 48.3980, -16.9582,
25.9610

■ 253.2900, -6.5520,
1.4997

■ 27.0000, -13.3110,
22.8020

■ 9.2690, -4.5696,
19.0581

■ 0.0000, 0.0000,

0.0000

■ 147.4160,
-20.9111, 33.8382

■ 147.4160,
-20.9111, 33.8382

■ 138.7930,
-26.0269, 41.4005

■ 156.0390,
-15.7952, 26.2758

■ 129.6970,
-30.4166, 49.3777

■ 165.1350,
-11.4056, 18.2986

■ 121.0740,
-35.5325, 56.9401

■ 173.7580, -6.2897,
10.7362

■ 111.9780,
-39.9222, 64.9173

■ 182.8540, -1.9000,
2.7590

■ 103.3550,
-45.0380, 72.4797

■ 191.4770, 3.2158,
-4.8033

■ 97.2910, -47.9645,
77.7978

■ 200.6870, 8.0423,
-12.8805

■ 209.1960, 12.7214,
-20.3429

■ 218.4060, 17.5478,
-28.4201

■ 224.9770, 14.8013,
-34.1828

Harmonies

Analogous

The Analogous color harmony consists of three colors that are next to each other on the color wheel.



148.5770, -11.6235, 41.5900



147.4160, -20.9111, 33.8382



145.6930, -24.4986, 17.8092

Triad

The Triadic color harmony groups three colors that are evenly spaced from another and form a triangle on the color wheel.



147.4160, -20.9111, 33.8382



134.5550, 4.6564, -46.9677



148.7930, 20.8081, -0.6955

Complementary

The Complementary color scheme is a pair of colors which are on the opposite of each other on the color wheel.



147.4160, -20.9111, 33.8382



143.5840, 20.9111, -33.8382

Split Complementary

Split-complementary colors differ from the complementary color scheme. The scheme consists of three colors, the original color and two neighbors of the complement color.



143.3980, 26.4258, -29.2900



147.4160, -20.9111, 33.8382



131.7240, 18.3771, -61.1479

Square

The Square scheme is like the rectangle color scheme, but the four colors are evenly spaced on the color wheel.



147.4160, -20.9111, 33.8382



139.2020, -9.9596, -25.6102



135.5430, 26.3543, -53.0962



150.8300, 11.4228, 22.9511

Rectangle

The Rectangle color scheme consists of four colors that form a rectangle on the color wheel.



147.4160, -20.9111, 33.8382



143.7730, -22.5661, 4.5841



135.5430, 26.3543, -53.0962



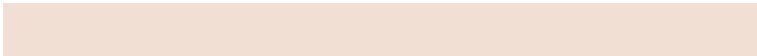
147.3080, 23.0192, -9.9171

Sweetspot

The Sweet Spot groups the original color and five complimentary colors.



147.4160, -20.9111, 33.8382



227.3130, -8.0423, 12.8805



135.0330, 10.3367, 44.6981



112.7900, -4.8265, 8.0772



250.0000, 0.0000, 0.0000



122.0000, 0.0000, 0.0000

Same Dimension

The Same Dimension uses a secret algorithm to generate beautiful new colors.



147.4160, -20.9111, 33.8382



181.8500, -32.4641, 52.7516



170.3090, -32.1973, 13.7610



87.4520, -2.1948, 3.9886



81.8640, -40.3590, 65.0173



14.8290, -7.3107, 11.5510

Inverse Universe

The Inverse Universe completely reimagines the original color for something new.



143.5840, 20.9111, -33.8382



176.1500, 32.4641, -52.7516



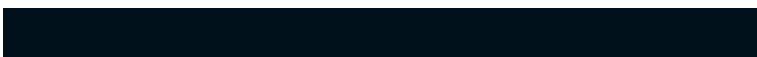
120.6910, 32.1973, -13.7610



86.9610, 2.4842, -3.4738



74.1360, 40.3590, -65.0173



13.1710, 7.3107, -11.5510

Previews

White Background



This preview shows how the YUV color 147.4160, -20.9111, 33.8382 looks on a white background.

Color Contrast Check

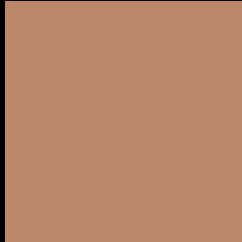
Large Text (above 18pt) WCAG AA ✓ Pass

Any Text WCAG AA × Fail

Large Text (above 18pt) WCAG AAA × Fail

Any Text WCAG AAA × Fail

Black Background



This preview shows how the YUV color 147.4160, -20.9111, 33.8382 looks on a black background.

Color Contrast Check

Large Text (above 18pt) WCAG AA ✓ Pass

Any Text WCAG AA ✓ Pass

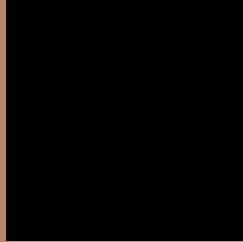
Large Text (above 18pt) WCAG AAA ✓ Pass

Any Text WCAG AAA × Fail

If you want to check with other color combinations, try the [Color Contrast Checker](#).

YUV 147.4160, -20.9111, 33.8382

Background



This preview shows how black text looks on a background with the YUV color 147.4160, -20.9111, 33.8382.



This preview shows how white text looks on a background with the YUV color 147.4160, -20.9111,

Color Blindness Simulation

Color vision deficiency is a very complex topic, and I could not describe the different causes any better than Wikipedia does, so if you want to learn more, you should check out their [article about color blindness](#).

Dichromacy



Original Color

147.4160, -20.9111, 33.8382

Protanopia

146.0710, -17.7830, 10.4617

Deuteranopia

146.9480, -21.1734, 24.6016



Tritanopia

149.4820, -4.1816, 34.6573

Trichromacy



Original Color

147.4160, -20.9111, 33.8382

Protanomaly

146.4850, -18.9731, 18.8687

Deuteranomaly

146.9700, -21.1842, 28.0903

Tritanomaly

148.8750, -10.2914, 34.3126

Monochromacy



Original Color

147.4160, -20.9111, 33.8382

Achromatopsia

147.0000, 0.0000, 0.0000

Achromatomaly

147.1280, -7.4581, 12.1657

CSS Examples

Text

The CSS property to change the color of the text to YUV 147.4160, -20.9111, 33.8382 is called "color". The color property can be set on classes, ids or directly on the HTML element.

This example shows how text in the color `rgb(186, 136, 105)` looks like.

```
.text, #text, p{  
    color:rgb(186, 136, 105)  
}
```

If you want to add a text shadow in that color use the text-shadow property, you can generate a text shadow directly with our [CSS Text Shadow Generator](#).

Here you see how black text with a 4 pixel rgb(186, 136, 105) colored shadow looks like.

```
.shadow{ text-shadow: 4px 4px 2px rgb(186, 136, 105) }
```

Border

The CSS property to change the border of an element to YUV 147.4160, -20.9111, 33.8382 is called "border".

The border property can be set on classes, ids or directly on the HTML element.

This example shows the color as border, it can be applied via the CSS property "border" or "border-color".

```
.border, #border, table{ border:4px solid rgb(186, 136, 105) }
```


If only the border color should be changed use the property `border-color`.

```
.border{ border-color:rgb(186, 136, 105) }
```

If you want to add a box shadow in that color use:

Here you see how a box with a 4 pixel `rgb(186, 136, 105)` colored shadow looks like.

```
.boxshadow{ -moz-box-shadow:4px 4px 4px  
4px rgb(186, 136, 105); -webkit-box-  
shadow:4px 4px 4px 4px rgb(186, 136, 105);  
box-shadow:4px 4px 4px 4px rgb(186, 136,  
105) }
```

Background

The CSS property to change the background color of an element to YUV 147.4160, -20.9111, 33.8382 is called "background". The background property can be set on classes, ids or directly on the HTML element.

```
.background, #background, body{  
background: rgb(186, 136, 105) }
```

If only the background color should be changed can be used:

```
.background{ background-color: rgb(186,  
136, 105) }
```

This example shows the color as background, it is applied via the CSS property "background".

To optimize and compress your CSS code, you can use our [online CSS compressor and optimizer](#) based on csstidy. If you want to create a linear or radial gradient as background or border, check our [CSS Gradient Generator](#).

Hey! You found this booklet interesting? Support Converting Colors with the new Membership Option!

The pro membership hides all ads, plus gives you double the colors in the color bucket, and more awesome pro features!

[Learn more, Memberships starting at \\$2.50/m!](#)

**Follow me
on Twitter!**

@ConvertingColor