

Converting Colors

YUV(147.4360, -17.9629,
21.5426)

Have a look what the booklet for
YUV(147.4360, -17.9629, 21.5426)
contains.

YUV(147.4360, -17.9629, 21.5426)	3
<i>Conversions</i>	4
<i>Details</i>	6
<i>Harmonies</i>	12
<i>Previews</i>	24
<i>Color Blindness Simulation</i>	28
<i>CSS Examples</i>	31

Color

**YUV(147.4360, -17.9629,
21.5426)**

Conversions

Conversions Part 1

Format	Color
Hex	AC8E6F
RGB	172, 142, 111
RGB Percent	67%, 56%, 44%
CMY	0.3255, 0.4431, 0.5647
CMYK	0.00, 0.17, 0.35, 0.33
HSL	30°, 27%, 55%
HSV	30°, 35%, 67%
XYZ	29.5555, 29.2644, 19.1298
YIQ	147.4360, 27.8310, -3.2810

Conversions

Conversions Part 2

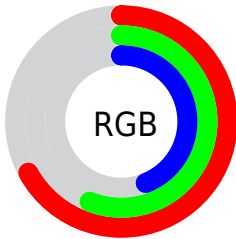
Format	Color
R_{YB}	170, 172, 111
Decimal	11308655
CIE Lab	61.01, 6.78, 20.77
CIE LCh	61, 21.847, 71.907
Yxy	29.2644, 0.3792, 0.3754
Android (android.graphics.Color)	4289498735 (0xFFAC8E6F)
YUV	147.4360, -17.9629, 21.5426
Hunter-Lab	54.0965, 2.8541, 16.9013

Details

The YUV color $147.4360, -17.9629, 21.5426$ is a dark color, and the websafe version is hex $CC9966$. A complement of this color would be $135.5640, 17.9629, -21.5426$, and the grayscale version is $148.0000, 0.0000, 0.0000$.

A 20% lighter version of the original color is $201.8060, -19.1314, 22.9721$, and $96.4680, -16.4997, 18.8836$ is the 20% darker color. If you saturate the color by 10%, you get $140.8020, -23.0734, 27.3606$, and if you desaturate by 10%, it is $154.0700, -12.8525, 15.7246$.

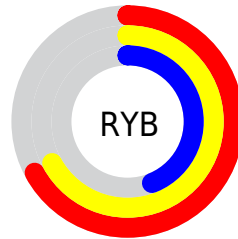
Distribution



Red (67%)

Green (56%)

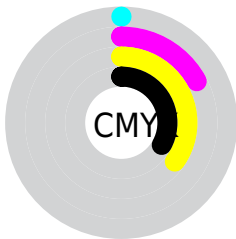
Blue (44%)



Red (67%)

Yellow (67%)

Blue (44%)

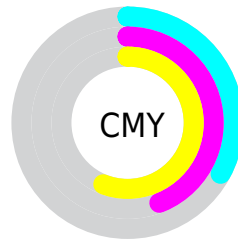


Cyan (0%)

Magenta (17%)

Yellow (35%)

Black (33%)



Cyan (33%)

Magenta (44%)

Yellow (56%)

Brightness & Saturation Gradients

These gradients show how the YUV color 147.4360, -17.9629, 21.5426 changes by changing the brightness by 10 percent. The first figure shows a shift by +10% for each color and the second figure -10%.

Similar to the brightness gradients but the following saturation gradients show a change of the YUV color 147.4360, -17.9629, 21.5426 by changing the saturation by 10% instead.

■ 147.4360,
-17.9629, 21.5426

■ 147.4360,
-17.9629, 21.5426

■ 255.0000, 0.0000,
0.0000

■ 121.2510,
-17.3787, 20.8279

■ 201.8060,
-19.1314, 22.9721

■ 96.4680, -16.4997,
18.8836

■ 229.3930,
-19.4207, 22.4573

■ 72.3970, -15.4787,
18.0688

■ 249.0210,
-15.2934, 5.2436

■ 49.6140, -14.5997,
16.1245

■ 253.9740, -3.9312,
0.8998

■ 28.1300, -13.8681,
14.7950

■ 5.9800, -2.9481,
12.2955

■ 0.0000, 0.0000,

0.0000

■ 147.4360,
-17.9629, 21.5426

■ 147.4360,
-17.9629, 21.5426

■ 140.8020,
-23.0734, 27.3606

■ 154.0700,
-12.8525, 15.7246

■ 133.5810,
-27.8944, 33.6935

■ 161.2910, -8.0315,
9.3918

■ 126.8330,
-33.4417, 39.6115

■ 168.0390, -2.4842,
3.4738

■ 119.6120,
-38.2627, 45.9443

■ 175.2600, 2.3368,
-2.8590

■ 112.9780,
-43.3732, 51.7623

■ 181.8940, 7.4473,
-8.6770

■ 105.7570,
-48.1942, 58.0951

■ 189.1150, 12.2683,
-15.0099

■ 102.4970,
-50.5310, 60.9541

■ 195.7490, 17.3787,
-20.8279

■ 203.0840, 22.6366,
-27.2607

■ 208.4640, 22.9422,
-31.9789

Harmonies

Analogous

The Analogous color harmony consists of three colors that are next to each other on the color wheel.



148.7560, -13.1907, 30.9090



147.4360, -17.9629, 21.5426



145.3480, -17.9196, 7.5878

Triad

The Triadic color harmony groups three colors that are evenly spaced from another and form a triangle on the color wheel.



147.4360, -17.9629, 21.5426



138.4080, 7.6869, -38.9458



150.0840, 12.7766, 8.6963

Complementary

The Complementary color scheme is a pair of colors which are on the opposite of each other on the color wheel.



147.4360, -17.9629, 21.5426



135.5640, 17.9629, -21.5426

Split Complementary

Split-complementary colors differ from the complementary color scheme. The scheme consists of three colors, the original color and two neighbors of the complement color.



146.8580, 18.8040, -11.2765



147.4360, -17.9629, 21.5426



139.2750, 16.1334, -41.4602

Square

The Square scheme is like the rectangle color scheme, but the four colors are evenly spaced on the color wheel.



147.4360, -17.9629, 21.5426



140.4390, -2.6814, -26.6950



142.6770, 19.8792, -29.5347



150.7070, 4.5814, 23.9360

Rectangle

The Rectangle color scheme consists of four colors that form a rectangle on the color wheel.



147.4360, -17.9629, 21.5426



143.7810, -14.6820, -4.1929



142.6770, 19.8792, -29.5347



149.3220, 15.1243, 2.3486

Sweetspot

The Sweet Spot groups the original color and five complimentary colors.



147.4360, -17.9629, 21.5426



214.2200, -7.0105, 8.5771



132.7730, 4.5489, 34.4021



106.2950, -4.0894, 5.0033



240.0000, 0.0000, 0.0000



112.0000, 0.0000, 0.0000

Same Dimension

The Same Dimension uses a secret algorithm to generate beautiful new colors.



147.4360, -17.9629, 21.5426



185.4670, -28.3312, 33.7934



165.0460, -26.6447, 6.0987



83.0390, -2.4842, 3.4738



89.4620, -44.1048, 53.0918



13.9210, -6.8631, 7.9623

Inverse Universe

The Inverse Universe completely reimagines the original color for something new.



135.5640, 17.9629, -21.5426



166.5330, 28.3312, -33.7934



117.9540, 26.6447, -6.0987



81.3740, 2.7736, -2.9590



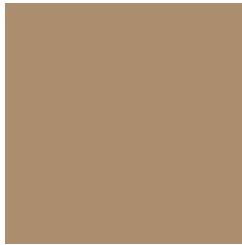
60.5380, 44.1048, -53.0918



9.0790, 6.8631, -7.9623

Previews

White Background



This preview shows how the YUV color 147.4360, -17.9629, 21.5426 looks on a white background.

Color Contrast Check

Large Text (above 18pt) WCAG AA ✓ Pass

Any Text WCAG AA × Fail

Large Text (above 18pt) WCAG AAA × Fail

Any Text WCAG AAA × Fail

Black Background



This preview shows how the YUV color 147.4360, -17.9629, 21.5426 looks on a black background.

Color Contrast Check

Large Text (above 18pt) WCAG AA ✓ Pass

Any Text WCAG AA ✓ Pass

Large Text (above 18pt) WCAG AAA ✓ Pass

Any Text WCAG AAA × Fail

If you want to check with other color combinations, try the [Color Contrast Checker](#).

YUV 147.4360, -17.9629, 21.5426

Background



This preview shows how black text looks on a background with the YUV color 147.4360, -17.9629, 21.5426.



This preview shows how white text looks on a background with the YUV color 147.4360, -17.9629, 21.5426.

Color Blindness Simulation

Color vision deficiency is a very complex topic, and I could not describe the different causes any better than Wikipedia does, so if you want to learn more, you should check out their [article about color blindness](#).

Dichromacy



Original Color

147.4360, -17.9629, 21.5426

Protanopia

146.1140, -16.3252, 9.5470

Deuteranopia

147.4470, -17.9684, 23.2870



Tritanopia

149.9150, -0.9441, 22.8765

Trichromacy



Original Color

147.4360, -17.9629, 21.5426

Protanomaly

146.3210, -16.9203, 13.7505

Deuteranomaly

147.1480, -17.8210, 22.6722

Tritanomaly

149.3080, -7.0538, 22.5319

Monochromacy



Original Color

147.4360, -17.9629, 21.5426

Achromatopsia

147.0000, 0.0000, 0.0000

Achromatomaly

147.0350, -6.4263, 7.8623

CSS Examples

Text

The CSS property to change the color of the text to YUV 147.4360, -17.9629, 21.5426 is called "color". The color property can be set on classes, ids or directly on the HTML element.

This example shows how text in the color `rgb(172, 142, 111)` looks like.

```
.text, #text, p{  
    color:rgb(172, 142, 111)  
}
```

If you want to add a text shadow in that color use the text-shadow property, you can generate a text shadow directly with our [CSS Text Shadow Generator](#).

Here you see how black text with a 4 pixel rgb(172, 142, 111) colored shadow looks like.

```
.shadow{ text-shadow: 4px 4px 2px rgb(172, 142, 111) }
```

Border

The CSS property to change the border of an element to YUV 147.4360, -17.9629, 21.5426 is called "border".

The border property can be set on classes, ids or directly on the HTML element.

This example shows the color as border, it can be applied via the CSS property "border" or "border-color".

```
.border, #border, table{ border:4px solid rgb(172, 142, 111) }
```


If only the border color should be changed use the property `border-color`.

```
.border{ border-color:rgb(172, 142, 111) }
```

If you want to add a box shadow in that color use:

Here you see how a box with a 4 pixel `rgb(172, 142, 111)` colored shadow looks like.

```
.boxshadow{ -moz-box-shadow:4px 4px 4px  
4px rgb(172, 142, 111); -webkit-box-  
shadow:4px 4px 4px 4px rgb(172, 142, 111);  
box-shadow:4px 4px 4px 4px rgb(172, 142,  
111) }
```

Background

The CSS property to change the background color of an element to YUV 147.4360, -17.9629, 21.5426 is called "background". The background property can be set on classes, ids or directly on the HTML element.

```
.background, #background, body{  
background: rgb(172, 142, 111) }
```

If only the background color should be changed can be used:

```
.background{ background-color: rgb(172,  
142, 111) }
```

This example shows the color as background, it is applied via the CSS property "background".

To optimize and compress your CSS code, you can use our [online CSS compressor and optimizer](#) based on csstidy. If you want to create a linear or radial gradient as background or border, check our [CSS Gradient Generator](#).

Hey! You found this booklet interesting? Support Converting Colors with the new Membership Option!

The pro membership hides all ads, plus gives you double the colors in the color bucket, and more awesome pro features!

[Learn more, Memberships starting at \\$2.50/m!](#)

**Follow me
on Twitter!**

@ConvertingColor