

Converting Colors

YUV(147.5110, -11.5909,
31.1239)

Have a look what the booklet for
YUV(147.5110, -11.5909, 31.1239)
contains.

YUV(147.5110, -11.5909, 31.1239)	3
<i>Conversions</i>	4
<i>Details</i>	6
<i>Harmonies</i>	12
<i>Previews</i>	24
<i>Color Blindness Simulation</i>	28
<i>CSS Examples</i>	31

Color

**YUV(147.5110, -11.5909,
31.1239)**

Conversions

Conversions Part 1

Format	Color
Hex	B7867C
RGB	183, 134, 124
RGB Percent	72%, 53%, 49%
CMY	0.2824, 0.4745, 0.5137
CMYK	0.00, 0.27, 0.32, 0.28
HSL	10°, 29%, 60%
HSV	10°, 32%, 72%
XYZ	31.6916, 28.5727, 22.9135
YIQ	147.5110, 32.4140, 7.2780

Conversions

Conversions Part 2

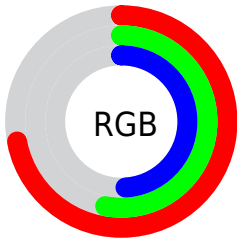
Format	Color
R _{YB}	183, 136, 124
Decimal	12027516
CIE Lab	60.40, 17.39, 12.77
CIE LCh	60, 21.576, 36.280
Yxy	28.5727, 0.3810, 0.3435
Android (android.graphics.Color)	4290217596 (0xFFB7867C)
YUV	147.5110, -11.5909, 31.1239
Hunter-Lab	53.4534, 12.2860, 12.0020

Details

The YUV color **147.5110, -11.5909, 31.1239** is a dark color, and the websafe version is hex **CC9999**. A complement of this color would be **159.4890, 11.5909, -31.1239**, and the grayscale version is **148.0000, 0.0000, 0.0000**.

A 20% lighter version of the original color is **201.7070, -12.1806, 33.5830**, and **96.4290, -10.5645, 28.5648** is the 20% darker color. If you saturate the color by 10%, you get **136.6540, -15.1124, 40.6454**, and if you desaturate by 10%, it is **158.3680, -8.0694, 21.6023**.

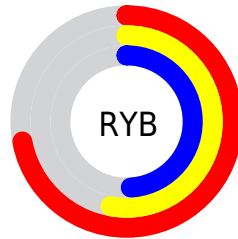
Distribution



Red (72%)

Green (53%)

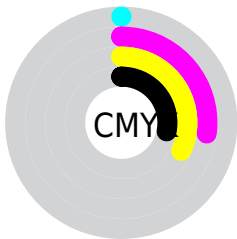
Blue (49%)



Red (72%)

Yellow (53%)

Blue (49%)

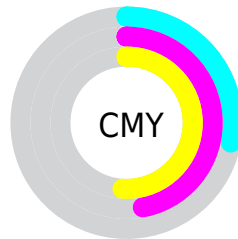


Cyan (0%)

Magenta (27%)

Yellow (32%)

Black (28%)



Cyan (28%)

Magenta (47%)

Yellow (51%)

Brightness & Saturation Gradients

These gradients show how the YUV color 147.5110, -11.5909, 31.1239 changes by changing the brightness by 10 percent. The first figure shows a shift by +10% for each color and the second figure -10%.

Similar to the brightness gradients but the following saturation gradients show a change of the YUV color 147.5110, -11.5909, 31.1239 by changing the saturation by 10% instead.

■ 147.5110,
-11.5909, 31.1239

■ 147.5110,
-11.5909, 31.1239

■ 255.0000, 0.0000,
0.0000

■ 121.6140,
-11.1487, 29.2795

■ 201.7070,
-12.1806, 33.5830

■ 96.4290, -10.5645,
28.5648

■ 225.7060,
-10.7011, 25.6908

■ 72.3470, -9.5381,
26.0057

■ 245.9210, -6.8631,
7.9623

■ 48.8630, -8.8065,
24.6761

■ 26.7380, -9.2378,
23.0318

■ 9.6820, -4.2802,
19.5729

■ 0.0000, 0.0000,

0.0000

■ 147.5110,
-11.5909, 31.1239

■ 147.5110,
-11.5909, 31.1239

■ 136.6540,
-15.1124, 40.6454

■ 158.3680, -8.0694,
21.6023

■ 125.6830,
-19.0707, 50.2670

■ 169.3390, -4.1111,
11.9807

■ 114.2390,
-22.3028, 60.3034

■ 180.7830, -0.8790,
1.9443

■ 103.3820,
-25.8243, 69.8250

■ 191.6400, 2.6425,
-7.5773

■ 92.5250, -29.3458,
79.3466

■ 202.6110, 6.6008,
-17.1988

■ 81.5540, -33.3041,
88.9681

■ 213.4680, 10.1223,
-26.7204

■ 72.9140, -35.9466,
96.5454

■ 224.3250, 13.6438,
-36.2420

■ 233.4720, 10.6133,
-44.2639

Harmonies

Analogous

The Analogous color harmony consists of three colors that are next to each other on the color wheel.



148.6880, -3.2972, 30.9686



147.5110, -11.5909, 31.1239



145.9740, -17.2422, 23.7018

Triad

The Triadic color harmony groups three colors that are evenly spaced from another and form a triangle on the color wheel.



147.5110, -11.5909, 31.1239



139.5920, -4.7289, -23.3212



144.8360, 18.8149, -14.7652

Complementary

The Complementary color scheme is a pair of colors which are on the opposite of each other on the color wheel.



147.5110, -11.5909, 31.1239



159.4890, 11.5909, -31.1239

Split Complementary

Split-complementary colors differ from the complementary color scheme. The scheme consists of three colors, the original color and two neighbors of the complement color.



140.8400, 19.3059, -32.3087



147.5110, -11.5909, 31.1239



137.2620, 5.7868, -36.1868

Square

The Square scheme is like the rectangle color scheme, but the four colors are evenly spaced on the color wheel.



147.5110, -11.5909, 31.1239



142.1120, -13.3662, -6.2372



137.2320, 14.6756, -40.5455



147.7030, 13.9504, 5.5225

Rectangle

The Rectangle color scheme consists of four colors that form a rectangle on the color wheel.



147.5110, -11.5909, 31.1239



145.2780, -18.3781, 14.6652



137.2320, 14.6756, -40.5455



143.3190, 19.5627, -21.3278

Sweetspot

The Sweet Spot groups the original color and five complimentary colors.



147.5110, -11.5909, 31.1239



222.5240, -4.6953, 12.6955



147.2270, 12.7061, 31.3729



111.2460, -3.0793, 7.6773



247.0000, 0.0000, 0.0000



120.0000, 0.0000, 0.0000

Same Dimension

The Same Dimension uses a secret algorithm to generate beautiful new colors.



147.5110, -11.5909, 31.1239



181.3130, -17.9023, 48.8375



164.5340, -19.9833, 16.1947



86.2780, -1.6161, 5.0182



61.9060, -30.5197, 82.5204



11.3070, -5.5744, 14.6398

Inverse Universe

The Inverse Universe completely reimagines the original color for something new.



159.4890, 11.5909, -31.1239



200.1000, 18.1917, -48.3227



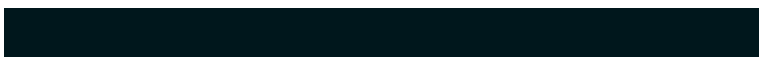
142.4660, 19.9833, -16.1947



88.1350, 1.9054, -4.5034



93.5070, 30.8090, -82.0056



16.6930, 5.5744, -14.6398

Previews

White Background



This preview shows how the YUV color 147.5110, -11.5909, 31.1239 looks on a white background.

Color Contrast Check

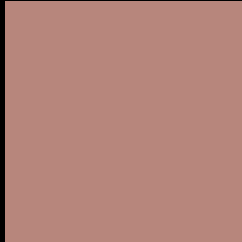
Large Text (above 18pt) WCAG AA ✓ Pass

Any Text WCAG AA × Fail

Large Text (above 18pt) WCAG AAA × Fail

Any Text WCAG AAA × Fail

Black Background



This preview shows how the YUV color 147.5110, -11.5909, 31.1239 looks on a black background.

Color Contrast Check

Large Text (above 18pt) WCAG AA ✓ Pass

Any Text WCAG AA ✓ Pass

Large Text (above 18pt) WCAG AAA ✓ Pass

Any Text WCAG AAA × Fail

If you want to check with other color combinations, try the [Color Contrast Checker](#).

YUV 147.5110, -11.5909, 31.1239

Background



This preview shows how black text looks on a background with the YUV color 147.5110, -11.5909, 31.1239.



This preview shows how white text looks on a background with the YUV color 147.5110, -11.5909,

Color Blindness Simulation

Color vision deficiency is a very complex topic, and I could not describe the different causes any better than Wikipedia does, so if you want to learn more, you should check out their [article about color blindness](#).

Dichromacy



Original Color

147.5110, -11.5909, 31.1239

Protanopia

145.3830, -7.5838, 5.8031

Deuteranopia

146.4340, -11.5530, 18.9134



Tritanopia

148.2860, -3.5920, 32.1982

Trichromacy



Original Color

147.5110, -11.5909, 31.1239

Protanomaly

146.0960, -8.9213, 14.8248

Deuteranomaly

146.7550, -11.7112, 23.0169

Tritanomaly

147.8900, -6.3548, 31.6685

Monochromacy



Original Color

147.5110, -11.5909, 31.1239

Achromatopsia

148.0000, 0.0000, 0.0000

Achromatomaly

147.9260, -4.4005, 11.4659

CSS Examples

Text

The CSS property to change the color of the text to YUV 147.5110, -11.5909, 31.1239 is called "color". The color property can be set on classes, ids or directly on the HTML element.

This example shows how text in the color `rgb(183, 134, 124)` looks like.

```
.text, #text, p{  
    color:rgb(183, 134, 124)  
}
```

If you want to add a text shadow in that color use the text-shadow property, you can generate a text shadow directly with our [CSS Text Shadow Generator](#).

Here you see how black text with a 4 pixel rgb(183, 134, 124) colored shadow looks like.

```
.shadow{ text-shadow: 4px 4px 2px rgb(183, 134, 124) }
```

Border

The CSS property to change the border of an element to YUV 147.5110, -11.5909, 31.1239 is called "border".

The border property can be set on classes, ids or directly on the HTML element.

This example shows the color as border, it can be applied via the CSS property "border" or "border-color".

```
.border, #border, table{ border:4px solid rgb(183, 134, 124) }
```


If only the border color should be changed use the property `border-color`.

```
.border{ border-color:rgb(183, 134, 124) }
```

If you want to add a box shadow in that color use:

Here you see how a box with a 4 pixel `rgb(183, 134, 124)` colored shadow looks like.

```
.boxshadow{ -moz-box-shadow:4px 4px 4px  
4px rgb(183, 134, 124); -webkit-box-  
shadow:4px 4px 4px 4px rgb(183, 134, 124);  
box-shadow:4px 4px 4px 4px rgb(183, 134,  
124) }
```

Background

The CSS property to change the background color of an element to YUV 147.5110, -11.5909, 31.1239 is called "background". The background property can be set on classes, ids or directly on the HTML element.

```
.background, #background, body{  
background: rgb(183, 134, 124) }
```

If only the background color should be changed can be used:

```
.background{ background-color: rgb(183,  
134, 124) }
```

This example shows the color as background, it is applied via the CSS property "background".

To optimize and compress your CSS code, you can use our [online CSS compressor and optimizer](#) based on csstidy. If you want to create a linear or radial gradient as background or border, check our [CSS Gradient Generator](#).

Hey! You found this booklet interesting? Support Converting Colors with the new Membership Option!

The pro membership hides all ads, plus gives you double the colors in the color bucket, and more awesome pro features!

[Learn more, Memberships starting at \\$2.50/m!](#)

**Follow me
on Twitter!**

@ConvertingColor