

Converting Colors

YUV(147.5270, -9.1338,
36.3718)

Have a look what the booklet for
YUV(147.5270, -9.1338, 36.3718)
contains.

YUV(147.5270, -9.1338, 36.3718)	3
<i>Conversions</i>	4
<i>Details</i>	6
<i>Harmonies</i>	12
<i>Previews</i>	24
<i>Color Blindness Simulation</i>	28
<i>CSS Examples</i>	31

Color

**YUV(147.5270, -9.1338,
36.3718)**

Conversions

Conversions Part 1

Format	Color
Hex	BD8281
RGB	189, 130, 129
RGB Percent	74%, 51%, 51%
CMY	0.2588, 0.4902, 0.4941
CMYK	0.00, 0.31, 0.32, 0.26
HSL	1°, 31%, 62%
HSV	1°, 32%, 74%
XYZ	32.9313, 28.3691, 24.5090
YIQ	147.5270, 35.4850, 12.1970

Conversions

Conversions Part 2

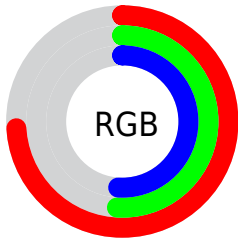
Format	Color
R _Y B	189, 130, 129
Decimal	12419713
CIE Lab	60.22, 22.64, 9.75
CIE LCh	60, 24.652, 23.307
Yxy	28.3691, 0.3838, 0.3306
Android (android.graphics.Color)	4290609793 (0xFFBD8281)
YUV	147.5270, -9.1338, 36.3718
Hunter-Lab	53.2626, 17.1539, 10.0013

Details

The YUV color **147.5270, -9.1338, 36.3718** is a light color, and the websafe version is hex **CC9999**. A complement of this color would be **170.4730, 9.1338, -36.3718**, and the grayscale version is **148.0000, 0.0000, 0.0000**.

A 20% lighter version of the original color is **202.0220, -9.8708, 39.4457**, and **96.1460, -7.9600, 33.1980** is the 20% darker color. If you saturate the color by 10%, you get **134.2080, -11.9345, 48.0526**, and if you desaturate by 10%, it is **160.8460, -6.3331, 24.6911**.

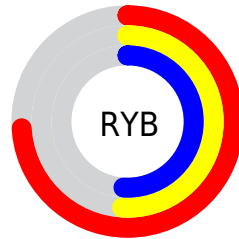
Distribution



Red (74%)

Green (51%)

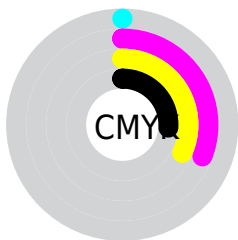
Blue (51%)



Red (74%)

Yellow (51%)

Blue (51%)

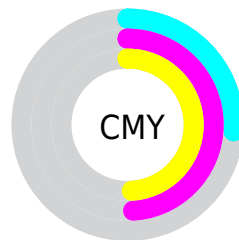


Cyan (0%)

Magenta (31%)

Yellow (32%)

Black (26%)



Cyan (26%)

Magenta (49%)

Yellow (49%)

Brightness & Saturation Gradients

These gradients show how the YUV color 147.5270, -9.1338, 36.3718 changes by changing the brightness by 10 percent. The first figure shows a shift by +10% for each color and the second figure -10%.

Similar to the brightness gradients but the following saturation gradients show a change of the YUV color 147.5270, -9.1338, 36.3718 by changing the saturation by 10% instead.

■ 147.5270, -9.1338,
36.3718

■ 147.5270, -9.1338,
36.3718

■ 255.0000, 0.0000,
0.0000

■ 121.6300, -8.6916,
34.5275

■ 202.0220, -9.8708,
39.4457

■ 96.1460, -7.9600,
33.1980

■ 223.9280, -7.3595,
27.2501

■ 71.6620, -7.2284,
31.8684

■ 244.2570, -3.0847,
9.4216

■ 48.5800, -6.2019,
29.3093

■ 25.0960, -5.4703,
27.9798

■ 11.1770, -5.0173,
22.6468

■ 0.0000, 0.0000,

0.0000

■ 147.5270, -9.1338,
36.3718

■ 147.5270, -9.1338,
36.3718

■ 134.2080,
-11.9345, 48.0526

■ 160.8460, -6.3331,
24.6911

■ 121.4760,
-15.0247, 59.2185

■ 173.5780, -3.2430,
13.5251

■ 108.1570,
-17.8254, 70.8993

■ 186.8970, -0.4422,
1.8443

■ 95.4250, -20.9155,
82.0653

■ 199.6290, 2.6479,
-9.3216

■ 82.2200, -23.2795,
93.6461

■ 212.9480, 5.4486,
-21.0024

■ 68.9010, -26.0802,
105.3268

■ 226.1530, 7.8126,
-32.5832

■ 58.2720, -28.7281,
114.6485

■ 235.2660, 9.7289,
-40.5753

Harmonies

Analogous

The Analogous color harmony consists of three colors that are next to each other on the color wheel.



148.8390, 1.0654, 31.7132



147.5270, -9.1338, 36.3718



146.3170, -17.4113, 31.2940

Triad

The Triadic color harmony groups three colors that are evenly spaced from another and form a triangle on the color wheel.



147.5270, -9.1338, 36.3718



139.2460, -9.9813, -18.6327



142.0840, 22.6366, -27.2607

Complementary

The Complementary color scheme is a pair of colors which are on the opposite of each other on the color wheel.



147.5270, -9.1338, 36.3718



170.4730, 9.1338, -36.3718

Split Complementary

Split-complementary colors differ from the complementary color scheme. The scheme consists of three colors, the original color and two neighbors of the complement color.



136.2190, 21.0910, -44.9191



147.5270, -9.1338, 36.3718



136.1110, 1.4243, -36.9313

Square

The Square scheme is like the rectangle color scheme, but the four colors are evenly spaced on the color wheel.



147.5270, -9.1338, 36.3718



142.1900, -18.3347, 0.7104



134.2480, 13.6817, -48.4525



146.3150, 19.0717, -3.7843

Rectangle

The Rectangle color scheme consists of four colors that form a rectangle on the color wheel.



147.5270, -9.1338, 36.3718



145.4640, -20.4418, 23.2721



134.2480, 13.6817, -48.4525



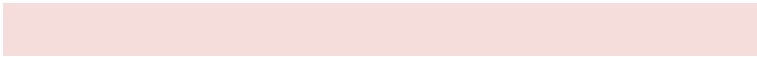
140.0400, 22.6583, -34.2381

Sweetspot

The Sweet Spot groups the original color and five complimentary colors.



147.5270, -9.1338, 36.3718



228.0620, -3.9746, 14.8546



153.6660, 16.9267, 30.9879



112.1860, -2.0637, 8.6069



250.0000, 0.0000, 0.0000



122.0000, 0.0000, 0.0000

Same Dimension

The Same Dimension uses a secret algorithm to generate beautiful new colors.



147.5270, -9.1338, 36.3718



180.3940, -13.9982, 56.6595



164.5500, -17.5261, 21.4427



87.6910, -1.3267, 5.5330



49.0030, -24.1585, 95.5904



9.8560, -4.8590, 18.5433

Inverse Universe

The Inverse Universe completely reimagines the original color for something new.



170.4730, 9.1338, -36.3718



216.0190, 14.2876, -56.1447



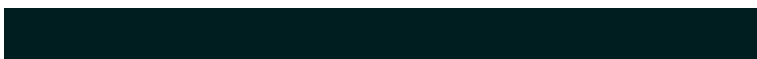
152.8630, 17.8155, -20.9279



91.3090, 1.3267, -5.5330



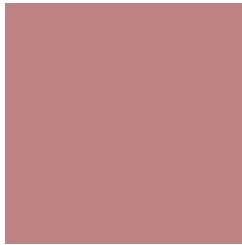
108.9970, 24.1585, -95.5904



21.1440, 4.8590, -18.5433

Previews

White Background



This preview shows how the YUV color 147.5270, -9.1338, 36.3718 looks on a white background.

Color Contrast Check

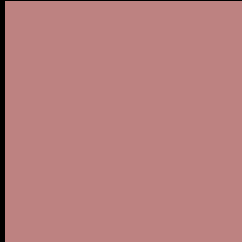
Large Text (above 18pt) WCAG AA ✓ Pass

Any Text WCAG AA × Fail

Large Text (above 18pt) WCAG AAA × Fail

Any Text WCAG AAA × Fail

Black Background



This preview shows how the YUV color 147.5270, -9.1338, 36.3718 looks on a black background.

Color Contrast Check

Large Text (above 18pt) WCAG AA ✓ Pass

Any Text WCAG AA ✓ Pass

Large Text (above 18pt) WCAG AAA ✓ Pass

Any Text WCAG AAA × Fail

If you want to check with other color combinations, try the [Color Contrast Checker](#).

YUV 147.5270, -9.1338, 36.3718

Background



This preview shows how black text looks on a background with the YUV color 147.5270, -9.1338, 36.3718.



This preview shows how white text looks on a background with the YUV color 147.5270, -9.1338,

Color Blindness Simulation

Color vision deficiency is a very complex topic, and I could not describe the different causes any better than Wikipedia does, so if you want to learn more, you should check out their [article about color blindness](#).

Dichromacy



Original Color

147.5270, -9.1338, 36.3718

Protanopia

145.5830, -4.2314, 3.8737

Deuteranopia

146.2920, -9.5110, 17.2839



Tritanopia

148.2650, -5.0606, 36.6016

Trichromacy



Original Color

147.5270, -9.1338, 36.3718

Protanomaly

146.4920, -6.1586, 15.3545

Deuteranomaly

146.4500, -9.0959, 24.1613

Tritanomaly

147.9230, -6.3710, 36.9015

Monochromacy



Original Color

147.5270, -9.1338, 36.3718

Achromatopsia

148.0000, 0.0000, 0.0000

Achromatomaly

147.5780, -3.2430, 13.5251

CSS Examples

Text

The CSS property to change the color of the text to YUV 147.5270, -9.1338, 36.3718 is called "color". The color property can be set on classes, ids or directly on the HTML element.

This example shows how text in the color `rgb(189, 130, 129)` looks like.

```
.text, #text, p{  
    color:rgb(189, 130, 129)  
}
```

If you want to add a text shadow in that color use the text-shadow property, you can generate a text shadow directly with our [CSS Text Shadow Generator](#).

Here you see how black text with a 4 pixel rgb(189, 130, 129) colored shadow looks like.

```
.shadow{ text-shadow: 4px 4px 2px rgb(189, 130, 129) }
```

Border

The CSS property to change the border of an element to YUV 147.5270, -9.1338, 36.3718 is called "border". The border property can be set on classes, ids or directly on the HTML element.

This example shows the color as border, it can be applied via the CSS property "border" or "border-color".

```
.border, #border, table{ border:4px solid rgb(189, 130, 129) }
```


If only the border color should be changed use the property `border-color`.

```
.border{ border-color:rgb(189, 130, 129) }
```

If you want to add a box shadow in that color use:

Here you see how a box with a 4 pixel `rgb(189, 130, 129)` colored shadow looks like.

```
.boxshadow{ -moz-box-shadow:4px 4px 4px  
4px rgb(189, 130, 129); -webkit-box-  
shadow:4px 4px 4px 4px rgb(189, 130, 129);  
box-shadow:4px 4px 4px 4px rgb(189, 130,  
129) }
```

Background

The CSS property to change the background color of an element to YUV 147.5270, -9.1338, 36.3718 is called "background". The background property can be set on classes, ids or directly on the HTML element.

```
.background, #background, body{  
background: rgb(189, 130, 129) }
```

If only the background color should be changed can be used:

```
.background{ background-color: rgb(189,  
130, 129) }
```

This example shows the color as background, it is applied via the CSS property "background".

To optimize and compress your CSS code, you can use our [online CSS compressor and optimizer](#) based on csstidy. If you want to create a linear or radial gradient as background or border, check our [CSS Gradient Generator](#).

Hey! You found this booklet interesting? Support Converting Colors with the new Membership Option!

The pro membership hides all ads, plus gives you double the colors in the color bucket, and more awesome pro features!

[Learn more, Memberships starting at \\$2.50/m!](#)

**Follow me
on Twitter!**

@ConvertingColor