

Converting Colors

YUV(147.7780, -13.2016,
34.3977)

Have a look what the booklet for
YUV(147.7780, -13.2016, 34.3977)
contains.

YUV(147.7780, -13.2016, 34.3977)	3
<i>Conversions</i>	4
<i>Details</i>	6
<i>Harmonies</i>	12
<i>Previews</i>	24
<i>Color Blindness Simulation</i>	28
<i>CSS Examples</i>	31

Color

**YUV(147.7780, -13.2016,
34.3977)**

Conversions

Conversions Part 1

Format	Color
Hex	BB8579
RGB	187, 133, 121
RGB Percent	73%, 52%, 47%
CMY	0.2667, 0.4784, 0.5255
CMYK	0.00, 0.29, 0.35, 0.27
HSL	11°, 33%, 60%
HSV	11°, 35%, 73%
XYZ	32.3322, 28.7203, 21.9286
YIQ	147.7780, 36.0360, 7.7160

Conversions

Conversions Part 2

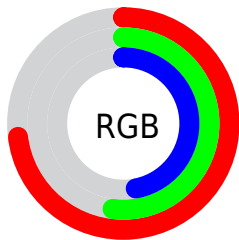
Format	Color
RYB	187, 136, 121
Decimal	12289401
CIELab	60.53, 19.15, 14.72
CIELCh	61, 24.153, 37.558
Yxy	28.7203, 0.3896, 0.3461
Android (android.graphics.Color)	4290479481 (0xFFBB8579)
YUV	147.7780, -13.2016, 34.3977
Hunter-Lab	53.5914, 13.9061, 13.2535

Details

The YUV color **147.7780, -13.2016, 34.3977** is a dark color, and the websafe version is hex **CC9999**. A complement of this color would be **160.2220, 13.2016, -34.3977**, and the grayscale version is **148.0000, 0.0000, 0.0000**.

A 20% lighter version of the original color is **201.8600, -14.2280, 36.9568**, and **96.3970, -12.0277, 31.2238** is the 20% darker color. If you saturate the color by 10%, you get **136.8070, -17.1599, 44.0193**, and if you desaturate by 10%, it is **158.7490, -9.2433, 24.7761**.

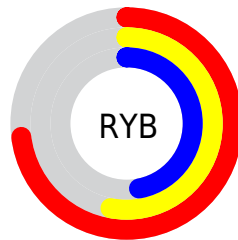
Distribution



Red (73%)

Green (52%)

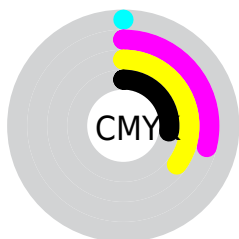
Blue (47%)



Red (73%)

Yellow (53%)

Blue (47%)

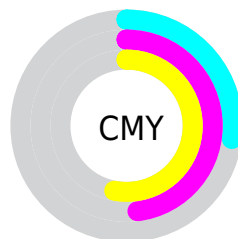


Cyan (0%)

Magenta (29%)

Yellow (35%)

Black (27%)



Cyan (27%)

Magenta (48%)

Yellow (53%)

Brightness & Saturation Gradients

These gradients show how the YUV color 147.7780, -13.2016, 34.3977 changes by changing the brightness by 10 percent. The first figure shows a shift by +10% for each color and the second figure -10%.

Similar to the brightness gradients but the following saturation gradients show a change of the YUV color 147.7780, -13.2016, 34.3977 by changing the saturation by 10% instead.

■ 147.7780,
-13.2016, 34.3977

■ 147.7780,
-13.2016, 34.3977

■ 255.0000, 0.0000,
0.0000

■ 121.8810,
-12.7593, 32.5534

■ 201.8600,
-14.2280, 36.9568

■ 96.3970, -12.0277,
31.2238

■ 224.7770,
-11.7221, 26.5056

■ 72.6140, -11.1487,
29.2795

■ 244.9920, -7.8841,
8.7770

■ 48.9450, -9.8329,
27.2352

■ 26.5920, -11.1379,
25.7908

■ 10.2800, -4.5750,
20.8024

■ 0.0000, 0.0000,

0.0000

■ 147.7780,
-13.2016, 34.3977

■ 147.7780,
-13.2016, 34.3977

■ 136.8070,
-17.1599, 44.0193

■ 158.7490, -9.2433,
24.7761

■ 125.3630,
-20.3920, 54.0556

■ 170.1930, -6.0111,
14.7397

■ 114.3920,
-24.3503, 63.6772

■ 181.1640, -2.0529,
5.1182

■ 103.4210,
-28.3086, 73.2988

■ 192.1350, 1.9054,
-4.5034

■ 92.5640, -31.8301,
82.8204

■ 203.5790, 5.1376,
-14.5398

■ 81.0060, -35.4990,
92.9567

■ 214.5500, 9.0958,
-24.1614

■ 75.8710, -37.4044,
97.4601

■ 225.5210, 13.0541,
-33.7829

■ 234.6680, 10.0237,
-41.8048

Harmonies

Analogous

The Analogous color harmony consists of three colors that are next to each other on the color wheel.



148.5960, -3.7448, 34.5573



147.7780, -13.2016, 34.3977



146.1160, -19.2842, 25.3313

Triad

The Triadic color harmony groups three colors that are evenly spaced from another and form a triangle on the color wheel.



147.7780, -13.2016, 34.3977



139.1570, -5.0074, -27.3247



145.1070, 21.1462, -15.8798

Complementary

The Complementary color scheme is a pair of colors which are on the opposite of each other on the color wheel.



147.7780, -13.2016, 34.3977



160.2220, 13.2016, -34.3977

Split Complementary

Split-complementary colors differ from the complementary color scheme. The scheme consists of three colors, the original color and two neighbors of the complement color.



140.2030, 22.0849, -37.0120



147.7780, -13.2016, 34.3977



136.2720, 7.2609, -42.3345

Square

The Square scheme is like the rectangle color scheme, but the four colors are evenly spaced on the color wheel.



147.7780, -13.2016, 34.3977



141.4600, -14.5238, -8.2964



136.1710, 17.1707, -47.5080



148.7570, 15.4028, 6.3521

Rectangle

The Rectangle color scheme consists of four colors that form a rectangle on the color wheel.



147.7780, -13.2016, 34.3977



145.1210, -20.2727, 15.6799



136.1710, 17.1707, -47.5080



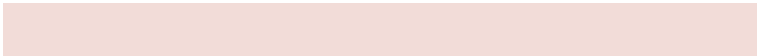
143.2910, 22.0415, -23.0572

Sweetspot

The Sweet Spot groups the original color and five complimentary colors.



147.7780, -13.2016, 34.3977



226.1220, -4.9901, 13.9250



147.0040, 14.2950, 35.0765



112.5450, -3.2267, 8.2920



250.0000, 0.0000, 0.0000



122.0000, 0.0000, 0.0000

Same Dimension

The Same Dimension uses a secret algorithm to generate beautiful new colors.



147.7780, -13.2016, 34.3977



181.7650, -20.0971, 52.8261



166.5620, -22.4621, 17.9241



88.8650, -1.9054, 4.5034



64.2650, -31.6826, 82.2056



12.7910, -6.3060, 15.9693

Inverse Universe

The Inverse Universe completely reimagines the original color for something new.



160.2220, 13.2016, -34.3977



201.2350, 20.0971, -52.8261



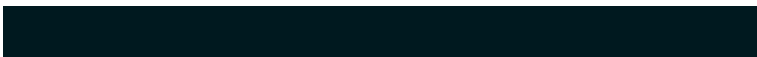
141.4380, 22.4621, -17.9241



90.7220, 1.6161, -5.0182



93.7350, 31.6826, -82.2056



18.2090, 6.3060, -15.9693

Previews

White Background



This preview shows how the YUV color 147.7780, -13.2016, 34.3977 looks on a white background.

Color Contrast Check

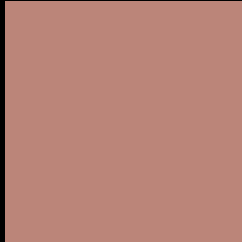
Large Text (above 18pt) WCAG AA ✓ Pass

Any Text WCAG AA × Fail

Large Text (above 18pt) WCAG AAA × Fail

Any Text WCAG AAA × Fail

Black Background



This preview shows how the YUV color 147.7780, -13.2016, 34.3977 looks on a black background.

Color Contrast Check

Large Text (above 18pt) WCAG AA ✓ Pass

Any Text WCAG AA ✓ Pass

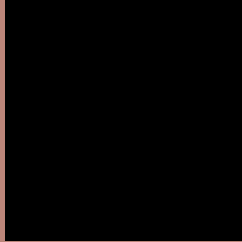
Large Text (above 18pt) WCAG AAA ✓ Pass

Any Text WCAG AAA × Fail

If you want to check with other color combinations, try the [Color Contrast Checker](#).

YUV 147.7780, -13.2016, 34.3977

Background



This preview shows how black text looks on a background with the YUV color 147.7780, -13.2016, 34.3977.



This preview shows how white text looks on a background with the YUV color 147.7780, -13.2016,

Color Blindness Simulation

Color vision deficiency is a very complex topic, and I could not describe the different causes any better than Wikipedia does, so if you want to learn more, you should check out their [article about color blindness](#).

Dichromacy



Original Color

147.7780, -13.2016, 34.3977

Protanopia

145.9270, -9.3310, 6.2030

Deuteranopia

147.2770, -13.4476, 19.9281



Tritanopia

148.7810, -4.3290, 35.2721

Trichromacy



Original Color

147.7780, -13.2016, 34.3977

Protanomaly

146.3520, -10.5265, 16.3543

Deuteranomaly

147.3100, -13.4638, 25.1611

Tritanomaly

148.2710, -7.5286, 34.8423

Monochromacy



Original Color

147.7780, -13.2016, 34.3977

Achromatopsia

148.0000, 0.0000, 0.0000

Achromatomaly

148.1110, -4.9847, 12.1807

CSS Examples

Text

The CSS property to change the color of the text to YUV 147.7780, -13.2016, 34.3977 is called "color". The color property can be set on classes, ids or directly on the HTML element.

This example shows how text in the color `rgb(187, 133, 121)` looks like.

```
.text, #text, p{  
    color:rgb(187, 133, 121)  
}
```

If you want to add a text shadow in that color use the text-shadow property, you can generate a text shadow directly with our [CSS Text Shadow Generator](#).

Here you see how black text with a 4 pixel rgb(187, 133, 121) colored shadow looks like.

```
.shadow{ text-shadow: 4px 4px 2px rgb(187, 133, 121) }
```

Border

The CSS property to change the border of an element to YUV 147.7780, -13.2016, 34.3977 is called "border".

The border property can be set on classes, ids or directly on the HTML element.

This example shows the color as border, it can be applied via the CSS property "border" or "border-color".

```
.border, #border, table{ border:4px solid rgb(187, 133, 121) }
```


If only the border color should be changed use the property `border-color`.

```
.border{ border-color:rgb(187, 133, 121) }
```

If you want to add a box shadow in that color use:

Here you see how a box with a 4 pixel `rgb(187, 133, 121)` colored shadow looks like.

```
.boxshadow{ -moz-box-shadow:4px 4px 4px  
4px rgb(187, 133, 121); -webkit-box-  
shadow:4px 4px 4px 4px rgb(187, 133, 121);  
box-shadow:4px 4px 4px 4px rgb(187, 133,  
121) }
```

Background

The CSS property to change the background color of an element to YUV 147.7780, -13.2016, 34.3977 is called "background". The background property can be set on classes, ids or directly on the HTML element.

```
.background, #background, body{  
background: rgb(187, 133, 121) }
```

If only the background color should be changed can be used:

```
.background{ background-color: rgb(187,  
133, 121) }
```

This example shows the color as background, it is applied via the CSS property "background".

To optimize and compress your CSS code, you can use our [online CSS compressor and optimizer](#) based on csstidy. If you want to create a linear or radial gradient as background or border, check our [CSS Gradient Generator](#).

Hey! You found this booklet interesting? Support Converting Colors with the new Membership Option!

The pro membership hides all ads, plus gives you double the colors in the color bucket, and more awesome pro features!

[Learn more, Memberships starting at \\$2.50/m!](#)

**Follow me
on Twitter!**

@ConvertingColor