

Converting Colors

YUV(147.9220, -4.8915,
29.0094)

Have a look what the booklet for
YUV(147.9220, -4.8915, 29.0094)
contains.

YUV(147.9220, -4.8915, 29.0094)	3
<i>Conversions</i>	4
<i>Details</i>	6
<i>Harmonies</i>	12
<i>Previews</i>	24
<i>Color Blindness Simulation</i>	28
<i>CSS Examples</i>	31

Color

**YUV(147.9220, -4.8915,
29.0094)**

Conversions

Conversions Part 1

Format	Color
Hex	B5858A
RGB	181, 133, 138
RGB Percent	71%, 52%, 54%
CMY	0.2902, 0.4784, 0.4588
CMYK	0.00, 0.27, 0.24, 0.29
HSL	354°, 24%, 62%
HSV	354°, 27%, 71%
XYZ	32.0310, 28.4338, 27.8448
YIQ	147.9220, 27.0030, 11.7310

Conversions

Conversions Part 2

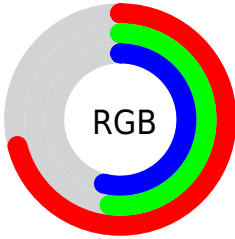
Format	Color
RYB	181, 133, 138
Decimal	11896202
CIELab	60.28, 19.16, 4.57
CIElCh	60, 19.697, 13.407
Yxy	28.4338, 0.3627, 0.3220
Android (android.graphics.Color)	4290086282 (0xFFB5858A)
YUV	147.9220, -4.8915, 29.0094
Hunter-Lab	53.3233, 13.9081, 6.3658

Details

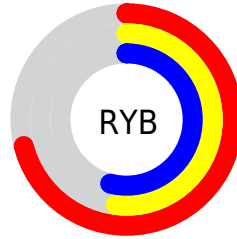
The YUV color $147.9220, -4.8915, 29.0094$ is a light color, and the websafe version is hex $CC9999$. A complement of this color would be $166.0780, 4.8915, -29.0094$, and the grayscale version is $148.0000, 0.0000, 0.0000$.

A 20% lighter version of the original color is $202.1180, -5.4812, 31.4685$, and $96.7260, -4.3019, 26.5503$ is the 20% darker color. If you saturate the color by 10%, you get $135.5320, -6.6713, 39.8754$, and if you desaturate by 10%, it is $160.3120, -3.1118, 18.1434$.

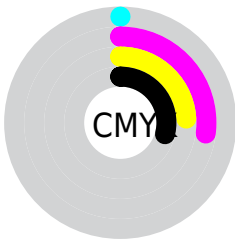
Distribution



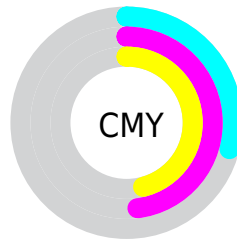
- Red (71%)
- Green (52%)
- Blue (54%)



- Red (71%)
- Yellow (52%)
- Blue (54%)



- Cyan (0%)
- Magenta (27%)
- Yellow (24%)
- Black (29%)



- Cyan (29%)
- Magenta (48%)
- Yellow (46%)

Brightness & Saturation Gradients

These gradients show how the YUV color 147.9220, -4.8915, 29.0094 changes by changing the brightness by 10 percent. The first figure shows a shift by +10% for each color and the second figure -10%.

Similar to the brightness gradients but the following saturation gradients show a change of the YUV color 147.9220, -4.8915, 29.0094 by changing the saturation by 10% instead.

■ 147.9220, -4.8915,
29.0094

■ 147.9220, -4.8915,
29.0094

■ 255.0000, 0.0000,
0.0000

■ 122.3240, -4.5967,
27.7799

■ 202.1180, -5.4812,
31.4685

■ 96.7260, -4.3019,
26.5503

■ 226.8290, -3.8597,
24.7060

■ 72.8290, -3.8597,
24.7060

■ 247.1580, 0.4151,
6.8774

■ 49.3450, -3.1281,
23.3764

■ 27.5620, -2.2491,
21.4321

■ 10.2800, -4.5750,
20.8024

■ 0.0000, 0.0000,

0.0000

■ 147.9220, -4.8915,
29.0094

■ 147.9220, -4.8915,
29.0094

■ 135.5320, -6.6713,
39.8754

■ 160.3120, -3.1118,
18.1434

■ 123.1420, -8.4510,
50.7415

■ 172.7020, -1.3321,
7.2773

■ 110.6380,
-10.6675, 61.7075

■ 185.2060, 0.8844,
-3.6887

■ 98.2480, -12.4473,
72.5735

■ 197.5960, 2.6642,
-14.5547

■ 85.8580, -14.2270,
83.4395

■ 210.5730, 4.1545,
-25.9355

■ 72.8810, -15.7173,
94.8204

■ 222.9630, 5.9342,
-36.8016

■ 60.3770, -17.9339,
105.7864

■ 232.5320, 9.5977,
-45.1936

■ 56.2850, -18.3815,
109.3751

■ 232.8740, 10.9081,
-45.4935

Harmonies

Analogous

The Analogous color harmony consists of three colors that are next to each other on the color wheel.



148.4680, 3.7133, 22.3916



147.9220, -4.8915, 29.0094



146.9620, -12.3063, 27.2203

Triad

The Triadic color harmony groups three colors that are evenly spaced from another and form a triangle on the color wheel.



147.9220, -4.8915, 29.0094



141.4860, -10.5926, -9.1962



142.1290, 17.6844, -25.5461

Complementary

The Complementary color scheme is a pair of colors which are on the opposite of each other on the color wheel.



147.9220, -4.8915, 29.0094



166.0780, 4.8915, -29.0094

Split Complementary

Split-complementary colors differ from the complementary color scheme. The scheme consists of three colors, the original color and two neighbors of the complement color.



138.9660, 14.8068, -35.9272



147.9220, -4.8915, 29.0094



139.2760, -2.1081, -23.9211

Square

The Square scheme is like the rectangle color scheme, but the four colors are evenly spaced on the color wheel.



147.9220, -4.8915, 29.0094



143.7930, -16.1669, 5.4435



137.7290, 7.5286, -34.8423



145.2990, 16.6146, -9.0322

Rectangle

The Rectangle color scheme consists of four colors that form a rectangle on the color wheel.



147.9220, -4.8915, 29.0094



146.1310, -15.3476, 22.6871



137.7290, 7.5286, -34.8423



140.3950, 17.5533, -30.1644

Sweetspot

The Sweet Spot groups the original color and five complimentary colors.



147.9220, -4.8915, 29.0094



221.9090, -1.9271, 11.4808



151.0300, 14.7752, 21.0217



109.4030, -1.1847, 6.6626



245.0000, 0.0000, 0.0000



117.0000, 0.0000, 0.0000

Same Dimension

The Same Dimension uses a secret algorithm to generate beautiful new colors.



147.9220, -4.8915, 29.0094



183.2230, -7.9979, 45.4084



157.9180, -12.2846, 20.2429



82.8050, -0.8899, 5.4330



47.5710, -15.5645, 92.4612



8.1160, -2.5222, 15.6843

Inverse Universe

The Inverse Universe completely reimagines the original color for something new.



147.9220, -4.8915, 29.0094



183.2230, -7.9979, 45.4084



156.0820, 12.2846, -20.2429



82.8050, -0.8899, 5.4330



47.5710, -15.5645, 92.4612



8.1160, -2.5222, 15.6843

Previews

White Background



This preview shows how the YUV color 147.9220, -4.8915, 29.0094 looks on a white background.

Color Contrast Check

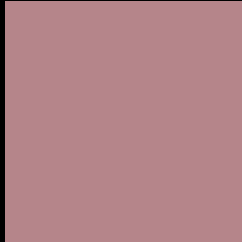
Large Text (above 18pt) WCAG AA ✓ Pass

Any Text WCAG AA ✗ Fail

Large Text (above 18pt) WCAG AAA ✗ Fail

Any Text WCAG AAA ✗ Fail

Black Background



This preview shows how the YUV color 147.9220, -4.8915, 29.0094 looks on a black background.

Color Contrast Check

Large Text (above 18pt) WCAG AA ✓ Pass

Any Text WCAG AA ✓ Pass

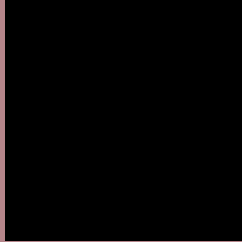
Large Text (above 18pt) WCAG AAA ✓ Pass

Any Text WCAG AAA × Fail

If you want to check with other color combinations, try the [Color Contrast Checker](#).

YUV 147.9220, -4.8915, 29.0094

Background



This preview shows how black text looks on a background with the YUV color 147.9220, -4.8915, 29.0094.



This preview shows how white text looks on a background with the YUV color 147.9220, -4.8915,

Color Blindness Simulation

Color vision deficiency is a very complex topic, and I could not describe the different causes any better than Wikipedia does, so if you want to learn more, you should check out their [article about color blindness](#).

Dichromacy



Original Color

147.9220, -4.8915, 29.0094

Protanopia

145.8970, -0.4422, 1.8443

Deuteranopia

147.1220, -4.9901, 13.9250



Tritanopia

147.7910, -2.8550, 29.1243

Trichromacy



Original Color

147.9220, -4.8915, 29.0094

Protanomaly

146.7950, -2.3639, 11.5808

Deuteranomaly

147.4540, -5.1538, 19.7728

Tritanomaly

147.6770, -3.2918, 29.2243

Monochromacy



Original Color

147.9220, -4.8915, 29.0094

Achromatopsia

148.0000, 0.0000, 0.0000

Achromatomaly

148.1970, -2.0691, 10.3512

CSS Examples

Text

The CSS property to change the color of the text to YUV 147.9220, -4.8915, 29.0094 is called "color". The color property can be set on classes, ids or directly on the HTML element.

This example shows how text in the color `rgb(181, 133, 138)` looks like.

```
.text, #text, p{  
    color:rgb(181, 133, 138)  
}
```

If you want to add a text shadow in that color use the text-shadow property, you can generate a text shadow directly with our [CSS Text Shadow Generator](#).

Here you see how black text with a 4 pixel rgb(181, 133, 138) colored shadow looks like.

```
.shadow{ text-shadow: 4px 4px 2px rgb(181, 133, 138) }
```

Border

The CSS property to change the border of an element to YUV 147.9220, -4.8915, 29.0094 is called "border". The border property can be set on classes, ids or directly on the HTML element.

This example shows the color as border, it can be applied via the CSS property "border" or "border-color".

```
.border, #border, table{ border:4px solid rgb(181, 133, 138) }
```


If only the border color should be changed use the property `border-color`.

```
.border{ border-color:rgb(181, 133, 138) }
```

If you want to add a box shadow in that color use:

Here you see how a box with a 4 pixel `rgb(181, 133, 138)` colored shadow looks like.

```
.boxshadow{ -moz-box-shadow:4px 4px 4px  
4px rgb(181, 133, 138); -webkit-box-  
shadow:4px 4px 4px 4px rgb(181, 133, 138);  
box-shadow:4px 4px 4px 4px rgb(181, 133,  
138) }
```

Background

The CSS property to change the background color of an element to YUV 147.9220, -4.8915, 29.0094 is called "background". The background property can be set on classes, ids or directly on the HTML element.

```
.background, #background, body{  
background: rgb(181, 133, 138) }
```

If only the background color should be changed can be used:

```
.background{ background-color: rgb(181,  
133, 138) }
```

This example shows the color as background, it is applied via the CSS property "background".

To optimize and compress your CSS code, you can use our [online CSS compressor and optimizer](#) based on csstidy. If you want to create a linear or radial gradient as background or border, check our [CSS Gradient Generator](#).

Hey! You found this booklet interesting? Support Converting Colors with the new Membership Option!

The pro membership hides all ads, plus gives you double the colors in the color bucket, and more awesome pro features!

[Learn more, Memberships starting at \\$2.50/m!](#)

**Follow me
on Twitter!**

@ConvertingColor