

Converting Colors

YUV(147.9690, -16.2537,
33.3532)

Have a look what the booklet for
YUV(147.9690, -16.2537, 33.3532)
contains.

YUV(147.9690, -16.2537, 33.3532)	3
<i>Conversions</i>	4
<i>Details</i>	6
<i>Harmonies</i>	12
<i>Previews</i>	24
<i>Color Blindness Simulation</i>	28
<i>CSS Examples</i>	31

Color

**YUV(147.9690, -16.2537,
33.3532)**

Conversions

Conversions Part 1

Format	Color
Hex	BA8773
RGB	186, 135, 115
RGB Percent	73%, 53%, 45%
CMY	0.2706, 0.4706, 0.5490
CMYK	0.00, 0.27, 0.38, 0.27
HSL	17°, 34%, 59%
HSV	17°, 38%, 73%
XYZ	32.0082, 29.0049, 20.1311
YIQ	147.9690, 36.8160, 4.5920

Conversions

Conversions Part 2

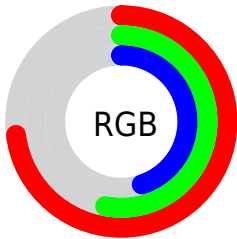
Format	Color
R _Y B	186, 143, 115
Decimal	12224371
CIE Lab	60.79, 16.89, 18.45
CIE LCh	61, 25.016, 47.529
Yxy	29.0049, 0.3945, 0.3574
Android (android.graphics.Color)	4290414451 (0xFFBA8773)
YUV	147.9690, -16.2537, 33.3532
Hunter-Lab	53.8562, 11.8392, 15.5370

Details

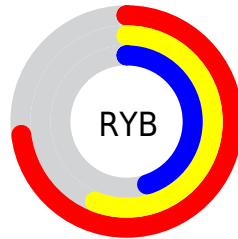
The YUV color **147.9690, -16.2537, 33.3532** is a dark color, and the websafe version is hex **CC9999**. A complement of this color would be **153.0310, 16.2537, -33.3532**, and the grayscale version is **148.0000, 0.0000, 0.0000**.

A 20% lighter version of the original color is **202.3500, -17.4276, 36.5270**, and **96.7020, -14.6431, 30.0793** is the 20% darker color. If you saturate the color by 10%, you get **138.1720, -20.7908, 41.9452**, and if you desaturate by 10%, it is **157.7660, -11.7166, 24.7612**.

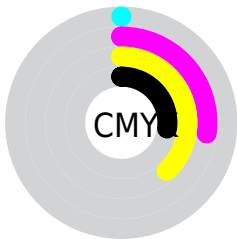
Distribution



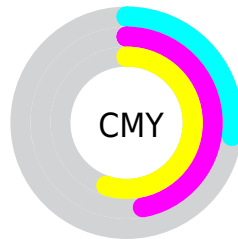
- Red (73%)
- Green (53%)
- Blue (45%)



- Red (73%)
- Yellow (56%)
- Blue (45%)



- Cyan (0%)
- Magenta (27%)
- Yellow (38%)
- Black (27%)



- Cyan (27%)
- Magenta (47%)
- Yellow (55%)

Brightness & Saturation Gradients

These gradients show how the YUV color 147.9690, -16.2537, 33.3532 changes by changing the brightness by 10 percent. The first figure shows a shift by +10% for each color and the second figure -10%.

Similar to the brightness gradients but the following saturation gradients show a change of the YUV color 147.9690, -16.2537, 33.3532 by changing the saturation by 10% instead.

■ 147.9690,
-16.2537, 33.3532

■ 147.9690,
-16.2537, 33.3532

■ 255.0000, 0.0000,
0.0000

■ 122.0720,
-15.8115, 31.5089

■ 202.3500,
-17.4276, 36.5270

■ 96.7020, -14.6431,
30.0793

■ 225.1530,
-15.3584, 26.1758

■ 72.8050, -14.2009,
28.2350

■ 245.3680,
-11.5204, 8.4473

■ 49.2500, -12.4482,
26.0908

■ 254.5440, -1.7472,
0.3999

■ 27.0110, -13.3164,
24.5464

■ 9.5680, -4.7170,
19.6729

■ 0.0000, 0.0000,

0.0000

■ 147.9690,
-16.2537, 33.3532

■ 147.9690,
-16.2537, 33.3532

■ 138.1720,
-20.7908, 41.9452

■ 157.7660,
-11.7166, 24.7612

■ 127.9020,
-24.6017, 50.9519

■ 168.0360, -7.9057,
15.7544

■ 118.1050,
-29.1388, 59.5439

■ 177.8330, -3.3687,
7.1625

■ 108.4220,
-33.2390, 68.0359

■ 187.5160, 0.7316,
-1.3295

■ 98.0380, -37.4867,
77.1427

■ 197.9000, 4.9793,
-10.4363

■ 88.2410, -42.0238,
85.7346

■ 207.6970, 9.5164,
-19.0283

■ 86.1380, -42.4660,
87.5790

■ 217.9670, 13.3273,
-28.0351

■ 226.7380, 13.9332,
-35.7272

■ 234.3690, 10.1711,
-42.4196

Harmonies

Analogous

The Analogous color harmony consists of three colors that are next to each other on the color wheel.



149.2820, -7.5340, 36.5867



147.9690, -16.2537, 33.3532



146.3390, -20.8731, 21.6277

Triad

The Triadic color harmony groups three colors that are evenly spaced from another and form a triangle on the color wheel.



147.9690, -16.2537, 33.3532



137.8510, -0.9125, -34.0723



147.0370, 20.6878, -8.8024

Complementary

The Complementary color scheme is a pair of colors which are on the opposite of each other on the color wheel.



147.9690, -16.2537, 33.3532



153.0310, 16.2537, -33.3532

Split Complementary

Split-complementary colors differ from the complementary color scheme. The scheme consists of three colors, the original color and two neighbors of the complement color.



141.8770, 23.2316, -31.4641



147.9690, -16.2537, 33.3532



135.6780, 11.4977, -47.9526

Square

The Square scheme is like the rectangle color scheme, but the four colors are evenly spaced on the color wheel.



147.9690, -16.2537, 33.3532



141.2850, -12.4655, -15.1589



136.9690, 20.2283, -48.2078



150.2310, 13.1971, 13.8294

Rectangle

The Rectangle color scheme consists of four colors that form a rectangle on the color wheel.



147.9690, -16.2537, 33.3532



144.9740, -20.6932, 10.5468



136.9690, 20.2283, -48.2078



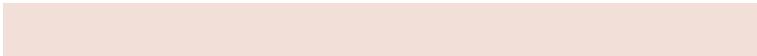
145.9220, 21.7305, -16.5946

Sweetspot

The Sweet Spot groups the original color and five complimentary colors.



147.9690, -16.2537, 33.3532



227.8830, -5.8583, 12.3806



142.1570, 12.2476, 38.4503



113.7190, -3.8055, 7.2624



250.0000, 0.0000, 0.0000



122.0000, 0.0000, 0.0000

Same Dimension

The Same Dimension uses a secret algorithm to generate beautiful new colors.



147.9690, -16.2537, 33.3532



182.3860, -25.3333, 52.2815



167.9270, -26.0930, 15.8500



86.8650, -1.9054, 4.5034



72.4720, -35.7287, 73.2541



13.0680, -6.4425, 13.0954

Inverse Universe

The Inverse Universe completely reimagines the original color for something new.



153.0310, 16.2537, -33.3532



190.6140, 25.3333, -52.2815



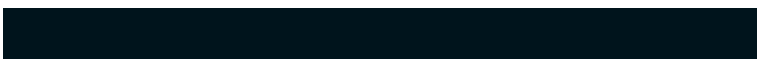
133.0730, 26.0930, -15.8500



87.5480, 2.1948, -3.9886



83.5280, 35.7287, -73.2541



14.9320, 6.4425, -13.0954

Previews

White Background



This preview shows how the YUV color 147.9690, -16.2537, 33.3532 looks on a white background.

Color Contrast Check

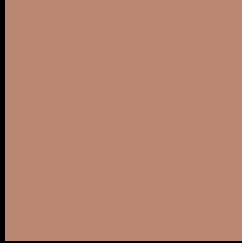
Large Text (above 18pt) WCAG AA ✓ Pass

Any Text WCAG AA × Fail

Large Text (above 18pt) WCAG AAA × Fail

Any Text WCAG AAA × Fail

Black Background



This preview shows how the YUV color 147.9690, -16.2537, 33.3532 looks on a black background.

Color Contrast Check

Large Text (above 18pt) WCAG AA ✓ Pass

Any Text WCAG AA ✓ Pass

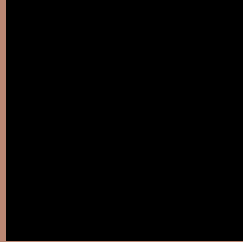
Large Text (above 18pt) WCAG AAA ✓ Pass

Any Text WCAG AAA × Fail

If you want to check with other color combinations, try the [Color Contrast Checker](#).

YUV 147.9690, -16.2537, 33.3532

Background



This preview shows how black text looks on a background with the YUV color 147.9690, -16.2537, 33.3532.



This preview shows how white text looks on a background with the YUV color 147.9690, -16.2537, 33.3532.

Color Blindness Simulation

Color vision deficiency is a very complex topic, and I could not describe the different causes any better than Wikipedia does, so if you want to learn more, you should check out their [article about color blindness](#).

Dichromacy



Original Color

147.9690, -16.2537, 33.3532

Protanopia

146.3140, -12.9728, 7.6176

Deuteranopia

147.1910, -16.3632, 21.7575



Tritanopia

149.4820, -4.1816, 34.6573

Trichromacy



Original Color

147.9690, -16.2537, 33.3532

Protanomaly

147.0270, -14.3103, 16.6393

Deuteranomaly

147.5120, -16.5214, 25.8610

Tritanomaly

148.7440, -8.2548, 34.4275

Monochromacy



Original Color

147.9690, -16.2537, 33.3532

Achromatopsia

148.0000, 0.0000, 0.0000

Achromatomaly

147.8830, -5.8583, 12.3806

CSS Examples

Text

The CSS property to change the color of the text to YUV 147.9690, -16.2537, 33.3532 is called "color". The color property can be set on classes, ids or directly on the HTML element.

This example shows how text in the color `rgb(186, 135, 115)` looks like.

```
.text, #text, p{  
    color:rgb(186, 135, 115)  
}
```

If you want to add a text shadow in that color use the text-shadow property, you can generate a text shadow directly with our [CSS Text Shadow Generator](#).

Here you see how black text with a 4 pixel rgb(186, 135, 115) colored shadow looks like.

```
.shadow{ text-shadow: 4px 4px 2px rgb(186, 135, 115) }
```

Border

The CSS property to change the border of an element to YUV 147.9690, -16.2537, 33.3532 is called "border".

The border property can be set on classes, ids or directly on the HTML element.

This example shows the color as border, it can be applied via the CSS property "border" or "border-color".

```
.border, #border, table{ border:4px solid rgb(186, 135, 115) }
```


If only the border color should be changed use the property `border-color`.

```
.border{ border-color:rgb(186, 135, 115) }
```

If you want to add a box shadow in that color use:

Here you see how a box with a 4 pixel `rgb(186, 135, 115)` colored shadow looks like.

```
.boxshadow{ -moz-box-shadow:4px 4px 4px  
4px rgb(186, 135, 115); -webkit-box-  
shadow:4px 4px 4px 4px rgb(186, 135, 115);  
box-shadow:4px 4px 4px 4px rgb(186, 135,  
115) }
```

Background

The CSS property to change the background color of an element to YUV 147.9690, -16.2537, 33.3532 is called "background". The background property can be set on classes, ids or directly on the HTML element.

```
.background, #background, body{  
background: rgb(186, 135, 115) }
```

If only the background color should be changed can be used:

```
.background{ background-color: rgb(186,  
135, 115) }
```

This example shows the color as background, it is applied via the CSS property "background".

To optimize and compress your CSS code, you can use our [online CSS compressor and optimizer](#) based on csstidy. If you want to create a linear or radial gradient as background or border, check our [CSS Gradient Generator](#).

Hey! You found this booklet interesting? Support Converting Colors with the new Membership Option!

The pro membership hides all ads, plus gives you double the colors in the color bucket, and more awesome pro features!

[Learn more, Memberships starting at \\$2.50/m!](#)

**Follow me
on Twitter!**

@ConvertingColor