

Converting Colors

YUV(148.0630, -22.2161,
32.3937)

Have a look what the booklet for
YUV(148.0630, -22.2161, 32.3937)
contains.

YUV(148.0630, -22.2161, 32.3937)	3
<i>Conversions</i>	4
<i>Details</i>	6
<i>Harmonies</i>	12
<i>Previews</i>	24
<i>Color Blindness Simulation</i>	28
<i>CSS Examples</i>	31

Color

**YUV(148.0630, -22.2161,
32.3937)**

Conversions

Conversions Part 1

Format	Color
Hex	B98A67
RGB	185, 138, 103
RGB Percent	73%, 54%, 40%
CMY	0.2745, 0.4588, 0.5961
CMYK	0.00, 0.25, 0.44, 0.27
HSL	26°, 37%, 56%
HSV	26°, 44%, 73%
XYZ	31.5442, 29.4705, 16.8578
YIQ	148.0630, 39.2470, -0.9210

Conversions

Conversions Part 2

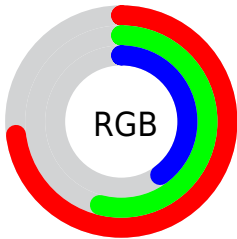
Format	Color
R_{YB}	185, 164, 103
Decimal	12159591
CIE _{Lab}	61.19, 13.44, 25.70
CIE _{LCh}	61, 29.003, 62.392
Yxy	29.4705, 0.4051, 0.3784
Android (android.graphics.Color)	4290349671 (0xFFB98A67)
YUV	148.0630, -22.2161, 32.3937
Hunter-Lab	54.2868, 8.7186, 19.5893

Details

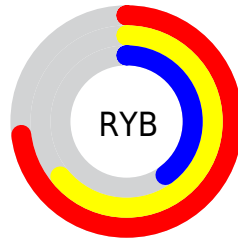
The YUV color **148.0630, -22.2161, 32.3937** is a dark color, and the websafe version is hex **CC9966**. A complement of this color would be **139.9370, 22.2161, -32.3937**, and the grayscale version is **148.0000, 0.0000, 0.0000**.

A 20% lighter version of the original color is **202.3300, -23.8267, 35.6676**, and **96.7960, -20.6054, 29.1199** is the 20% darker color. If you saturate the color by 10%, you get **139.5540, -26.8951, 39.8561**, and if you desaturate by 10%, it is **156.6860, -17.1002, 24.8314**.

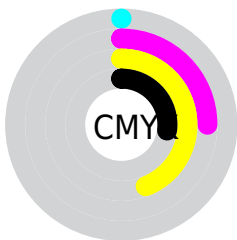
Distribution



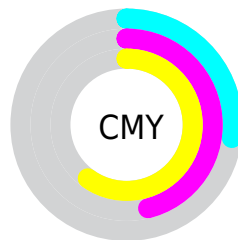
- Red (73%)
- Green (54%)
- Blue (40%)



- Red (73%)
- Yellow (64%)
- Blue (40%)



- Cyan (0%)
- Magenta (25%)
- Yellow (44%)
- Black (27%)



- Cyan (27%)
- Magenta (46%)
- Yellow (60%)

Brightness & Saturation Gradients

These gradients show how the YUV color 148.0630, -22.2161, 32.3937 changes by changing the brightness by 10 percent. The first figure shows a shift by +10% for each color and the second figure -10%.

Similar to the brightness gradients but the following saturation gradients show a change of the YUV color 148.0630, -22.2161, 32.3937 by changing the saturation by 10% instead.

■ 148.0630,
-22.2161, 32.3937

■ 148.0630,
-22.2161, 32.3937

■ 255.0000, 0.0000,
0.0000

■ 122.2800,
-21.3370, 30.4494

■ 202.3300,
-23.8267, 35.6676

■ 96.7960, -20.6054,
29.1199

■ 225.4320,
-21.9050, 25.9311

■ 72.7140, -19.5790,
26.5608

■ 245.6470,
-18.0670, 8.2026

■ 48.9310, -18.7000,
24.6165

■ 252.9480, -7.8624,
1.7996

■ 28.1740, -13.8898,
21.7724

■ 8.9700, -4.4222,
18.4433

■ 0.0000, 0.0000,

0.0000

■ 148.0630,
-22.2161, 32.3937

■ 148.0630,
-22.2161, 32.3937

■ 139.5540,
-26.8951, 39.8561

■ 156.6860,
-17.1002, 24.8314

■ 131.5180,
-32.3004, 46.9037

■ 164.6080,
-12.1317, 17.8838

■ 123.0090,
-36.9794, 54.3661

■ 173.2310, -7.0159,
10.3214

■ 114.9730,
-42.3847, 61.4137

■ 181.1530, -2.0474,
3.3738

■ 106.3500,
-47.5005, 68.9761

■ 189.7760, 3.0684,
-4.1886

■ 101.6880,
-50.1322, 73.0646

■ 198.2850, 7.7475,
-11.6509

■ 206.3210, 13.1527,
-18.6985

■ 214.8300, 17.8318,
-26.1609

■ 221.1560, 16.6851,
-31.7088

Harmonies

Analogous

The Analogous color harmony consists of three colors that are next to each other on the color wheel.



149.5940, -14.0968, 41.5751



148.0630, -22.2161, 32.3937



145.9700, -24.6352, 14.9353

Triad

The Triadic color harmony groups three colors that are evenly spaced from another and form a triangle on the color wheel.



148.0630, -22.2161, 32.3937



134.8040, 6.9986, -51.5711



150.0000, 20.2130, 3.5080

Complementary

The Complementary color scheme is a pair of colors which are on the opposite of each other on the color wheel.



148.0630, -22.2161, 32.3937



139.9370, 22.2161, -32.3937

Split Complementary

Split-complementary colors differ from the complementary color scheme. The scheme consists of three colors, the original color and two neighbors of the complement color.



144.8330, 26.7043, -25.2865



148.0630, -22.2161, 32.3937



132.2830, 20.5665, -63.3922

Square

The Square scheme is like the rectangle color scheme, but the four colors are evenly spaced on the color wheel.



148.0630, -22.2161, 32.3937



139.6360, -8.2015, -29.4988



137.6680, 26.7857, -51.4518



151.5100, 10.1016, 26.7397

Rectangle

The Rectangle color scheme consists of four colors that form a rectangle on the color wheel.



148.0630, -22.2161, 32.3937



144.2780, -21.8291, 1.5102



137.6680, 26.7857, -51.4518



148.6290, 22.8609, -5.8136

Sweetspot

The Sweet Spot groups the original color and five complimentary colors.



148.0630, -22.2161, 32.3937



225.9000, -8.3317, 12.3657



132.9900, 8.8789, 45.6128



111.3770, -5.1159, 7.5624



247.0000, 0.0000, 0.0000



120.0000, 0.0000, 0.0000

Same Dimension

The Same Dimension uses a secret algorithm to generate beautiful new colors.



148.0630, -22.2161, 32.3937



182.6710, -34.3478, 50.2775



171.5430, -33.7917, 11.8018



88.0390, -2.4842, 3.4738



85.3860, -42.0953, 61.9285



15.4160, -7.6001, 11.0362

Inverse Universe

The Inverse Universe completely reimagines the original color for something new.



139.9370, 22.2161, -32.3937



169.7420, 34.6372, -49.7627



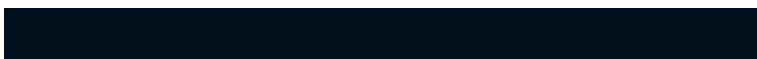
116.4570, 33.7917, -11.8018



86.9610, 2.4842, -3.4738



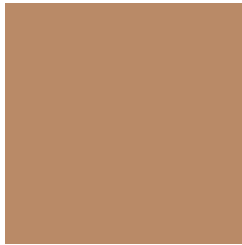
70.0270, 42.3847, -61.4137



12.5840, 7.6001, -11.0362

Previews

White Background



This preview shows how the YUV color 148.0630, -22.2161, 32.3937 looks on a white background.

Color Contrast Check

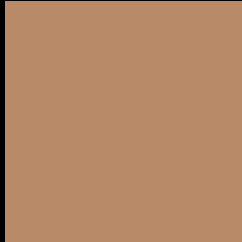
Large Text (above 18pt) WCAG AA ✓ Pass

Any Text WCAG AA × Fail

Large Text (above 18pt) WCAG AAA × Fail

Any Text WCAG AAA × Fail

Black Background



This preview shows how the YUV color 148.0630, -22.2161, 32.3937 looks on a black background.

Color Contrast Check

Large Text (above 18pt) WCAG AA ✓ Pass

Any Text WCAG AA ✓ Pass

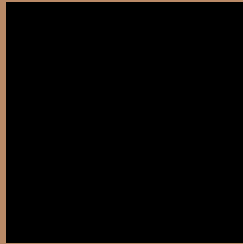
Large Text (above 18pt) WCAG AAA ✓ Pass

Any Text WCAG AAA × Fail

If you want to check with other color combinations, try the [Color Contrast Checker](#).

YUV 148.0630, -22.2161, 32.3937

Background



This preview shows how black text looks on a background with the YUV color 148.0630, -22.2161, 32.3937.



This preview shows how white text looks on a background with the YUV color 148.0630, -22.2161,

Color Blindness Simulation

Color vision deficiency is a very complex topic, and I could not describe the different causes any better than Wikipedia does, so if you want to learn more, you should check out their [article about color blindness](#).

Dichromacy



Original Color

148.0630, -22.2161, 32.3937

Protanopia

146.6150, -19.5302, 10.8616

Deuteranopia

147.9050, -22.6312, 25.5163



Tritanopia

150.8840, -3.8868, 33.4277

Trichromacy



Original Color

148.0630, -22.2161, 32.3937

Protanomaly

146.8440, -20.1361, 18.5538

Deuteranomaly

148.2150, -22.7840, 27.8754

Tritanomaly

150.0490, -10.8702, 33.2830

Monochromacy



Original Color

148.0630, -22.2161, 32.3937

Achromatopsia

148.0000, 0.0000, 0.0000

Achromatomaly

147.7150, -7.7475, 11.6509

CSS Examples

Text

The CSS property to change the color of the text to YUV 148.0630, -22.2161, 32.3937 is called "color". The color property can be set on classes, ids or directly on the HTML element.

This example shows how text in the color `rgb(185, 138, 103)` looks like.

```
.text, #text, p{  
    color:rgb(185, 138, 103)  
}
```

If you want to add a text shadow in that color use the text-shadow property, you can generate a text shadow directly with our [CSS Text Shadow Generator](#).

Here you see how black text with a 4 pixel rgb(185, 138, 103) colored shadow looks like.

```
.shadow{ text-shadow: 4px 4px 2px rgb(185, 138, 103) }
```

Border

The CSS property to change the border of an element to YUV 148.0630, -22.2161, 32.3937 is called "border".

The border property can be set on classes, ids or directly on the HTML element.

This example shows the color as border, it can be applied via the CSS property "border" or "border-color".

```
.border, #border, table{ border:4px solid rgb(185, 138, 103) }
```


If only the border color should be changed use the property `border-color`.

```
.border{ border-color:rgb(185, 138, 103) }
```

If you want to add a box shadow in that color use:

Here you see how a box with a 4 pixel `rgb(185, 138, 103)` colored shadow looks like.

```
.boxshadow{ -moz-box-shadow:4px 4px 4px  
4px rgb(185, 138, 103); -webkit-box-  
shadow:4px 4px 4px 4px rgb(185, 138, 103);  
box-shadow:4px 4px 4px 4px rgb(185, 138,  
103) }
```

Background

The CSS property to change the background color of an element to YUV 148.0630, -22.2161, 32.3937 is called "background". The background property can be set on classes, ids or directly on the HTML element.

```
.background, #background, body{  
background: rgb(185, 138, 103) }
```

If only the background color should be changed can be used:

```
.background{ background-color: rgb(185,  
138, 103) }
```

This example shows the color as background, it is applied via the CSS property "background".

To optimize and compress your CSS code, you can use our [online CSS compressor and optimizer](#) based on csstidy. If you want to create a linear or radial gradient as background or border, check our [CSS Gradient Generator](#).

Hey! You found this booklet interesting? Support Converting Colors with the new Membership Option!

The pro membership hides all ads, plus gives you double the colors in the color bucket, and more awesome pro features!

[Learn more, Memberships starting at \\$2.50/m!](#)

**Follow me
on Twitter!**

@ConvertingColor