

Converting Colors

YUV(148.1590, -14.3754,
37.5716)

Have a look what the booklet for
YUV(148.1590, -14.3754, 37.5716)
contains.

YUV(148.1590, -14.3754, 37.5716)	3
<i>Conversions</i>	4
<i>Details</i>	6
<i>Harmonies</i>	12
<i>Previews</i>	24
<i>Color Blindness Simulation</i>	28
<i>CSS Examples</i>	31

Color

**YUV(148.1590, -14.3754,
37.5716)**

Conversions

Conversions Part 1

Format	Color
Hex	BF8477
RGB	191, 132, 119
RGB Percent	75%, 52%, 47%
CMY	0.2510, 0.4824, 0.5333
CMYK	0.00, 0.31, 0.38, 0.25
HSL	11°, 36%, 61%
HSV	11°, 38%, 75%
XYZ	33.0669, 28.9108, 21.2903
YIQ	148.1590, 39.3370, 8.4650

Conversions

Conversions Part 2

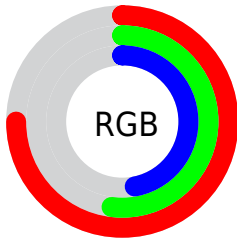
Format	Color
R_{YB}	191, 135, 119
Decimal	12551287
CIE _{Lab}	60.70, 21.04, 16.16
CIE _{LCh}	61, 26.534, 37.527
Yxy	28.9108, 0.3971, 0.3472
Android (android.graphics.Color)	4290741367 (0xFFBF8477)
YUV	148.1590, -14.3754, 37.5716
Hunter-Lab	53.7688, 15.6792, 14.1617

Details

The YUV color **148.1590, -14.3754, 37.5716** is a dark color, and the websafe version is hex **CC9999**. A complement of this color would be **161.8410, 14.3754, -37.5716**, and the grayscale version is **148.0000, 0.0000, 0.0000**.

A 20% lighter version of the original color is **202.5400, -15.5492, 40.7454**, and **96.8920, -12.7648, 34.2977** is the 20% darker color. If you saturate the color by 10%, you get **136.6010, -18.0443, 47.7079**, and if you desaturate by 10%, it is **159.7170, -10.7065, 27.4352**.

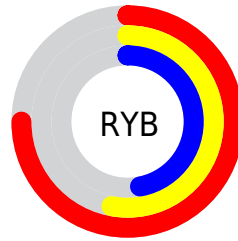
Distribution



Red (75%)

Green (52%)

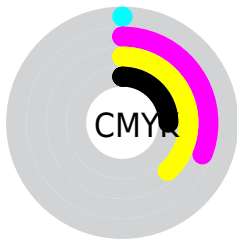
Blue (47%)



Red (75%)

Yellow (53%)

Blue (47%)

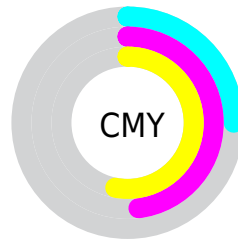


Cyan (0%)

Magenta (31%)

Yellow (38%)

Black (25%)



Cyan (25%)

Magenta (48%)

Yellow (53%)

Brightness & Saturation Gradients

These gradients show how the YUV color 148.1590, -14.3754, 37.5716 changes by changing the brightness by 10 percent. The first figure shows a shift by +10% for each color and the second figure -10%.

Similar to the brightness gradients but the following saturation gradients show a change of the YUV color 148.1590, -14.3754, 37.5716 by changing the saturation by 10% instead.

■ 148.1590,
-14.3754, 37.5716

■ 148.1590,
-14.3754, 37.5716

255.0000, 0.0000,
0.0000

■ 122.2620,
-13.9332, 35.7272

■ 202.5400,
-15.5492, 40.7454

■ 96.8920, -12.7648,
34.2977

■ 223.9620,
-12.3063, 27.2203

■ 72.1090, -11.8857,
32.3534

■ 244.1770, -8.4683,
9.4918

■ 49.0270, -10.8593,
29.7943

■ 25.6740, -12.1643,
28.3499

■ 10.8780, -4.8699,
22.0320

■ 0.0000, 0.0000,

0.0000

■ 148.1590,
-14.3754, 37.5716

■ 148.1590,
-14.3754, 37.5716

■ 136.6010,
-18.0443, 47.7079

■ 159.7170,
-10.7065, 27.4352

■ 125.6300,
-22.0026, 57.3295

■ 170.6880, -6.7482,
17.8136

■ 114.0720,
-25.6715, 67.4659

■ 182.2460, -3.0793,
7.6773

■ 102.5140,
-29.3404, 77.6022

■ 193.8040, 0.5896,
-2.4591

■ 91.4290, -33.7355,
87.3238

■ 204.8890, 4.9847,
-12.1807

■ 79.8710, -37.4044,
97.4601

■ 216.4470, 8.6536,
-22.3170

■ 77.0670, -37.9940,
99.9192

■ 228.0050, 12.3225,
-32.4534

■ 235.8640, 9.4340,
-39.3457

Harmonies

Analogous

The Analogous color harmony consists of three colors that are next to each other on the color wheel.



149.5040, -4.1925, 38.1460



148.1590, -14.3754, 37.5716



146.6710, -21.0368, 27.4755

Triad

The Triadic color harmony groups three colors that are evenly spaced from another and form a triangle on the color wheel.



148.1590, -14.3754, 37.5716



138.4340, -5.1440, -30.1986



145.6660, 23.3357, -18.1241

Complementary

The Complementary color scheme is a pair of colors which are on the opposite of each other on the color wheel.



148.1590, -14.3754, 37.5716



161.8410, 14.3754, -37.5716

Split Complementary

Split-complementary colors differ from the complementary color scheme. The scheme consists of three colors, the original color and two neighbors of the complement color.



139.1530, 24.5746, -42.2302



148.1590, -14.3754, 37.5716



134.5810, 8.5876, -47.8675

Square

The Square scheme is like the rectangle color scheme, but the four colors are evenly spaced on the color wheel.



148.1590, -14.3754, 37.5716



141.9930, -16.2655, -9.6409



134.1100, 19.6658, -54.4705



148.9250, 17.2920, 7.0818

Rectangle

The Rectangle color scheme consists of four colors that form a rectangle on the color wheel.



148.1590, -14.3754, 37.5716



145.2630, -22.3147, 17.3093



134.1100, 19.6658, -54.4705



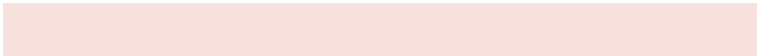
143.2520, 24.5258, -26.5310

Sweetspot

The Sweet Spot groups the original color and five complimentary colors.



148.1590, -14.3754, 37.5716



231.0080, -5.4269, 14.0250



147.3680, 15.5946, 38.2653



115.5450, -3.2267, 8.2920



252.0000, 0.0000, 0.0000



125.0000, 0.0000, 0.0000

Same Dimension

The Same Dimension uses a secret algorithm to generate beautiful new colors.



148.1590, -14.3754, 37.5716



180.9290, -22.1500, 57.9443



168.7040, -24.5041, 19.5536



88.8650, -1.9054, 4.5034



64.2650, -31.6826, 82.2056



12.7910, -6.3060, 15.9693

Inverse Universe

The Inverse Universe completely reimagines the original color for something new.



161.8410, 14.3754, -37.5716



202.0710, 22.1500, -57.9443



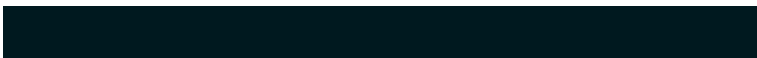
141.2960, 24.5041, -19.5536



90.7220, 1.6161, -5.0182



94.3220, 31.3933, -82.7204



18.2090, 6.3060, -15.9693

Previews

White Background



This preview shows how the YUV color 148.1590, -14.3754, 37.5716 looks on a white background.

Color Contrast Check

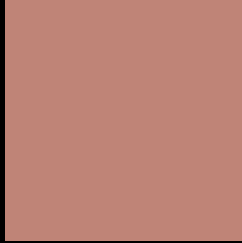
Large Text (above 18pt) WCAG AA ✓ Pass

Any Text WCAG AA × Fail

Large Text (above 18pt) WCAG AAA × Fail

Any Text WCAG AAA × Fail

Black Background



This preview shows how the YUV color 148.1590, -14.3754, 37.5716 looks on a black background.

Color Contrast Check

Large Text (above 18pt) WCAG AA ✓ Pass

Any Text WCAG AA ✓ Pass

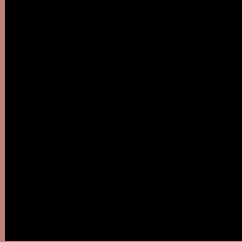
Large Text (above 18pt) WCAG AAA ✓ Pass

Any Text WCAG AAA × Fail

If you want to check with other color combinations, try the [Color Contrast Checker](#).

YUV 148.1590, -14.3754, 37.5716

Background



This preview shows how black text looks on a background with the YUV color 148.1590, -14.3754, 37.5716.



This preview shows how white text looks on a background with the YUV color 148.1590, -14.3754,

37.5716.

Color Blindness Simulation

Color vision deficiency is a very complex topic, and I could not describe the different causes any better than Wikipedia does, so if you want to learn more, you should check out their [article about color blindness](#).

Dichromacy



Original Color

148.1590, -14.3754, 37.5716

Protanopia

146.1120, -9.9152, 6.9178

Deuteranopia

147.2340, -14.9054, 20.8428



Tritanopia

149.2760, -5.0661, 38.3459

Trichromacy



Original Color

148.1590, -14.3754, 37.5716

Protanomaly

146.7220, -11.6949, 17.7838

Deuteranomaly

147.6800, -14.6322, 26.5906

Tritanomaly

148.7660, -8.2656, 37.9162

Monochromacy



Original Color

148.1590, -14.3754, 37.5716

Achromatopsia

148.0000, 0.0000, 0.0000

Achromatomaly

148.0080, -5.4269, 14.0250

CSS Examples

Text

The CSS property to change the color of the text to YUV 148.1590, -14.3754, 37.5716 is called "color". The color property can be set on classes, ids or directly on the HTML element.

This example shows how text in the color `rgb(191, 132, 119)` looks like.

```
.text, #text, p{  
    color:rgb(191, 132, 119)  
}
```

If you want to add a text shadow in that color use the text-shadow property, you can generate a text shadow directly with our [CSS Text Shadow Generator](#).

Here you see how black text with a 4 pixel rgb(191, 132, 119) colored shadow looks like.

```
.shadow{ text-shadow: 4px 4px 2px rgb(191, 132, 119) }
```

Border

The CSS property to change the border of an element to YUV 148.1590, -14.3754, 37.5716 is called "border".

The border property can be set on classes, ids or directly on the HTML element.

This example shows the color as border, it can be applied via the CSS property "border" or "border-color".

```
.border, #border, table{ border:4px solid rgb(191, 132, 119) }
```


If only the border color should be changed use the property `border-color`.

```
.border{ border-color:rgb(191, 132, 119) }
```

If you want to add a box shadow in that color use:

Here you see how a box with a 4 pixel `rgb(191, 132, 119)` colored shadow looks like.

```
.boxshadow{ -moz-box-shadow:4px 4px 4px  
4px rgb(191, 132, 119); -webkit-box-  
shadow:4px 4px 4px 4px rgb(191, 132, 119);  
box-shadow:4px 4px 4px 4px rgb(191, 132,  
119) }
```

Background

The CSS property to change the background color of an element to YUV 148.1590, -14.3754, 37.5716 is called "background". The background property can be set on classes, ids or directly on the HTML element.

```
.background, #background, body{  
background: rgb(191, 132, 119) }
```

If only the background color should be changed can be used:

```
.background{ background-color: rgb(191,  
132, 119) }
```

This example shows the color as background, it is applied via the CSS property "background".

To optimize and compress your CSS code, you can use our [online CSS compressor and optimizer](#) based on csstidy. If you want to create a linear or radial gradient as background or border, check our [CSS Gradient Generator](#).

Hey! You found this booklet interesting? Support Converting Colors with the new Membership Option!

The pro membership hides all ads, plus gives you double the colors in the color bucket, and more awesome pro features!

[Learn more, Memberships starting at \\$2.50/m!](#)

**Follow me
on Twitter!**

@ConvertingColor