

Converting Colors

YUV(148.5260, -24.4163,
38.1267)

Have a look what the booklet for
YUV(148.5260, -24.4163, 38.1267)
contains.

YUV(148.5260, -24.4163, 38.1267)	3
<i>Conversions</i>	4
<i>Details</i>	6
<i>Harmonies</i>	12
<i>Previews</i>	24
<i>Color Blindness Simulation</i>	28
<i>CSS Examples</i>	31

Color

**YUV(148.5260, -24.4163,
38.1267)**

Conversions

Conversions Part 1

Format	Color
Hex	C08863
RGB	192, 136, 99
RGB Percent	75%, 53%, 39%
CMY	0.2471, 0.4667, 0.6118
CMYK	0.00, 0.29, 0.48, 0.25
HSL	24°, 42%, 57%
HSV	24°, 48%, 75%
XYZ	32.7945, 29.7156, 15.8116
YIQ	148.5260, 45.2530, 0.3650

Conversions

Conversions Part 2

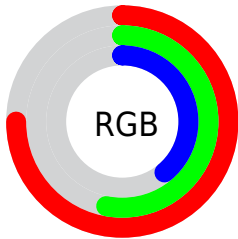
Format	Color
RYB	192, 160, 99
Decimal	12617827
CIELab	61.41, 17.04, 28.34
CIELCh	61, 33.064, 58.988
Yxy	29.7156, 0.4187, 0.3794
Android (android.graphics.Color)	4290807907 (0xFFC08863)
YUV	148.5260, -24.4163, 38.1267
Hunter-Lab	54.5121, 11.9897, 20.9609

Details

The YUV color **148.5260, -24.4163, 38.1267** is a dark color, and the websafe version is hex **CC9966**. A complement of this color would be **142.4740, 24.4163, -38.1267**, and the grayscale version is **149.0000, 0.0000, 0.0000**.

A 20% lighter version of the original color is **202.7930, -26.0269, 41.4005**, and **97.0740, -22.2215, 34.1381** is the 20% darker color. If you saturate the color by 10%, you get **139.3160, -29.2428, 46.2039**, and if you desaturate by 10%, it is **157.7360, -19.5898, 30.0495**.

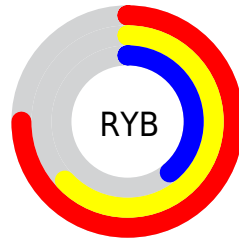
Distribution



Red (75%)

Green (53%)

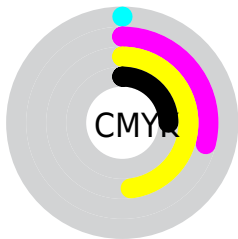
Blue (39%)



Red (75%)

Yellow (63%)

Blue (39%)

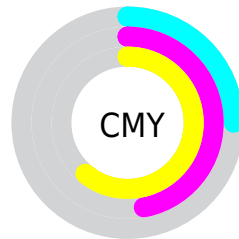


Cyan (0%)

Magenta (29%)

Yellow (48%)

Black (25%)



Cyan (25%)

Magenta (47%)

Yellow (61%)

Brightness & Saturation Gradients

These gradients show how the YUV color 148.5260, -24.4163, 38.1267 changes by changing the brightness by 10 percent. The first figure shows a shift by +10% for each color and the second figure -10%.

Similar to the brightness gradients but the following saturation gradients show a change of the YUV color 148.5260, -24.4163, 38.1267 by changing the saturation by 10% instead.

■ 148.5260,
-24.4163, 38.1267

■ 148.5260,
-24.4163, 38.1267

■ 255.0000, 0.0000,
0.0000

■ 122.7430,
-23.5373, 36.1824

■ 202.7930,
-26.0269, 41.4005

■ 97.0740, -22.2215,
34.1381

■ 223.8020,
-23.0734, 27.3606

■ 72.8780, -21.6319,
31.6790

■ 244.0170,
-19.2354, 9.6321

■ 48.6820, -21.0422,
29.2199

■ 252.4920, -9.6096,
2.1995

■ 28.1960, -13.9006,
25.2611

■ 10.1660, -5.0118,
20.9024

■ 0.0000, 0.0000,

0.0000

■ 148.5260,
-24.4163, 38.1267

■ 148.5260,
-24.4163, 38.1267

■ 139.3160,
-29.2428, 46.2039

■ 157.7360,
-19.5898, 30.0495

■ 130.6930,
-34.3586, 53.7662

■ 166.3590,
-14.4740, 22.4872

■ 121.3690,
-39.6219, 61.9434

■ 175.6830, -9.2107,
14.3100

■ 112.7460,
-44.7378, 69.5058

■ 184.3060, -4.0949,
6.7476

■ 103.5360,
-49.5642, 77.5829

■ 193.5160, 0.7316,
-1.3295

■ 102.0200,
-50.2959, 78.9125

■ 202.1390, 5.8475,
-8.8919

■ 211.3490, 10.6739,
-16.9691

■ 220.0860, 16.2266,
-24.6314

■ 227.3580, 13.6275,
-31.0090

Harmonies

Analogous

The Analogous color harmony consists of three colors that are next to each other on the color wheel.



150.2250, -14.4079, 48.0377



148.5260, -24.4163, 38.1267



146.3790, -28.2878, 19.8386

Triad

The Triadic color harmony groups three colors that are evenly spaced from another and form a triangle on the color wheel.



148.5260, -24.4163, 38.1267



132.3470, 6.7309, -59.0633



150.3030, 24.0076, -0.2657

Complementary

The Complementary color scheme is a pair of colors which are on the opposite of each other on the color wheel.



148.5260, -24.4163, 38.1267



142.4740, 24.4163, -38.1267

Split Complementary

Split-complementary colors differ from the complementary color scheme. The scheme consists of three colors, the original color and two neighbors of the complement color.



143.5160, 30.8046, -33.7785



148.5260, -24.4163, 38.1267



125.0140, 25.1361, -82.4503

Square

The Square scheme is like the rectangle color scheme, but the four colors are evenly spaced on the color wheel.



148.5260, -24.4163, 38.1267



138.9410, -10.8169, -30.6433



132.3500, 32.3655, -67.8359



152.3190, 13.1537, 27.7842

Rectangle

The Rectangle color scheme consists of four colors that form a rectangle on the color wheel.



148.5260, -24.4163, 38.1267



144.2630, -25.7657, 4.1543



132.3500, 32.3655, -67.8359



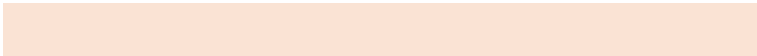
148.9210, 26.6609, -11.3317

Sweetspot

The Sweet Spot groups the original color and five complimentary colors.



148.5260, -24.4163, 38.1267



232.1670, -9.9423, 15.6395



133.3050, 11.1886, 51.4755



114.1600, -5.9949, 9.5067



252.0000, 0.0000, 0.0000



125.0000, 0.0000, 0.0000

Same Dimension

The Same Dimension uses a secret algorithm to generate beautiful new colors.



148.5260, -24.4163, 38.1267



182.4010, -38.1587, 59.2843



174.9410, -37.4389, 14.9607



92.3380, -2.6316, 4.0886



85.7070, -42.2536, 66.0320



17.4980, -8.6265, 13.5953

Inverse Universe

The Inverse Universe completely reimagines the original color for something new.



142.4740, 24.4163, -38.1267



172.5990, 38.1587, -59.2843



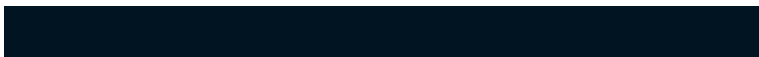
116.0590, 37.4389, -14.9607



91.6620, 2.6316, -4.0886



75.2930, 42.2536, -66.0320



15.5020, 8.6265, -13.5953

Previews

White Background



This preview shows how the YUV color 148.5260, -24.4163, 38.1267 looks on a white background.

Color Contrast Check

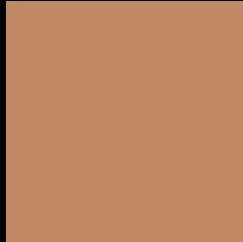
Large Text (above 18pt) WCAG AA ✓ Pass

Any Text WCAG AA × Fail

Large Text (above 18pt) WCAG AAA × Fail

Any Text WCAG AAA × Fail

Black Background



This preview shows how the YUV color 148.5260, -24.4163, 38.1267 looks on a black background.

Color Contrast Check

Large Text (above 18pt) WCAG AA ✓ Pass

Any Text WCAG AA ✓ Pass

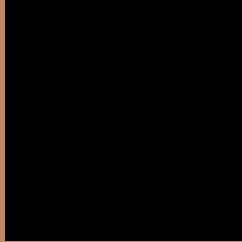
Large Text (above 18pt) WCAG AAA ✓ Pass

Any Text WCAG AAA × Fail

If you want to check with other color combinations, try the [Color Contrast Checker](#).

YUV 148.5260, -24.4163, 38.1267

Background



This preview shows how black text looks on a background with the YUV color 148.5260, -24.4163, 38.1267.



This preview shows how white text looks on a background with the YUV color 148.5260, -24.4163, 38.1267.

Color Blindness Simulation

Color vision deficiency is a very complex topic, and I could not describe the different causes any better than Wikipedia does, so if you want to learn more, you should check out their [article about color blindness](#).

Dichromacy



Original Color

148.5260, -24.4163, 38.1267

Protanopia

146.5720, -20.9880, 11.7764

Deuteranopia

147.7480, -24.5258, 26.5310



Tritanopia

151.4610, -5.6503, 39.0607

Trichromacy



Original Color

148.5260, -24.4163, 38.1267

Protanomaly

147.5840, -22.4729, 21.4128

Deuteranomaly

148.0690, -24.6840, 30.6345

Tritanomaly

150.6260, -12.6336, 38.9160

Monochromacy



Original Color

148.5260, -24.4163, 38.1267

Achromatopsia

149.0000, 0.0000, 0.0000

Achromatomaly

148.7970, -8.7739, 14.2100

CSS Examples

Text

The CSS property to change the color of the text to YUV 148.5260, -24.4163, 38.1267 is called "color". The color property can be set on classes, ids or directly on the HTML element.

This example shows how text in the color `rgb(192, 136, 99)` looks like.

```
.text, #text, p{  
    color:rgb(192, 136, 99)  
}
```

If you want to add a text shadow in that color use the text-shadow property, you can generate a text shadow directly with our [CSS Text Shadow Generator](#).

Here you see how black text with a 4 pixel rgb(192, 136, 99) colored shadow looks like.

```
.shadow{ text-shadow: 4px 4px 2px rgb(192, 136, 99) }
```

Border

The CSS property to change the border of an element to YUV 148.5260, -24.4163, 38.1267 is called "border".

The border property can be set on classes, ids or directly on the HTML element.

This example shows the color as border, it can be applied via the CSS property "border" or "border-color".

```
.border, #border, table{ border:4px solid rgb(192, 136, 99) }
```


If only the border color should be changed use the property `border-color`.

```
.border{ border-color:rgb(192, 136, 99) }
```

If you want to add a box shadow in that color use:

Here you see how a box with a 4 pixel `rgb(192, 136, 99)` colored shadow looks like.

```
.boxshadow{ -moz-box-shadow:4px 4px 4px  
4px rgb(192, 136, 99); -webkit-box-  
shadow:4px 4px 4px 4px rgb(192, 136, 99);  
box-shadow:4px 4px 4px 4px rgb(192, 136,  
99) }
```

Background

The CSS property to change the background color of an element to YUV 148.5260, -24.4163, 38.1267 is called "background". The background property can be set on classes, ids or directly on the HTML element.

```
.background, #background, body{  
background: rgb(192, 136, 99) }
```

If only the background color should be changed can be used:

```
.background{ background-color: rgb(192,  
136, 99) }
```

This example shows the color as background, it is applied via the CSS property "background".

To optimize and compress your CSS code, you can use our [online CSS compressor and optimizer](#) based on csstidy. If you want to create a linear or radial gradient as background or border, check our [CSS Gradient Generator](#).

Hey! You found this booklet interesting? Support Converting Colors with the new Membership Option!

The pro membership hides all ads, plus gives you double the colors in the color bucket, and more awesome pro features!

[Learn more, Memberships starting at \\$2.50/m!](#)

**Follow me
on Twitter!**

@ConvertingColor