

Converting Colors

YUV(148.5510, -19.0056,
29.3348)

Have a look what the booklet for
YUV(148.5510, -19.0056, 29.3348)
contains.

YUV(148.5510, -19.0056, 29.3348)	3
<i>Conversions</i>	4
<i>Details</i>	6
<i>Harmonies</i>	12
<i>Previews</i>	24
<i>Color Blindness Simulation</i>	28
<i>CSS Examples</i>	31

Color

**YUV(148.5510, -19.0056,
29.3348)**

Conversions

Conversions Part 1

Format	Color
Hex	B68B6E
RGB	182, 139, 110
RGB Percent	71%, 55%, 43%
CMY	0.2863, 0.4549, 0.5686
CMYK	0.00, 0.24, 0.40, 0.29
HSL	24°, 33%, 57%
HSV	24°, 40%, 71%
XYZ	31.3385, 29.5361, 18.8012
YIQ	148.5510, 34.9370, 0.0970

Conversions

Conversions Part 2

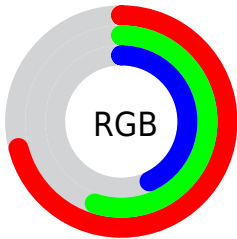
Format	Color
R_{YB}	182, 159, 110
Decimal	11963246
CIE Lab	61.25, 12.44, 21.82
CIE LCh	61, 25.119, 60.315
Yxy	29.5361, 0.3933, 0.3707
Android (android.graphics.Color)	4290153326 (0xFFB68B6E)
YUV	148.5510, -19.0056, 29.3348
Hunter-Lab	54.3471, 7.8220, 17.5319

Details

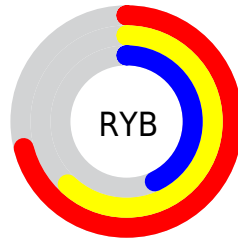
The YUV color **148.5510, -19.0056, 29.3348** is a dark color, and the websafe version is hex **CC9966**. A complement of this color would be **143.4490, 19.0056, -29.3348**, and the grayscale version is **149.0000, 0.0000, 0.0000**.

A 20% lighter version of the original color is **203.2200, -20.3215, 31.3791**, and **97.2840, -17.3950, 26.0609** is the 20% darker color. If you saturate the color by 10%, you get **140.0420, -23.6847, 36.7972**, and if you desaturate by 10%, it is **157.0600, -14.3266, 21.8724**.

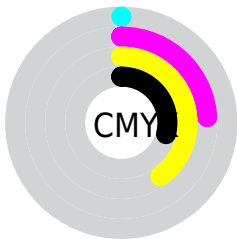
Distribution



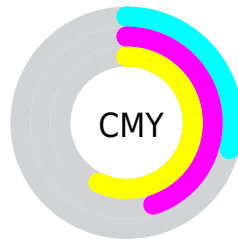
- Red (71%)
- Green (55%)
- Blue (43%)



- Red (71%)
- Yellow (62%)
- Blue (43%)



- Cyan (0%)
- Magenta (24%)
- Yellow (40%)
- Black (29%)



- Cyan (29%)
- Magenta (45%)
- Yellow (57%)

Brightness & Saturation Gradients

These gradients show how the YUV color 148.5510, -19.0056, 29.3348 changes by changing the brightness by 10 percent. The first figure shows a shift by +10% for each color and the second figure -10%.

Similar to the brightness gradients but the following saturation gradients show a change of the YUV color 148.5510, -19.0056, 29.3348 by changing the saturation by 10% instead.

■ 148.5510,
-19.0056, 29.3348

■ 148.5510,
-19.0056, 29.3348

■ 255.0000, 0.0000,
0.0000

■ 122.0670,
-18.2740, 28.0052

■ 203.2200,
-20.3215, 31.3791

■ 97.2840, -17.3950,
26.0609

■ 226.9310,
-18.7000, 24.6165

■ 72.9140, -16.2266,
24.6314

■ 247.1460,
-14.8620, 6.8880

■ 50.1310, -15.3476,
22.6871

■ 253.8600, -4.3680,
0.9998

■ 28.4620, -14.0318,
20.6428

■ 8.6710, -4.2748,
17.8285

■ 0.0000, 0.0000,

0.0000

■ 148.5510,
-19.0056, 29.3348

■ 148.5510,
-19.0056, 29.3348

■ 140.0420,
-23.6847, 36.7972

■ 157.0600,
-14.3266, 21.8724

■ 131.5330,
-28.3638, 44.2596

■ 165.5690, -9.6475,
14.4100

■ 122.9100,
-33.4796, 51.8219

■ 174.1920, -4.5317,
6.8476

■ 114.9880,
-38.4481, 58.7695

■ 182.1140, 0.4368,
-0.1000

■ 106.4790,
-43.1271, 66.2319

■ 190.6230, 5.1159,
-7.5624

■ 97.9700, -47.8062,
73.6943

■ 199.1320, 9.7949,
-15.0248

■ 97.2690, -47.9536,
74.3091

■ 207.6410, 14.4740,
-22.4872

■ 216.1500, 19.1530,
-29.9496

■ 222.6070, 15.9697,
-35.6123

Harmonies

Analogous

The Analogous color harmony consists of three colors that are next to each other on the color wheel.



149.9570, -11.3178, 36.8717



148.5510, -19.0056, 29.3348



146.4800, -21.4356, 15.3650

Triad

The Triadic color harmony groups three colors that are evenly spaced from another and form a triangle on the color wheel.



148.5510, -19.0056, 29.3348



137.8870, 4.4927, -41.1199



149.7070, 17.8924, 1.1340

Complementary

The Complementary color scheme is a pair of colors which are on the opposite of each other on the color wheel.



148.5510, -19.0056, 29.3348



143.4490, 19.0056, -29.3348

Split Complementary

Split-complementary colors differ from the complementary color scheme. The scheme consists of three colors, the original color and two neighbors of the complement color.



145.8180, 22.7677, -22.6424



148.5510, -19.0056, 29.3348



136.8070, 15.8711, -50.6967

Square

The Square scheme is like the rectangle color scheme, but the four colors are evenly spaced on the color wheel.



148.5510, -19.0056, 29.3348



141.0820, -7.9284, -23.7509



139.9850, 22.6854, -42.9598



151.5480, 9.0968, 22.3214

Rectangle

The Rectangle color scheme consists of four colors that form a rectangle on the color wheel.



148.5510, -19.0056, 29.3348



144.9730, -19.2137, 2.6547



139.9850, 22.6854, -42.9598



148.8200, 19.8087, -6.8581

Sweetspot

The Sweet Spot groups the original color and five complimentary colors.



148.5510, -19.0056, 29.3348



223.8290, -7.3107, 11.5510



136.4300, 8.1690, 39.9649



112.1920, -4.5317, 6.8476



247.0000, 0.0000, 0.0000



120.0000, 0.0000, 0.0000

Same Dimension

The Same Dimension uses a secret algorithm to generate beautiful new colors.



148.5510, -19.0056, 29.3348



185.6040, -29.3848, 45.0743



169.6830, -29.4237, 10.8020



87.4520, -2.1948, 3.9886



83.6250, -41.2271, 63.4729



14.8290, -7.3107, 11.5510

Inverse Universe

The Inverse Universe completely reimagines the original color for something new.



143.4490, 19.0056, -29.3348



177.3960, 29.3848, -45.0743



122.3170, 29.4237, -10.8020



86.9610, 2.4842, -3.4738



72.3750, 41.2271, -63.4729



13.1710, 7.3107, -11.5510

Previews

White Background



This preview shows how the YUV color 148.5510, -19.0056, 29.3348 looks on a white background.

Color Contrast Check

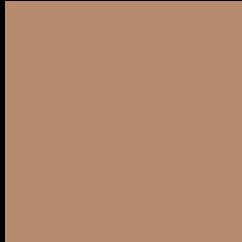
Large Text (above 18pt) WCAG AA ✓ Pass

Any Text WCAG AA × Fail

Large Text (above 18pt) WCAG AAA × Fail

Any Text WCAG AAA × Fail

Black Background



This preview shows how the YUV color 148.5510, -19.0056, 29.3348 looks on a black background.

Color Contrast Check

Large Text (above 18pt) WCAG AA ✓ Pass

Any Text WCAG AA ✓ Pass

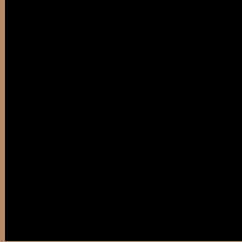
Large Text (above 18pt) WCAG AAA ✓ Pass

Any Text WCAG AAA × Fail

If you want to check with other color combinations, try the [Color Contrast Checker](#).

YUV 148.5510, -19.0056, 29.3348

Background



This preview shows how black text looks on a background with the YUV color 148.5510, -19.0056, 29.3348.



This preview shows how white text looks on a background with the YUV color 148.5510, -19.0056, 29.3348.

Color Blindness Simulation

Color vision deficiency is a very complex topic, and I could not describe the different causes any better than Wikipedia does, so if you want to learn more, you should check out their [article about color blindness](#).

Dichromacy



Original Color

148.5510, -19.0056, 29.3348

Protanopia

147.1140, -16.3252, 9.5470

Deuteranopia

148.1050, -19.2788, 23.5869



Tritanopia

150.5030, -2.7130, 30.2539

Trichromacy



Original Color

148.5510, -19.0056, 29.3348

Protanomaly

147.9300, -17.2205, 16.7244

Deuteranomaly

148.4150, -19.4316, 25.9460

Tritanomaly

149.8960, -8.8227, 29.9092

Monochromacy



Original Color

148.5510, -19.0056, 29.3348

Achromatopsia

149.0000, 0.0000, 0.0000

Achromatomaly

148.6440, -6.7265, 10.8362

CSS Examples

Text

The CSS property to change the color of the text to YUV 148.5510, -19.0056, 29.3348 is called "color". The color property can be set on classes, ids or directly on the HTML element.

This example shows how text in the color `rgb(182, 139, 110)` looks like.

```
.text, #text, p{  
    color:rgb(182, 139, 110)  
}
```

If you want to add a text shadow in that color use the text-shadow property, you can generate a text shadow directly with our [CSS Text Shadow Generator](#).

Here you see how black text with a 4 pixel rgb(182, 139, 110) colored shadow looks like.

```
.shadow{ text-shadow: 4px 4px 2px rgb(182, 139, 110) }
```

Border

The CSS property to change the border of an element to YUV 148.5510, -19.0056, 29.3348 is called "border".

The border property can be set on classes, ids or directly on the HTML element.

This example shows the color as border, it can be applied via the CSS property "border" or "border-color".

```
.border, #border, table{ border:4px solid rgb(182, 139, 110) }
```


If only the border color should be changed use the property `border-color`.

```
.border{ border-color:rgb(182, 139, 110) }
```

If you want to add a box shadow in that color use:

Here you see how a box with a 4 pixel `rgb(182, 139, 110)` colored shadow looks like.

```
.boxshadow{ -moz-box-shadow:4px 4px 4px  
4px rgb(182, 139, 110); -webkit-box-  
shadow:4px 4px 4px 4px rgb(182, 139, 110);  
box-shadow:4px 4px 4px 4px rgb(182, 139,  
110) }
```

Background

The CSS property to change the background color of an element to YUV 148.5510, -19.0056, 29.3348 is called "background". The background property can be set on classes, ids or directly on the HTML element.

```
.background, #background, body{  
background: rgb(182, 139, 110) }
```

If only the background color should be changed can be used:

```
.background{ background-color: rgb(182,  
139, 110) }
```

This example shows the color as background, it is applied via the CSS property "background".

To optimize and compress your CSS code, you can use our [online CSS compressor and optimizer](#) based on csstidy. If you want to create a linear or radial gradient as background or border, check our [CSS Gradient Generator](#).

Hey! You found this booklet interesting? Support Converting Colors with the new Membership Option!

The pro membership hides all ads, plus gives you double the colors in the color bucket, and more awesome pro features!

[Learn more, Memberships starting at \\$2.50/m!](#)

**Follow me
on Twitter!**

@ConvertingColor