

Converting Colors

YUV(148.5750, -11.6225,
88.0727)

Have a look what the booklet for
YUV(148.5750, -11.6225, 88.0727)
contains.

YUV(148.5750, -11.6225, 88.0727)	3
<i>Conversions</i>	4
<i>Details</i>	6
<i>Harmonies</i>	12
<i>Previews</i>	24
<i>Color Blindness Simulation</i>	28
<i>CSS Examples</i>	31

Color

**YUV(148.5750, -11.6225,
88.0727)**

Conversions

Conversions Part 1

Format	Color
Hex	F9667D
RGB	249, 102, 125
RGB Percent	98%, 40%, 49%
CMY	0.0235, 0.6000, 0.5098
CMYK	0.00, 0.59, 0.50, 0.02
HSL	351°, 92%, 69%
HSV	351°, 59%, 98%
XYZ	47.5200, 31.1231, 22.9048
YIQ	148.5750, 80.2290, 38.3170

Conversions

Conversions Part 2

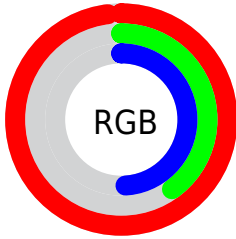
Format	Color
R _Y B	249, 102, 125
Decimal	16344701
CIE Lab	62.61, 58.00, 16.59
CIE LCh	63, 60.324, 15.963
Yxy	31.1231, 0.4680, 0.3065
Android (android.graphics.Color)	4294534781 (0xFFFF9667D)
YUV	148.5750, -11.6225, 88.0727
Hunter-Lab	55.7881, 54.4159, 14.7091

Details

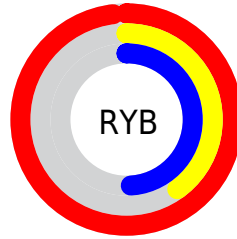
The YUV color **148.5750, -11.6225, 88.0727** is a light color, and the websafe version is hex **FF6666**. A complement of this color would be **202.4250, 11.6225, -88.0727**, and the grayscale version is **149.0000, 0.0000, 0.0000**.

A 20% lighter version of the original color is **189.1690, -5.9993, 57.7338**, and **89.8180, -6.8123, 85.2286** is the 20% darker color. If you saturate the color by 10%, you get **131.5060, -13.5605, 103.0422**, and if you desaturate by 10%, it is **165.6440, -9.6845, 73.1032**.

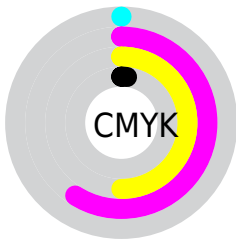
Distribution



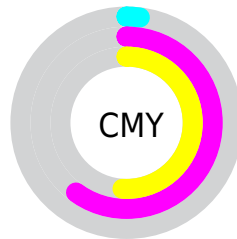
- Red (98%)
- Green (40%)
- Blue (49%)



- Red (98%)
- Yellow (40%)
- Blue (49%)



- Cyan (0%)
- Magenta (59%)
- Yellow (50%)
- Black (2%)



- Cyan (2%)
- Magenta (60%)
- Yellow (51%)

Brightness & Saturation Gradients

These gradients show how the YUV color 148.5750, -11.6225, 88.0727 changes by changing the brightness by 10 percent. The first figure shows a shift by +10% for each color and the second figure -10%.

Similar to the brightness gradients but the following saturation gradients show a change of the YUV color 148.5750, -11.6225, 88.0727 by changing the saturation by 10% instead.

■ 148.5750,
-11.6225, 88.0727

■ 148.5750,
-11.6225, 88.0727

■ 255.0000, 0.0000,
0.0000

■ 120.0200, -9.8699,
85.9285

■ 189.1690, -5.9993,
57.7338

■ 89.8180, -6.8123,
85.2286

■ 209.3840, -2.1613,
40.0052

■ 53.0990, 0.4442,
91.1212

■ 229.5990, 1.6767,
22.2767

■ 41.7350, -4.3064,
74.7774

■ 249.1300, 2.8939,
5.1480

■ 30.5560, -9.6411,
59.1484

■ 21.1580, -9.4449,
42.8344

■ 11.7750, -5.3121,

23.8763

■ 0.0000, 0.0000,
0.0000

■ 148.5750,
-11.6225, 88.0727

■ 148.5750,
-11.6225, 88.0727

■ 131.5060,
-13.5605, 103.0422

■ 165.6440, -9.6845,
73.1032

■ 114.4370,
-15.4984, 118.0118

■ 182.7130, -7.7465,
58.1337

■ 97.3680, -17.4364,
132.9813

■ 199.7820, -5.8085,
43.1642

■ 80.2990, -19.3744,
147.9508

■ 216.8510, -3.8705,
28.1947

■ 78.8970, -19.6692,
149.1803

■ 233.9200, -1.9326,
13.2252

250.4020, 0.2948,
-1.2296

253.2060, 0.8844,
-3.6887

Harmonies

Analogous

The Analogous color harmony consists of three colors that are next to each other on the color wheel.



152.6050, 13.0127, 73.1374



148.5750, -11.6225, 88.0727



148.1950, -35.5921, 76.1280

Triad

The Triadic color harmony groups three colors that are evenly spaced from another and form a triangle on the color wheel.



148.5750, -11.6225, 88.0727



134.3210, -30.7243, -38.8695



125.9250, 63.6340, -110.4362

Complementary

The Complementary color scheme is a pair of colors which are on the opposite of each other on the color wheel.



148.5750, -11.6225, 88.0727



202.4250, 11.6225, -88.0727

Split Complementary

Split-complementary colors differ from the complementary color scheme. The scheme consists of three colors, the original color and two neighbors of the complement color.



128.0160, 48.7991, -112.2700



148.5750, -11.6225, 88.0727



117.4480, 3.2301, -103.0019

Square

The Square scheme is like the rectangle color scheme, but the four colors are evenly spaced on the color wheel.



148.5750, -11.6225, 88.0727



142.2980, -52.4049, 8.5087



124.3050, 26.9646, -109.0155



146.1560, 53.6601, -37.8478

Rectangle

The Rectangle color scheme consists of four colors that form a rectangle on the color wheel.



148.5750, -11.6225, 88.0727



147.4580, -48.0468, 57.4803



124.3050, 26.9646, -109.0155



127.5890, 59.8556, -111.8956

Sweetspot

The Sweet Spot groups the original color and five complimentary colors.



148.5750, -11.6225, 88.0727



223.5520, -3.7231, 27.5799



155.5350, 46.0782, 60.9208



108.2410, -2.0908, 17.3286



0.0000, 0.0000, 0.0000



128.0000, 0.0000, 0.0000

Same Dimension

The Same Dimension uses a secret algorithm to generate beautiful new colors.



148.5750, -11.6225, 88.0727



131.3110, -14.4503, 108.4753



174.7160, -35.8490, 65.1471



116.1150, -1.0427, 7.7921



59.9310, -14.7560, 113.1935



19.3790, -4.6238, 36.5016

Inverse Universe

The Inverse Universe completely reimagines the original color for something new.



148.5750, -11.6225, 88.0727



131.3110, -14.4503, 108.4753



176.2840, 35.8490, -65.1471



116.1150, -1.0427, 7.7921



59.9310, -14.7560, 113.1935



19.3790, -4.6238, 36.5016

Previews

White Background



This preview shows how the YUV color 148.5750, -11.6225, 88.0727 looks on a white background.

Color Contrast Check

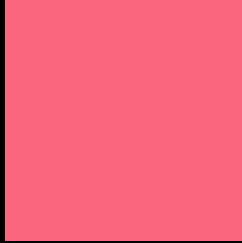
Large Text (above 18pt) WCAG AA × Fail

Any Text WCAG AA × Fail

Large Text (above 18pt) WCAG AAA × Fail

Any Text WCAG AAA × Fail

Black Background



This preview shows how the YUV color 148.5750, -11.6225, 88.0727 looks on a black background.

Color Contrast Check

Large Text (above 18pt) WCAG AA ✓ Pass

Any Text WCAG AA ✓ Pass

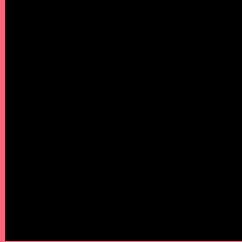
Large Text (above 18pt) WCAG AAA ✓ Pass

Any Text WCAG AAA ✓ Pass

If you want to check with other color combinations, try the [Color Contrast Checker](#).

YUV 148.5750, -11.6225, 88.0727

Background



This preview shows how black text looks on a background with the YUV color 148.5750, -11.6225, 88.0727.



This preview shows how white text looks on a background with the YUV color 148.5750, -11.6225, 88.0727.

Color Blindness Simulation

Color vision deficiency is a very complex topic, and I could not describe the different causes any better than Wikipedia does, so if you want to learn more, you should check out their [article about color blindness](#).

Dichromacy



Original Color

148.5750, -11.6225, 88.0727

Protanopia

152.0820, -1.0264, 2.5591

Deuteranopia

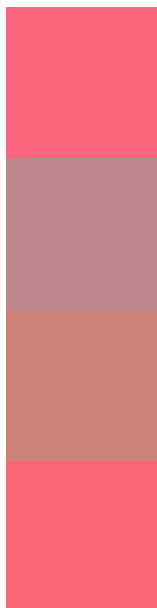
152.3760, -16.9474, 22.4722



Tritanopia

147.8540, -18.1690, 87.8280

Trichromacy



Original Color

148.5750, -11.6225, 88.0727

Protanomaly

150.6560, -4.7604, 33.6277

Deuteranomaly

151.1000, -14.8393, 46.3933

Tritanomaly

147.8370, -15.6956, 87.8430

Monochromacy



Original Color

148.5750, -11.6225, 88.0727

Achromatopsia

149.0000, 0.0000, 0.0000

Achromatomaly

148.7590, -4.3182, 31.7834

CSS Examples

Text

The CSS property to change the color of the text to YUV 148.5750, -11.6225, 88.0727 is called "color". The color property can be set on classes, ids or directly on the HTML element.

This example shows how text in the color `rgb(249, 102, 125)` looks like.

```
.text, #text, p{  
    color:rgb(249, 102, 125)  
}
```

If you want to add a text shadow in that color use the text-shadow property, you can generate a text shadow directly with our [CSS Text Shadow Generator](#).

Here you see how black text with a 4 pixel rgb(249, 102, 125) colored shadow looks like.

```
.shadow{ text-shadow: 4px 4px 2px rgb(249, 102, 125) }
```

Border

The CSS property to change the border of an element to YUV 148.5750, -11.6225, 88.0727 is called "border".

The border property can be set on classes, ids or directly on the HTML element.

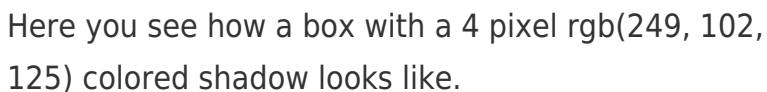
This example shows the color as border, it can be applied via the CSS property "border" or "border-color".

```
.border, #border, table{ border:4px solid rgb(249, 102, 125) }
```


If only the border color should be changed use the property `border-color`.

```
.border{ border-color:rgb(249, 102, 125) }
```

If you want to add a box shadow in that color use:



Here you see how a box with a 4 pixel `rgb(249, 102, 125)` colored shadow looks like.

```
.boxshadow{ -moz-box-shadow:4px 4px 4px 4px rgb(249, 102, 125); -webkit-box-shadow:4px 4px 4px 4px rgb(249, 102, 125); box-shadow:4px 4px 4px 4px rgb(249, 102, 125) }
```

Background

The CSS property to change the background color of an element to YUV 148.5750, -11.6225, 88.0727 is called "background". The background property can be set on classes, ids or directly on the HTML element.

```
.background, #background, body{  
background: rgb(249, 102, 125) }
```

If only the background color should be changed can be used:

```
.background{ background-color: rgb(249,  
102, 125) }
```

This example shows the color as background, it is applied via the CSS property "background".

To optimize and compress your CSS code, you can use our [online CSS compressor and optimizer](#) based on csstidy. If you want to create a linear or radial gradient as background or border, check our [CSS Gradient Generator](#).

Hey! You found this booklet interesting? Support Converting Colors with the new Membership Option!

The pro membership hides all ads, plus gives you double the colors in the color bucket, and more awesome pro features!

[Learn more, Memberships starting at \\$2.50/m!](#)

**Follow me
on Twitter!**

@ConvertingColor