

Converting Colors

YUV(148.6160, -14.1077,
45.0638)

Have a look what the booklet for
YUV(148.6160, -14.1077, 45.0638)
contains.

YUV(148.6160, -14.1077, 45.0638)	3
<i>Conversions</i>	4
<i>Details</i>	6
<i>Harmonies</i>	12
<i>Previews</i>	24
<i>Color Blindness Simulation</i>	28
<i>CSS Examples</i>	31

Color

**YUV(148.6160, -14.1077,
45.0638)**

Conversions

Conversions Part 1

Format	Color
Hex	C88078
RGB	200, 128, 120
RGB Percent	78%, 50%, 47%
CMY	0.2157, 0.4980, 0.5294
CMYK	0.00, 0.36, 0.40, 0.22
HSL	6°, 42%, 63%
HSV	6°, 40%, 78%
XYZ	34.9288, 29.0738, 21.5402
YIQ	148.6160, 45.4800, 12.7760

Conversions

Conversions Part 2

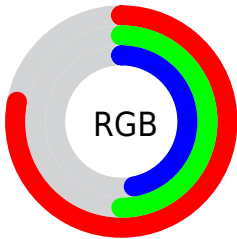
Format	Color
R _Y B	200, 129, 120
Decimal	13140088
CIE Lab	60.85, 26.90, 15.96
CIE LCh	61, 31.280, 30.675
Yxy	29.0738, 0.4083, 0.3399
Android (android.graphics.Color)	4291330168 (0xFFC88078)
YUV	148.6160, -14.1077, 45.0638
Hunter-Lab	53.9201, 21.2699, 14.0587

Details

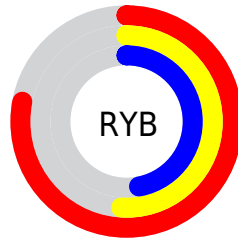
The YUV color **148.6160, -14.1077, 45.0638** is a light color, and the websafe version is hex **CC9999**. A complement of this color would be **171.3840, 14.1077, -45.0638**, and the grayscale version is **149.0000, 0.0000, 0.0000**.

A 20% lighter version of the original color is **202.1000, -14.8393, 46.3933**, and **97.0500, -12.3496, 41.1752** is the 20% darker color. If you saturate the color by 10%, you get **135.7700, -17.6346, 56.3297**, and if you desaturate by 10%, it is **161.4620, -10.5808, 33.7978**.

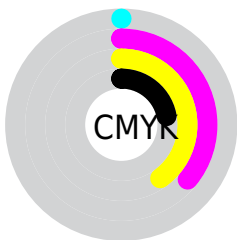
Distribution



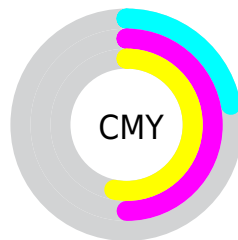
- Red (78%)
- Green (50%)
- Blue (47%)



- Red (78%)
- Yellow (51%)
- Blue (47%)



- Cyan (0%)
- Magenta (36%)
- Yellow (40%)
- Black (22%)



- Cyan (22%)
- Magenta (50%)
- Yellow (53%)

Brightness & Saturation Gradients

These gradients show how the YUV color 148.6160, -14.1077, 45.0638 changes by changing the brightness by 10 percent. The first figure shows a shift by +10% for each color and the second figure -10%.

Similar to the brightness gradients but the following saturation gradients show a change of the YUV color 148.6160, -14.1077, 45.0638 by changing the saturation by 10% instead.

■ 148.6160,
-14.1077, 45.0638

■ 148.6160,
-14.1077, 45.0638

■ 255.0000, 0.0000,
0.0000

■ 121.8330,
-13.2287, 43.1195

■ 202.1000,
-14.8393, 46.3933

■ 97.0500, -12.3496,
41.1752

■ 221.7280,
-10.7119, 29.1795

■ 71.9680, -11.3232,
38.6161

■ 241.9430, -6.8739,
11.4510

■ 48.2990, -10.0074,
36.5718

■ 22.8860, -10.2968,
36.0570

■ 12.6720, -5.7543,
25.7207

■ 0.0000, 0.0000,

0.0000

■ 148.6160,
-14.1077, 45.0638

■ 148.6160,
-14.1077, 45.0638

■ 135.7700,
-17.6346, 56.3297

■ 161.4620,
-10.5808, 33.7978

■ 122.9240,
-21.1615, 67.5957

■ 174.3080, -7.0538,
22.5319

■ 110.0780,
-24.6885, 78.8616

■ 187.1540, -3.5269,
11.2659

■ 97.2320, -28.2154,
90.1275

■ 200.0000, 0.0000,
0.0000

■ 84.3860, -31.7423,
101.3935

■ 212.8460, 3.5269,
-11.2659

■ 71.5400, -35.2692,
112.6594

■ 225.6920, 7.0538,
-22.5319

■ 237.9680, 8.3968,
-33.2979

■ 238.5550, 8.1074,
-33.8127

Harmonies

Analogous

The Analogous color harmony consists of three colors that are next to each other on the color wheel.



150.2210, -1.5880, 42.7792



148.6160, -14.1077, 45.0638



147.0310, -23.6793, 35.0528

Triad

The Triadic color harmony groups three colors that are evenly spaced from another and form a triangle on the color wheel.



148.6160, -14.1077, 45.0638



137.6960, -9.2171, -30.4284



143.0820, 29.0466, -29.8899

Complementary

The Complementary color scheme is a pair of colors which are on the opposite of each other on the color wheel.



148.6160, -14.1077, 45.0638



171.3840, 14.1077, -45.0638

Split Complementary

Split-complementary colors differ from the complementary color scheme. The scheme consists of three colors, the original color and two neighbors of the complement color.



133.7100, 29.7230, -60.2587



148.6160, -14.1077, 45.0638



132.3690, 6.7201, -55.5746

Square

The Square scheme is like the rectangle color scheme, but the four colors are evenly spaced on the color wheel.



148.6160, -14.1077, 45.0638



142.2340, -21.8074, -5.4672



127.4990, 22.9250, -73.2286



148.8580, 22.2550, 1.8785

Rectangle

The Rectangle color scheme consists of four colors that form a rectangle on the color wheel.



148.6160, -14.1077, 45.0638



145.5690, -26.4095, 24.0570



127.4990, 22.9250, -73.2286



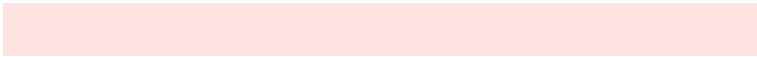
140.2440, 29.9527, -40.5560

Sweetspot

The Sweet Spot groups the original color and five complimentary colors.



148.6160, -14.1077, 45.0638



235.0300, -5.4378, 17.5137



152.1280, 19.6569, 41.9837



115.9690, -2.9427, 10.5512



0.0000, 0.0000, 0.0000



128.0000, 0.0000, 0.0000

Same Dimension

The Same Dimension uses a secret algorithm to generate beautiful new colors.



148.6160, -14.1077, 45.0638



176.5220, -21.4563, 68.8252



172.0960, -25.6833, 24.4718



92.6910, -1.3267, 5.5330



58.1290, -28.6576, 91.9719



13.1120, -6.4642, 20.0728

Inverse Universe

The Inverse Universe completely reimagines the original color for something new.



171.3840, 14.1077, -45.0638



211.4780, 21.4563, -68.8252



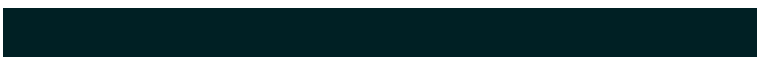
147.9040, 25.6833, -24.4718



95.7220, 1.6161, -5.0182



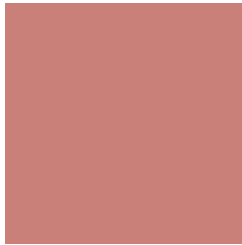
104.8710, 28.6576, -91.9719



22.8880, 6.4642, -20.0728

Previews

White Background



This preview shows how the YUV color 148.6160, -14.1077, 45.0638 looks on a white background.

Color Contrast Check

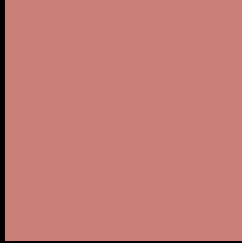
Large Text (above 18pt) WCAG AA ✓ Pass

Any Text WCAG AA × Fail

Large Text (above 18pt) WCAG AAA × Fail

Any Text WCAG AAA × Fail

Black Background



This preview shows how the YUV color 148.6160, -14.1077, 45.0638 looks on a black background.

Color Contrast Check

Large Text (above 18pt) WCAG AA ✓ Pass

Any Text WCAG AA ✓ Pass

Large Text (above 18pt) WCAG AAA ✓ Pass

Any Text WCAG AAA × Fail

If you want to check with other color combinations, try the [Color Contrast Checker](#).

YUV 148.6160, -14.1077, 45.0638

Background



This preview shows how black text looks on a background with the YUV color 148.6160, -14.1077, 45.0638.



This preview shows how white text looks on a background with the YUV color 148.6160, -14.1077,

45.0638.

Color Blindness Simulation

Color vision deficiency is a very complex topic, and I could not describe the different causes any better than Wikipedia does, so if you want to learn more, you should check out their [article about color blindness](#).

Dichromacy



Original Color

148.6160, -14.1077, 45.0638

Protanopia

147.0410, -8.8942, 6.1030

Deuteranopia

147.6470, -14.6160, 21.3576



Tritanopia

149.4510, -7.1243, 45.2085

Trichromacy



Original Color

148.6160, -14.1077, 45.0638

Protanomaly

147.6730, -10.6848, 20.4578

Deuteranomaly

147.8160, -14.2063, 29.9794

Tritanomaly

149.4680, -9.5977, 45.1936

Monochromacy



Original Color

148.6160, -14.1077, 45.0638

Achromatopsia

149.0000, 0.0000, 0.0000

Achromatomaly

148.7310, -5.2904, 16.8989

CSS Examples

Text

The CSS property to change the color of the text to YUV 148.6160, -14.1077, 45.0638 is called "color". The color property can be set on classes, ids or directly on the HTML element.

This example shows how text in the color `rgb(200, 128, 120)` looks like.

```
.text, #text, p{  
    color:rgb(200, 128, 120)  
}
```

If you want to add a text shadow in that color use the text-shadow property, you can generate a text shadow directly with our [CSS Text Shadow Generator](#).

Here you see how black text with a 4 pixel rgb(200, 128, 120) colored shadow looks like.

```
.shadow{ text-shadow: 4px 4px 2px rgb(200, 128, 120) }
```

Border

The CSS property to change the border of an element to YUV 148.6160, -14.1077, 45.0638 is called "border".

The border property can be set on classes, ids or directly on the HTML element.

This example shows the color as border, it can be applied via the CSS property "border" or "border-color".

```
.border, #border, table{ border:4px solid rgb(200, 128, 120) }
```


If only the border color should be changed use the property `border-color`.

```
.border{ border-color:rgb(200, 128, 120) }
```

If you want to add a box shadow in that color use:

Here you see how a box with a 4 pixel `rgb(200, 128, 120)` colored shadow looks like.

```
.boxshadow{ -moz-box-shadow:4px 4px 4px  
4px rgb(200, 128, 120); -webkit-box-  
shadow:4px 4px 4px 4px rgb(200, 128, 120);  
box-shadow:4px 4px 4px 4px rgb(200, 128,  
120) }
```

Background

The CSS property to change the background color of an element to YUV 148.6160, -14.1077, 45.0638 is called "background". The background property can be set on classes, ids or directly on the HTML element.

```
.background, #background, body{  
background: rgb(200, 128, 120) }
```

If only the background color should be changed can be used:

```
.background{ background-color: rgb(200,  
128, 120) }
```

This example shows the color as background, it is applied via the CSS property "background".

To optimize and compress your CSS code, you can use our [online CSS compressor and optimizer](#) based on csstidy. If you want to create a linear or radial gradient as background or border, check our [CSS Gradient Generator](#).

Hey! You found this booklet interesting? Support Converting Colors with the new Membership Option!

The pro membership hides all ads, plus gives you double the colors in the color bucket, and more awesome pro features!

[Learn more, Memberships starting at \\$2.50/m!](#)

**Follow me
on Twitter!**

@ConvertingColor