

Converting Colors

YUV(148.6160, -34.3207,
41.5558)

Have a look what the booklet for
YUV(148.6160, -34.3207, 41.5558)
contains.

YUV(148.6160, -34.3207, 41.5558)	3
<i>Conversions</i>	4
<i>Details</i>	6
<i>Harmonies</i>	12
<i>Previews</i>	24
<i>Color Blindness Simulation</i>	28
<i>CSS Examples</i>	31

Color

**YUV(148.6160, -34.3207,
41.5558)**

Conversions

Conversions Part 1

Format	Color
Hex	C48A4F
RGB	196, 138, 79
RGB Percent	77%, 54%, 31%
CMY	0.2314, 0.4588, 0.6902
CMYK	0.00, 0.30, 0.60, 0.23
HSL	30°, 50%, 54%
HSV	30°, 60%, 77%
XYZ	33.2647, 30.4772, 11.5266
YIQ	148.6160, 53.5070, -6.0530

Conversions

Conversions Part 2

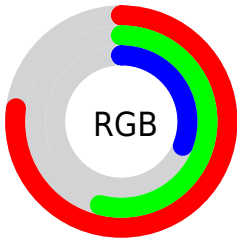
Format	Color
RYB	194, 196, 79
Decimal	12880463
CIELab	62.06, 15.88, 39.98
CIELCh	62, 43.018, 68.342
Yxy	30.4772, 0.4419, 0.4049
Android (android.graphics.Color)	4291070543 (0xFFC48A4F)
YUV	148.6160, -34.3207, 41.5558
Hunter-Lab	55.2062, 10.9451, 26.2651

Details

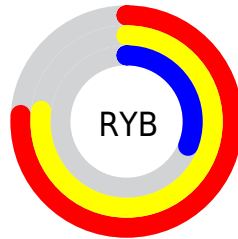
The YUV color **148.6160, -34.3207, 41.5558** is a dark color, and the websafe version is hex **CC9966**. The color can be described as middle muted orange. A complement of this color would be **126.3840, 34.3207, -41.5558**, and the grayscale version is **149.0000, 0.0000, 0.0000**.

A 20% lighter version of the original color is **203.1820, -36.0787, 45.4444**, and **96.7510, -32.4152, 37.0524** is the 20% darker color. If you saturate the color by 10%, you get **140.4660, -40.1627, 48.7033**, and if you desaturate by 10%, it is **156.7660, -28.4786, 34.4082**.

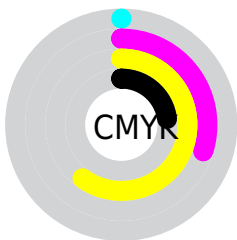
Distribution



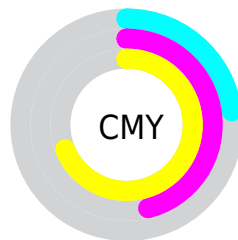
- Red (77%)
- Green (54%)
- Blue (31%)



- Red (76%)
- Yellow (77%)
- Blue (31%)



- Cyan (0%)
- Magenta (30%)
- Yellow (60%)
- Black (23%)



- Cyan (23%)
- Magenta (46%)
- Yellow (69%)

Brightness & Saturation Gradients

These gradients show how the YUV color 148.6160, -34.3207, 41.5558 changes by changing the brightness by 10 percent. The first figure shows a shift by +10% for each color and the second figure -10%.

Similar to the brightness gradients but the following saturation gradients show a change of the YUV color 148.6160, -34.3207, 41.5558 by changing the saturation by 10% instead.

■ 148.6160,
-34.3207, 41.5558

■ 148.6160,
-34.3207, 41.5558

■ 255.0000, 0.0000,
0.0000

■ 122.5340,
-33.2943, 38.9967

■ 203.1820,
-36.0787, 45.4444

■ 96.7510, -32.4152,
37.0524

■ 222.5820,
-32.8249, 28.4306

■ 71.9140, -32.9886,
34.2784

■ 242.6830,
-29.4237, 10.8020

■ 49.7700, -24.5366,
30.0197

■ 249.9840,
-19.2191, 4.3990

■ 29.3700, -14.4794,
24.2315

■ 253.2900, -6.5520,
1.4997

■ 10.1660, -5.0118,
20.9024

■ 0.0000, 0.0000,

0.0000

■ 148.6160,
-34.3207, 41.5558

■ 148.6160,
-34.3207, 41.5558

■ 140.4660,
-40.1627, 48.7033

■ 156.7660,
-28.4786, 34.4082

■ 133.0170,
-45.8574, 55.2361

■ 164.2150,
-22.7840, 27.8754

■ 124.8670,
-51.6994, 62.3836

■ 172.3650,
-16.9419, 20.7279

■ 116.8310,
-57.1047, 69.4312

■ 180.4010,
-11.5367, 13.6803

■ 116.7170,
-57.5415, 69.5312

■ 188.5510, -5.6946,
6.5328

■ 196.1140, 0.4368,
-0.1000

■ 204.1500, 5.8420,
-7.1476

■ 212.3000, 11.6841,
-14.2951

■ 219.7490, 17.3787,
-20.8279

Harmonies

Analogous

The Analogous color harmony consists of three colors that are next to each other on the color wheel.



150.2280, -22.2974, 58.5590



148.6160, -34.3207, 41.5558



145.5820, -36.2759, 15.2756

Triad

The Triadic color harmony groups three colors that are evenly spaced from another and form a triangle on the color wheel.



148.6160, -34.3207, 41.5558



118.0300, 20.6912, -103.5123



153.7050, 27.7534, 11.6597

Complementary

The Complementary color scheme is a pair of colors which are on the opposite of each other on the color wheel.



148.6160, -34.3207, 41.5558



126.3840, 34.3207, -41.5558

Split Complementary

Split-complementary colors differ from the complementary color scheme. The scheme consists of three colors, the original color and two neighbors of the complement color.



145.6930, 39.0984, -33.9338



148.6160, -34.3207, 41.5558



120.9600, 36.9947, -106.0819

Square

The Square scheme is like the rectangle color scheme, but the four colors are evenly spaced on the color wheel.



148.6160, -34.3207, 41.5558



133.0410, -5.9362, -56.1640



120.1740, 49.2142, -105.3926



154.2010, 12.2259, 45.4277

Rectangle

The Rectangle color scheme consists of four colors that form a rectangle on the color wheel.



148.6160, -34.3207, 41.5558



142.6440, -30.3905, -5.8268



120.1740, 49.2142, -105.3926



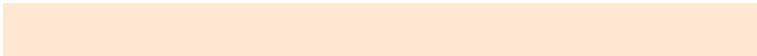
152.3550, 31.8700, -2.0653

Sweetspot

The Sweet Spot groups the original color and five complimentary colors.



148.6160, -34.3207, 41.5558



236.2550, -13.4367, 16.4394



120.7090, 8.5245, 66.0302



116.4760, -8.6157, 10.1065



0.0000, 0.0000, 0.0000



128.0000, 0.0000, 0.0000

Same Dimension

The Same Dimension uses a secret algorithm to generate beautiful new colors.



148.6160, -34.3207, 41.5558



180.6070, -54.0363, 65.2427



182.6620, -51.1054, 11.6974



92.9250, -2.9210, 3.5738



95.6860, -47.1732, 57.2804



19.8460, -9.7841, 11.5361

Inverse Universe

The Inverse Universe completely reimagines the original color for something new.



126.3840, 34.3207, -41.5558



145.3930, 54.0363, -65.2427



92.3380, 51.1054, -11.6974



91.0750, 2.9210, -3.5738



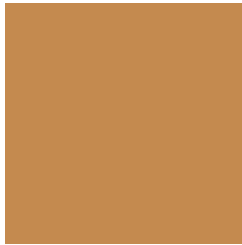
65.3140, 47.1732, -57.2804



13.1540, 9.7841, -11.5361

Previews

White Background



This preview shows how the YUV color 148.6160, -34.3207, 41.5558 looks on a white background.

Color Contrast Check

Large Text (above 18pt) WCAG AA × Fail

Any Text WCAG AA × Fail

Large Text (above 18pt) WCAG AAA × Fail

Any Text WCAG AAA × Fail

Black Background



This preview shows how the YUV color 148.6160, -34.3207, 41.5558 looks on a black background.

Color Contrast Check

Large Text (above 18pt) WCAG AA ✓ Pass

Any Text WCAG AA ✓ Pass

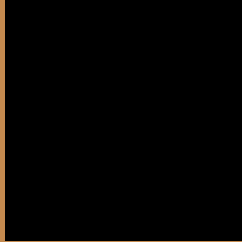
Large Text (above 18pt) WCAG AAA ✓ Pass

Any Text WCAG AAA ✓ Pass

If you want to check with other color combinations, try the [Color Contrast Checker](#).

YUV 148.6160, -34.3207, 41.5558

Background



This preview shows how black text looks on a background with the YUV color 148.6160, -34.3207, 41.5558.



This preview shows how white text looks on a background with the YUV color 148.6160, -34.3207, 41.5558.

Color Blindness Simulation

Color vision deficiency is a very complex topic, and I could not describe the different causes any better than Wikipedia does, so if you want to learn more, you should check out their [article about color blindness](#).

Dichromacy



Original Color

148.6160, -34.3207, 41.5558

Protanopia

146.8470, -31.4766, 15.9202

Deuteranopia

148.1480, -34.5830, 32.3192



Tritanopia

153.0700, -5.9505, 42.0346

Trichromacy



Original Color

148.6160, -34.3207, 41.5558

Protanomaly

147.6740, -32.3773, 24.8419

Deuteranomaly

148.1700, -34.5938, 35.8079

Tritanomaly

151.6110, -16.5702, 41.5602

Monochromacy



Original Color

148.6160, -34.3207, 41.5558

Achromatopsia

149.0000, 0.0000, 0.0000

Achromatomaly

148.8850, -12.2683, 15.0099

CSS Examples

Text

The CSS property to change the color of the text to YUV 148.6160, -34.3207, 41.5558 is called "color". The color property can be set on classes, ids or directly on the HTML element.

This example shows how text in the color `rgb(196, 138, 79)` looks like.

```
.text, #text, p{  
    color:rgb(196, 138, 79)  
}
```

If you want to add a text shadow in that color use the text-shadow property, you can generate a text shadow directly with our [CSS Text Shadow Generator](#).

Here you see how black text with a 4 pixel rgb(196, 138, 79) colored shadow looks like.

```
.shadow{ text-shadow: 4px 4px 2px rgb(196, 138, 79) }
```

Border

The CSS property to change the border of an element to YUV 148.6160, -34.3207, 41.5558 is called "border".

The border property can be set on classes, ids or directly on the HTML element.

This example shows the color as border, it can be applied via the CSS property "border" or "border-color".

```
.border, #border, table{ border:4px solid rgb(196, 138, 79) }
```


If only the border color should be changed use the property border-color.

```
.border{ border-color:rgb(196, 138, 79) }
```

If you want to add a box shadow in that color use:

Here you see how a box with a 4 pixel rgb(196, 138, 79) colored shadow looks like.

```
.boxshadow{ -moz-box-shadow:4px 4px 4px  
4px rgb(196, 138, 79); -webkit-box-  
shadow:4px 4px 4px 4px rgb(196, 138, 79);  
box-shadow:4px 4px 4px 4px rgb(196, 138,  
79) }
```

Background

The CSS property to change the background color of an element to YUV 148.6160, -34.3207, 41.5558 is called "background". The background property can be set on classes, ids or directly on the HTML element.

```
.background, #background, body{  
background: rgb(196, 138, 79) }
```

If only the background color should be changed can be used:

```
.background{ background-color: rgb(196,  
138, 79) }
```

This example shows the color as background, it is applied via the CSS property "background".

To optimize and compress your CSS code, you can use our [online CSS compressor and optimizer](#) based on csstidy. If you want to create a linear or radial gradient as background or border, check our [CSS Gradient Generator](#).

Hey! You found this booklet interesting? Support Converting Colors with the new Membership Option!

The pro membership hides all ads, plus gives you double the colors in the color bucket, and more awesome pro features!

[Learn more, Memberships starting at \\$2.50/m!](#)

**Follow me
on Twitter!**

@ConvertingColor