

Converting Colors

YUV(148.9450, -12.7909,
89.5022)

Have a look what the booklet for
YUV(148.9450, -12.7909, 89.5022)
contains.

YUV(148.9450, -12.7909, 89.5022)	3
<i>Conversions</i>	4
<i>Details</i>	6
<i>Harmonies</i>	12
<i>Previews</i>	24
<i>Color Blindness Simulation</i>	28
<i>CSS Examples</i>	31

Color

**YUV(148.9450, -12.7909,
89.5022)**

Conversions

Conversions Part 1

Format	Color
Hex	FB667B
RGB	251, 102, 123
RGB Percent	98%, 40%, 48%
CMY	0.0157, 0.6000, 0.5176
CMYK	0.00, 0.59, 0.51, 0.02
HSL	352°, 95%, 69%
HSV	352°, 59%, 98%
XYZ	48.1102, 31.4420, 22.2721
YIQ	148.9450, 82.0630, 38.1190

Conversions

Conversions Part 2

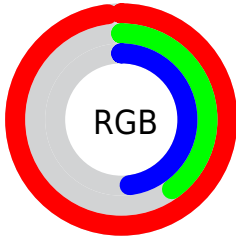
Format	Color
R_{YB}	251, 102, 123
Decimal	16475771
CIE _{Lab}	62.88, 58.48, 18.16
CIE _{LCh}	63, 61.235, 17.249
Yxy	31.4420, 0.4725, 0.3088
Android (android.graphics.Color)	4294665851 (0xFFFB667B)
YUV	148.9450, -12.7909, 89.5022
Hunter-Lab	56.0732, 55.0229, 15.7014

Details

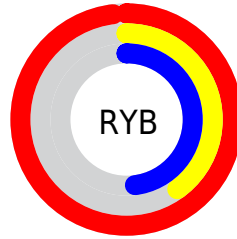
The YUV color **148.9450, -12.7909, 89.5022** is a light color, and the websafe version is hex **FF6666**. A complement of this color would be **204.0550, 12.7909, -89.5022**, and the grayscale version is **149.0000, 0.0000, 0.0000**.

A 20% lighter version of the original color is **188.9410, -6.8729, 57.9337**, and **90.3020, -7.5439, 86.5581** is the 20% darker color. If you saturate the color by 10%, you get **131.7620, -15.1657, 104.5717**, and if you desaturate by 10%, it is **166.1280, -10.4161, 74.4327**.

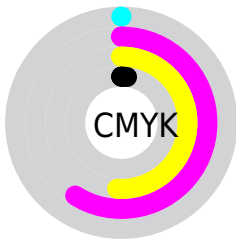
Distribution



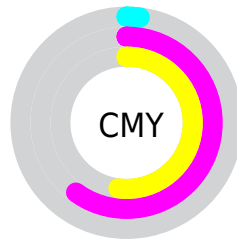
- Red (98%)
- Green (40%)
- Blue (48%)



- Red (98%)
- Yellow (40%)
- Blue (48%)



- Cyan (0%)
- Magenta (59%)
- Yellow (51%)
- Black (2%)



- Cyan (2%)
- Magenta (60%)
- Yellow (52%)

Brightness & Saturation Gradients

These gradients show how the YUV color 148.9450, -12.7909, 89.5022 changes by changing the brightness by 10 percent. The first figure shows a shift by +10% for each color and the second figure -10%.

Similar to the brightness gradients but the following saturation gradients show a change of the YUV color 148.9450, -12.7909, 89.5022 by changing the saturation by 10% instead.

■ 148.9450,
-12.7909, 89.5022

■ 148.9450,
-12.7909, 89.5022

■ 255.0000, 0.0000,
0.0000

■ 120.3900,
-11.0383, 87.3580

■ 188.9410, -6.8729,
57.9337

■ 90.3020, -7.5439,
86.5581

■ 209.1560, -3.0349,
40.2052

■ 53.4690, -0.7242,
92.5507

■ 229.3710, 0.8031,
22.4766

■ 42.1050, -5.4748,
76.2069

■ 249.1300, 2.8939,
5.1480

■ 30.5130, -11.0989,
60.0631

■ 21.4570, -9.5923,
43.4492

■ 12.3730, -5.6069,

25.1059

■ 0.0000, 0.0000,
0.0000

■ 148.9450,
-12.7909, 89.5022

■ 148.9450,
-12.7909, 89.5022

■ 131.7620,
-15.1657, 104.5717

■ 166.1280,
-10.4161, 74.4327

■ 114.6930,
-17.1036, 119.5412

■ 183.1970, -8.4781,
59.4632

■ 97.5100, -19.4784,
134.6107

■ 200.3800, -6.1033,
44.3937

■ 80.4410, -21.4164,
149.5802

■ 217.4490, -4.1654,
29.4242

■ 79.0390, -21.7112,
150.8098

■ 235.2190, -2.0800,
13.8399

252.2880, -0.1420,
-1.1296

253.8040, 0.5896,
-2.4591

Harmonies

Analogous

The Analogous color harmony consists of three colors that are next to each other on the color wheel.



152.8010, 12.4231, 75.5965



148.9450, -12.7909, 89.5022



148.5540, -36.7551, 75.8131

Triad

The Triadic color harmony groups three colors that are evenly spaced from another and form a triangle on the color wheel.



148.9450, -12.7909, 89.5022



134.5270, -29.8398, -42.5582



125.9250, 63.6340, -110.4362

Complementary

The Complementary color scheme is a pair of colors which are on the opposite of each other on the color wheel.



148.9450, -12.7909, 89.5022



204.0550, 12.7909, -89.5022

Split Complementary

Split-complementary colors differ from the complementary color scheme. The scheme consists of three colors, the original color and two neighbors of the complement color.



129.0590, 50.2569, -113.1847



148.9450, -12.7909, 89.5022



118.2630, 3.8143, -103.7167

Square

The Square scheme is like the rectangle color scheme, but the four colors are evenly spaced on the color wheel.



148.9450, -12.7909, 89.5022



142.1730, -52.8363, 6.8643



125.3480, 28.4224, -109.9302



147.6510, 52.9231, -34.7739

Rectangle

The Rectangle color scheme consists of four colors that form a rectangle on the color wheel.



148.9450, -12.7909, 89.5022



147.7030, -49.6466, 57.2655



125.3480, 28.4224, -109.9302



127.9310, 61.1660, -112.1955

Sweetspot

The Sweet Spot groups the original color and five complimentary colors.



148.9450, -12.7909, 89.5022



223.5520, -3.7231, 27.5799



156.9590, 46.3622, 63.1800



108.1270, -2.5276, 17.4286



0.0000, 0.0000, 0.0000



128.0000, 0.0000, 0.0000

Same Dimension

The Same Dimension uses a secret algorithm to generate beautiful new colors.



148.9450, -12.7909, 89.5022



130.9690, -15.7607, 108.7752



177.0750, -37.0120, 64.8322



116.1150, -1.0427, 7.7921



59.5890, -16.0664, 113.4934



19.2650, -5.0606, 36.6016

Inverse Universe

The Inverse Universe completely reimagines the original color for something new.



148.9450, -12.7909, 89.5022



130.9690, -15.7607, 108.7752



175.9250, 37.0120, -64.8322



116.1150, -1.0427, 7.7921



59.5890, -16.0664, 113.4934



19.2650, -5.0606, 36.6016

Previews

White Background



This preview shows how the YUV color 148.9450, -12.7909, 89.5022 looks on a white background.

Color Contrast Check

Large Text (above 18pt) WCAG AA × Fail

Any Text WCAG AA × Fail

Large Text (above 18pt) WCAG AAA × Fail

Any Text WCAG AAA × Fail

Black Background



This preview shows how the YUV color 148.9450, -12.7909, 89.5022 looks on a black background.

Color Contrast Check

Large Text (above 18pt) WCAG AA ✓ Pass

Any Text WCAG AA ✓ Pass

Large Text (above 18pt) WCAG AAA ✓ Pass

Any Text WCAG AAA ✓ Pass

If you want to check with other color combinations, try the [Color Contrast Checker](#).

YUV 148.9450, -12.7909, 89.5022

Background



This preview shows how black text looks on a background with the YUV color 148.9450, -12.7909, 89.5022.



This preview shows how white text looks on a background with the YUV color 148.9450, -12.7909, 89.5022.

Color Blindness Simulation

Color vision deficiency is a very complex topic, and I could not describe the different causes any better than Wikipedia does, so if you want to learn more, you should check out their [article about color blindness](#).

Dichromacy



Original Color

148.9450, -12.7909, 89.5022

Protanopia

152.7400, -2.3368, 2.8590

Deuteranopia

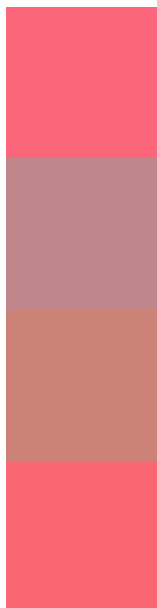
152.4470, -17.9684, 23.2870



Tritanopia

148.4520, -18.4638, 89.0576

Trichromacy



Original Color

148.9450, -12.7909, 89.5022

Protanomaly

151.6130, -6.2182, 34.5424

Deuteranomaly

151.1710, -15.8603, 47.2080

Tritanomaly

148.3210, -16.4273, 89.1725

Monochromacy



Original Color

148.9450, -12.7909, 89.5022

Achromatopsia

149.0000, 0.0000, 0.0000

Achromatomaly

149.0580, -4.4656, 32.3981

CSS Examples

Text

The CSS property to change the color of the text to YUV 148.9450, -12.7909, 89.5022 is called "color". The color property can be set on classes, ids or directly on the HTML element.

This example shows how text in the color `rgb(251, 102, 123)` looks like.

```
.text, #text, p{  
    color:rgb(251, 102, 123)  
}
```

If you want to add a text shadow in that color use the text-shadow property, you can generate a text shadow directly with our [CSS Text Shadow Generator](#).

Here you see how black text with a 4 pixel rgb(251, 102, 123) colored shadow looks like.

```
.shadow{ text-shadow: 4px 4px 2px rgb(251, 102, 123) }
```

Border

The CSS property to change the border of an element to YUV 148.9450, -12.7909, 89.5022 is called "border".

The border property can be set on classes, ids or directly on the HTML element.

This example shows the color as border, it can be applied via the CSS property "border" or "border-color".

```
.border, #border, table{ border:4px solid rgb(251, 102, 123) }
```


If only the border color should be changed use the property `border-color`.

```
.border{ border-color:rgb(251, 102, 123) }
```

If you want to add a box shadow in that color use:

Here you see how a box with a 4 pixel `rgb(251, 102, 123)` colored shadow looks like.

```
.boxshadow{ -moz-box-shadow:4px 4px 4px  
4px rgb(251, 102, 123); -webkit-box-  
shadow:4px 4px 4px 4px rgb(251, 102, 123);  
box-shadow:4px 4px 4px 4px rgb(251, 102,  
123) }
```

Background

The CSS property to change the background color of an element to YUV 148.9450, -12.7909, 89.5022 is called "background". The background property can be set on classes, ids or directly on the HTML element.

```
.background, #background, body{  
background: rgb(251, 102, 123) }
```

If only the background color should be changed can be used:

```
.background{ background-color: rgb(251,  
102, 123) }
```

This example shows the color as background, it is applied via the CSS property "background".

To optimize and compress your CSS code, you can use our [online CSS compressor and optimizer](#) based on csstidy. If you want to create a linear or radial gradient as background or border, check our [CSS Gradient Generator](#).

Hey! You found this booklet interesting? Support Converting Colors with the new Membership Option!

The pro membership hides all ads, plus gives you double the colors in the color bucket, and more awesome pro features!

[Learn more, Memberships starting at \\$2.50/m!](#)

**Follow me
on Twitter!**

@ConvertingColor