

Converting Colors

YUV(149.0020, -16.2700,
38.5862)

Have a look what the booklet for
YUV(149.0020, -16.2700, 38.5862)
contains.

YUV(149.0020, -16.2700, 38.5862)	3
<i>Conversions</i>	4
<i>Details</i>	6
<i>Harmonies</i>	12
<i>Previews</i>	24
<i>Color Blindness Simulation</i>	28
<i>CSS Examples</i>	31

Color

**YUV(149.0020, -16.2700,
38.5862)**

Conversions

Conversions Part 1

Format	Color
Hex	C18574
RGB	193, 133, 116
RGB Percent	76%, 52%, 45%
CMY	0.2431, 0.4784, 0.5451
CMYK	0.00, 0.31, 0.40, 0.24
HSL	13°, 38%, 61%
HSV	13°, 40%, 76%
XYZ	33.5322, 29.3735, 20.4253
YIQ	149.0020, 41.2170, 7.4330

Conversions

Conversions Part 2

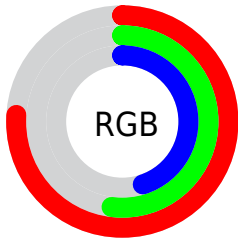
Format	Color
R_{YB}	193, 138, 116
Decimal	12682612
CIE Lab	61.11, 20.93, 18.46
CIE LCh	61, 27.907, 41.408
Yxy	29.3735, 0.4024, 0.3525
Android (android.graphics.Color)	4290872692 (0xFFC18574)
YUV	149.0020, -16.2700, 38.5862
Hunter-Lab	54.1973, 15.5939, 15.5935

Details

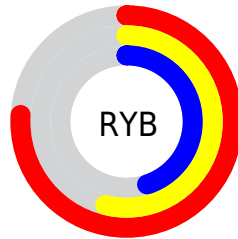
The YUV color $149.0020, -16.2700, 38.5862$ is a light color, and the websafe version is hex $CC9999$. A complement of this color would be $159.9980, 16.2700, -38.5862$, and the grayscale version is $149.0000, 0.0000, 0.0000$.

A 20% lighter version of the original color is $203.3830, -17.4438, 41.7601$, and $97.4360, -14.5119, 34.6976$ is the 20% darker color. If you saturate the color by 10%, you get $138.0310, -20.2283, 48.2078$, and if you desaturate by 10%, it is $159.9730, -12.3117, 28.9647$.

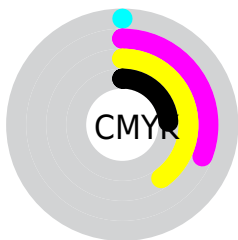
Distribution



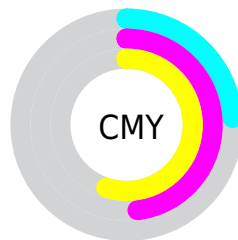
- Red (76%)
- Green (52%)
- Blue (45%)



- Red (76%)
- Yellow (54%)
- Blue (45%)



- Cyan (0%)
- Magenta (31%)
- Yellow (40%)
- Black (24%)



- Cyan (24%)
- Magenta (48%)
- Yellow (55%)

Brightness & Saturation Gradients

These gradients show how the YUV color 149.0020, -16.2700, 38.5862 changes by changing the brightness by 10 percent. The first figure shows a shift by +10% for each color and the second figure -10%.

Similar to the brightness gradients but the following saturation gradients show a change of the YUV color 149.0020, -16.2700, 38.5862 by changing the saturation by 10% instead.

■ 149.0020,
-16.2700, 38.5862

■ 149.0020,
-16.2700, 38.5862

255.0000, 0.0000,
0.0000

■ 123.1050,
-15.8278, 36.7419

■ 203.3830,
-17.4438, 41.7601

■ 97.4360, -14.5119,
34.6976

■ 224.0930,
-14.3428, 27.1054

■ 72.6530, -13.6329,
32.7533

■ 244.3080,
-10.5048, 9.3769

■ 49.5710, -12.6065,
30.1942

254.6580, -1.3104,
0.2999

■ 26.7450, -13.1853,
29.1646

■ 11.0630, -5.4541,
22.7467

■ 0.0000, 0.0000,

0.0000

■ 149.0020,
-16.2700, 38.5862

■ 149.0020,
-16.2700, 38.5862

■ 138.0310,
-20.2283, 48.2078

■ 159.9730,
-12.3117, 28.9647

■ 126.9460,
-24.6234, 57.9294

■ 171.0580, -7.9166,
19.2431

■ 115.9750,
-28.5817, 67.5509

■ 182.0290, -3.9583,
9.6216

■ 105.0040,
-32.5400, 77.1725

■ 193.0000, 0.0000,
0.0000

■ 94.0330, -36.4983,
86.7941

■ 203.9710, 3.9583,
-9.6216

■ 82.9480, -40.8934,
96.5156

■ 215.0560, 8.3534,
-19.3431

■ 226.0270, 12.3117,
-28.9647

■ 235.2880, 9.7180,
-37.0866

■ 236.4620, 9.1392,
-38.1162

Harmonies

Analogous

The Analogous color harmony consists of three colors that are next to each other on the color wheel.



150.1730, -5.5083, 40.1903



149.0020, -16.2700, 38.5862



147.5030, -22.9260, 26.7459

Triad

The Triadic color harmony groups three colors that are evenly spaced from another and form a triangle on the color wheel.



149.0020, -16.2700, 38.5862



138.4550, -3.6753, -34.6020



147.2040, 24.0564, -15.9649

Complementary

The Complementary color scheme is a pair of colors which are on the opposite of each other on the color wheel.



149.0020, -16.2700, 38.5862



159.9980, 16.2700, -38.5862

Split Complementary

Split-complementary colors differ from the complementary color scheme. The scheme consists of three colors, the original color and two neighbors of the complement color.



140.0220, 26.6112, -42.1153



149.0020, -16.2700, 38.5862



134.1180, 10.7878, -53.6005

Square

The Square scheme is like the rectangle color scheme, but the four colors are evenly spaced on the color wheel.



149.0020, -16.2700, 38.5862



142.3840, -15.9653, -12.6148



134.0710, 22.1500, -57.9443



150.8330, 16.8443, 10.6705

Rectangle

The Rectangle color scheme consists of four colors that form a rectangle on the color wheel.



149.0020, -16.2700, 38.5862



145.9100, -23.6196, 15.8649



134.0710, 22.1500, -57.9443



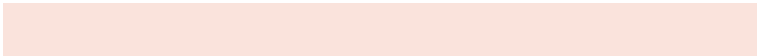
144.7900, 25.2465, -24.3718

Sweetspot

The Sweet Spot groups the original color and five complimentary colors.



149.0020, -16.2700, 38.5862



233.0790, -6.4479, 14.8397



145.8630, 14.8575, 41.3391



114.7300, -3.8109, 9.0068



252.0000, 0.0000, 0.0000



125.0000, 0.0000, 0.0000

Same Dimension

The Same Dimension uses a secret algorithm to generate beautiful new colors.



149.0020, -16.2700, 38.5862



181.1420, -25.2130, 60.3885



171.3080, -27.2668, 19.0239



91.1640, -2.0529, 5.1182



68.6840, -33.8612, 80.9611



13.9760, -6.8902, 16.6840

Inverse Universe

The Inverse Universe completely reimagines the original color for something new.



159.9980, 16.2700, -38.5862



198.2710, 25.5024, -59.8737



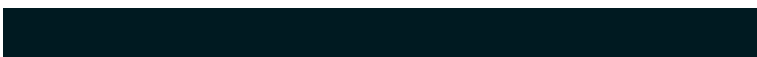
137.6920, 27.2668, -19.0239



92.8360, 2.0529, -5.1182



91.7290, 34.1506, -80.4463



19.0240, 6.8902, -16.6840

Previews

White Background



This preview shows how the YUV color 149.0020, -16.2700, 38.5862 looks on a white background.

Color Contrast Check

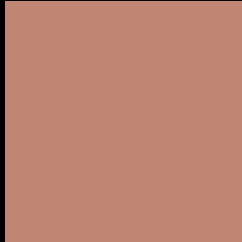
Large Text (above 18pt) WCAG AA ✓ Pass

Any Text WCAG AA × Fail

Large Text (above 18pt) WCAG AAA × Fail

Any Text WCAG AAA × Fail

Black Background



This preview shows how the YUV color 149.0020, -16.2700, 38.5862 looks on a black background.

Color Contrast Check

Large Text (above 18pt) WCAG AA ✓ Pass

Any Text WCAG AA ✓ Pass

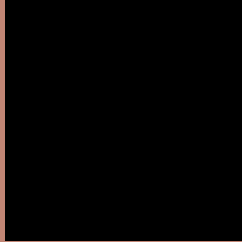
Large Text (above 18pt) WCAG AAA ✓ Pass

Any Text WCAG AAA × Fail

If you want to check with other color combinations, try the [Color Contrast Checker](#).

YUV 149.0020, -16.2700, 38.5862

Background



This preview shows how black text looks on a background with the YUV color 149.0020, -16.2700, 38.5862.



This preview shows how white text looks on a background with the YUV color 149.0020, -16.2700,

Color Blindness Simulation

Color vision deficiency is a very complex topic, and I could not describe the different causes any better than Wikipedia does, so if you want to learn more, you should check out their [article about color blindness](#).

Dichromacy



Original Color

149.0020, -16.2700, 38.5862

Protanopia

147.5420, -12.0992, 7.4177

Deuteranopia

148.0770, -16.8000, 21.8575



Tritanopia

150.4610, -5.6503, 39.0607

Trichromacy



Original Color

149.0020, -16.2700, 38.5862

Protanomaly

148.1520, -13.8789, 18.2837

Deuteranomaly

148.5230, -16.5268, 27.6053

Tritanomaly

149.8370, -9.2866, 38.7310

Monochromacy



Original Color

149.0020, -16.2700, 38.5862

Achromatopsia

149.0000, 0.0000, 0.0000

Achromatomaly

148.8940, -5.8637, 14.1250

CSS Examples

Text

The CSS property to change the color of the text to YUV 149.0020, -16.2700, 38.5862 is called "color". The color property can be set on classes, ids or directly on the HTML element.

This example shows how text in the color `rgb(193, 133, 116)` looks like.

```
.text, #text, p{  
    color:rgb(193, 133, 116)  
}
```

If you want to add a text shadow in that color use the text-shadow property, you can generate a text shadow directly with our [CSS Text Shadow Generator](#).

Here you see how black text with a 4 pixel rgb(193, 133, 116) colored shadow looks like.

```
.shadow{ text-shadow: 4px 4px 2px rgb(193, 133, 116) }
```

Border

The CSS property to change the border of an element to YUV 149.0020, -16.2700, 38.5862 is called "border".

The border property can be set on classes, ids or directly on the HTML element.

This example shows the color as border, it can be applied via the CSS property "border" or "border-color".

```
.border, #border, table{ border:4px solid rgb(193, 133, 116) }
```


If only the border color should be changed use the property `border-color`.

```
.border{ border-color:rgb(193, 133, 116) }
```

If you want to add a box shadow in that color use:

Here you see how a box with a 4 pixel `rgb(193, 133, 116)` colored shadow looks like.

```
.boxshadow{ -moz-box-shadow:4px 4px 4px  
4px rgb(193, 133, 116); -webkit-box-  
shadow:4px 4px 4px 4px rgb(193, 133, 116);  
box-shadow:4px 4px 4px 4px rgb(193, 133,  
116) }
```

Background

The CSS property to change the background color of an element to YUV 149.0020, -16.2700, 38.5862 is called "background". The background property can be set on classes, ids or directly on the HTML element.

```
.background, #background, body{  
background: rgb(193, 133, 116) }
```

If only the background color should be changed can be used:

```
.background{ background-color: rgb(193,  
133, 116) }
```

This example shows the color as background, it is applied via the CSS property "background".

To optimize and compress your CSS code, you can use our [online CSS compressor and optimizer](#) based on csstidy. If you want to create a linear or radial gradient as background or border, check our [CSS Gradient Generator](#).

Hey! You found this booklet interesting? Support Converting Colors with the new Membership Option!

The pro membership hides all ads, plus gives you double the colors in the color bucket, and more awesome pro features!

[Learn more, Memberships starting at \\$2.50/m!](#)

**Follow me
on Twitter!**

@ConvertingColor