

# Converting Colors

YUV(149.0410, -22.2052,  
28.9050)

Have a look what the booklet for  
YUV(149.0410, -22.2052, 28.9050)  
contains.

<b>YUV(149.0410, -22.2052, 28.9050)</b> .....	3
<b><i>Conversions</i></b> .....	4
<b><i>Details</i></b> .....	6
<b><i>Harmonies</i></b> .....	12
<b><i>Previews</i></b> .....	24
<b><i>Color Blindness Simulation</i></b> .....	28
<b><i>CSS Examples</i></b> .....	31

# Color

**YUV(149.0410, -22.2052,  
28.9050)**

# Conversions

## Conversions Part 1

Format	Color
Hex	B68D68
RGB	182, 141, 104
RGB Percent	71%, 55%, 41%
CMY	0.2863, 0.4471, 0.5922
CMYK	0.00, 0.23, 0.43, 0.29
HSL	28°, 35%, 56%
HSV	28°, 43%, 71%
XYZ	31.3150, 29.9943, 17.2357
YIQ	149.0410, 36.3130, -2.8150

# Conversions

## Conversions Part 2

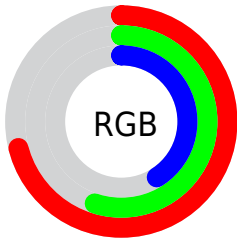
<b>Format</b>	<b>Color</b>
<b>R<sub>YB</sub></b>	182, 174, 104
Decimal	11963752
CIE <sub>Lab</sub>	61.65, 10.64, 25.69
CIE <sub>LCh</sub>	62, 27.805, 67.501
Yxy	29.9943, 0.3987, 0.3819
Android (android.graphics.Color)	4290153832 (0xFFB68D68)
YUV	149.0410, -22.2052, 28.9050
Hunter-Lab	54.7671, 6.2212, 19.6778

# Details

The YUV color **149.0410, -22.2052, 28.9050** is a dark color, and the websafe version is hex **CC9966**. A complement of this color would be **136.9590, 22.2052, -28.9050**, and the grayscale version is **149.0000, 0.0000, 0.0000**.

A 20% lighter version of the original color is **203.7100, -23.5210, 30.9493**, and **97.7740, -20.5946, 25.6312** is the 20% darker color. If you saturate the color by 10%, you get **141.1190, -27.1737, 35.8526**, and if you desaturate by 10%, it is **156.9630, -17.2368, 21.9574**.

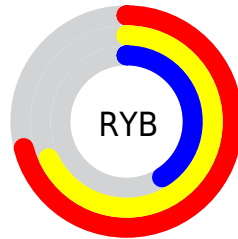
# Distribution



Red (71%)

Green (55%)

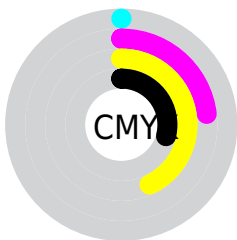
Blue (41%)



Red (71%)

Yellow (68%)

Blue (41%)

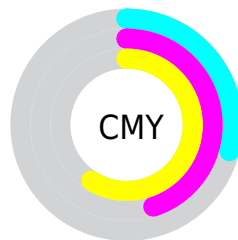


Cyan (0%)

Magenta (23%)

Yellow (43%)

Black (29%)



Cyan (29%)

Magenta (45%)

Yellow (59%)

# Brightness & Saturation Gradients

These gradients show how the YUV color 149.0410, -22.2052, 28.9050 changes by changing the brightness by 10 percent. The first figure shows a shift by +10% for each color and the second figure -10%.

Similar to the brightness gradients but the following saturation gradients show a change of the YUV color 149.0410, -22.2052, 28.9050 by changing the saturation by 10% instead.



■ 149.0410,  
-22.2052, 28.9050

■ 149.0410,  
-22.2052, 28.9050

255.0000, 0.0000,  
0.0000

■ 122.6710,  
-21.0368, 27.4755

■ 203.7100,  
-23.5210, 30.9493

■ 97.7740, -20.5946,  
25.6312

■ 227.8940,  
-22.6257, 23.7720

■ 73.4040, -19.4262,  
24.2017

■ 247.5220,  
-18.4983, 6.5582

■ 50.2080, -18.8365,  
21.7426

■ 253.1760, -6.9888,  
1.5996

■ 29.3370, -14.4631,  
18.9985

■ 8.0730, -3.9800,  
16.5990

■ 0.0000, 0.0000,

0.0000

■ 149.0410,  
-22.2052, 28.9050

■ 149.0410,  
-22.2052, 28.9050

■ 141.1190,  
-27.1737, 35.8526

■ 156.9630,  
-17.2368, 21.9574

■ 133.7840,  
-32.4315, 42.2854

■ 164.2980,  
-11.9789, 15.5247

■ 125.7480,  
-37.8368, 49.3330

■ 172.3340, -6.5737,  
8.4771

■ 118.4130,  
-43.0946, 55.7658

■ 179.6690, -1.3158,  
2.0443

■ 110.4910,  
-48.0631, 62.7134

■ 187.5910, 3.6526,  
-4.9033

■ 104.9000,  
-51.7157, 67.6167

■ 194.9260, 8.9105,  
-11.3361

■ 202.8480, 13.8789,  
-18.2837

■ 210.8840, 19.2842,  
-25.3313

■ 216.7370, 18.8637,  
-30.4643

# Harmonies

## Analogous

The Analogous color harmony consists of three colors that are next to each other on the color wheel.



150.9420, -15.2544, 39.5159



149.0410, -22.2052, 28.9050



146.7030, -23.0246, 11.6615

# Triad

The Triadic color harmony groups three colors that are evenly spaced from another and form a triangle on the color wheel.



149.0410, -22.2052, 28.9050



136.5590, 8.5984, -51.3562



151.4520, 18.0182, 7.4966

# Complementary

The Complementary color scheme is a pair of colors which are on the opposite of each other on the color wheel.



149.0410, -22.2052, 28.9050



136.9590, 22.2052, -28.9050

# Split Complementary

Split-complementary colors differ from the complementary color scheme. The scheme consists of three colors, the original color and two neighbors of the complement color.



147.5950, 24.3567, -18.9388



149.0410, -22.2052, 28.9050



135.4300, 20.9870, -58.2591

# Square

The Square scheme is like the rectangle color scheme, but the four colors are evenly spaced on the color wheel.



149.0410, -22.2052, 28.9050



140.3090, -5.5753, -31.8430



141.1850, 26.0378, -44.8892



152.5380, 7.6228, 28.4692



# Rectangle

The Rectangle color scheme consists of four colors that form a rectangle on the color wheel.



149.0410, -22.2052, 28.9050



144.8260, -19.6342, -2.4784



141.1850, 26.0378, -44.8892



150.6790, 20.3713, -0.5955

# Sweetspot

The Sweet Spot groups the original color and five complimentary colors.



149.0410, -22.2052, 28.9050



224.0740, -8.9105, 11.3361



132.1100, 6.8478, 43.7535



111.9640, -5.4053, 7.0476



247.0000, 0.0000, 0.0000



120.0000, 0.0000, 0.0000



# Same Dimension

The Same Dimension uses a secret algorithm to generate beautiful new colors.



149.0410, -22.2052, 28.9050



186.2250, -34.6209, 44.5297



171.3470, -33.2021, 9.3427



88.0390, -2.4842, 3.4738



90.0820, -44.4104, 57.8101



16.0030, -7.8895, 10.5214



# Inverse Universe

The Inverse Universe completely reimagines the original color for something new.



136.9590, 22.2052, -28.9050



167.3620, 34.3315, -45.0445



114.6530, 33.2021, -9.3427



86.3740, 2.7736, -2.9590



65.9180, 44.4104, -57.8101

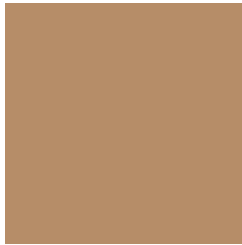


11.9970, 7.8895, -10.5214



# Previews

## White Background



This preview shows how the YUV color 149.0410, -22.2052, 28.9050 looks on a white background.

## Color Contrast Check

Large Text (above 18pt) WCAG AA ✓ Pass

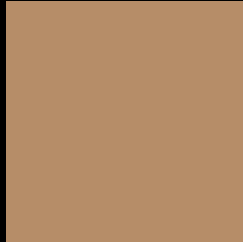
Any Text WCAG AA × Fail

Large Text (above 18pt) WCAG AAA × Fail

Any Text WCAG AAA × Fail



# Black Background



This preview shows how the YUV color 149.0410, -22.2052, 28.9050 looks on a black background.

## Color Contrast Check

Large Text (above 18pt) WCAG AA ✓ Pass

Any Text WCAG AA ✓ Pass

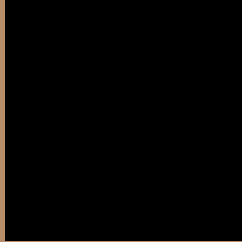
Large Text (above 18pt) WCAG AAA ✓ Pass

Any Text WCAG AAA ✓ Pass

If you want to check with other color combinations, try the [Color Contrast Checker](#).

# YUV 149.0410, -22.2052, 28.9050

## Background



This preview shows how black text looks on a background with the YUV color 149.0410, -22.2052, 28.9050.



This preview shows how white text looks on a background with the YUV color 149.0410, -22.2052, 28.9050.



# Color Blindness Simulation

Color vision deficiency is a very complex topic, and I could not describe the different causes any better than Wikipedia does, so if you want to learn more, you should check out their [article about color blindness](#).

## Dichromacy



### Original Color

149.0410, -22.2052, 28.9050

### Protanopia

147.8000, -20.1144, 11.5764

### Deuteranopia

149.0190, -22.1944, 25.4163



## Tritanopia

151.5030, -2.7130, 30.2539

# Trichromacy



## Original Color

149.0410, -22.2052, 28.9050

## Protanomaly

148.3170, -20.8623, 18.1390

## Deuteranomaly

148.7310, -22.0524, 26.5459

## Tritanomaly

150.6680, -9.6963, 30.1092

# Monochromacy



## Original Color

149.0410, -22.2052, 28.9050

## Achromatopsia

149.0000, 0.0000, 0.0000

## Achromatomaly

149.0030, -7.8895, 10.5214

# CSS Examples

## Text

The CSS property to change the color of the text to YUV 149.0410, -22.2052, 28.9050 is called "color". The color property can be set on classes, ids or directly on the HTML element.

This example shows how text in the color `rgb(182, 141, 104)` looks like.

```
.text, #text, p{  
    color:rgb(182, 141, 104)  
}
```

If you want to add a text shadow in that color use the text-shadow property, you can generate a text shadow directly with our [CSS Text Shadow Generator](#).

Here you see how black text with a 4 pixel rgb(182, 141, 104) colored shadow looks like.

```
.shadow{ text-shadow: 4px 4px 2px rgb(182, 141, 104) }
```

## Border

The CSS property to change the border of an element to YUV 149.0410, -22.2052, 28.9050 is called "border".

The border property can be set on classes, ids or directly on the HTML element.

This example shows the color as border, it can be applied via the CSS property "border" or "border-color".

```
.border, #border, table{ border:4px solid rgb(182, 141, 104) }
```



If only the border color should be changed use the property `border-color`.

```
.border{ border-color:rgb(182, 141, 104) }
```

If you want to add a box shadow in that color use:

Here you see how a box with a 4 pixel `rgb(182, 141, 104)` colored shadow looks like.

```
.boxshadow{ -moz-box-shadow:4px 4px 4px  
4px rgb(182, 141, 104); -webkit-box-  
shadow:4px 4px 4px 4px rgb(182, 141, 104);  
box-shadow:4px 4px 4px 4px rgb(182, 141,  
104) }
```

# Background

The CSS property to change the background color of an element to YUV 149.0410, -22.2052, 28.9050 is called "background". The background property can be set on classes, ids or directly on the HTML element.

```
.background, #background, body{  
background: rgb(182, 141, 104) }
```

If only the background color should be changed can be used:

```
.background{ background-color: rgb(182,  
141, 104) }
```

This example shows the color as background, it is applied via the CSS property "background".

To optimize and compress your CSS code, you can use our [online CSS compressor and optimizer](#) based on csstidy. If you want to create a linear or radial gradient as background or border, check our [CSS Gradient Generator](#).

Hey! You found this booklet interesting? Support Converting Colors with the new Membership Option!

The pro membership hides all ads, plus gives you double the colors in the color bucket, and more awesome pro features!

**[Learn more, Memberships starting at \\$2.50/m!](#)**

**Follow me  
on Twitter!**

@ConvertingColor