

Converting Colors

YUV(149.1010, -6.4588,
18.3284)

Have a look what the booklet for
YUV(149.1010, -6.4588, 18.3284)
contains.

YUV(149.1010, -6.4588, 18.3284)	3
<i>Conversions</i>	4
<i>Details</i>	6
<i>Harmonies</i>	12
<i>Previews</i>	24
<i>Color Blindness Simulation</i>	28
<i>CSS Examples</i>	31

Color

**YUV(149.1010, -6.4588,
18.3284)**

Conversions

Conversions Part 1

Format	Color
Hex	AA8D88
RGB	170, 141, 136
RGB Percent	67%, 55%, 53%
CMY	0.3333, 0.4471, 0.4667
CMYK	0.00, 0.17, 0.20, 0.33
HSL	9°, 17%, 60%
HSV	9°, 20%, 67%
XYZ	30.5464, 29.3734, 27.3522
YIQ	149.1010, 18.8890, 4.5930

Conversions

Conversions Part 2

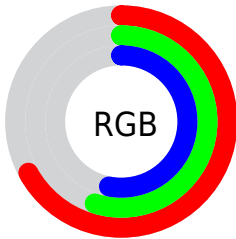
Format	Color
R_{YB}	170, 142, 136
Decimal	11177352
CIE _{Lab}	61.11, 10.12, 6.75
CIE _{LCh}	61, 12.164, 33.723
Yxy	29.3734, 0.3500, 0.3366
Android (android.graphics.Color)	4289367432 (0xFFAA8D88)
YUV	149.1010, -6.4588, 18.3284
Hunter-Lab	54.1972, 5.7602, 8.0156

Details

The YUV color **149.1010, -6.4588, 18.3284** is a dark color, and the websafe version is hex **CC9999**. A complement of this color would be **156.8990, 6.4588, -18.3284**, and the grayscale version is **149.0000, 0.0000, 0.0000**.

A 20% lighter version of the original color is **203.5850, -7.1904, 19.6580**, and **98.2040, -6.0166, 16.4841** is the 20% darker color. If you saturate the color by 10%, you get **138.3580, -9.5435, 27.7500**, and if you desaturate by 10%, it is **159.2570, -3.0847, 9.4216**.

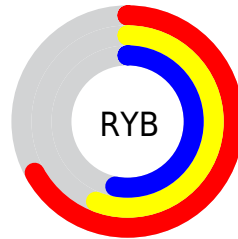
Distribution



Red (67%)

Green (55%)

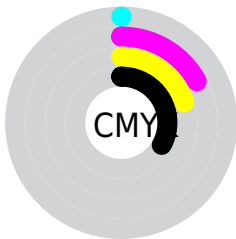
Blue (53%)



Red (67%)

Yellow (56%)

Blue (53%)

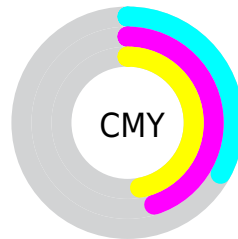


Cyan (0%)

Magenta (17%)

Yellow (20%)

Black (33%)



Cyan (33%)

Magenta (45%)

Yellow (47%)

Brightness & Saturation Gradients

These gradients show how the YUV color 149.1010, -6.4588, 18.3284 changes by changing the brightness by 10 percent. The first figure shows a shift by +10% for each color and the second figure -10%.

Similar to the brightness gradients but the following saturation gradients show a change of the YUV color 149.1010, -6.4588, 18.3284 by changing the saturation by 10% instead.

■ 149.1010, -6.4588,
18.3284

■ 149.1010, -6.4588,
18.3284

255.0000, 0.0000,
0.0000

■ 122.9160, -5.8746,
17.6137

■ 203.5850, -7.1904,
19.6580

■ 98.2040, -6.0166,
16.4841

■ 231.5850, -7.1904,
19.6580

■ 74.0190, -5.4324,
15.7693

■ 251.5120, -3.2104,
3.0590

■ 51.4210, -5.1376,
14.5398

■ 29.9370, -4.4059,
13.2103

■ 7.4750, -3.6852,
15.3694

■ 0.0000, 0.0000,

0.0000

■ 149.1010, -6.4588,
18.3284

■ 149.1010, -6.4588,
18.3284

■ 138.3580, -9.5435,
27.7500

■ 159.2570, -3.0847,
9.4216

■ 128.2020,
-12.9176, 36.6568

■ 170.0000, 0.0000,
0.0000

■ 118.0460,
-16.2917, 45.5637

■ 180.1560, 3.3741,
-8.9068

■ 107.3030,
-19.3764, 54.9853

■ 190.8990, 6.4588,
-18.3284

■ 97.1470, -22.7505,
63.8921

■ 201.0550, 9.8329,
-27.2352

■ 86.4040, -25.8352,
73.3137

■ 211.7980, 12.9176,
-36.6568

■ 76.2480, -29.2093,
82.2205

■ 221.9540, 16.2917,
-45.5637

■ 65.5050, -32.2940,
91.6421

■ 229.5850, 12.5296,
-52.2560

Harmonies

Analogous

The Analogous color harmony consists of three colors that are next to each other on the color wheel.



149.3550, -1.6540, 17.2287



149.1010, -6.4588, 18.3284



148.5690, -9.6475, 14.4100

Triad

The Triadic color harmony groups three colors that are evenly spaced from another and form a triangle on the color wheel.



149.1010, -6.4588, 18.3284



144.7120, -3.3090, -12.0254



147.4040, 10.6468, -8.2473

Complementary

The Complementary color scheme is a pair of colors which are on the opposite of each other on the color wheel.



149.1010, -6.4588, 18.3284



156.8990, 6.4588, -18.3284

Split Complementary

Split-complementary colors differ from the complementary color scheme. The scheme consists of three colors, the original color and two neighbors of the complement color.



145.2350, 10.2371, -16.8691



149.1010, -6.4588, 18.3284



143.7480, 2.0962, -19.0730

Square

The Square scheme is like the rectangle color scheme, but the four colors are evenly spaced on the color wheel.



149.1010, -6.4588, 18.3284



145.5130, -8.1409, -2.2039



143.8170, 7.4852, -20.8875



148.4870, 8.1409, 2.2039

Rectangle

The Rectangle color scheme consists of four colors that form a rectangle on the color wheel.



149.1010, -6.4588, 18.3284



147.6070, -10.6523, 9.9917



143.8170, 7.4852, -20.8875



146.4960, 11.0945, -11.8360

Sweetspot

The Sweet Spot groups the original color and five complimentary colors.



149.1010, -6.4588, 18.3284



213.4740, -2.2057, 7.4773



149.4720, 7.6553, 18.0031



107.5660, -1.7580, 3.8886



240.0000, 0.0000, 0.0000



112.0000, 0.0000, 0.0000

Same Dimension

The Same Dimension uses a secret algorithm to generate beautiful new colors.



149.1010, -6.4588, 18.3284



188.9560, -9.8383, 28.9796



159.0800, -11.3784, 9.5768



78.9790, -1.4686, 4.4034



57.1660, -28.1828, 79.6614



7.7410, -3.8163, 10.7511

Inverse Universe

The Inverse Universe completely reimagines the original color for something new.



156.8990, 6.4588, -18.3284



201.4570, 10.1277, -28.4648



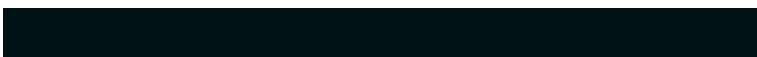
146.9200, 11.3784, -9.5768



81.0210, 1.4686, -4.4034



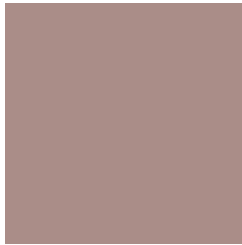
90.8340, 28.1828, -79.6614



12.2590, 3.8163, -10.7511

Previews

White Background



This preview shows how the YUV color 149.1010, -6.4588, 18.3284 looks on a white background.

Color Contrast Check

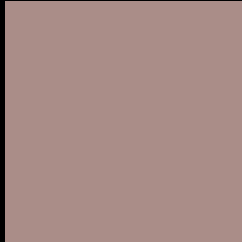
Large Text (above 18pt) WCAG AA ✓ Pass

Any Text WCAG AA × Fail

Large Text (above 18pt) WCAG AAA × Fail

Any Text WCAG AAA × Fail

Black Background



This preview shows how the YUV color 149.1010, -6.4588, 18.3284 looks on a black background.

Color Contrast Check

Large Text (above 18pt) WCAG AA ✓ Pass

Any Text WCAG AA ✓ Pass

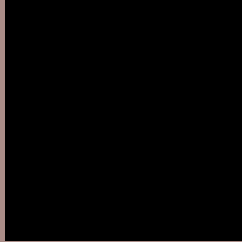
Large Text (above 18pt) WCAG AAA ✓ Pass

Any Text WCAG AAA × Fail

If you want to check with other color combinations, try the [Color Contrast Checker](#).

YUV 149.1010, -6.4588, 18.3284

Background



This preview shows how black text looks on a background with the YUV color 149.1010, -6.4588, 18.3284.



This preview shows how white text looks on a background with the YUV color 149.1010, -6.4588,

Color Blindness Simulation

Color vision deficiency is a very complex topic, and I could not describe the different causes any better than Wikipedia does, so if you want to learn more, you should check out their [article about color blindness](#).

Dichromacy



Original Color

149.1010, -6.4588, 18.3284

Protanopia

147.5830, -4.2314, 3.8737

Deuteranopia

148.4920, -6.1586, 15.3545



Tritanopia

150.1210, -0.0597, 19.1879

Trichromacy



Original Color

149.1010, -6.4588, 18.3284

Protanomaly

148.3880, -5.1213, 9.3067

Deuteranomaly

148.7910, -6.3060, 15.9693

Tritanomaly

149.8390, -2.3856, 18.5582

Monochromacy



Original Color

149.1010, -6.4588, 18.3284

Achromatopsia

149.0000, 0.0000, 0.0000

Achromatomaly

149.0610, -2.4951, 6.9625

CSS Examples

Text

The CSS property to change the color of the text to YUV 149.1010, -6.4588, 18.3284 is called "color". The color property can be set on classes, ids or directly on the HTML element.

This example shows how text in the color `rgb(170, 141, 136)` looks like.

```
.text, #text, p{  
    color:rgb(170, 141, 136)  
}
```

If you want to add a text shadow in that color use the text-shadow property, you can generate a text shadow directly with our [CSS Text Shadow Generator](#).

Here you see how black text with a 4 pixel rgb(170, 141, 136) colored shadow looks like.

```
.shadow{ text-shadow: 4px 4px 2px rgb(170, 141, 136) }
```

Border

The CSS property to change the border of an element to YUV 149.1010, -6.4588, 18.3284 is called "border". The border property can be set on classes, ids or directly on the HTML element.

This example shows the color as border, it can be applied via the CSS property "border" or "border-color".

```
.border, #border, table{ border:4px solid rgb(170, 141, 136) }
```


If only the border color should be changed use the property `border-color`.

```
.border{ border-color:rgb(170, 141, 136) }
```

If you want to add a box shadow in that color use:

Here you see how a box with a 4 pixel `rgb(170, 141, 136)` colored shadow looks like.

```
.boxshadow{ -moz-box-shadow:4px 4px 4px  
4px rgb(170, 141, 136); -webkit-box-  
shadow:4px 4px 4px 4px rgb(170, 141, 136);  
box-shadow:4px 4px 4px 4px rgb(170, 141,  
136) }
```

Background

The CSS property to change the background color of an element to YUV 149.1010, -6.4588, 18.3284 is called "background". The background property can be set on classes, ids or directly on the HTML element.

```
.background, #background, body{  
background: rgb(170, 141, 136) }
```

If only the background color should be changed can be used:

```
.background{ background-color: rgb(170,  
141, 136) }
```

This example shows the color as background, it is applied via the CSS property "background".

To optimize and compress your CSS code, you can use our [online CSS compressor and optimizer](#) based on csstidy. If you want to create a linear or radial gradient as background or border, check our [CSS Gradient Generator](#).

Hey! You found this booklet interesting? Support Converting Colors with the new Membership Option!

The pro membership hides all ads, plus gives you double the colors in the color bucket, and more awesome pro features!

[Learn more, Memberships starting at \\$2.50/m!](#)

**Follow me
on Twitter!**

@ConvertingColor